



Bemidji State University

Northwest Technical College

Its picturesque location along Lake Bemidji and in the north woods have inspired Bemidji State University (BSU) to take an innovative approach to educating students for more than a century. Bemidji State offers programs in Indigenous sustainability and environmental studies that take full advantage of the area's natural resources while providing experiential learning and fieldwork opportunities. Bemidji State University prides itself on remaining a regional, residential university that has modified learning experiences to accommodate shifting student trends. Northwest Technical College (NTC) is one of three pure technical colleges in the state. NTC provides hands-on experiential learning to support the application of knowledge and development of skills. By providing an accessible and affordable education, NTC helps to fuel the workforce and surrounding community.

Bemidji State University and Northwest Technical College are standalone institutions with a shared administration and resources. NTC students have access to library, residential, and athletic opportunities at Bemidji State. The university offers 60 undergraduate programs, 14 pre-professional programs, and nine master's degree programs. Recently renovated buildings offer smaller, more modern classrooms. At NTC, students can choose from 20 programs with five career paths. The college's innovative partnerships with various business and industries help prepare students for well-paying jobs.

Contributing to the Minnesota Economy

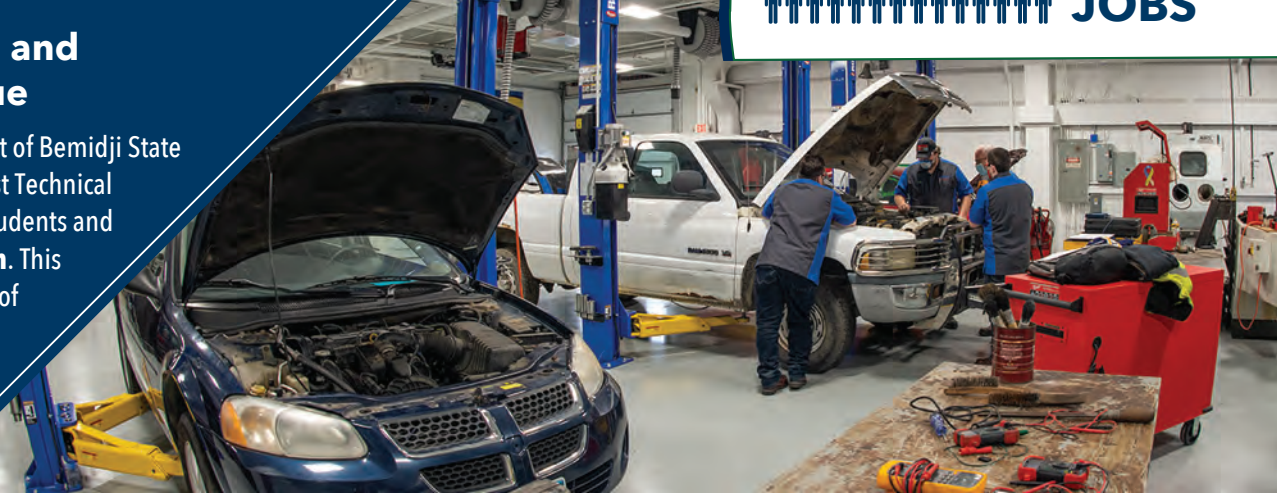
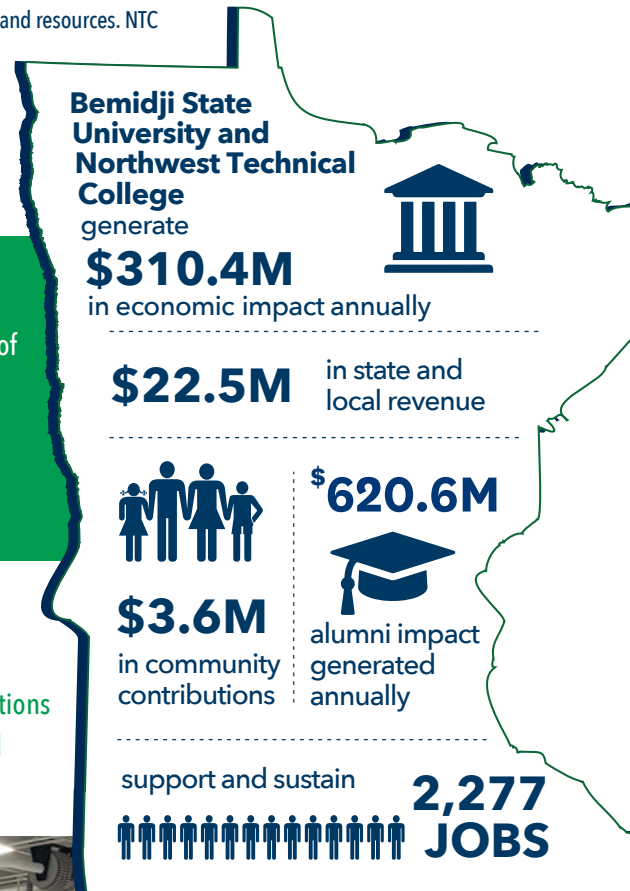
- Bemidji State University and Northwest Technical College generate an annual impact of **\$310.4 million**. This includes a direct impact of \$169.7 million and an indirect/induced impact of \$140.8 million.
- Spending on operations and capital projects generates \$153.6 million of the total impact, and student and visitor spending generates \$284 million.

Supporting and Sustaining Jobs in the State

- Bemidji State University and Northwest Technical College support and sustain **2,277 Minnesota jobs** (1,546 direct and 731 indirect/induced). These jobs are at both institutions and in the community – 633 direct jobs are employees of Bemidji State University and Northwest Technical College.

Generating Local and State Tax Revenue

- The combined tax impact of Bemidji State University and Northwest Technical College, its suppliers, students and visitors is **\$22.5 million**. This includes a direct impact of \$14 million and indirect/induced impact of \$8.6 million.



Alumni in the State Generate Additional Impact

An estimated 31,872 Bemidji State University and Northwest Technical College alumni living and working in Minnesota are continuing to make a positive economic impact after graduation. These graduates are an integral part of the Minnesota workforce, impacting the economy not only through their spending but also through the extra earning power generated by their Bemidji State University and Northwest Technical College degrees.

Each year, Bemidji State University and Northwest Technical College alumni generate \$620.6 million in economic impact for Minnesota and support and sustain 3,359 jobs. Over their 40-year careers, Bemidji State University and Northwest Technical College alumni will generate \$24.8 billion in the economy. These impacts are based on the added value of earning a degree from Bemidji State University and Northwest Technical College, not alumni full wages. This impact is based upon the total number of alumni in Minnesota 10 years after graduation.

Making a Difference in the Community and State

Bemidji State University has actively supported work to create more economic opportunity within the region, and it touches every sector, including tourism, job creation, health care, and transportation. This occurs through board membership, shared expertise, and advocacy. From an annual trash cleanup to studying Indigenous species, Bemidji State students, alumni, and faculty are active community members. The Bemidji State University campus is home to thousands of conferences, workshops, lectures, performances, competitions, and other community events.



Northwest Technical College has been participating in the Give Kids a Smile program for more than 15 years. As part of the event, NTC dental assisting students work with area dentists to provide free screenings to local children. Between 50 and 60 children are usually seen during the event, which translates to more than \$4,000 worth of free dental care provided by NTC students.

It would be difficult to overstate the commitment of Bemidji State University and Northwest Technical College to maintaining and expanding their connections with and contributions to their region, state, and the wider world, both to increase students' learning opportunities and foster positive social, economic, and environmental change.



Bemidji State University and Northwest Technical College Student Profile



6,613

students enrolled in fy2022



1,409

graduates each year



31.3%

pell recipients



13.3%

first-generation students attending college



1:16

16 students per full time faculty member



247

students currently enrolled are veterans

An estimated **\$3,620,156** in charitable donations and volunteer services are generated annually by faculty, staff, and students.

- **\$587,417** donated to local charitable organizations by faculty, staff, and students.
- **\$3,032,738** of volunteer time by faculty, staff, and students.



BEMIDJI
STATE UNIVERSITY



Northwest Technical College



MINNESOTA STATE

prepared by *Parker Phillips*
ANALYSIS & ASSESSMENT
January 2023