



# Century College

For more than fifty years, Century College has prepared students to work in high-demand careers or further their academic studies at top-ranked universities. As the state's largest comprehensive and technical college, Century College is committed to helping students succeed in a changing world. Programs offered in emerging fields are taught by faculty practitioners who share industry knowledge with students. Century College offers one of the state's lowest tuition rates as well as online, asynchronous, and face-to-face instruction options.

## Contributing to the Minnesota Economy

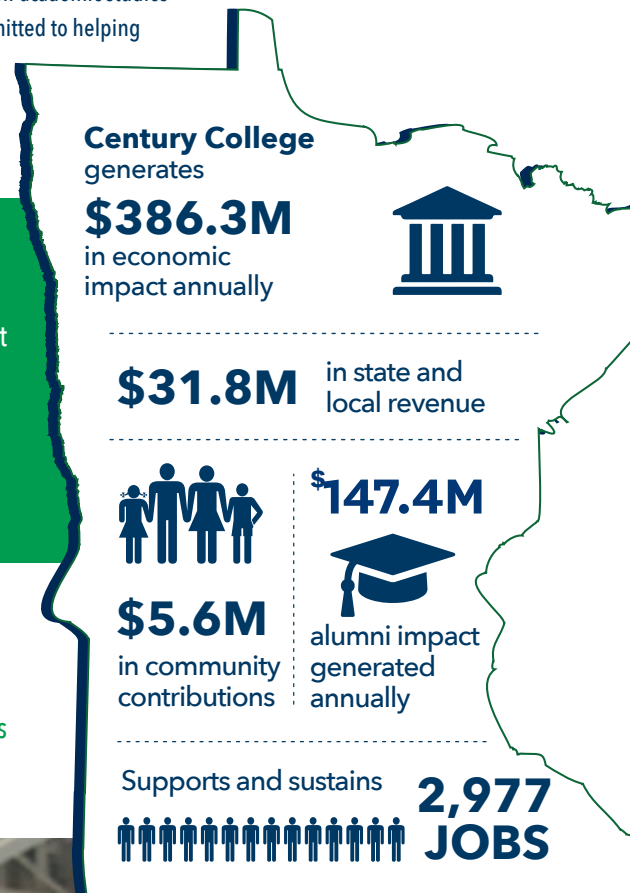
- Century College generates an annual impact of **\$386.3 million**. This includes a direct impact of \$222.9 million and an indirect/induced impact of \$163.4 million.
- Spending on operations and capital projects generates \$140.6 million of the total impact, and student and visitor spending generates \$245.7 million.

## Supporting and Sustaining Jobs in the State

- Century College supports and sustains 2,977 Minnesota jobs (2,133 direct and 844 indirect/induced). These jobs are at the college and in the community - 578 direct jobs are employees of Century College.

## Generating Local and State Tax Revenue

- The combined tax impact of Century College, its suppliers, students and visitors is **\$31.8 million**. This includes a direct impact of \$21.9 million and indirect/induced impact of \$10 million.



## Alumni in the State Generate Additional Impact

An estimated 39,968 Century College alumni living and working in Minnesota are continuing to make a positive economic impact after graduation. These graduates are an integral part of the Minnesota workforce, impacting the economy not only through their spending but also through the extra earning power generated by their Century College degree.

Each year, Century College alumni generate \$147.4 million in economic impact for Minnesota and support and sustain 786 jobs. Over their 40-year career, Century College alumni will generate \$5.9 billion in the economy. These impacts are based on the added value of earning a degree from Century College, not alumni full wages. This impact is based upon the total number of alumni in Minnesota 10 years after graduation.

## Making a Difference in the Community and State

The state-of-the-art Advanced Technology Center at Century College is helping Minnesota keep pace with advancements in engineering and STEM fields by creating programs that account for developments in medical and advanced manufacturing industries. This innovative approach to investing in the 21st Century workforce will help Minnesota address workforce shortages in high-demand fields.



Century College is committed to closing the Minnesota skills gap in the field of healthcare. Their associate degree nursing program delivers consistent quality and contributes to the health care shortage annually. The Century College medical assistant program is #1 among associate degree medical assistant programs in the nation, as determined by [topmedicalassistantprograms.org](http://topmedicalassistantprograms.org).

Continuing education is also working with a number of community-based organizations in workforce centers to help unemployed or underemployed individuals prepare for a variety of careers and reduce reliance on public assistance. Some community-based organizations that Century College is working with include Community Action Partnership and the Karen Organization of Minnesota, which provides employment, resettlement, and social services to Karen and Burmese refugees from Myanmar. The Century College orthotics and prosthetics program, which is one of only 13 in the country, seeks to address the need for prosthetics and orthotics in the community. There is a significant need for orthotics and prosthetics professionals in the healthcare industry, with an estimated 28 million at risk for amputation in the United States. To meet the demand for patients in need of orthotics and prosthetics, the supply of professionals in the industry needs to increase 60 percent by 2025.



## Century College Student Profile



**10,991**

students enrolled in fy2022



**1,784**

graduates each year



**38.7%**

pell recipients



**21.4%**

first-generation students attending college



**1:23**

23 students per full time faculty member



**458**

students currently enrolled are veterans

An estimated **\$5,564,404** in charitable donations and volunteer services are generated annually by faculty, staff, and students.

- **\$720,862** donated to local charitable organizations by faculty, staff, and students.
- **\$4,843,542** of volunteer time by faculty, staff, and students.

CENTURY  
COLLEGE



A member of Minnesota State



MINNESOTA STATE

prepared by Parker Phillips

ACCESS THE FULL REPORT [MINNSTATE.EDU/IMPACT](http://MINNSTATE.EDU/IMPACT)