



# St. Cloud State University

For more than 150 years, St. Cloud State University (SCSU) has challenged bold thinkers to consider new ways to innovate. With a main campus in St. Cloud and additional campuses in Plymouth, Minnesota, and Alnwick Castle in England, the University offers an active campus community that is welcoming of diverse individuals and ideas. SCSU is consistently ranked among the best schools and universities by U.S. News and World Report and is recognized by the Carnegie Community Engagement Classification, Colleges of Distinction, and Phi Beta Kappa for its academic excellence. SCSU Athletics is the home of highly competitive NCAA Division I and II men's and women's teams.

## Contributing to the Minnesota Economy

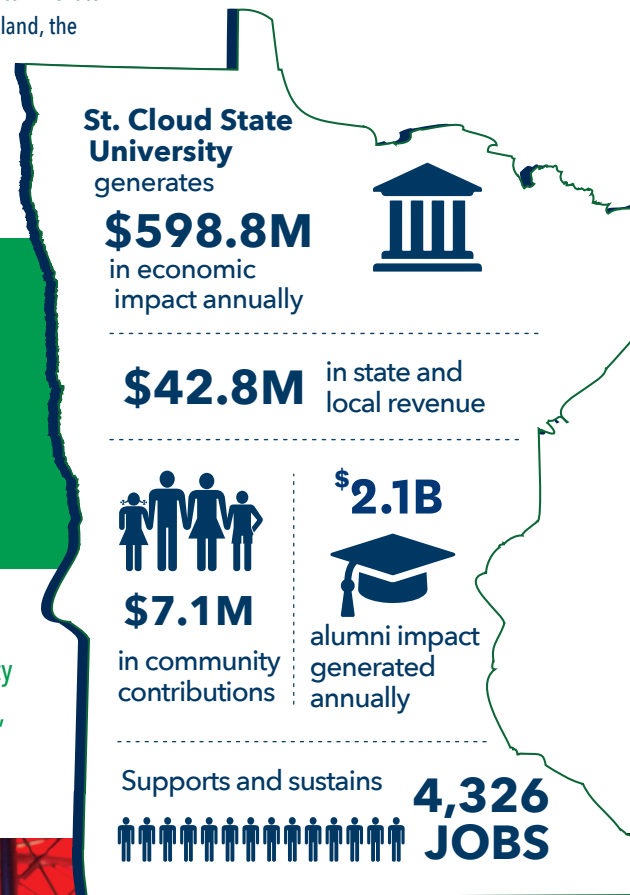
- St. Cloud State University generates an annual economic impact of **\$598.8 million**. This includes a direct impact of \$322.6 million and an indirect/induced impact of \$276.2 million.
- Spending on operations and capital projects generates \$336.5 million of the total impact, and student and visitor spending generates \$262.3 million.

## Supporting and Sustaining Jobs in the State

- SCSU supports and sustains 4,326 jobs including direct employment by the University and indirect and induced jobs created by supply and equipment vendors, contractors, and laborers for the construction and renovation of facilities, as well as hospitality services and retail in support of employees, students, and visitors.

## Generating Local and State Tax Revenue

- The combined tax impact of St. Cloud State University, its suppliers, students and visitors is **\$42.8 million**. This includes a direct impact of \$26 million and indirect/induced impact of \$16.8 million.





## Alumni in the State Generate Additional Impact

Of the more than 125,000 of alumni worldwide, 93,592 of SCSU alumni are living and working in Minnesota and continue to make a positive economic impact on the state. These graduates are an integral part of the Minnesota workforce, impacting the economy not only through their spending but also through the extra earning power generated by their St. Cloud State University degree.

Each year, St. Cloud State University alumni generate \$2.1 billion in economic impact for Minnesota and support and sustain 11,402 jobs. Over their 40-year career, SCSU alumni will generate \$84.2 billion in the economy. These impacts are based on the added value of earning a degree from SCSU, not alumni full wages. This impact is based upon the total number of alumni in Minnesota 10 years after graduation.

## Making a Difference in the Community and State

SCSU is an active member of established community groups such as the Greater St. Cloud Development Corporation, the Rotary Club of St. Cloud, and the St. Cloud Area Chamber of Commerce.



SCSU hosts the Lemonade Concert and Art Fair, an annual tradition and community event held on campus in celebration of the arts and as part of the City of St. Cloud's Granite City Days festivities.

The Minnesota Institute of Technology (TMIT) at SCSU brings together a broad range of disciplines in state-of-the-art facilities to solve industry problems.

SCSU's Minnesota Highway Safety & Research Center provides educational activities to prevent financial and human loss and promote the safe and efficient operation of the state's highway transportation system.

SCSU's nursing program is collaborating with the University of Minnesota and CentraCare Health to improve access to healthcare services in Central Minnesota while focusing on underserved communities and meeting the state's workforce needs.

SCSU is expanding its reach to adult online learners with accelerated, online graduate programs in education and business.



## St. Cloud State University Student Profile



**10,093**

students enrolled in fy2022



**2,334**

graduates each year



**33.6%**

Pell eligible



**39.2%**

first-generation students attending university



**1:16**

16 students per full time faculty member



**314**

students currently enrolled are veterans

An estimated **\$7,114,534** in charitable donations and volunteer services are generated annually by faculty, staff, and students.

- **\$1,120,777** donated to local charitable organizations by faculty, staff, and students.
- **\$5,993,757** of volunteer time by faculty, staff, and students.



ST. CLOUD STATE  
UNIVERSITY



MINNESOTA STATE

prepared by *Parker Philips*  
assess. analyze. assist!  
January 2023