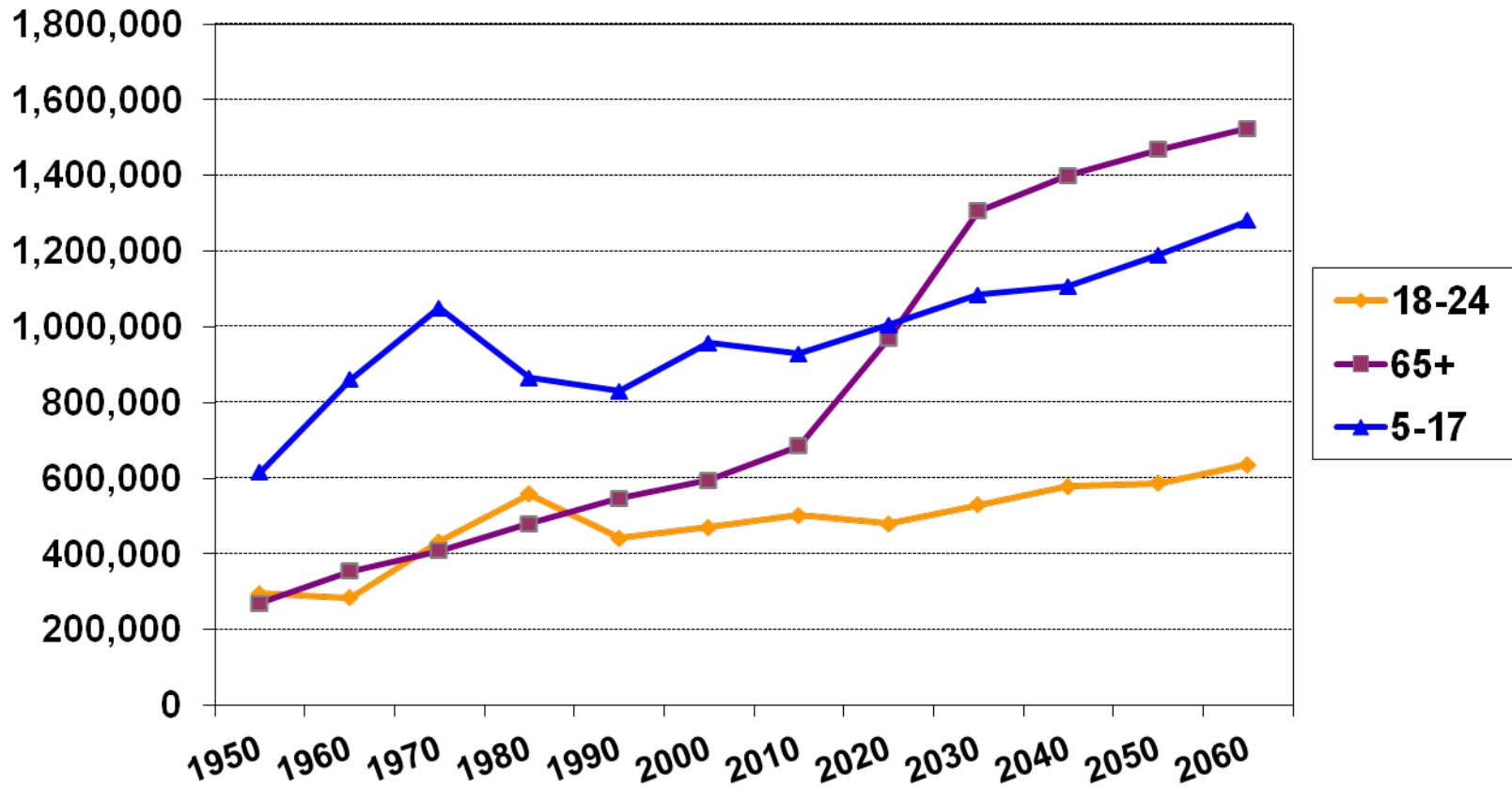


# **Minnesota Demographic Trends And MnSCU**

**Tom Gillaspay**  
**November 2015**

# Budget Pressures Will Change More 65+ Than School Age by 2020

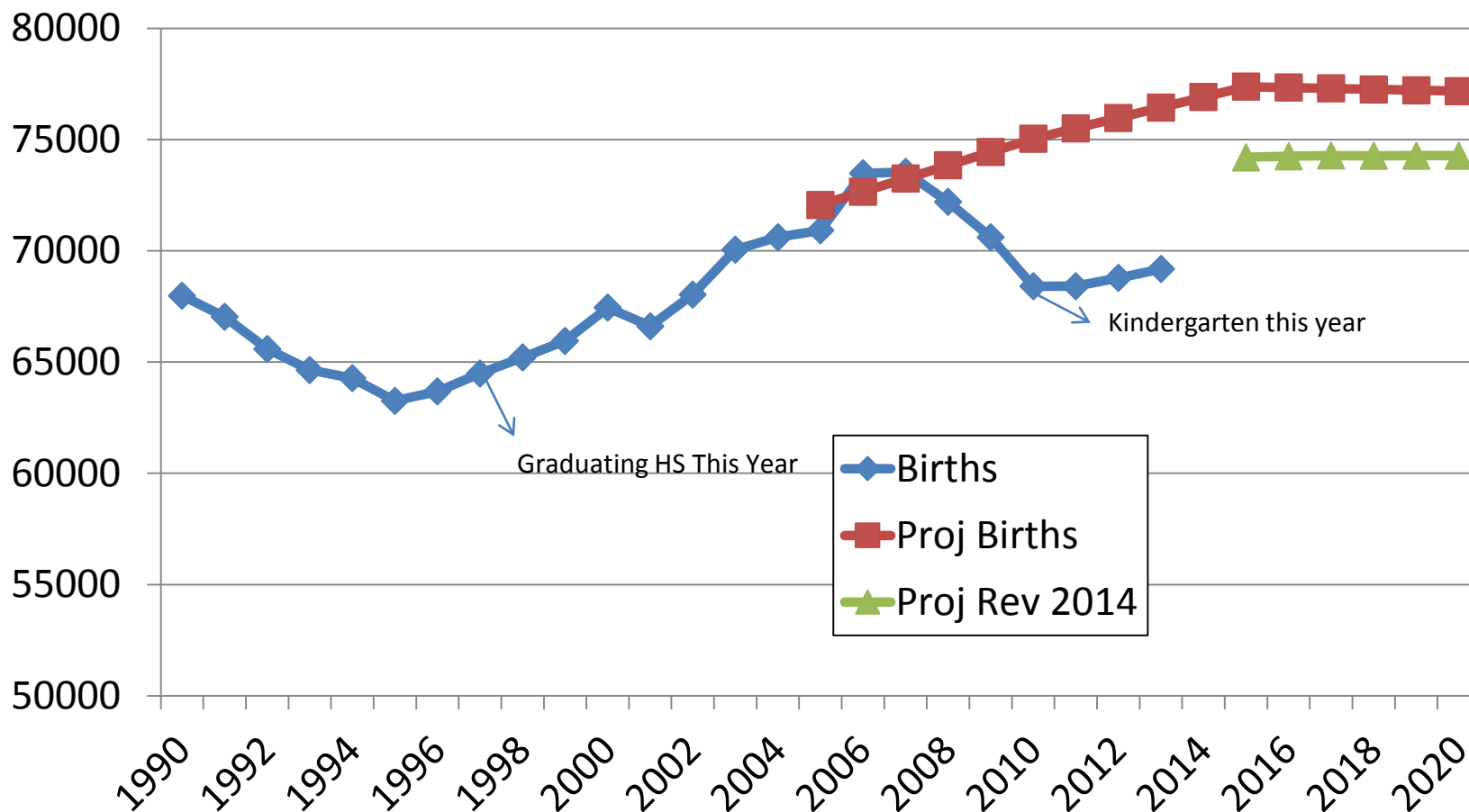


Census counts & State Demographer projection, revised Jan 2012

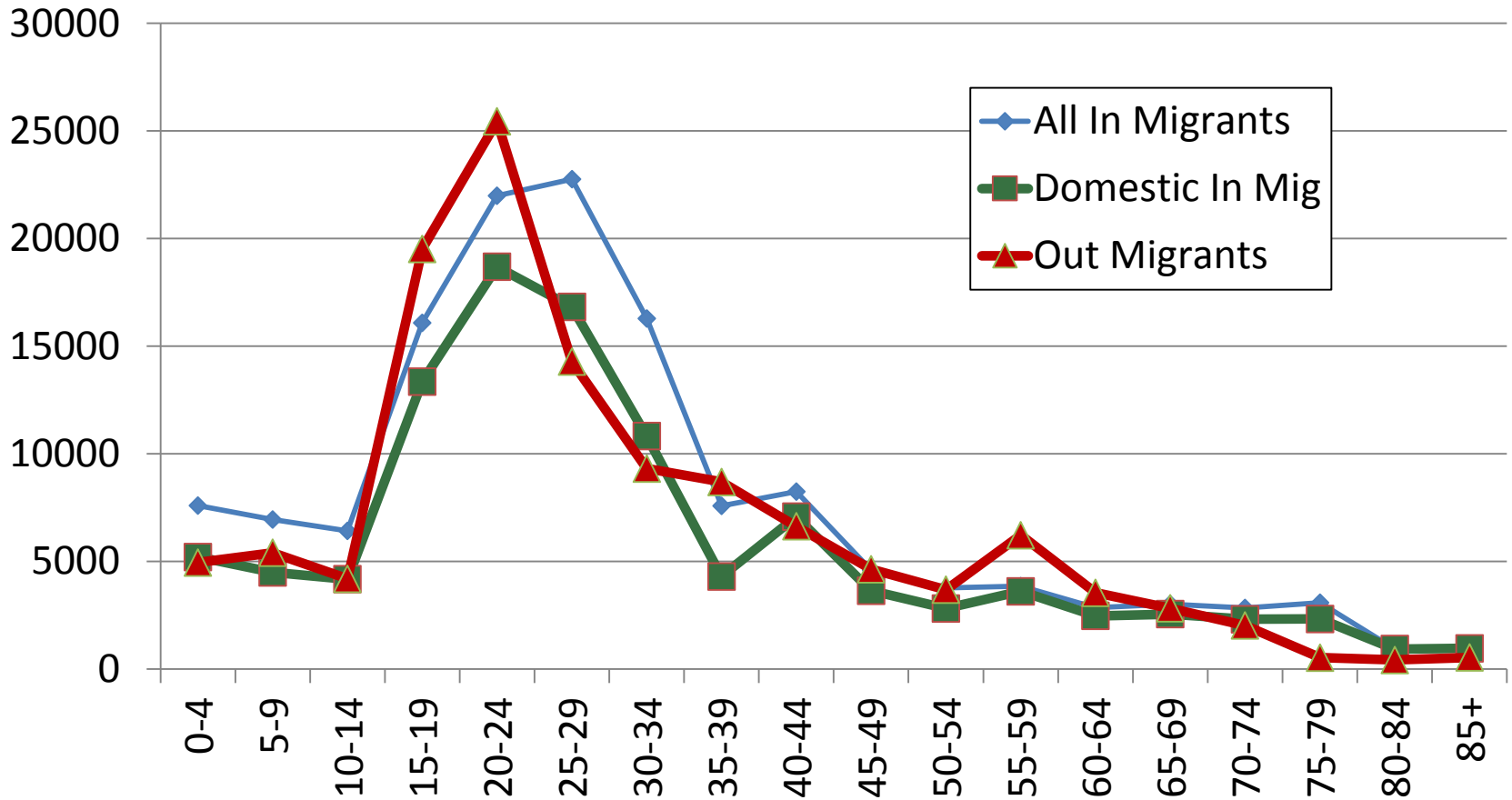
tom.gillaspy@comcast.net

# Minnesota Births

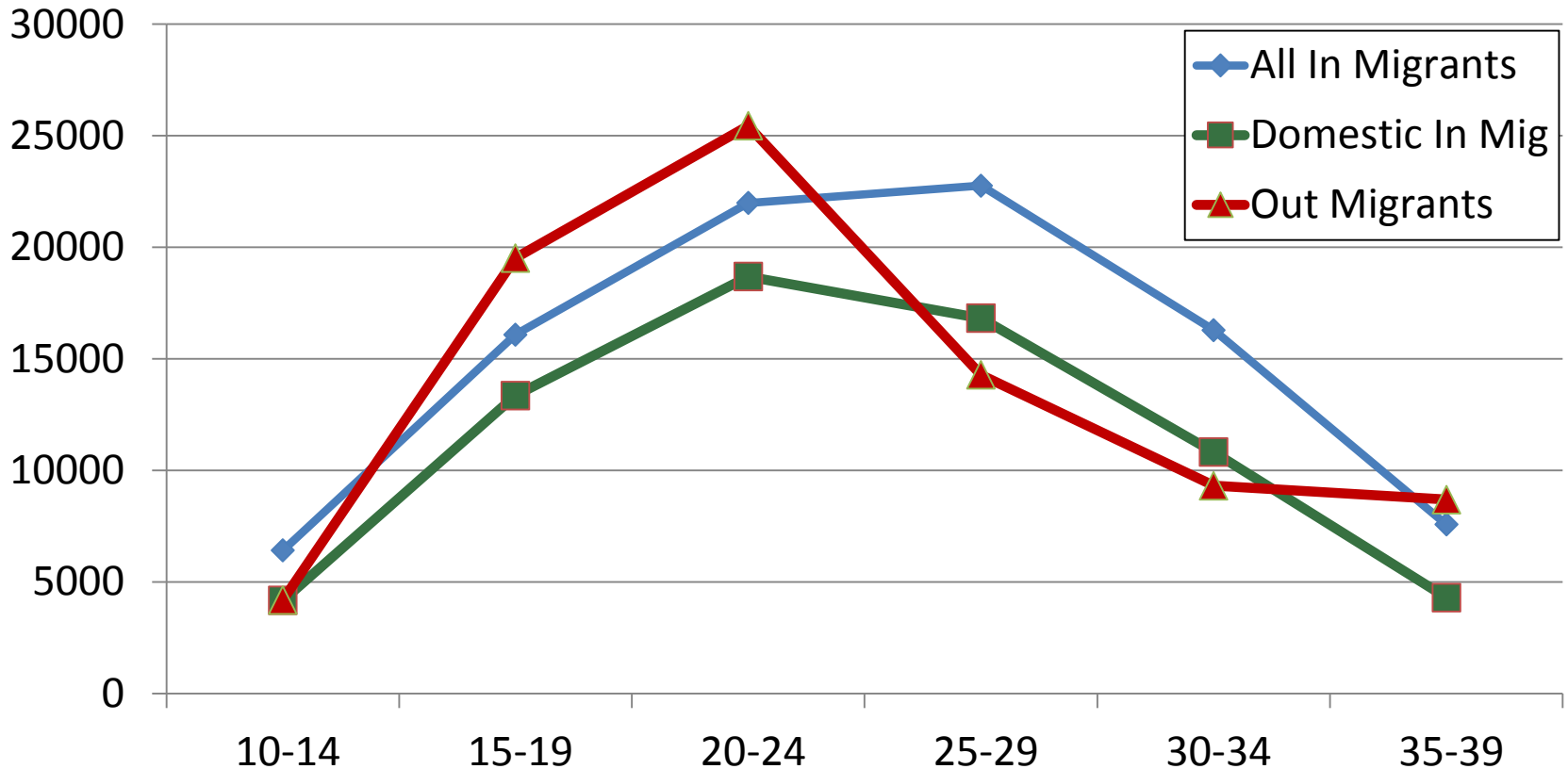
## In 2010, 8.9% Fewer Than Projected



# Minnesota Migration Profile 2013

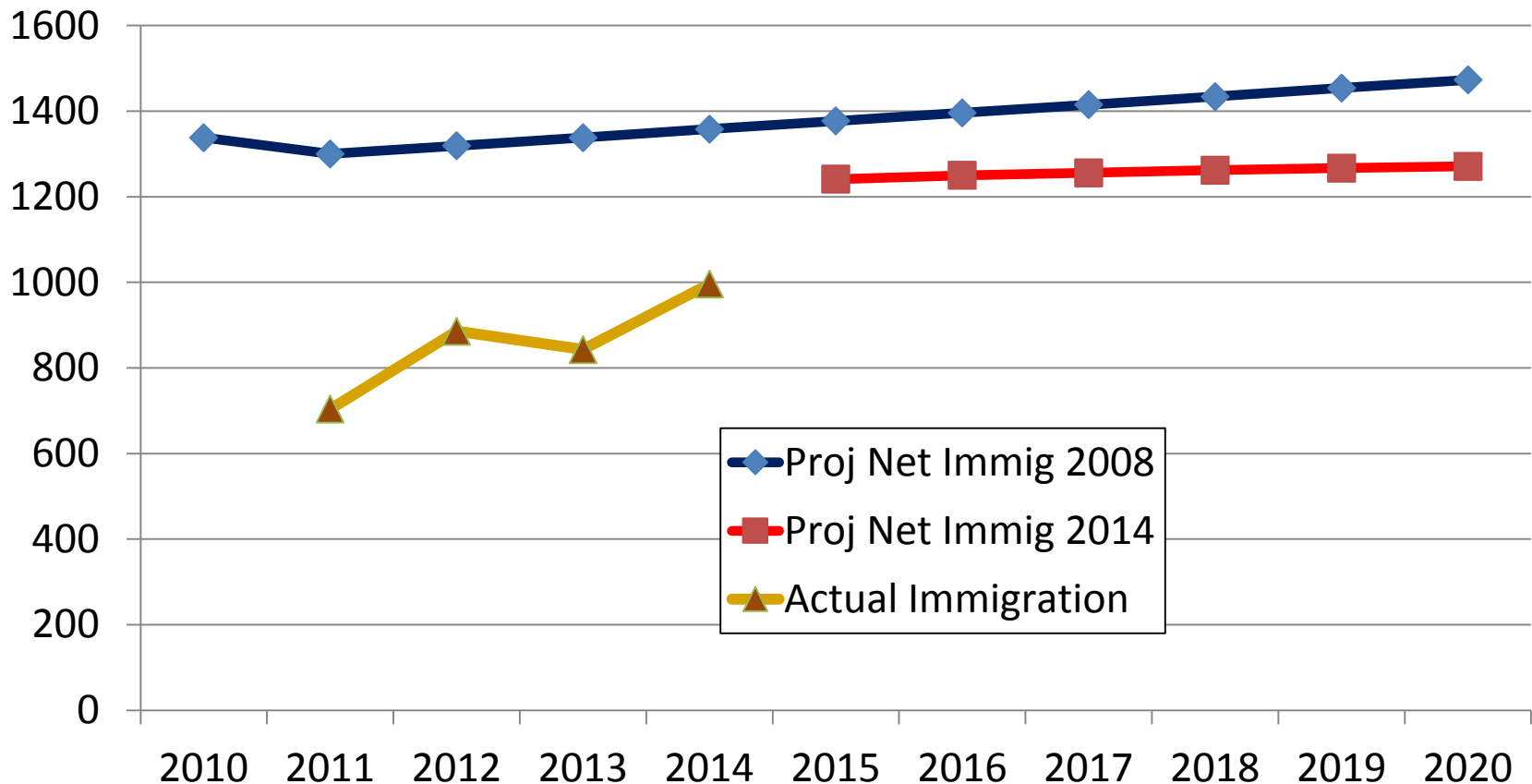


# Minnesota Migration Profile 2013



# US Immigration Is Currently Running About 27% Below Projections Released In 2010

## New Projections Anticipate This Is A Long Run Trend



Census Bureau projections and estimates

# Index of Minnesota Population For Three Age Groups

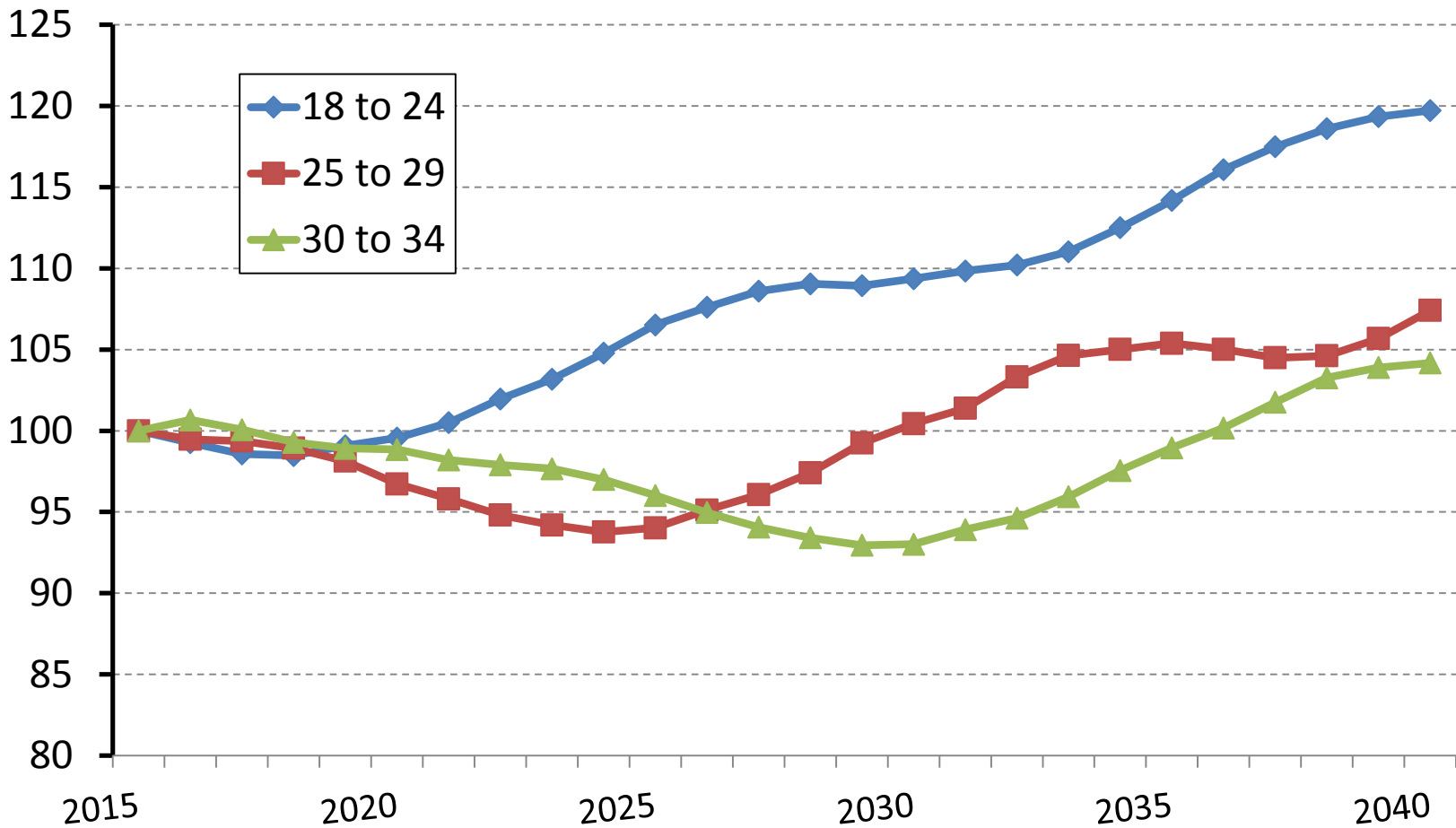
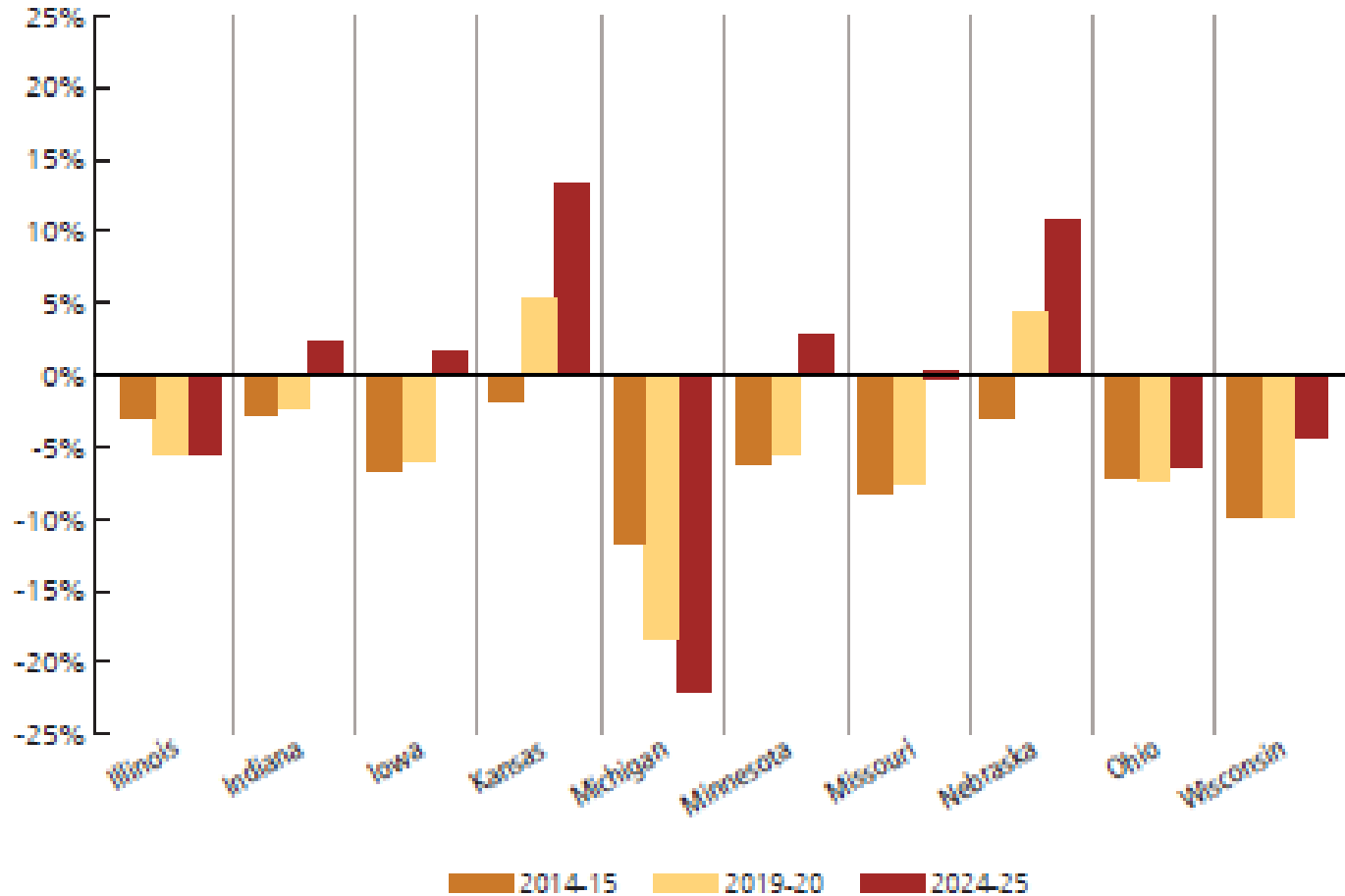


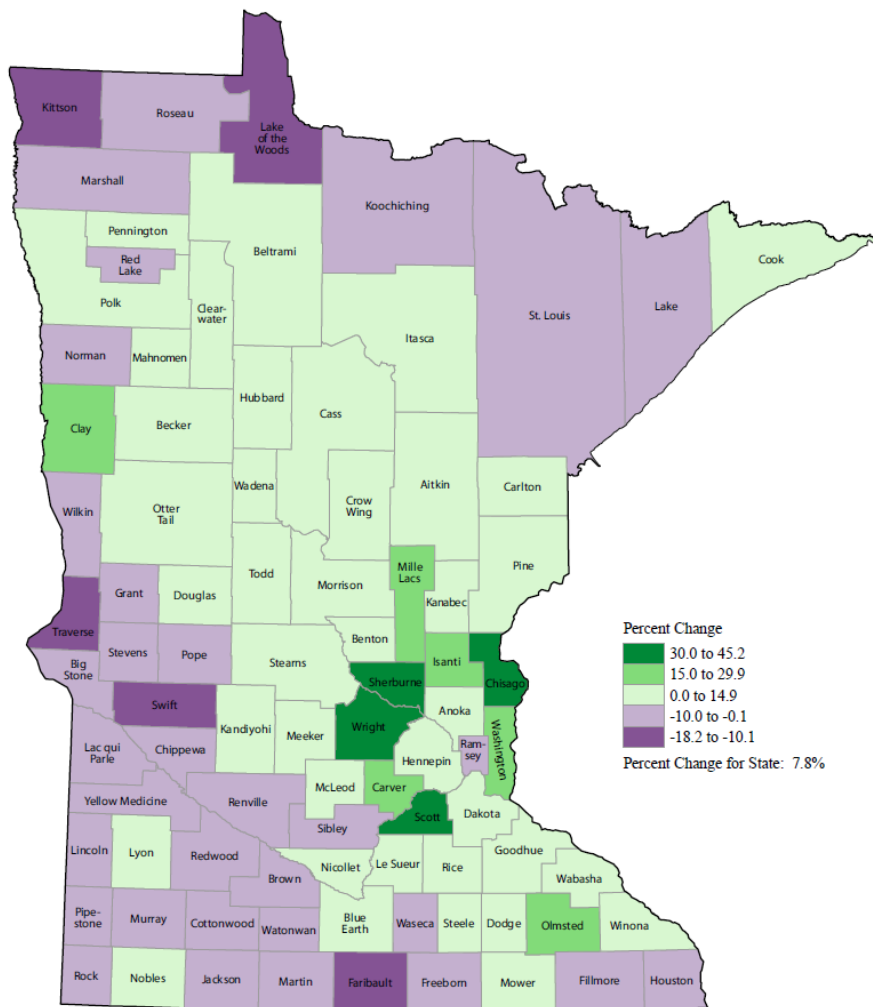
Figure 2.13. Percentage Change (Relative to 2008-09) in the Total Number of Projected High School Graduates in Midwestern States





# MINNESOTA - 2010 Census Results

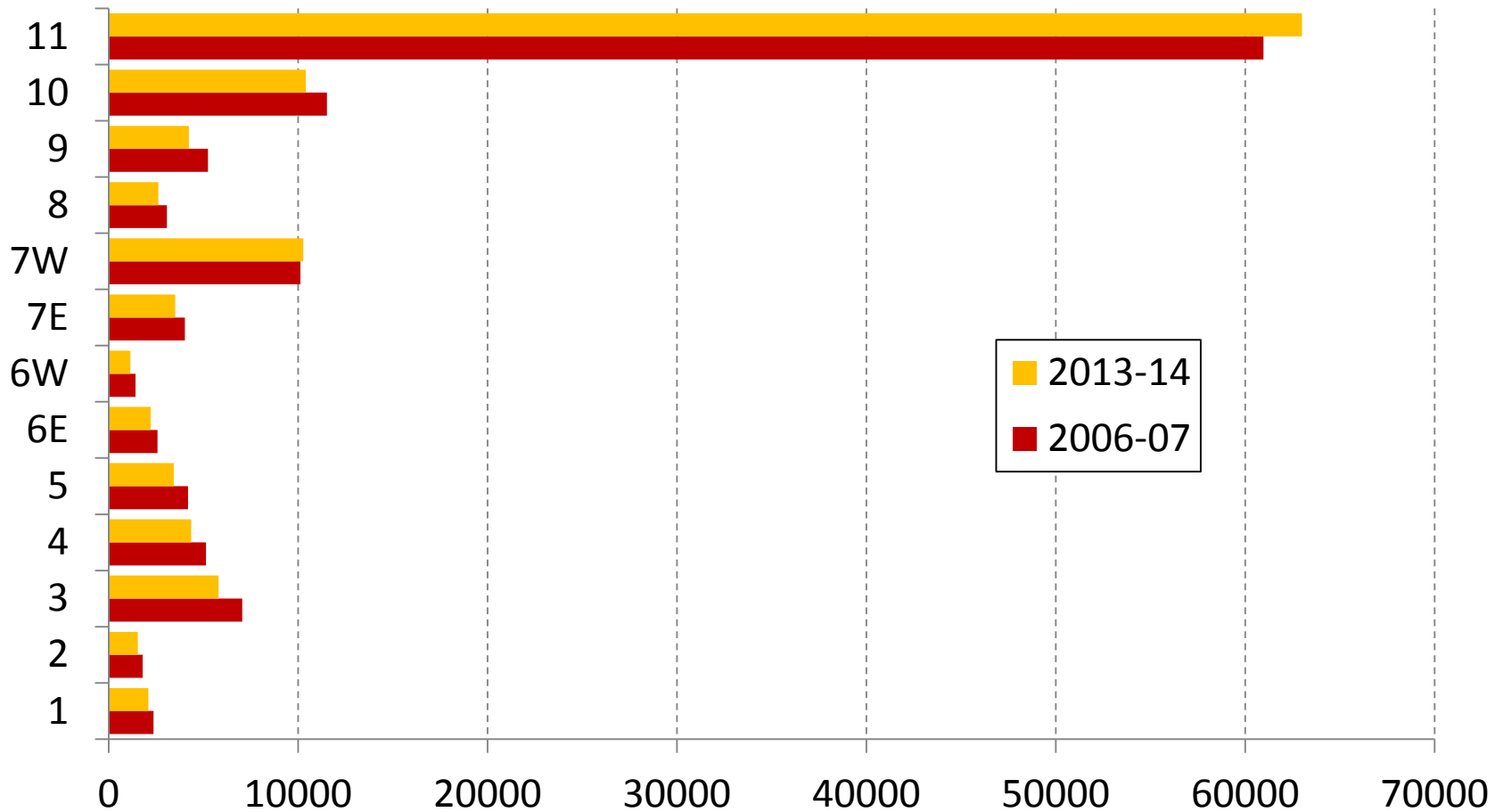
## Percent Change in Population by County: 2000 to 2010



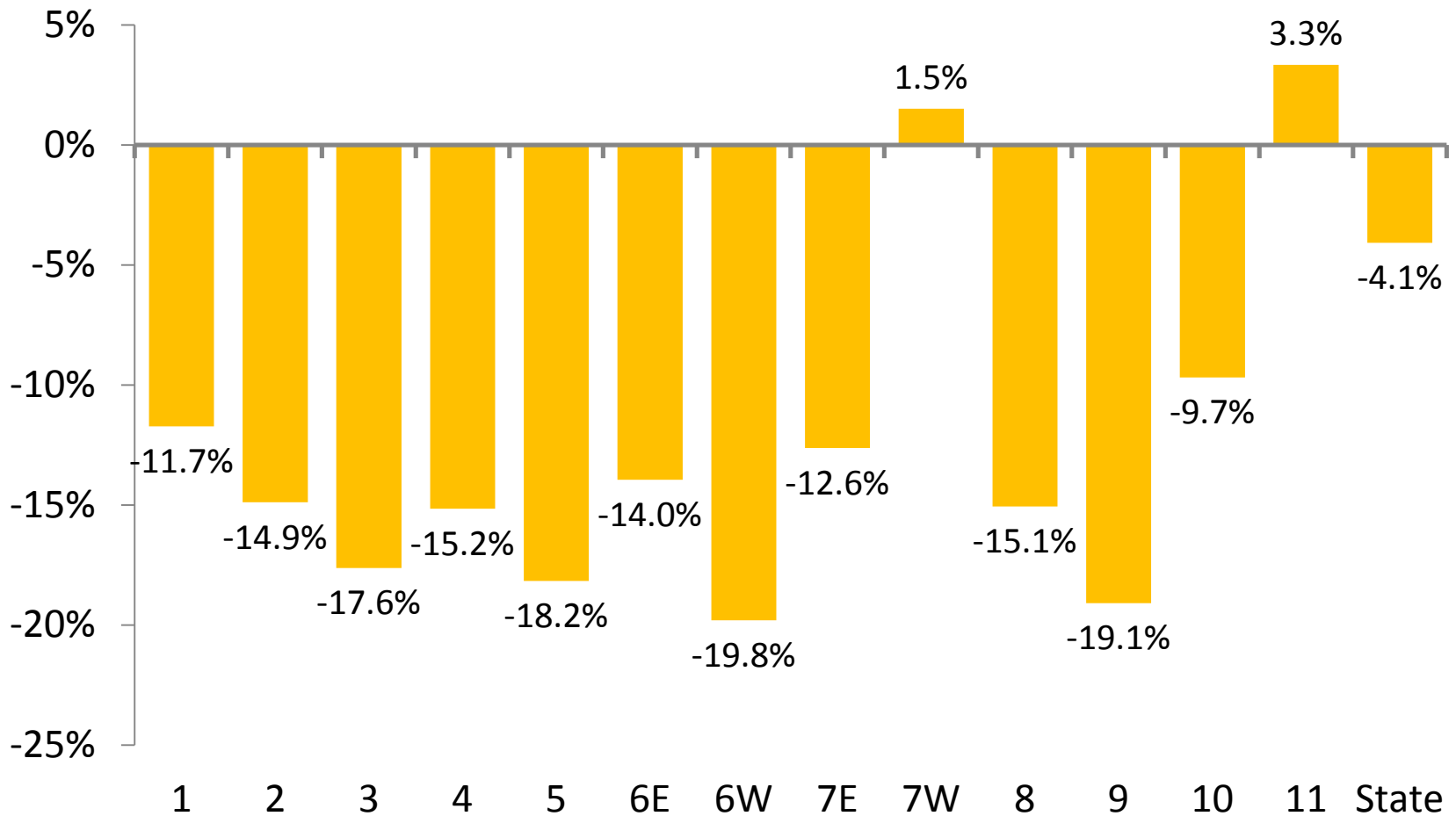
Source: U.S. Census Bureau, Census 2000 and 2010 Census Redistricting Data Summary File  
For more information visit [www.census.gov](http://www.census.gov)



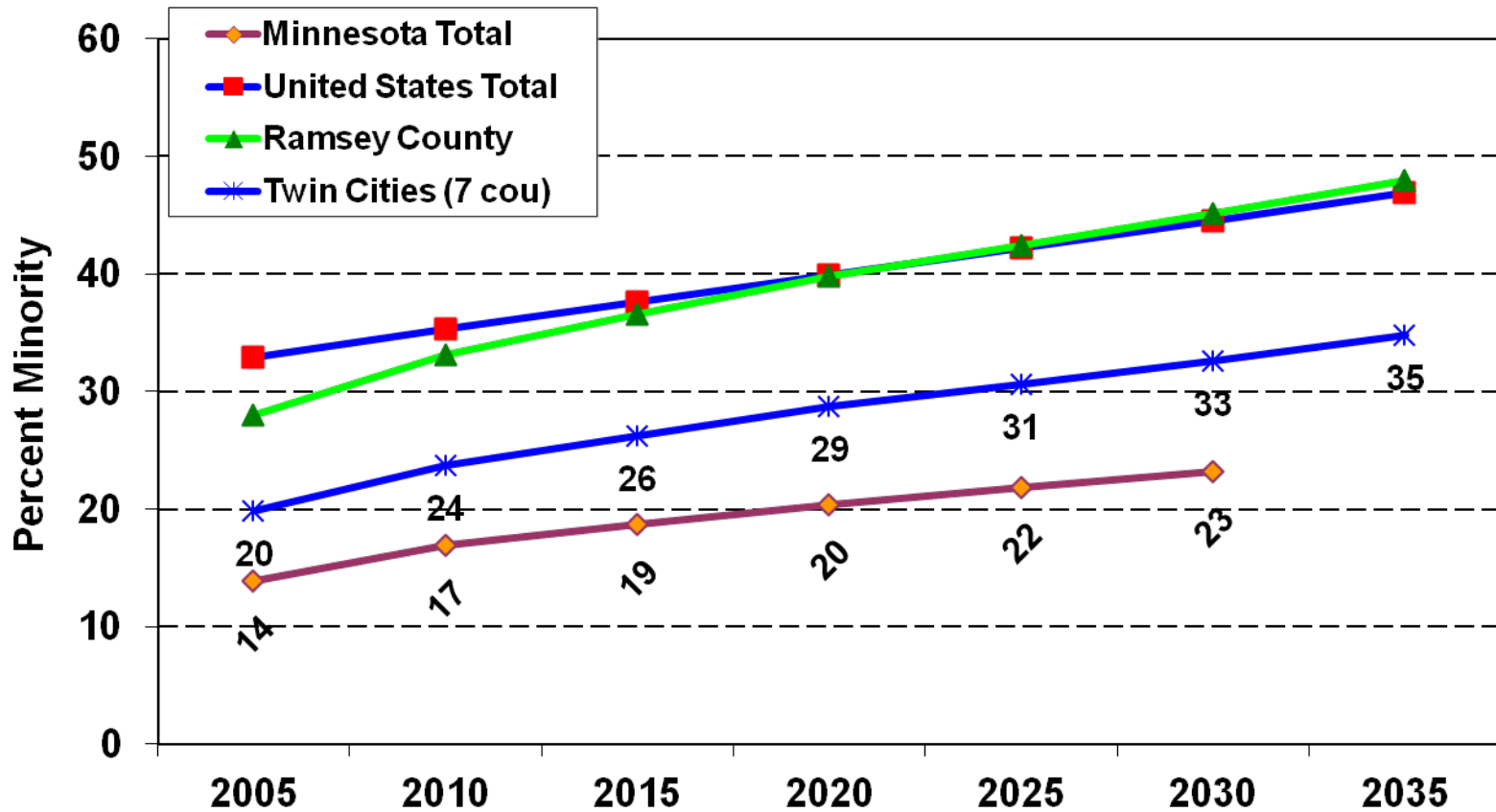
# High School Graduates By Economic Development Region



# Percent Change High School Graduates 2007 to 2014 By Economic Development Region



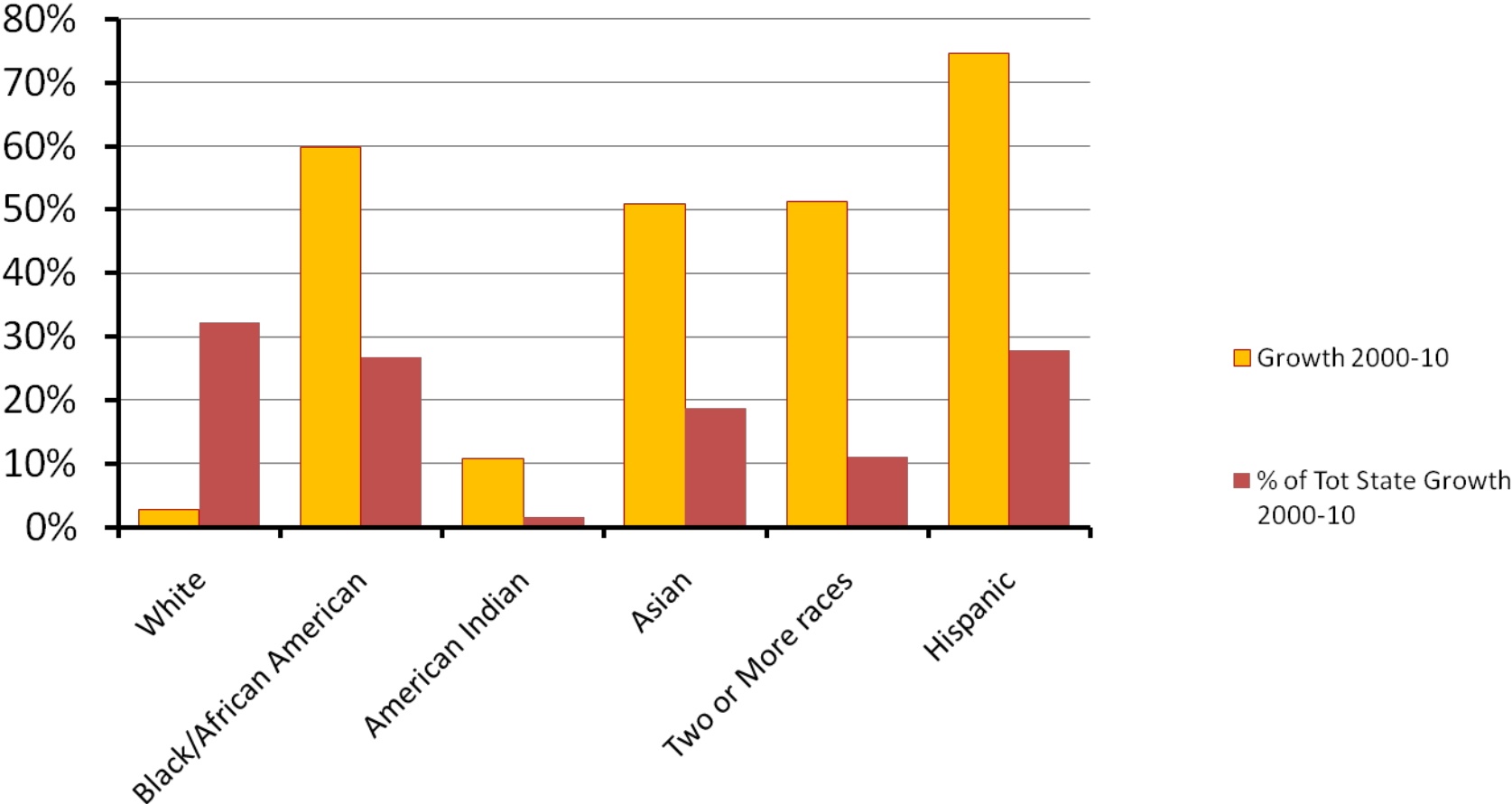
# Minnesota Will Grow More Diverse; Remain Less Diverse Than The Nation



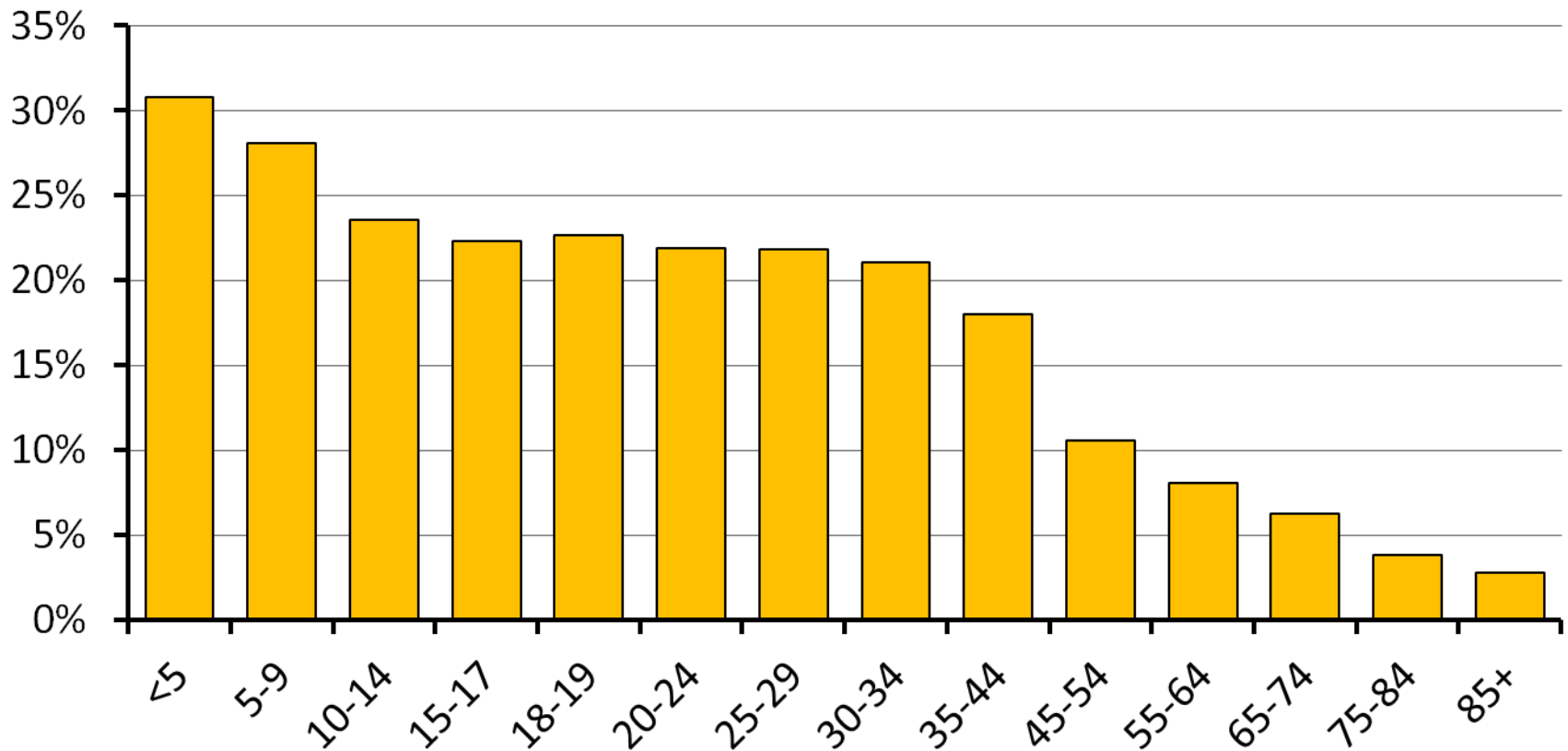
State Demographer, 2010 Census & Census Bureau projections

tom.gillaspy@comcast.net

# Minnesota—Growth & Percent of State Growth 2000-10



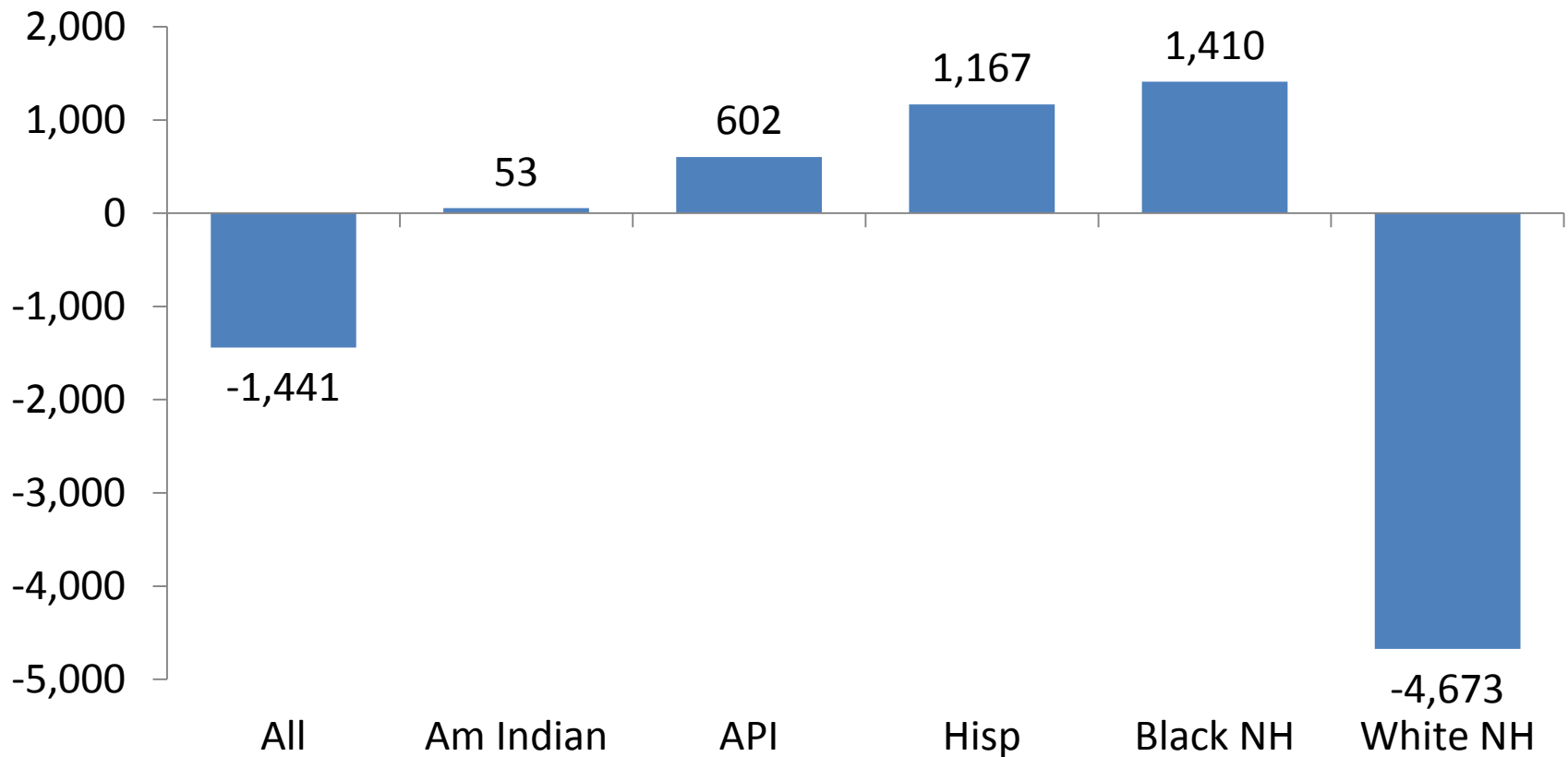
# Percent Minority 2010 Is Highest At Younger Ages



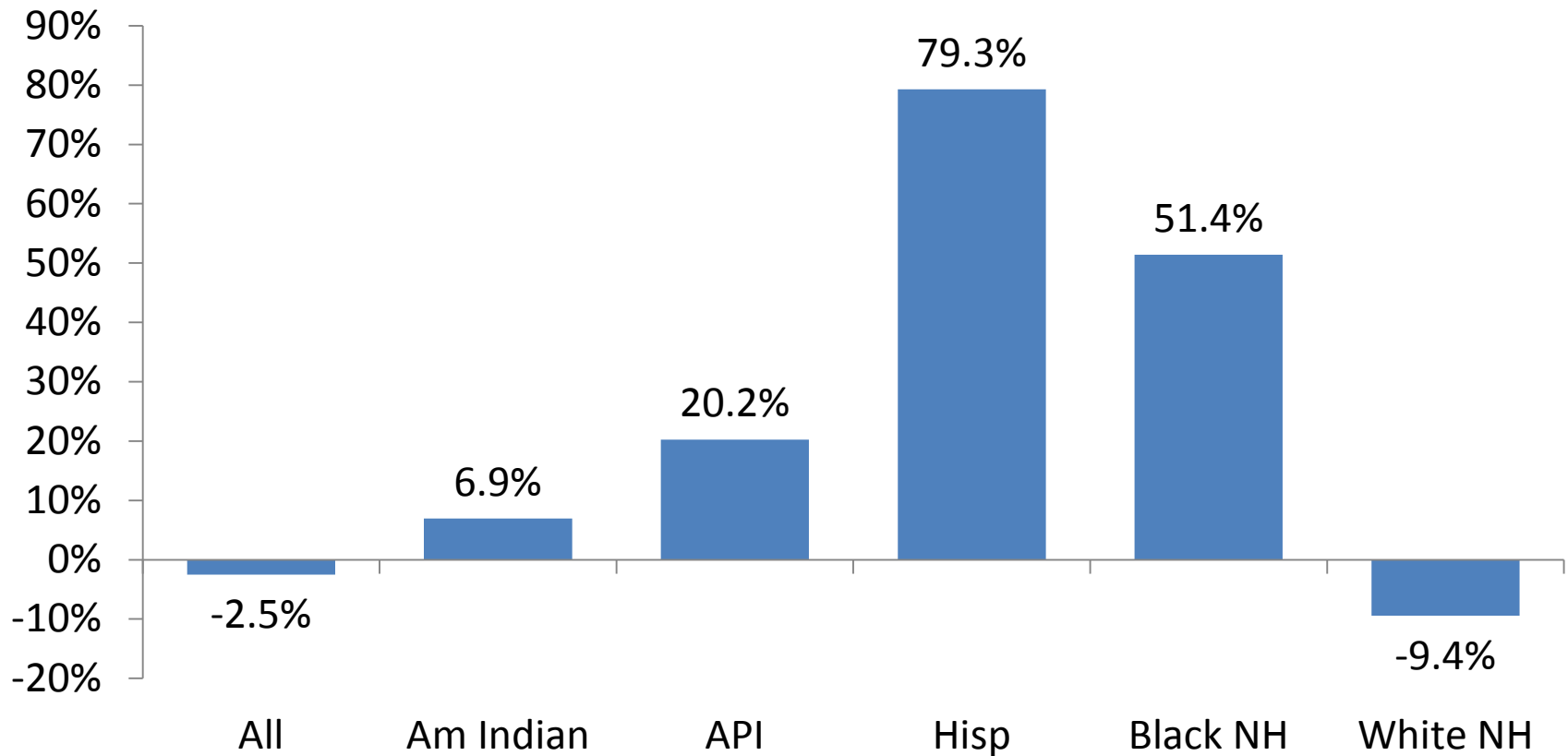
2010 Census

tom.gillaspy@comcast.net

# Change In Minnesota High School Graduates (5 Year) For School Years Ending In 2007 and 2014

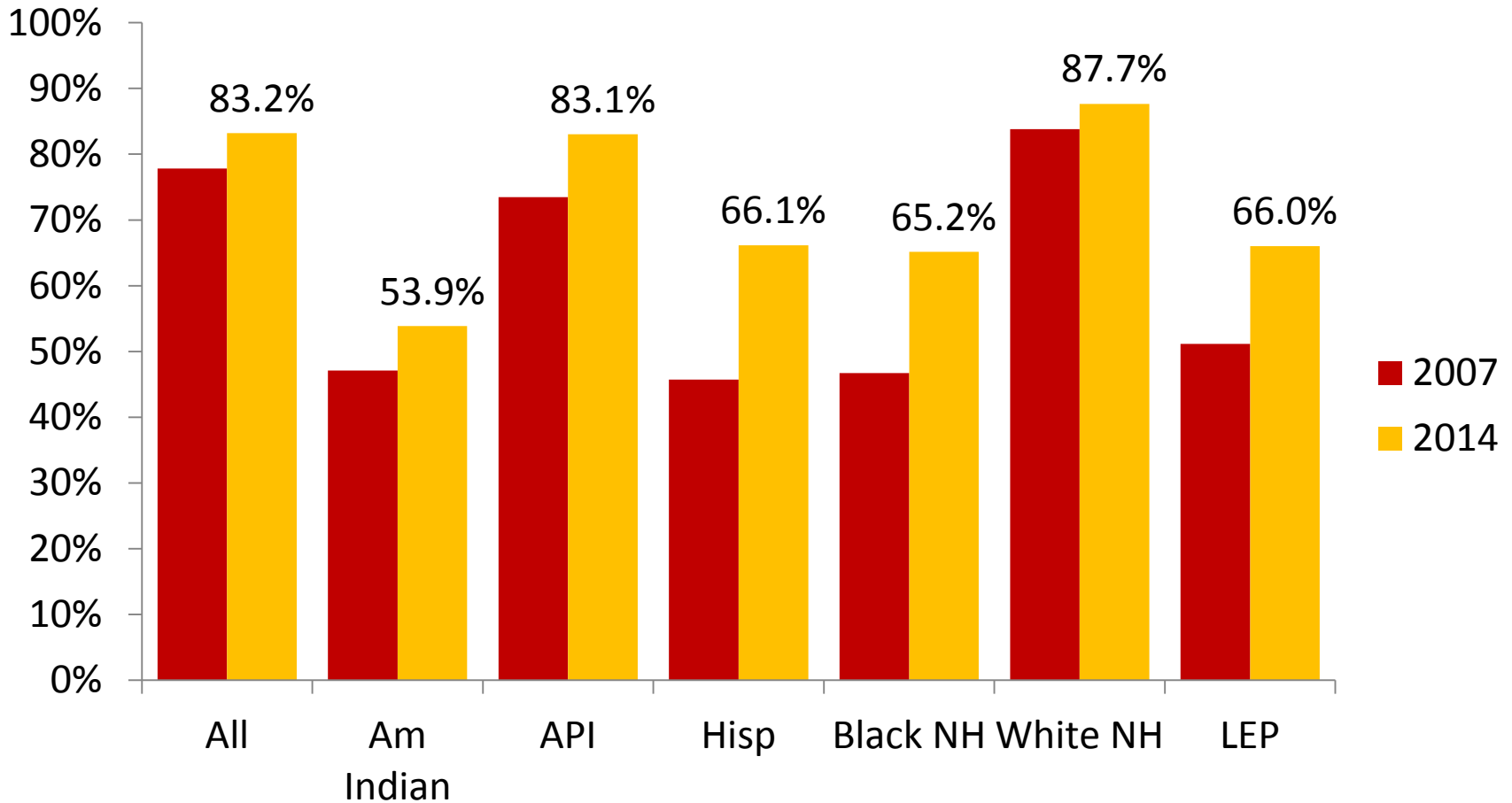


# Change In Minnesota High School Graduates (5 Year) Between School Years Ending In 2007 and 2014





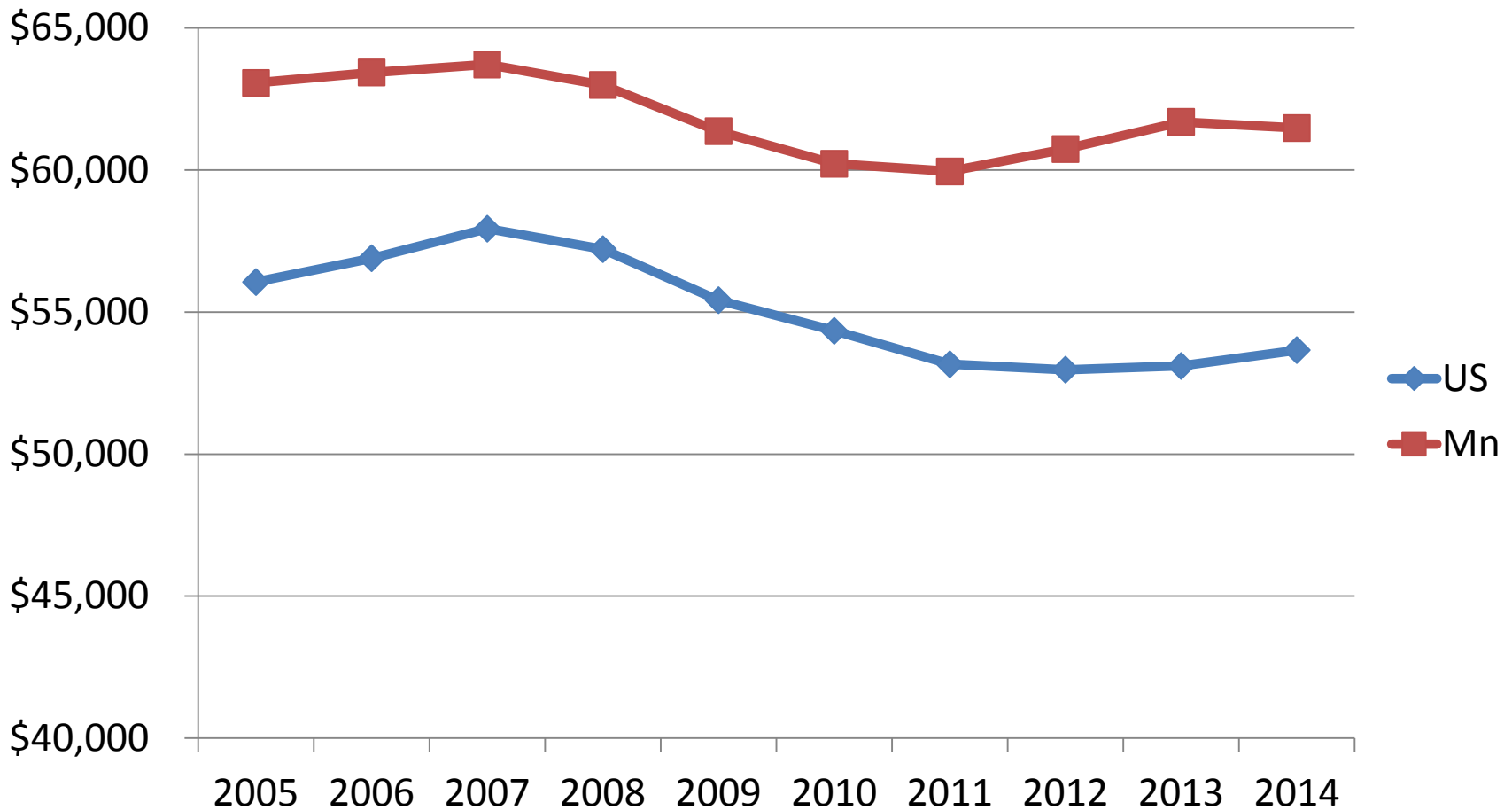
# Minnesota Five Year High School Graduation Rates For Years Ending In 2007 and 2014



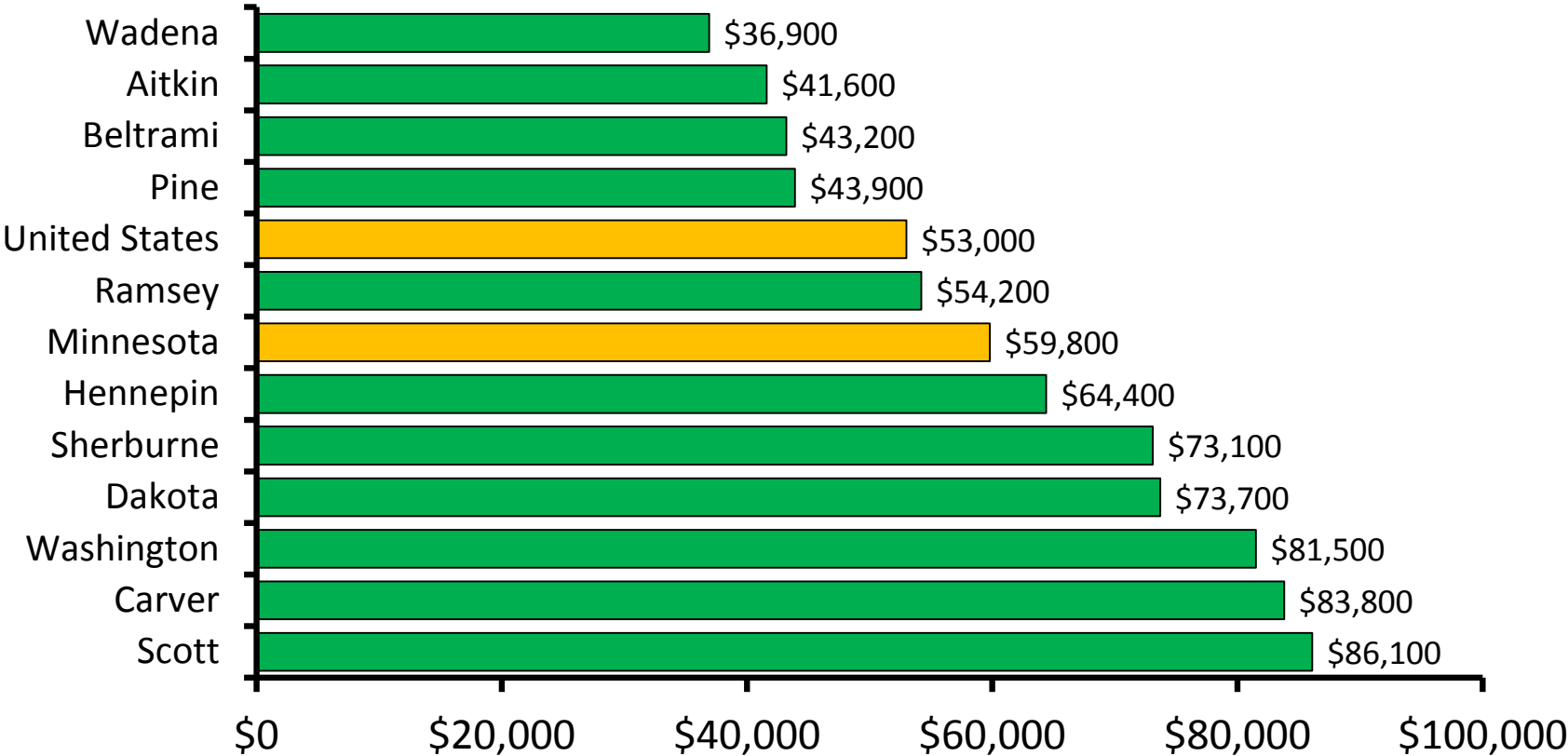
Mn Dept of Education

tom.gillaspy@comcast.net

# Real Median Household Income Has Been static To Declining For More Than A Decade



# Median Household Income (2009-13) Of Selected Counties



Census Bureau estimate

tom.gillaspy@comcast.net