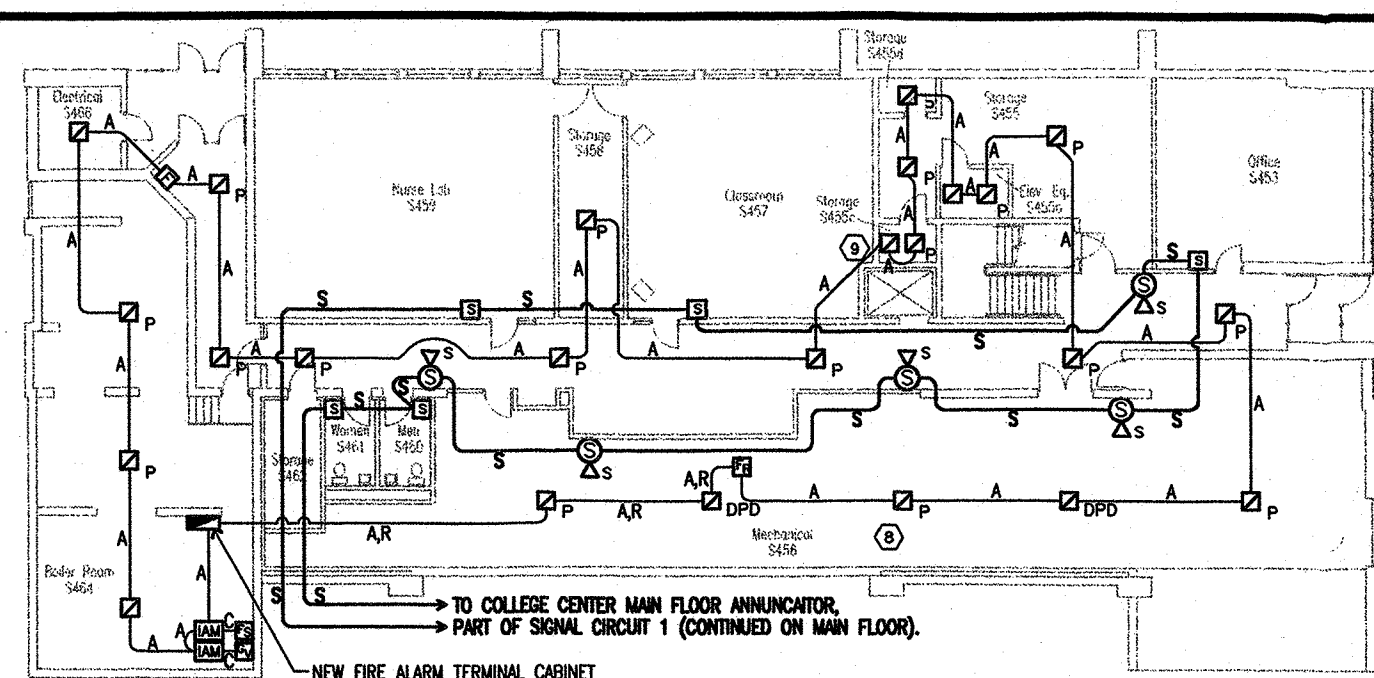


Science Building Main Floor
SCALE: 1/16" = 1'-0"



Science Building Lower Level
SCALE: 1/16" = 1'-0"

PLAN NOTES:

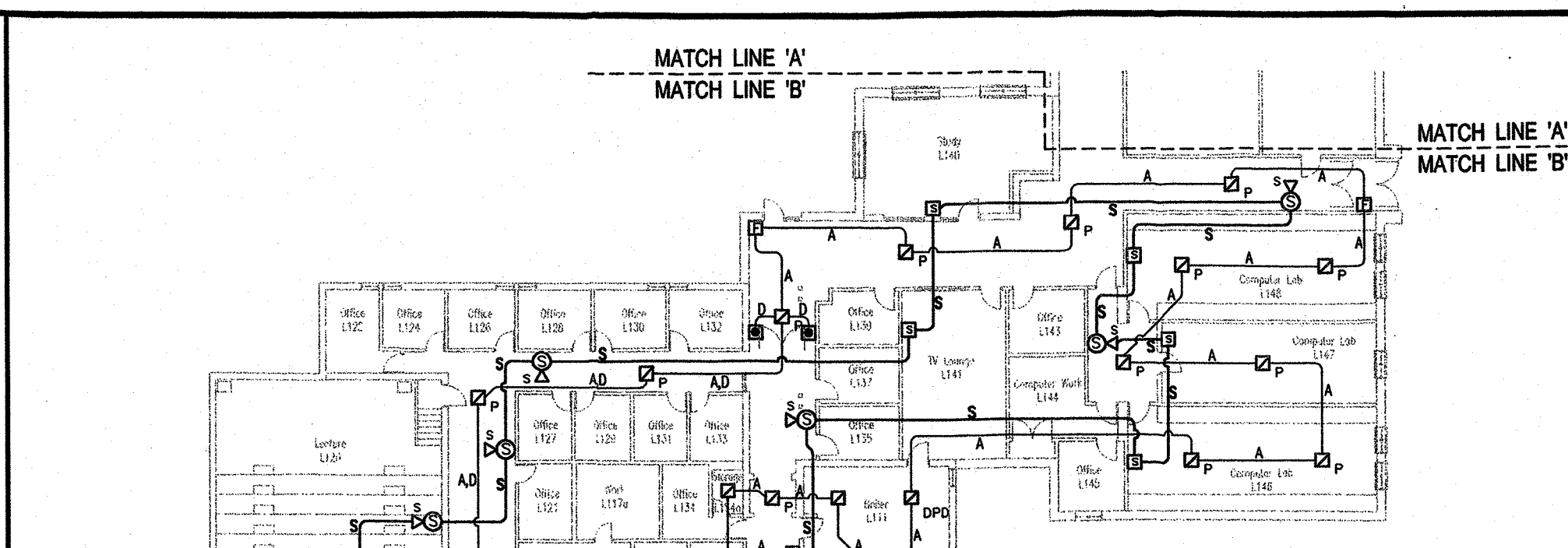
- TO COLLEGE CENTER MAIN FLOOR ANNUNCIATOR, SIGNAL CIRCUIT 2 OF 3.
- NEW FIRE ALARM ANNUNCIATOR PANEL WITH MICROPHONE FOR VOICE EMERGENCY ANNOUNCEMENTS. SURFACE MOUNT. PROVIDE SURFACE RACEWAY UP TO CEILING SPACE FOR CABLES. DEVICES LOCATED IN BALCONY. VERIFY FINAL LOCATIONS.
- PROVIDE DUCT SMOKE DETECTOR FAN RELAY, CONNECTION TO A.H. UNIT FOR FAN SHUT DOWN AND TO FIRE ALARM SYSTEM.
- SAME AS FOR NOTE #4 ONLY FOR THREE A.H. UNITS. PROVIDE SEPARATE DUCT SMOKE DETECTORS, FAN RELAYS, ETC. FOR EACH UNIT. PROVIDE TWO SYSTEM SMOKE DETECTORS AND SPEAKER/STROBE IN PENTHOUSE.
- TO COLLEGE CENTER MAIN FLOOR ANNUNCIATOR, PART OF SIGNAL CIRCUIT 1 (CONT. ON LOWER LEVEL).
- CONTRACTOR TO PROVIDE (2) 20/1120 VOLT CIRCUITS FROM FIRE ALARM MAIN PANEL TO EXISTING EMERGENCY PANEL LOCATED IN ROOM #306.
- PROVIDE NEW DUCT SMOKE DETECTORS IN AIR HANDLING UNITS. THIS TO INCLUDE FAN RELAY, CONNECTIONS TO EQUIPMENT STARTERS AND FIRE ALARM SYSTEM.
- CONNECT RECALL CIRCUIT FROM FIRE ALARM TO ELEVATOR CONTROLLER.
- DOWN TO NEW FIRE ALARM TERMINAL CABINET IN LOWER LEVEL MECHANICAL ROOM.

SYMBOL LEGEND:

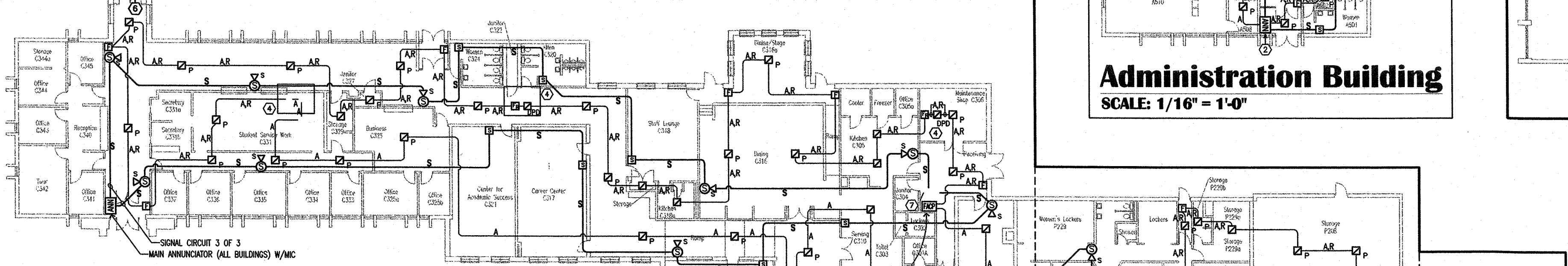
- MANUAL STATION
- HEAT DETECTOR
- SMOKE DETECTOR
- DUCT SMOKE DETECTOR
- FAN RELAY
- SPEAKER HORN W/STROBE
- STROBE
- DOOR HOLDER
- FLOW SWITCH
- GATE VALVE SUPERVISORY SWITCH
- INDIVIDUALLY ADDRESSABLE MODULE
- DRAWING NOTES
- CABINET AS NOTED
- FIRE ALARM ANNUNCIATOR W/MIC
- FIRE ALARM CONTROL PANEL

MOUNTING HEIGHTS:
48"
80"
80"

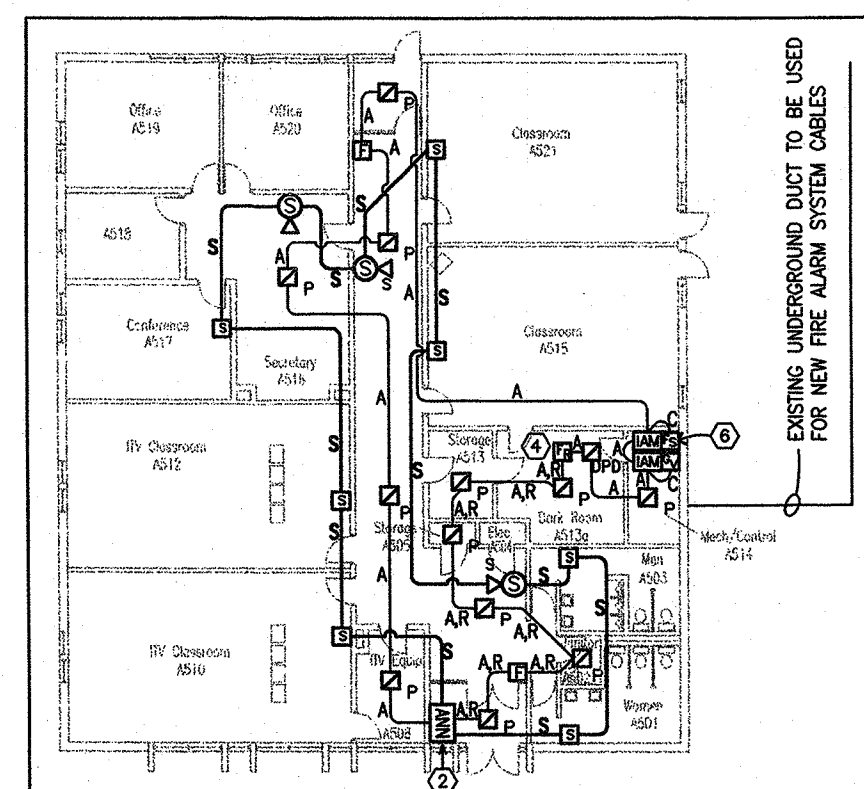
* WALL-MOUNTED AUDIO/VISUAL & VISUAL-ONLY DEVICES SHALL HAVE THEIR LENS BOTTOMS AT HEIGHTS ABOVE THE FINISHED FLOOR OF NOT LESS THAN 80 IN. (2.1 m) AND NO GREATER THAN 96 IN. (2.4 m) [NFPA 72: 6-4.4]



Library Main Floor
SCALE: 1/16" = 1'-0"

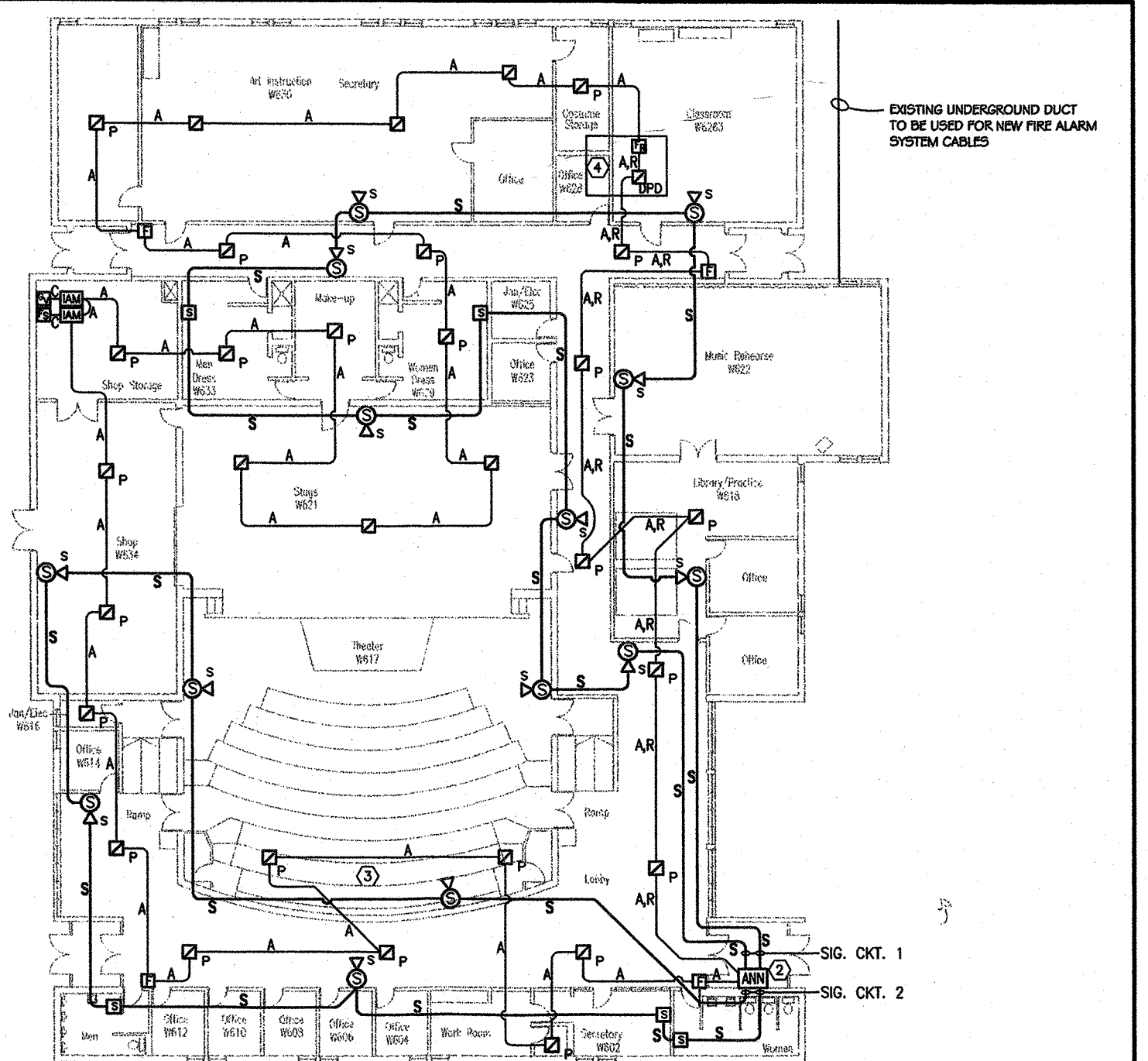


College Center Main Floor
SCALE: 1/16" = 1'-0"

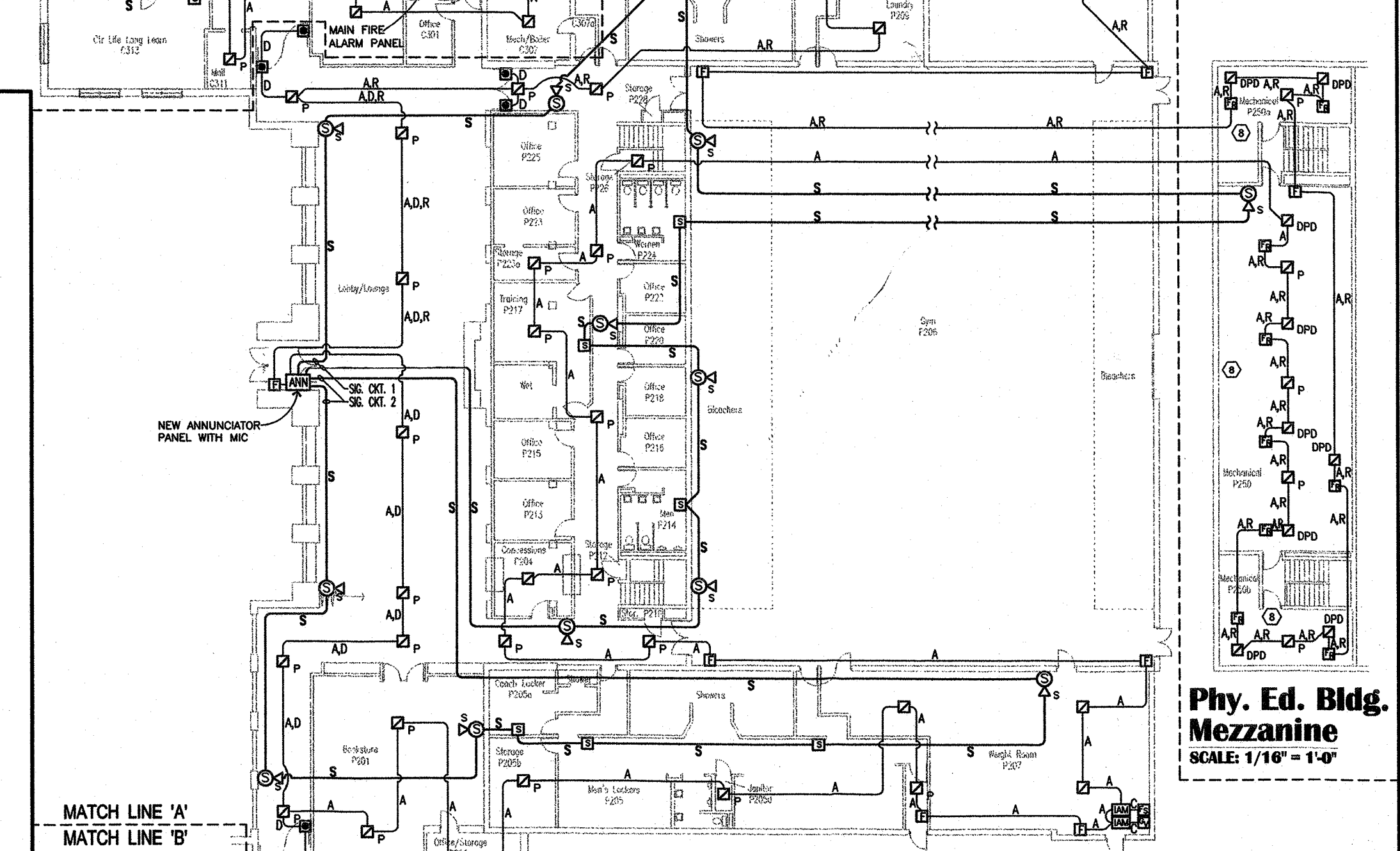


Administration Building
SCALE: 1/16" = 1'-0"

Key Plan
SCALE: 1/64" = 1'-0"



Waage Fine Arts Center Main Floor
SCALE: 1/16" = 1'-0"



Physical Ed. Bldg. Main Floor
SCALE: 1/16" = 1'-0"

WIRING LEGEND:

ALL FIRE ALARM CIRCUITS TO USE SOLID CONDUCTORS

LETTER	CONDUCTORS	COLORS (QUANTITY OF EACH, ALL THIN)	TYPE OF CIRCUIT:
A	2	1 1 1	ADDRESSABLE DEVICES
B	2	1 1 1	CONNECTION TO EQUIPMENT BY OTHERS
C	2	1 1 1	DOOR HOLDER CIRCUIT
D	2	1 1 1	SPEAKER CIRCUIT
E	2	1 1 1	MICROPHONE CIRCUIT
F	2	1 1 1	MICROPHONE CONTROL CIRCUIT
G	2	1 1 1	POWER CIRCUIT
H	2	1 1 1	RELAY CIRCUITS
I	2	1 1 1	SIGNAL CIRCUIT (SPEAKER/VISUAL)
J	2	1 1 1	VISUAL CIRCUIT
K	2	1 1 1	REMOTE UNIT INTERFACE CIRCUIT
L	2	1 1 1	ANNUNCIATOR CIRCUIT

NOTE: (USE A SEPARATE CIRCUIT, DO NOT COMBINE WITH OTHER CIRCUITS)

INTERCONNECTION DETAIL:

2ADMMR25.X NEW FIRE ALARM ANNUNCIATOR WITH MIC. WAAGE FINE ARTS CENTER	2ADMMR25.X NEW FIRE ALARM ANNUNCIATOR WITH MIC. ADMIN. BUILDING	2ADMMR25.X NEW TERMINAL CABINET - LOWER LEVEL MECH. ROOM SCIENCE BLDG.	2ADMMR25.X NEW FIRE ALARM ANNUNCIATOR WITH MIC. NEW COLLEGE CENTER	2ADMMR25.X NEW MAIN FIRE ALARM ANNUNCIATOR WITH MIC. NEW COLLEGE CENTER	2ADMMR25.X NEW FIRE ALARM ANNUNCIATOR WITH MIC. NEW PHYSICAL ED. BUILDING	2ADMMR25.X NEW FIRE ALARM ANNUNCIATOR WITH MIC. LIBRARY
120 VOLT EMERGENCY POWER 20 AMP CIRCUIT	120 VOLT EMERGENCY POWER 20 AMP CIRCUIT	120 VOLT EMERGENCY POWER 20 AMP CIRCUIT	120 VOLT EMERGENCY POWER 20 AMP CIRCUIT	120 VOLT EMERGENCY POWER 20 AMP CIRCUIT	120 VOLT EMERGENCY POWER 20 AMP CIRCUIT	120 VOLT EMERGENCY POWER 20 AMP CIRCUIT

tyco Fire & Security | **SimplexGrinnell**

SIMPLEXGRINNELL
2821 FIECHTNER DRIVE
FARGO ND 58103
(701) 237-6712

FERGUS FALLS COMMUNITY COLLEGE
FFCC FIRE ALARM UPGRADE
FERGUS FALLS, MN
MINNESOTA

REVISION HISTORY:
DATE: 5-12-03
PROJECT: FIRE ALARM SYSTEM

FFCC-1.dwg SHEET 1 OF 1