



FINANCE AND FACILITIES COMMITTEE
JUNE 18, 2014
8:00 A.M.

MCCORMICK ROOM
30 7TH STREET EAST
SAINT PAUL, MN

Please note: Committee/Board meeting times are tentative. Committee/Board meetings may begin up to 45 minutes earlier than the times listed below if the previous committee meeting concludes its business before the end of its allotted time slot.

- (1) Minutes of the Finance and Facilities Committee of May 21, 2014 (pp. 1 – 8)**
- (2) Anoka Ramsey Community College, Cambridge, Surplus Real Property (pp. 9 – 12)**
- (3) FY2015 Operating Budget (Second Reading) (pp. 13-67)**

Members

Michael Vekich, Chair
Dawn Erlandson, Vice Chair
Duane Benson
Phil Krinkie
David Paskach
Thomas Renier
Elise Ristau

Bolded items indicate action required.

MINNESOTA STATE COLLEGES AND UNIVERSITIES

BOARD OF TRUSTEES

FINANCE AND FACILITIES COMMITTEE

MEETING MINUTES

May 21, 2014

Finance and Facilities Committee Members Present: Chair Michael Vekich, Trustees Duane Benson, Dawn Erlandson, Philip Krinkie, David Paskach, Thomas Renier, and Elise Ristau

Other Board Members Present: Ann Anaya, Margaret Anderson Kelliher, Alexander Cirillo, Cheryl Dickson, Clarence Hightower, Maria Peluso. Louise Sundin

Leadership Council Representatives Present: Chancellor Steven Rosenstone, Vice Chancellor Laura King, President Phil Davis, and President Richard Hanson

The Minnesota State Colleges and Universities Finance and Facilities Committee held its meeting on May 21, 2014, 4th Floor, McCormick Room, 30 East 7th Street in St. Paul. Chair Vekich called the meeting to order at 9:50 a.m.

1. Minutes of April 23, 2014

The minutes of the April 23, 2014 Finance and Facilities Committee were approved as published.

2. Finance and Facilities Update

Vice Chancellor King reported that Minnesota Management and Budget's loan balance to Minnesota State Colleges and Universities (MnSCU) is currently \$400 million. The loan is scheduled to be paid back in full by June 30, 2014. It is unknown if this loan arrangement will be needed in the future.

There was a communication sent to the campuses reminding them of the new financial aid process. Fall and spring processing went very well and this will be MnSCU's first summer session with the new process.

Standard & Poor's conducted a mid-term analytical review with MnSCU. It is expected that the revenue fund will continue its stable credit rating of AA-. Standard & Poor's identified low debt levels, strong operating results and an overall diversified student population as positives. Risks included reliance on state support and high school enrollment declines.

Negotiations are currently underway with MSCF, IFO and MSUAASF. With supplemental funding secured, contracts are expected to settle quickly. Financial Planning and Analysis staff are supporting the collective bargaining negotiation process by costing various proposals from management and the unions and responding to data requests.

Chancellor Rosenstone has invited faculty, staff, unions, students and campuses to submit ideas that will help form MnSCU's 2016-2017 biennial budget request. Presidents have begun conversations on their campuses. The first reading of the 2016-2017 legislative request is scheduled for October 2014.

There was a ground breaking for Metropolitan State University's Student Union and Parking Ramp on May 2nd. The community is very excited for the project, especially since the new science building was funded by the legislature. Trustee Hightower asked if there was any resolution to the property acquisition on Bates Avenue. Vice Chancellor King replied that there has been no agreement reached with the seller, and MnSCU is now working with the Department of Transportation to acquire it under eminent domain. The work on the parking ramp at Metropolitan State has continued throughout this process and is still on track with the construction timeline. The project is expected to be completed in October, 2014.

Trustees will be hearing the second reading of the FY2015 operating budget in June, receiving the 2nd quarter CIP report in July or August, hearing the preliminary 2016-2017 biennial legislative request in October, and reviewing the 2014 financial statements in November.

3. FY2015 Operating Budget (First Reading)

Vice Chancellor Laura King introduced Leadership Council liaisons, President Hanson, President Davis, and Deb Bednarz, Director for Financial Planning and Analysis.

The FY2015 operating budget places a strong emphasis on protecting affordability, supporting the strategic framework's goal of offering the highest value/most affordable higher education option in Minnesota. In addition to offering low tuition, efforts to increase student scholarships help make post-secondary education an even more affordable option for MnSCU students.

At the time the FY2014 operating budget was approved by the Board, the legislature appropriated only enough on-going funding to support a 2.6 percent increase for salary and compensation increases. After the FY2014 system operating budget was approved last June, state-negotiated employee contracts for MnSCU classified employees settled in excess of the original 3 percent planning estimates. In response to this increased funding gap, the system requested supplemental funding in the 2014 legislative session. The legislature appropriated an additional \$17 million to the system in FY2015 for compensation costs. This appropriation is on-going and will be added the system's base funding in the 2016-2017 biennium.

Vice Chancellor King reported that at the time the operating budget report was prepared, the legislative outcome was unknown, so colleges and universities had not finalized their operating budgets. The budgets are being finalized now and will be presented to the Board at the June meeting.

At each Trustees' place were the FY2015 operating budget supplemental report and attachments. The individual revenue and expense outlooks for each college and university will be presented in June.

Vice Chancellor King showed a graph (previously named the "Benson" table) showing the estimated net cost of tuition by income level after state & Pell grants are applied. It will be updated in June for FY2015 with information on changes to the state grant program taken into account. The table illustrated that for very low income students and families, tuition at a MnSCU college or university is very affordable. For students receiving a state grant, the annual cost of tuition for a full-time student is \$1,421 at a state college and \$2,285 dollars at a state university. These costs are expected to be the same, if not lower in FY2015. Even for students receiving no financial grant aid, the average annual cost of tuition at a state college is \$4,816 and at a state university is \$6,782. With the tuition freeze remaining in effect, these costs will not change in FY2015.

A chart from the Chronicle of Higher Education illustrated that all MnSCU institutions offer the most affordable higher education options in the state. To keep tuition and fees affordable, the Chancellor instructed presidents to keep student fee increases at no more than three percent and graduate tuition increases also at three percent. After student fee increases are added to the 2015 flat tuition rates for undergraduates, the total average annual undergraduate tuition and fees are expected to increase by 0.2 percent at the colleges (or \$13) and 0.7 percent (or \$54) at the universities, with the overall system impact at 0.4 percent (or \$21). Vice Chancellor King noted that the student fees are for specific purposes such as parking and technology and have been supported, and many times, proposed by students at their campuses.

Tuition and fees at colleges have been essentially flat from 2011 to 2014, and increased less than one percent since 2005; University tuition and fees have increased less than one percent since 2009, unlike trends at private colleges and universities and the University of Minnesota.

MnSCU also promotes the most affordable pathways to attaining a baccalaureate degrees by continuing to work with K-12 partners on expanding and improving PSEO and concurrent enrollment options. Based on current tuition and fees, students who complete two years of college through PSEO and then transfer to a MnSCU university for the last two years, would pay approximately \$15,000 for tuition and fees; If students choose to attend a state university for all four years, the gross cost is approximately \$30,000, compared to spending over \$50,000 at the University of Minnesota and nearly \$140,000 at a private college in Minnesota.

Strong support was received from the governor and the legislature this session, for the operating budget and for the capital budget.

State support for the system has increased significantly during the 2014-2015 biennium. State funding for the 2014-2015 biennium now totals \$1.21 billion, almost \$119 million or

10.9 percent greater than the 2012-2013 biennium. State funding will increase from \$587.9 million in FY2014 to \$622.1 million in FY2015, an increase of \$34.2 million or 5.8 percent. The system will also see improvement in state support per MnSCU student FYE, when adjusted for inflation. Between FY2002 and FY2012, student support per student FYE decreased by over 40 percent (in constant dollars) to \$2,787 per student. During the 2014-2015 biennium, student support per student FYE (in constant dollars) is anticipated to improve to \$3,245, a 16 percent increase since FY2012. Even after the strong increase this biennium, per FYE funding remains 32 percent below 2002 funding levels in constant dollars.

In inflation-adjusted dollars, state support per student is projected to increase from \$3079 in FY2014 to \$3,245 in FY2015, a \$166 or 5.4 percent increase.

Vice Chancellor King pointed out that the majority of new state funds (\$78 million) was used to freeze tuition, essentially replacing tuition revenue with state funds.

After experiencing record enrollment growth from 2006 to 2011, enrollment has fallen in recent years. FY2014 enrollment is now projected to decline 3.5 percent over 2013 levels. College enrollment declines (4.4 percent) have been more significant than enrollment drops at the universities (2.0 percent). Current projections for FY2015 from MnSCU colleges and universities show a continued decline in enrollment of 1.6 percent, with colleges expecting larger declines (1.8 percent) than the universities (1.2 percent). An improving economy and underlying demographics are believed to be the primary factors influencing enrollment. A historical analysis of 20 years of enrollment data conducted by system office Research found that four factors explained much of the change in enrollment - number of high school graduates, the population of 25-34 year olds, the unemployment rate and, per capita income.

Trustee Krinkie said that some students will be midway in their education path when the tuition freeze goes away and asked if they would experience a significant jump in tuition. Vice Chancellor King responded that this is a risk management issue and Chancellor Rosenstone is attentive to it. Also, Charting the Future work addresses affordability. The Board would expect only limited increases in tuition and there is no tuition “catch-up” strategy once the freeze is lifted. Similarly, when ARRA money was received to subsidize tuition, MnSCU students did not see large increases when the funding ended. Trustee Benson commented that no one can predict the economy and it was the legislature that implemented the tuition freeze, not the Board. Trustee Renier added that enrollment does not keep up with a recession recovery. Chancellor Rosenstone acknowledged the Board’s commitment to affordability.

Revenue fund fees support auxiliary facilities, such as residence halls, student unions, parking, and other revenue generating facilities. Room and board fees will increase an average of 3.65 percent, and student union fees will increase by an average of 1.55 percent in fiscal year 2015.

New revenue fund projects that are in progress or nearing completion in fiscal year 2015 will be implementing their planned fees. The Board materials detail the fee changes in the supplemental materials.

Annual fees charged to all students except at Metropolitan State University and St. Paul College, are recommend to increase an average of \$3.50 per credit at the colleges and \$11 per credit at the universities.

Colleges and universities have been discussing the fiscal year 2015 budget with students for several months. Overall, students report they are satisfied that the consultation process went well and that their presidents and cabinets are working hard to include them in the budget review process. A summary of the consultation letters is found in the supplemental package and will be posted on the MnSCU website.

St. Cloud State University is requesting an exception to the maximum rates charged for student life/activity and health services fees. Due to recent enrollment declines and increasing health care costs, the university believes it is necessary to increase both fees; however, the university currently charges the Board approved maximum rate for both fees. At the request of St. Cloud State University's students and campus leadership, the Chancellor is recommending that the Board approve the request.

The Finance division staff is committed to working with Student Affairs and Finance staff on the campuses to undertake a study this year on the question of student health services and a long term plan for the delivery of services on and near our campuses.

In addition to finalizing budgets, staff is working to update the cost of attendance analysis. The Finance and Facilities committee and the Board of Trustees will be asked to approve fiscal year 2015 operating budget including the tuition and fee structure at the June meeting.

4. Legislative Results Including 2014 – 2019 Capital Budget

Brian Yolitz, Associate Vice Chancellor for Facilities, reported on the results of the 2014 capital bonding bill. In June 2013, the Board of Trustees approved their capital bonding recommendation for 2014. This recommendation was a \$286.5 million program including \$110 million for Higher Education Asset Preservation and Replacement (HEAPR), \$20.6 million for targeted demolition of obsolete space and \$155.9 million for 24 priority projects across the system.

On May 16, 2014, the legislature forwarded to the governor bills funding a \$1.1 billion statewide capital investment program. Higher education received roughly 25 percent of the approved construction funding.

The approved conference committee report provided MnSCU \$159.8 million for construction with \$42.5 million going towards HEAPR and \$117.3 million for funding 13 capital bonding priorities on 19 campuses. This funding represents 56 percent of the Board's original total program request, 38 percent of the requested HEAPR and 66 percent of the requested capital

projects. Mr. Yolitz noted that there was no funding for demolition, however, some demolition is embedded in the projects.

Mr. Yolitz thanked the House, Senate and Governor Dayton for their leadership and support and MnSCU faculty, staff, students, and campus leadership for being terrific ambassadors for the Board's 2014 capital program recommendation.

Mr. Yolitz noted that details on the Board's original request and actual program funding capital program funding history and the 2014 project execution timeline are included in the Board materials.

Staff is preparing authority delegation to the campuses to proceed with this work as the Board outlined in approval of the 2014 capital bonding request in June, 2013. Board members and the public will receive routine updates on project execution through the Capital Improvement Program (CIP) reporting posted quarterly to the MnSCU website and mailed directly to Trustees.

Mr. Yolitz said that if opportunities should arise for capital bonding in 2015, the Board may be asked to support funding those priorities approved for 2014, but not fully funded. The Board may also be asked to support funding of the 'tails' of projects approved and funded during the 2014 legislative session. The chancellor will consult with the Board on integrating and prioritizing a recommendation prior to the start of the legislative 2015 session.

Chancellor Rosenstone thanked Mr. Yolitz and his team for their work and noted there were 47 visits to campuses by Minnesota Management and Budget and legislators, yielding positive results for MnSCU students.

Trustee Renier asked if HEAPR funding prioritizes urgent needs or routine maintenance. Mr. Yolitz replied that HEAPR funds address priorities at the campuses. Now knowing the results of the funding, priorities will be reaffirmed along with the cost of the repair and maintenance. The Facilities Condition Index (FCI) of each campus is a factor.

Trustee Erlandson asked how MnSCU facilities compare to other states across the nation. Vice Chancellor King replied that MnSCU only carries 1/3 of the debt service on projects because of state funding, providing for a good balance sheet. On the FCI side, MnSCU is about average. Because universities have been around longer than the colleges, there is more need for repair at the universities. Trustee Dickson expressed appreciation for new projects with embedded demolition because stand-alone demolition is always a hard sell.

Melissa Fahning gave a summary of the 2014 legislative session. Ms. Fahning reported that lawmakers had a budget surplus of \$1.2 billion to work with during the 2014 legislative session. Current law requires any forecast balance to be used to repay the K-12 shift, so the first \$246 million of the balance was used to complete that payment. In addition, \$15 million was transferred to the state airports fund, restoring money originally borrowed in 2008, leaving a forecasted balance of \$825 million. Early in the session, Governor Dayton signed two tax relief bills into law, providing \$550 million in tax relief to Minnesota tax payers.

Governor Dayton called for the elimination of excessive laws, rules, and regulations, calling it the “unsession”. MnSCU, along with the University of Minnesota and the Office of Higher Education, submitted proposals, resulting in a higher education bill that streamlined the higher education statutes. It was signed into law early in the session.

Ms. Fahning reported on some of the policy provisions in the supplemental budget bill. There was language requiring study abroad programs at all colleges and universities to report on the safety and security of the programs to the Secretary of State. That information will be published on their website.

There is language requiring colleges and universities to provide resident tuition for veterans. MnSCU Board Policy 2.2 already provides for not only resident tuition for current and former members of the military, but also their spouses and dependent children.

The state authorization reciprocity agreement (SARA) is a national initiative to provide access to online programs while maintaining compliance standards with state regulatory agencies. SARA allows institutions to provide online courses outside of their own state borders by seeking and maintaining state approvals via a streamlined regional process. This legislative change will allow the Office of Higher Education to maintain high standards for institutions outside of Minnesota, while at the same time allowing Minnesota based colleges and universities to attract students from outside the state.

The bill includes language regarding student loan refinancing. The Office of Higher Education is to report back to the Legislature by Feb. 1, 2015 regarding its plans and proposed terms and conditions for operating a student loan refinancing program.

The bill addresses transfer, and requires the appropriate Charting the Future implementation team to develop a plan to implement multi-campus articulation agreements that lead to baccalaureate degree completion after transfer to a system university from a system college.

There was also a proposal this session to use the state grant surplus of \$20.5 million to increase the living and miscellaneous expense allowance, or LME, from \$7,900 to \$8,300; as well as increase the tuition cap in the state grant program from \$13,000 to \$13,620. Conferees did not adopt this recommendation in the final bill. Current law mandates any state grant surplus to be used to increase the LME, so by default, MnSCU students will be eligible for a higher LME allowance as will all participants in the state grant program. The Office of Higher Education is anticipating the LME for fiscal year 2015 to increase to \$8,490 on a one-year basis. The average increase for a state grant will be \$118.

The E-12 education policy bill that passed this session removes the prohibition that colleges and universities cannot advertise PSEO based on financial grounds, only on education or programmatic grounds. The E-12 education article in the supplemental budget bill amends the policy bill so that a college or university may only advertise a cost savings to PSEO students in a school district with 700 students or more in grades 10, 11 and 12. Information on PSEO enrollment must be posted on the school’s website.

Trustee Sundin stated that in the education policy bill there in is an emphasis on English Language Learners and it will require additional teacher preparation. Trustee Sundin said MnSCU should be mindful of this opportunity in terms of urgency.

The jobs and economic development article in the supplemental budget bill includes an increase of \$475,000 one-time funds in fiscal year 2015 for the Minnesota Jobs Skills Partnership program, a program through which many colleges and universities receive grants. This is great news for MnSCU institutions.

There is also one-time funding of \$250,000 and language in the bill for the Department of Labor and Industry (DOLI), in collaboration with DEED, to establish competency standards for programs in advanced manufacturing, health care services, information technology and agriculture.

Other bills relevant to MnSCU included a contract ratification bill that includes salary increases for certain state employees.

The omnibus pension bill includes an extension of the MnSCU early retirement incentive program, scheduled to expire on June 30, 2014. The bill extends the sunset date to June 30, 2019.

This property acquisition bill regulates the acquisition of land by state agencies, including MnSCU. Under this bill, an agency must not pay more than ten percent above the appraised value for property where valued in excess of \$100,000. Trustee Krinkie asked if this bill complicates the Bates property acquisition for Metropolitan State University. Vice Chancellor King replied that this would only apply if MnSCU were working with a willing seller. Under an eminent domain environment, this language does not apply.

Ms. Fahning said lawmakers are scheduled to return to St. Paul for the 2015 legislative session Tuesday, January 6, 2015. There were some announced retirements, and the House is up for re-election in the fall.

Ms. Fahning thanked the Board, Vice Chancellor King and her staff and the campuses for helping to make the 2014 legislative session a success.

The meeting was adjourned at 11:42 a.m.

Respectfully submitted,

Laury Anderson, Recorder

**MINNESOTA STATE COLLEGES AND UNIVERSITIES
BOARD OF TRUSTEES**

Agenda Item Summary Sheet

Name: Finance and Facilities Committee

Date: June 18, 2014

Title: Anoka Ramsey Community College, Cambridge, Surplus Real Property

Purpose (check one):

- | | | |
|---|--|---|
| <input type="checkbox"/> Proposed
New Policy or
Amendment to
Existing Policy | <input checked="" type="checkbox"/> Approvals
Required by
Policy | <input type="checkbox"/> Other
Approvals |
| <input type="checkbox"/> Monitoring /
Compliance | <input type="checkbox"/> Information | |

Brief Description:

Anoka Ramsey Community College requests the Board of Trustees to designate the property located at the southwest corner of State Highway 95 and County Road 70 in Cambridge, adjacent to campus, as surplus real property.

Scheduled Presenter(s):

Brian Yolitz, Associate Vice Chancellor for Facilities

**BOARD OF TRUSTEES
MINNESOTA STATE COLLEGES AND UNIVERSITIES**

BOARD ACTION

Anoka Ramsey Community College, Cambridge, Surplus Real Property

Anoka Ramsey Community College requests the Board of Trustees to designate the property located at the southwest corner of State Highway 95 and County Road 70 in Cambridge, adjacent to campus, as surplus real property.

BACKGROUND

The subject property is an approximate 6.35 acre roughly rectangular shaped parcel located at the southwest corner of State Highway 95 and County Road 70 in Cambridge. A map showing the location in relationship to campus is identified on **Attachment A**. The building labeled “Humanities building” is located on the site in question. The subject property is located across the street from the main campus and less than a mile from downtown Cambridge. The subject property includes a portion of the parking lot, although the college intends to maintain approximately 100 stalls to support the adjacent athletic fields.

The subject property currently contains a metal Humanities building on site. In 2007, when the college moved administration, faculty and classes into their second phase addition across County Road 70 on the main campus, the college razed the Administration buildings, leaving the metal, pre-engineered Humanities building.

Despite its functional obsolescence, the college continued to use the pre-engineered building for classes until 2010. In the master facilities plan update in 2010, the report concluded that the college should decommission and demolish the building and consider the sale of the related property. The property is not needed for the long term master planning of the campus. At about the same time, the state’s Department of Military Affairs constructed an Armed Forces Reserve Center adjacent to the subject property. The college used that opportunity to vacate the pre-engineered building and lease space in the AFRC for college training classes.

When the college vacated the building in 2010, utilities were shut off and the building was closed down. The building has a current Facilities Condition Index (FCI) of 0.29, which is one of the worse FCI’s in the system. In response to a solicitation for demolition projects, the college submitted the building for inclusion in the \$20.6 million demolition initiative in the system’s 2014 capital budget request. When the demolition initiative was not funded in the 2014 bonding bill, the college decided to update its appraisal of the property and position the subject property for surplus and a sale.

Under state statute, the Board may declare state lands or improvements under its control that are no longer needed by the system to be surplus. Under the statute, MnSCU offers the property first to the city, county and school district for no less than the appraised value. If no offers are forthcoming, the property is placed for sale to the general public. Under state law, the sale proceeds are retained by the college for other capital improvement uses.

The city of Cambridge indicates that there is interest in this parcel from for-profit entities, given its location on the positioning along Highway 95. The city would like to see a taxable entity on the property, and the college would like to see an entity that would provide goods or services that would complement the community and campus. There are no known restrictions on the parcel from a tax or zoning position. Given the city's statutory position to make a first offer, there is some expectation that the city would signal an interest and facilitate a purchase.

Currently there is a semaphore located at the intersection of Hwy 95 and Co. Road 70/Spirit River Drive. The college anticipates that the city may rework the intersection and access to the subject property and parking lot after the sale.

The college obtained its most recent independent real estate appraisal in 2014. The subject property was appraised between \$755,000 - \$815,000. The sale would be "as is", and any buyer would be responsible for demolishing and disposing of the building on site.

RECOMMENDED COMMITTEE ACTION:

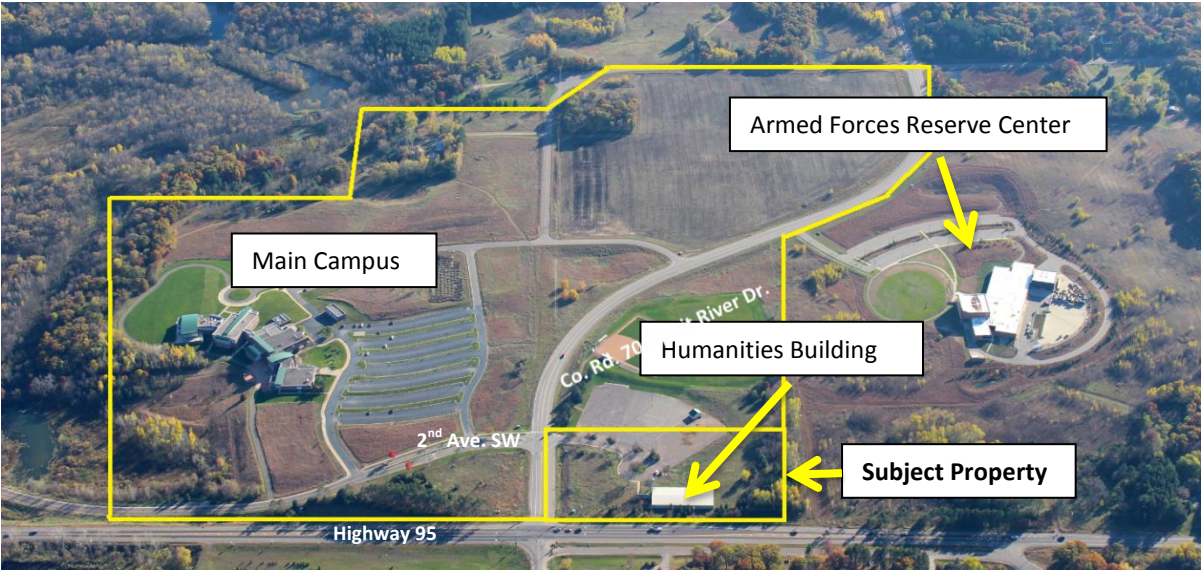
Finance and Facilities Committee recommends the Board of Trustees adopt the following motion:

The Board of Trustees designates the subject property, an approximate 6.35 acre roughly rectangular shaped parcel located at the southwest corner of State Highway 95 and County Road 70 in Cambridge, as surplus, and delegates authority to the Chancellor or the Chancellor's designee to execute such documents as may be necessary to complete the sale for no less than the appraised value.

RECOMMENDED MOTION:

The Board of Trustees designates the subject property, an approximate 6.35 acre roughly rectangular shaped parcel located at the southwest corner of State Highway 95 and County Road 70 in Cambridge, as surplus, and delegates authority to the Chancellor or the Chancellor's designee to execute such documents as may be necessary to complete the sale for no less than the appraised value.

Attachment A – Area Map Showing Subject Property and Surrounding Properties



**MINNESOTA STATE COLLEGES AND UNIVERSITIES
BOARD OF TRUSTEES
Agenda Item Summary Sheet**

Name: Finance and Facilities Committee

Date: June 18, 2014

Title: FY2015 Operating Budget (Second Reading)

Purpose (check one):

Proposed
New Policy or
Amendment to
Existing Policy

Approvals
Required by
Policy

Other
Approvals

Monitoring /
Compliance

Information

Brief Description:

Board Policy 5.9, Biennial and Annual Operating Budget Planning and Approval, requires the Board of Trustees to approve the systemwide annual all funds operating budget plans for colleges, universities and the system office. Board Policy 5.11, Tuition and Fees, requires the Board of Trustees to approve the tuition and fee structure for all colleges and universities.

This is the second reading of the Minnesota State Colleges and Universities' fiscal year 2015 (FY2015) operating budget, including tuition and fees. The fiscal year 2015 all-funds operating budget includes revenue and expenditure budgets for all colleges, universities and the system office and totals \$1.9 billion.

Scheduled Presenter(s):

Laura M. King, Vice Chancellor - CFO
Deborah Bednarz, Director – Financial Planning and Analysis

**BOARD OF TRUSTEES
MINNESOTA STATE COLLEGES AND UNIVERSITIES**

ACTION ITEM

Fiscal Year 2015 Operating Budget (Second Reading)

BACKGROUND

The Board of Trustees is being asked to approve the annual operating budget of Minnesota State Colleges and Universities and the tuition and fee structure that will be in effect from July 1, 2014 to June 30, 2015. The fiscal year 2015 operating budget incorporates the actions of the recently concluded 2014 legislative session, including \$17 million in supplemental funding appropriated for fiscal year 2015. This is the second reading of the fiscal year 2015 operating budget.

The fiscal year 2015 operating budget materials include enterprise level information and analysis as well as detailed budget, tuition and fee information for each college and university. Materials in the board packet include:

- Fiscal year 2015 operating budget overview
- Net cost of education analysis
- All-funds budget overview
- Reallocation information
- Detailed tuition and fee charges, including revenue fund fees
- College and university general fund and all-funds budgets
- Additional supplement materials

EXECUTIVE SUMMARY

- The fiscal year 2015 operating budget places a strong emphasis on protecting affordability, supporting the strategic framework's goal of offering the highest value/most affordable higher education option in Minnesota. The undergraduate tuition freeze will be extended for a second year, with rates remaining at 2012-2013 academic year levels. Graduate tuition rates and student fees will also be limited to rate increases of three percent.
- The all-funds and general fund budgets reflect the tuition freeze, increased state funding and softening enrollment. The \$1.9 billion all-funds budget and \$1.5 billion general fund budget are the cumulative total of individual college, university and system office budgets.
- The legislature provided an additional \$17.0 million in on-going funds to Minnesota State Colleges and Universities in fiscal year 2015 for contract settlements. Total

state appropriation for fiscal year 2015 is \$622.1 million, \$34.2 million or 5.8 percent greater than fiscal year 2014.

- The fiscal year 2015 operating budget includes \$7.278 million in state funding for leveraged equipment, providing students the opportunity to be trained on state-of-the-art equipment they will likely use in the workplace. This hands-on experience will increase the skillsets of MnSCU students while enhancing the competitiveness of Minnesota's workforce.
- The fiscal year 2015 operating budget includes \$52.5 million in state-funded tuition relief which will be used to offset tuition revenue that would have been generated from modest tuition increases in fiscal year 2014 and fiscal year 2015.
- State grant recipients at both the colleges and universities are projected to experience net decreases in student tuition cost in fiscal year 2015, compared to fiscal year 2014. The estimated net decrease is \$191 for state grant recipients enrolled at MnSCU universities and \$170 for recipients enrolled at MnSCU colleges.
- Revenue fund fees support auxiliary facilities, such as residence halls, student unions, parking, and other revenue generating facilities. Room and board fees will increase an average of 3.65 percent, and student union fees will increase by an average of 1.55 percent in fiscal year 2015. Parking fees will increase modestly. New revenue fund projects that are in progress or nearing completion in fiscal year 2015 will be implementing their planned fees.

FISCAL YEAR 2015 OPERATING BUDGET OVERVIEW

The fiscal year 2015 operating budget focuses on affordability: Undergraduate tuition will be frozen for the second consecutive year and graduate tuition will be limited to three percent. State appropriation is expected to increase by \$34.2 million or 5.8 percent to \$622.1 million in fiscal year 2015, with most of the increased state funding dedicated to tuition relief. State support of \$17.0 million appropriated in fiscal year 2014 for compensation costs is available again in fiscal 2015 as a result of legislative and gubernatorial support this past legislative session.

Funding Priorities

Protecting Affordability

Affordability remains a legislative and board priority. Of the \$118.8 million in new funding appropriated in the 2014-2015 biennium, \$78.0 million or 66 percent was appropriated for tuition relief, \$25.5 million in fiscal year 2014 and \$52.5 million in fiscal year 2015. This funding will be distributed to colleges and universities based on undergraduate FYE enrollment and used to offset revenues that would have been generated from a tuition increase.

- In fiscal year 2014, full-time undergraduate college students saved an average of \$145 and full-time undergraduate university students saved an average of \$205 as a result of the tuition freeze.
- In fiscal year 2015, annual savings will increase to \$290 for full-time college students and \$410 for full-time university students. Over the two years, a continually-enrolled student will have saved an average of \$435 at MnSCU colleges and \$615 at MnSCU universities as a result of the tuition freeze.
- For recipients of state and Pell grants, continually-enrolled college students will have saved an *additional* \$590 on average, and continually-enrolled university students will have saved an *additional* \$429 on average over the two year period due to changes in these financial aid programs.

Investing in Faculty and Staff

The faculty and staff of Minnesota State Colleges and Universities are the foundation of the system's success. Investing in our college and university faculty and staff is necessary to provide an extraordinary education for our diverse student body, and this investment is a shared priority of the legislature and the board. The legislature provided \$34 million in state funding for the 2014-2015 biennium which will be used to pay for compensation increases.

- The legislature appropriated \$17.0 million in one-time funding in fiscal year 2014 for the retention of talented faculty and staff.
- The system received supplemental funding of \$17.0 million in fiscal year 2015 for compensation costs associated with the settlement of faculty employment contracts. The appropriation is considered base funding and will continue into the 2016-2017 biennium.

Updating Instructional Equipment

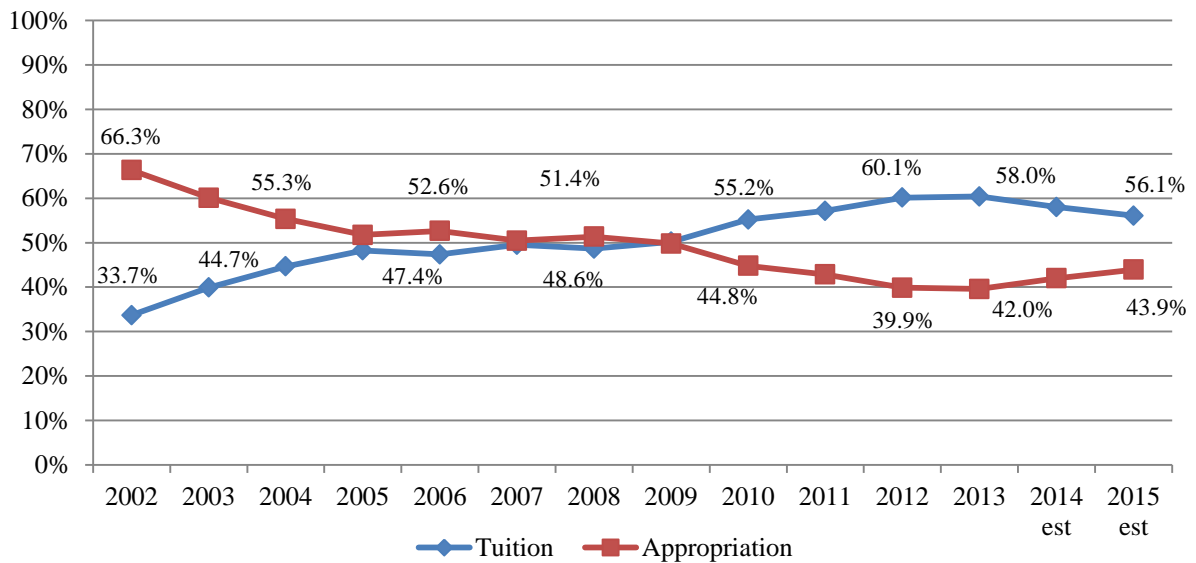
To meet the workforce needs of Minnesota employers, students must learn on state-of-the-art equipment they will likely encounter in the workplace. To advance this goal, the legislature appropriated \$7.278 million in fiscal year 2015 for leveraged equipment. The state funds must be matched dollar-for-dollar by cash or in-kind contributions from non-state sources, with details on the source of the matching funds reported to the legislature. The allocation of these funds is found in the supplemental packet (SP-5).

Funding Trends

The relationship between tuition and state support reversing

Increased state funding received over the past two years, combined with the undergraduate tuition freeze, has helped reverse the trend of greater reliance on tuition and reduced state funding for public higher education. State appropriation is now projected to account for 43.9 percent of tuition and state appropriation revenue in fiscal year 2015, compared to 42.0 percent in fiscal year 2014. Graph 1 illustrates the changing relationship between tuition and state support over time.

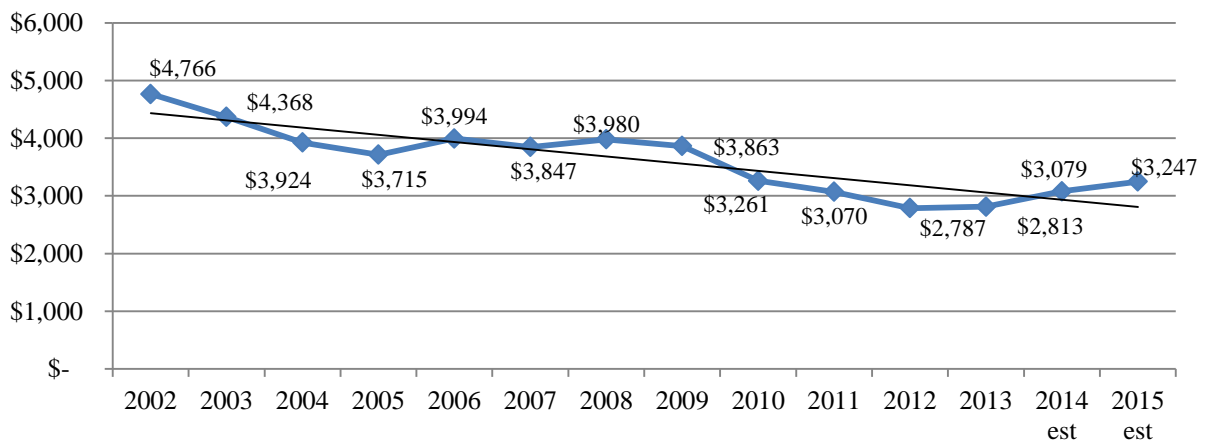
Graph 1
State Appropriation vs. Tuition Relationship
Minnesota State Colleges and Universities
Fiscal Years 2002-2015



State support per FYE student increasing

Increased state support is also reflected in another measure: state support per full year equivalent (FYE) student. Graph 2 shows the recently improved per FYE support in inflation-adjusted dollars. In fiscal year 2012, state support reached a low of \$2,787 per FYE, 42 percent lower than in fiscal year 2002. By fiscal year 2015, state support per FYE student is expected to increase to \$3,247. Even with the recently improved state funding levels, state funding per FYE is 32 percent below fiscal year 2002 levels.

Graph 2
State Appropriation per FYE in Inflation-Adjusted Dollars
Minnesota State Colleges and Universities
Fiscal Years 2002-2015



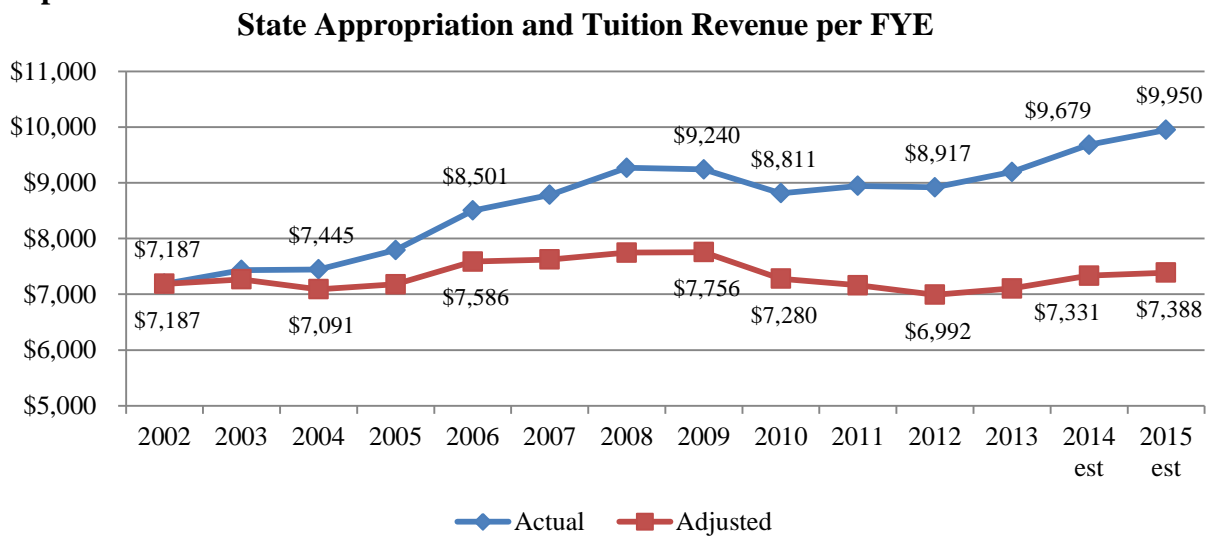
*FY2014 – FY2015 estimates
 Adjusted by Bureau of Labor Statistics CPI-U index

Tuition revenue and state support per FYE remains constant in inflation-adjusted dollars

While state support per FYE student has increased in recent years, revenue per FYE student has remained relatively constant in inflation-adjusted dollars. Graph 3 below shows the state appropriation and tuition revenue per FYE student from 2002 to 2015 in both inflation-adjusted and actual (nominal) dollars. Between 2002 and 2015, revenue per FYE student increased from \$7,187 to \$7,388 in inflation-adjusted dollars, an increase of 2.8 percent.

The stability of this measure reflects the historical relationship between the system’s two primary revenue sources: Tuition was raised in response to state funding cuts during the recession, and state funding was increased in the current biennium to support the tuition freeze. Overall, the revenue per FYE student (adjusted for inflation) has remained essentially unchanged since 2002.

Graph 3



**Minnesota State Colleges and Universities
Fiscal Years 2002-2015**

*FY2014 – FY2015 estimates
Adjusted by Bureau of Labor Statistics CPI-U index

NET COST OF EDUCATION ANALYSIS

A student’s total cost of attending a MnSCU college or university includes tuition, fees, room and board, books, supplies, transportation, and miscellaneous expenses. The net cost of attendance is the amount a student pays after financial aid grants are subtracted from the total cost of attendance. The net cost varies depending on a student’s full- or part-time status, college or university of attendance, academic program choice, and financial aid award.

Financial Aid Analysis

Need-based financial aid programs help bridge the gap between the cost of attendance and the expected family contribution, a calculation based upon family income and circumstances.

Financial Aid Highlights:

- In fiscal year 2013, the most recent year financial data is available, undergraduate students enrolled in Minnesota State Colleges and Universities received \$1.33 billion in financial aid. The majority of the financial aid was provided in the form of grants (\$451 million or 34 percent) and loans (\$816 million or 61 percent.)
- Federally-funded financial aid accounts for 82 percent of the aid received by students; state-funded financial aid accounts for 10 percent.
- Almost two-thirds of the undergraduate students attending Minnesota State Colleges and Universities receive some form of financial aid. In fiscal year 2013, 62 percent of undergraduate students enrolled at MnSCU colleges and 65 percent of undergraduate students enrolled at MnSCU universities received one or more financial aid awards, including loans that were accounted for in the system's financial aid module.
- Of those undergraduate students who received financial aid, the average award was \$7,251 for college students and \$9,994 for university students.

Change in State and Federal Grant Programs

There were two notable changes in state and federal grant programs that will impact grant aid for MnSCU students in fiscal year 2015.

- *Increase in the living and miscellaneous expense allowance for state grant recipients:* Students' cost of attendance in the state grant program includes tuition, fees and a living and miscellaneous expense allowance (LME). The LME allowance is expected to increase from \$7,900 to \$8,490. The net impact of this change will be to increase the average size of state grants for recipients, with a maximum increase of \$295.
- *Increase in Pell grants:* The maximum federal Pell grant will increase by \$85 from \$5,645 to \$5,730 in fiscal year 2015. The net impact of this change will be to increase the average size of Pell grants for recipients.

Estimated Change in Student Tuition Cost

The estimated net impact of the tuition freeze and changes in state and federal Pell grants for undergraduate students are reported by income category in Table 1 for colleges and universities.

Table 1

**Estimated Change in Student Tuition Cost by Income
Degree-Seeking Undergraduate Students
Minnesota State Colleges and Universities
Fiscal Year 2015**

State Colleges

<i>All Recipients</i>	<i>State Grant Recipients (% Change)</i>	<i>Change in Student Tuition Cost</i>
Less Than \$20,000	22,525 (4%)	-\$171
\$20,000 to \$39,999	14,528 (2%)	-\$182
\$40,000 to \$59,999	7,744 (2%)	-\$171
\$60,000 and Above	4,446 (5%)	-\$98
All Recipients	49,282 (3%)	-\$170
Non-State Grant Recipients	87,930	\$0

**Estimated Change in Student Tuition Cost by Income
Degree-Seeking Undergraduate Students
Minnesota State Colleges and Universities
Fiscal Year 2015**

State Universities

<i>All Recipients</i>	<i>State Grant Recipients (% Change)</i>	<i>Change in Student Tuition Cost</i>
Less Than \$20,000	5,097 (-1%)	-\$203
\$20,000 to \$39,999	4,316 (-1%)	-\$222
\$40,000 to \$59,999	3,459 (-1%)	-\$233
\$60,000 and Above	3,040 (2%)	-\$139
All Recipients	15,912 (0%)	-\$191
Non-State Grant Recipients	43,927	\$0

The estimates of changes in state and Pell grants are based on simulations that were prepared by staff of the Minnesota Office of Higher Education.

- Change in student tuition cost equals the change in full-time tuition (no change) and the projected increase in average state and Pell grants.
- The change in average state and Pell grants are based on projected fiscal year 2015 awards compared to estimated fiscal year 2014 awards.

Key findings:

- More college students (1,558) and about the same number of university students are projected to receive state grants in fiscal year 2015, compared to fiscal year 2014.

- State grant recipients in all income categories at both the colleges and universities are projected to experience net decreases in student tuition cost in fiscal year 2015, compared to fiscal year 2014.
- The net decreases in student tuition cost range from \$98 for college recipients in the \$60,000 and above income category to \$233 for state university recipients in the \$40,000 to \$59,999 income category.

Estimated Net Student Tuition Cost

Tuition charges paid by the student are lower when state and Pell grants are taken into account. Table 2 shows the estimated net tuition rate for full-time college and university students based on their income and assumed financial aid grant award. For purposes of this analysis, the average increases in state and Pell grants for each income category were applied against tuition costs to arrive at the estimated net student tuition cost.

Table 2

**Estimated Net Student Tuition Cost in Fiscal Year 2015
2014-15 Tuition Rate for Full-Time Students
Less Estimated State and Pell Grants
Minnesota State Colleges and Universities**

State Colleges

<i>Income Levels for State Grant Recipients</i>	<i>Average 2014-2015 Student Tuition Cost</i>
Less than \$20,000	\$626
\$20,000 to \$39,999	\$1,197
\$40,000 to \$59,999	\$2,062
\$60,000 and above	\$3,134
Average for all state grant recipients	\$1,247
Non-state grant recipients	\$4,816

State Universities

<i>Income Levels for State Grant Recipients</i>	<i>Average 2014-2015 Student Tuition Cost</i>
Less than \$20,000	\$801
\$20,000 to \$39,999	\$1,254
\$40,000 to \$59,999	\$2,671
\$60,000 and above	\$4,419
Average for all state grant recipients	\$2,022
Non-state grant recipients	\$6,782

Key findings:

- For undergraduate students receiving a state grant and attending a state college, the estimated average annual tuition cost is \$1,247.
- For undergraduate students receiving a state grant and attending a state university, the estimated average annual tuition cost is \$2,022.

ALL-FUNDS BUDGET OVERVIEW

Fiscal Year 2015 Proposed All-Funds Operating Budget

The system’s operating budget is composed of the individual operating budgets of the universities, colleges and system office. The all-funds budget encompasses all aspects of the educational enterprise: instruction, student life, technology, research, community service, administration, physical plant and residential life programs.

Tuition and state appropriation are the system’s two primary sources of revenue. Other revenue sources include fees, auxiliary/enterprise income and grants. The largest expense category is compensation which accounts for approximately two-thirds of the all-funds expenditure budget.

The proposed fiscal year 2015 all-funds operating budget is shown in Table 3.

Table 3

**Minnesota State Colleges and Universities
Fiscal Year 2015 All-Funds Proposed Budget
(Net of Scholarship Allowance)
(\$ in millions)**

(\$ in millions)	Fiscal Year 2014 Current Budget	Fiscal Year 2015 Proposed Budget	\$ Change	% Change
Revenues	\$1,919.9	\$1,924.7	\$4.8	0.3%
Expenses	\$1,907.3	\$1,919.9	\$12.6	0.7%
Budget balance	\$12.6	\$ 4.8		

Fiscal Year 2015 All Funds Operating Budget Highlights:

- The proposed fiscal year 2015 all-funds budget includes \$1.9 billion in projected revenues and expenditures. A very slight increase of \$4.8 million to the budgetary fund balance is projected.

- Fiscal year 2015 revenues are projected to increase by \$4.8 million (0.3 percent) to \$1.9 billion, compared to prior year revenues.
- Expenses in fiscal year 2015 are projected to increase by \$12.6 million (0.7 percent) over the prior year expenditures due to increased compensation costs.
- A small increase to the all-funds budgetary fund balance of \$12.6 million is projected for fiscal year 2014, accounting for 0.7 percent of total revenue.
- Colleges and universities plan to use \$17.5 million of fund balance in fiscal year 2015, equivalent to less than 1.0 percent of total revenue and consistent with the use of \$20.4 million in fund balance in fiscal year 2014.

The all-funds budget is shown net of the scholarship allowance. Approximately 89 percent (\$351.7 million) of an estimated \$393.1 million of financial aid revenue is recognized as revenue used to pay student obligations (tuition, fees, room and board, and sales and services) with the balance (\$41.4 million) reflecting the net financial aid payments to students for living expenses.

Fiscal Year 2015 Proposed General Fund Budget

The largest component of the all-funds budget is the general fund. General fund revenues and expenses account for approximately 80 percent of the all-funds budget. The proposed general fund budget is shown in Table 4.

Table 4

Minnesota State Colleges and Universities Fiscal Year 2015 General Fund Proposed Budget (\$ in millions)

	Fiscal Year 2014 Current Budget	Fiscal Year 2015 Proposed Budget	\$ Change	% Change
Revenues				
State appropriation	\$587.9	\$622.1	\$34.2	5.8%
Tuition	\$811.8	\$793.5	(\$18.3)	-2.3%
Other revenues	\$113.4	\$104.8	(\$8.6)	-7.6%
Programmed fund balance	\$14.9	\$15.0	\$0.1	0.3%
Total budgeted revenues	\$1,528.0	\$1,535.4	\$7.4	0.5%
Expenses				
Compensation	\$1,139.9	\$1,156.7	\$16.8	1.5%
Other operating costs	\$379.4	\$376.5	(\$2.9)	-0.8%
Total budgeted expenses	\$1,519.3	\$1,533.2	\$13.9	0.9%
Budget balance	\$8.7	\$2.2		

Fiscal Year 2015 General Fund Operating Budget Highlights:

- The proposed fiscal year 2015 general fund budget includes \$1.5 billion in projected revenues and expenditures.
- General fund revenues are projected to grow by \$7.4 million or 0.5 percent. The tuition freeze combined with anticipated enrollment declines accounts for the loss of tuition revenue.
- General fund expenses are projected to grow by \$13.9 million or 0.9 percent in fiscal year 2015. Compensation is expected to increase by \$16.8 million or 1.5%. This change reflects anticipated compensation increases resulting from collective bargaining contracts and reductions due to the change in enrollment. Other operating expenses are expected to decrease slightly by 0.8 percent in fiscal year 2015.
- The changes in the forecasted general fund revenues compared to expenses results in a slight budgetary balance of \$2.2 million after the use of \$15.0 million in programmed fund balance.

Allocation of State Appropriation

The fiscal year 2015 operating budget includes \$622.1 million in state appropriation, an increase of \$34.2 million over fiscal year 2014 funding levels. In addition, \$2 million of interest earnings is budgeted for total resources of \$624.1 million. The proposed fiscal year 2015 operating budget allocates these resources in four broad categories: institutional allocations, systemwide set asides, system office and the Learning Network of Minnesota.

Table 5 below summarizes how resources were allocated in fiscal years 2014 and the proposed allocation for fiscal year 2015.

Table 5

**Minnesota State Colleges and Universities
Distribution of Fiscal Year 2015 State Resources
(\$ in millions)**

	Fiscal Year 2014	% of Total	Fiscal Year 2015	% of Total
Institution allocations	\$509.9	86.4%	\$544.1	87.2%
-Basic allocations	\$468.0		\$468.5	
-Tuition buy-down	\$25.5		\$52.5	
-Priority allocations	\$16.4		\$23.1	
Systemwide set asides	\$42.8	7.3%	\$42.8	6.9%
Learning Network of Minnesota	\$4.1	0.7%	\$4.1	0.6%
System Office	\$33.1	5.6%	\$33.1	5.3%
Total state resources	\$589.9		\$624.1	

Proposed Fiscal Year 2015 Allocation of State Appropriation Highlights:

- The vast majority of state funds are allocated directly to colleges and universities. The proposed fiscal year 2015 operating budget allocates \$544.1 million or 87.2 percent of state resources directly to colleges and universities, a 0.8 percent increase over fiscal year 2014.
- Allocations to colleges and universities include \$466.5 million for basic allocations, \$52.5 million for tuition buy down, and \$23.1 million for priority allocations.
- \$466.5 million of basic allocations will be distributed through the allocation framework. The allocation framework distributes 50 percent of the funds based on the results of the fiscal year 2015 allocation framework and 50 percent based on the prior year's allocation framework.
- An estimated \$2 million in general fund interest earnings will be distributed to colleges and universities based upon their share of those earnings.
- The \$52.5 million for tuition relief will be distributed to colleges and universities based on undergraduate enrollment and estimated foregone tuition revenue.
- Systemwide set-asides include a range of activities that are funded centrally and provided across the entire system, such as attorney general services, enterprise information technology, PALS library services, and debt service.
- State appropriation for the system office (\$33.1 million) and the Learning Network of Minnesota (\$4.1 million) are specified in state law.

Details of the state funding allocation are found in the Master Green Sheet in the supplemental packet (SP-3).

FISCAL YEAR 2015 REALLOCATION

As in past years, the fiscal year 2015 operating budget reflects on-going efforts to optimize the use of every dollar through the reallocation of resources. Prioritizing resources through the reallocation process has been an effective and necessary management strategy used by Minnesota State Colleges and Universities to balance budgets, advance priorities and respond to changes in instructional programs and services called for by industries, businesses and communities across the state.

The system's biennial budget proposal pledged \$44 million in reallocations for the 2013-2014 biennium. The system reported \$29 million in reallocation in fiscal year 2014 and over \$33 million in additional reallocations are planned for fiscal year 2015. Reallocations are being used to respond to declining enrollment and to address strategic priorities.

CONCLUSION

The fiscal year 2015 operating budget supports the strategic framework's goal of offering the highest value/most affordable higher education option in Minnesota. The undergraduate tuition freeze will be extended for a second year at both the colleges and the universities, with rates remaining at 2012-2013 academic year levels. Tuition rates at Minnesota State Colleges and Universities will remain the lowest in the state of Minnesota. Increases to the state grant program and the Pell grant will further lower the cost of education for students receiving those grant awards.

Increased state funding will offset tuition revenue foregone as a result of the tuition freeze, help fund compensation increases for faculty and staff, and support investment in state-of-the-art instructional equipment. However, expected declines in enrollment will result in reallocations and reductions as colleges and universities adjust to lower numbers of students.

RECOMMENDED COMMITTEE MOTION:

The Finance and Facilities Committee recommends that the Board of Trustees adopt the following motion:

- a. Adopt the annual total operating budget for fiscal year 2015 in Table 3. Pursuant to Board Policy 5.9, the Board of Trustees will be periodically provided systemwide budget updates for all funding sources on an exception reporting basis.
- b. Approve the proposed tuition structure recommendations for fiscal year 2015 as detailed in Attachments 1A through 1E.
- c. All tuition increases are effective Summer Term or Fall Term 2014 at the discretion of the president. The chancellor or his designee is authorized to approve tuition structures for new courses or programs proposed after this date, as well as any required technical adjustments, and is requested to incorporate any approvals at the time fiscal year 2016 tuition recommendations are presented to the Board of Trustees.
- d. The Board of Trustees continues the policy of market-driven tuition for closed enrollment courses, customized training, and non-credit instruction, continuing education, and contract postsecondary enrollment option programs.
- e. Approve the revenue fund and related fiscal year 2015 fees for room and board, student union, wellness and recreation facilities, and parking ramps/surface lots as detailed in Attachments 2A through 2D, including any housing fees that the campuses may charge for occupancy outside the academic year. Approve the fiscal year 2015 fees structure for room and board for colleges who either own or manage student housing as detailed in Attachment 2E. The chancellor or his designee is authorized to approve fee structures for any new revenue fund programs as well as any technical adjustments, and is requested to incorporate any approvals at the time fiscal year 2016 recommendations are presented to the Board of Trustees.

- f. Approve an exception to the maximum amounts set by Board policy 5.11 for the Student Life/Activity (\$117.36 per term) and Health Services (\$70.20 per term) fees for St. Cloud State University.

RECOMMENDED BOARD OF TRUSTEES MOTION:

- a. Adopt the annual total operating budget for fiscal year 2015 in Table 3. Pursuant to Board Policy 5.9, the Board of Trustees will be periodically provided systemwide budget updates for all funding sources on an exception reporting basis.
- b. Approve the proposed tuition structure recommendations for fiscal year 2015 as detailed in Attachments 1A through 1E.
- c. All tuition increases are effective Summer Term or Fall Term 2014 at the discretion of the president. The chancellor or his designee is authorized to approve tuition structures for new courses or programs proposed after this date, as well as any required technical adjustments, and is requested to incorporate any approvals at the time fiscal year 2016 tuition recommendations are presented to the Board of Trustees.
- d. The Board of Trustees continues the policy of market-driven tuition for closed enrollment courses, customized training, and non-credit instruction, continuing education, and contract postsecondary enrollment option programs.
- e. Approve the revenue fund and related fiscal year 2015 fees for room and board, student union, wellness and recreation facilities, and parking ramps/surface lots as detailed in Attachments 2A through 2D, including any housing fees that the campuses may charge for occupancy outside the academic year. Approve the fiscal year 2015 fees structure for room and board for colleges who either own or manage student housing as detailed in Attachment 2E. The chancellor or his designee is authorized to approve fee structures for any new revenue fund programs as well as any technical adjustments, and is requested to incorporate any approvals at the time fiscal year 2016 recommendations are presented to the Board of Trustees.
- f. Approve an exception to the maximum amounts set by board policy 5.11 for the Student Life/Activity (\$117.36 per term) and Health Services (\$70.20 per term) fees for St. Cloud State University.

Date Presented to the Board of Trustees: June 18, 2014

**Minnesota State Colleges and Universities
Resident Undergraduate (UG) Tuition Rates for FY2015**

Institution	FY2014 Tuition Rate Per Credit	FY2015 \$ Increase Per Credit	FY2015 Tuition Rate Per Credit	FY2015 Annual Change (30 credits)
-------------	---	-------------------------------------	--------------------------------------	--

STATE COLLEGES				
Alexandria Technical & Community College	160.55	0.00	160.55	0.00
Anoka-Ramsey Community College	144.96	0.00	144.96	0.00
Anoka Technical College	166.99	0.00	166.99	0.00
Central Lakes College	159.10	0.00	159.10	0.00
Century College	160.60	0.00	160.60	0.00
Dakota County Technical College	168.95	0.00	168.95	0.00
Fond du Lac Tribal & Community College	158.90	0.00	158.90	0.00
Hennepin Technical College	156.70	0.00	156.70	0.00
Inver Hills Community College	159.00	0.00	159.00	0.00
Lake Superior College	147.25	0.00	147.25	0.00
Minneapolis Community & Technical College	155.25	0.00	155.25	0.00
Minnesota State College-Southeast Technical	167.31	0.00	167.31	0.00
Minnesota State Community & Technical College	160.80	0.00	160.80	0.00
Minnesota West Community & Technical College	171.55	0.00	171.55	0.00
Normandale Community College	161.49	0.00	161.49	0.00
North Hennepin Community College	165.08	0.00	165.08	0.00
Northeast Higher Education District				
Hibbing Community College	157.62	0.00	157.62	0.00
Itasca Community College	157.62	0.00	157.62	0.00
Mesabi Range College	157.62	0.00	157.62	0.00
Rainy River Community College	157.62	0.00	157.62	0.00
Vermilion Community College	157.62	0.00	157.62	0.00
Northland Community & Technical College	165.00	0.00	165.00	0.00
Northwest Technical College (Bemidji)	173.00	0.00	173.00	0.00
Pine Technical College	153.16	0.00	153.16	0.00
Ridgewater College	161.30	0.00	161.30	0.00
Riverland Community College	164.60	0.00	164.60	0.00
Rochester Community & Technical College	164.10	0.00	164.10	0.00
Saint Paul College	161.71	0.00	161.71	0.00
St. Cloud Technical & Community College	158.91	0.00	158.91	0.00
South Central College	161.20	0.00	161.20	0.00

STATE UNIVERSITIES				
Metropolitan State University	210.97	0.00	210.97	0.00
St. Cloud State University	219.45	0.00	219.45	0.00

**Minnesota State Colleges and Universities
Resident Undergraduate (UG) Banded Tuition Rates for FY2015**

Institution	Credits	FY2014 Banded Tuition Rate	FY2015 \$ Increase	FY2015 Banded Tuition Rate	FY2015 Annual Change (30 credits)
Bemidji State University	1-11	\$249.85	\$0.00	\$249.85	
	12-18	\$3,572.50	\$0.00	\$3,572.50	\$0.00
	19+	\$3,572.50+\$249.85/credit	\$0.00	\$3,572.50+\$249.85/credit	
Minnesota State University Moorhead	1-11	\$222.43	\$0.00	\$222.43	\$0
	12-19	\$3,449.00	\$0.00	\$3,449.00	\$0.00
	20+	\$3,449+\$222.43/credit		\$3,449+\$222.43/credit	
Minnesota State University, Mankato	1-11	\$262.34	\$0.00	\$262.34	
	12-18	\$3,333.79	\$0.00	\$3,333.79	\$0.00
	19+	\$3,333.79+\$320/credit		\$3,333.79+\$320/credit	
Southwest Minnesota State University	1-11	\$226.20	\$0.00	\$226.20	
	12-18	\$3,492.90	\$0.00	\$3,492.90	\$0.00
	19+	\$3,492.90+\$226.20/credit		\$3,492.90+\$226.20/credit	
Winona State University	1-11	\$227.00	\$0.00	\$227.00	
	12-18	\$3,433.00	\$0.00	\$3,433.00	\$0.00
	19+	\$3,433+\$227/credit		\$3,433+\$227/credit	

**Minnesota State Colleges and Universities
Resident Graduate (GR) Tuition Rates for FY2015**

Institution	FY2014 Tuition Rate Per Credit	FY2015 \$ Increase Per Credit	FY2015 Tuition Rate Per Credit	FY2015 Annual Impact on a Full Time Student (20 credits)
--------------------	---	--	---	---

Masters

Bemidji State University	\$365.80	\$10.95	\$376.75	\$219.00
Metropolitan State University	\$336.33	\$10.09	\$346.42	\$201.80
Minnesota State University Moorhead	\$337.00	\$10.00	\$347.00	\$200.00
Minnesota State University, Mankato	\$355.30	\$10.65	\$365.95	\$213.00
Southwest Minnesota State University	\$359.50	\$9.00	\$368.50	\$180.00
St. Cloud State University	\$344.74	\$10.34	\$355.08	\$206.80
Winona State University	\$359.93	\$0.00	\$359.93	\$0.00

Institution/Program	FY2014 Tuition Rate Per Credit	FY2015 \$ Increase Per Credit	FY2015 Tuition Rate Per Credit	FY2015 Annual Impact on a Full Time Student (20 credits)
----------------------------	---	--	---	---

Doctoral

Metropolitan State University - Nursing (DNP)	\$832.53	\$24.98	\$857.51	\$499.60
Metropolitan State University - College of Mgmt. (DBA)	\$865.80	\$25.97	\$891.77	\$519.40
Minnesota State University, Mankato - Nursing (DNP)	\$834.50	\$25.00	\$859.50	\$500.00
Minnesota State University, Mankato - Psychology (Psy D)	\$515.80	\$15.45	\$531.25	\$309.00
Minnesota State University, Mankato - Education (CSP)	\$515.80	\$15.45	\$531.25	\$309.00
Minnesota State University, Mankato - Ed Ldrship	\$515.80	\$15.45	\$531.25	\$309.00
St. Cloud State University - Education, Administration and Leadership (St Cloud Campus)	\$540.00	\$16.20	\$556.20	\$324.00
St. Cloud State University - Education, Administration and Leadership (Maple Grove Campus)	\$618.00	\$18.54	\$636.54	\$370.80
St. Cloud State University-Education, Higher Education (St Cloud Campus)	\$540.00	\$16.20	\$556.20	\$324.00
St. Cloud State University-Education, Higher Education (Maple Grove Campus)	\$618.00	\$18.54	\$636.54	\$370.80
Winona State University - Nursing (DNP)	\$700.00	-\$30.00	\$670.00	-\$600.00

**Minnesota State Colleges and Universities
Program and Course Tuition Rates for FY2015**

Institution	Program/Course Name	FY2014 Tuition Rate Per Credit	FY2015 \$ Increase Per Credit	FY2015 Tuition Rate Per Credit
PROGRAMS:				
Alexandria Technical & Community College	Law Enforcement Skills	214.77		214.77
Alexandria Technical & Community College	Law Enforcement Skills - SCSU	225.14		225.14
Alexandria Technical & Community College	Online	199.00		199.00
Anoka-Ramsey Community College	Nursing	186.43		186.43
Anoka-Ramsey Community College	Online Media Code 03	182.77		182.77
Anoka Technical College	Judicial Reporting/Broadcast Captioning AAS	266.56		266.56
Anoka Technical College	Surgical Technologist	208.59		208.59
Anoka Technical College	LPN	187.79		187.79
Anoka Technical College	Welding	187.79		187.79
Anoka Technical College	Online	182.00		182.00
Bemidji State University	Nursing (NRSB)	274.85		274.85
Bemidji State University	Tech Studies: Off- Campus and On-Line (TADT and TADD)	264.85		264.85
Bemidji State University	Tech Studies: On Campus (TADT)	274.85		274.85
Bemidji State University	Art and Design (TADD)	274.85		274.85
Bemidji State University	Mass Communications Department (MASC)	269.85		269.85
Bemidji State University	Music (MUSC)	264.85		264.85
Bemidji State University	Biology (BIOL)	264.85		264.85
Bemidji State University	Professional Education; Upper Division (ED)	263.85		263.85
Bemidji State University	360 Center of Excellence	199.00		199.00
Bemidji State University	Extended Learning Courses (off-campus or guided self-directed)	259.85		259.85
Bemidji State University	Online/Distance Courses	279.85		279.85
Bemidji State University	MBA program - Cohort #1	NEW		530.00
Bemidji State University	Camp Nursing Certificate	NEW		431.75
Central Lakes College	Horticulture and Landscape	179.10		179.10
Central Lakes College	Child Development	164.10		164.10
Central Lakes College	Dental Assistant	204.10		204.10
Central Lakes College	Occupational Skills	169.10		169.10
Central Lakes College	Medical Assistant	184.10		184.10
Central Lakes College	AD Nursing	194.10		194.10
Central Lakes College	Nursing Assistant	184.10		184.10
Central Lakes College	Practical Nursing	189.10		189.10
Central Lakes College	Criminal Justice	169.10		169.10
Central Lakes College	Automotive Technology	179.10		179.10
Central Lakes College	Communication Art & Design	184.10		184.10
Central Lakes College	Diesel Mechanics	199.10	(5.00)	194.10
Central Lakes College	Heavy Equipment	189.10		189.10

Institution	Program/Course Name	FY2014 Tuition Rate Per Credit	FY2015 \$ Increase Per Credit	FY2015 Tuition Rate Per Credit
Central Lakes College	Machine Trades	174.10		174.10
Central Lakes College	Marine & Small Engines	179.10		179.10
Central Lakes College	Photo Imaging	179.10		179.10
Central Lakes College	Robotics	164.10		164.10
Central Lakes College	Videography	199.10		199.10
Central Lakes College	Welding	194.10		194.10
Central Lakes College	Online Courses	189.10		189.10
Central Lakes College	360 Center of Excellence	199.00		199.00
Central Lakes College	Farm Business Management	161.44		161.44
Century College	Online Courses	185.00		185.00
Century College	Nursing	194.85		194.85
Century College	Dental Assisting	184.65		184.65
Century College	Dental Hygiene	184.65		184.65
Century College	Orthotic Practitioner & Prosthetic Practitioner	184.65		184.65
Century College	Orthotic Technician & Prosthetic Technician	184.65		184.65
Dakota County Technical College	Heavy Construction Equipment Technology	173.95		173.95
Dakota County Technical College	Welding Technology	178.95		178.95
Dakota County Technical College	Medical Assisting	185.43		185.43
Dakota County Technical College	Manufacturing	182.69		182.69
Dakota County Technical College	Wood Finishing	244.90		244.90
Dakota County Technical College	Electrical Construction	175.95		175.95
Dakota County Technical College	Rail	292.69		292.69
Dakota County Technical College	Dental Assisting	188.33		188.33
Dakota County Technical College	Heavy Duty Truck Technology	173.95		173.95
Dakota County Technical College	Practical Nursing	205.98		205.98
Dakota County Technical College	Online & Hybrid courses	183.95		183.95
Hennepin Technical College	Child Dev	158.70		158.70
Hennepin Technical College	Law Enforcement Skills	231.65		231.65
Hennepin Technical College	Audio	186.70		186.70
Hennepin Technical College	Online courses	172.80		172.80
Hibbing Community College	Law Enforcement Skills: On Campus	252.51		252.51
Hibbing Community College	Law Enforcement Skills: Off Campus-Brainerd/Worthington	282.08		282.08
Hibbing Community College	Law Enforcement Skills: Off Campus-Mankato	269.57		269.57
Inver Hills Community College	Nursing	188.00		188.00
Inver Hills Community College	CNT - Lower Division	182.00		182.00
Inver Hills Community College	CNT - Upper Division	188.00		188.00
Inver Hills Community College	Education (previously charged as fee, no change in cost to student)	160.00		160.00
Inver Hills Community College	Human Services (previously charged as fee, no change in cost to student)	160.00		160.00
Inver Hills Community College	EMS	187.00		187.00

Institution	Program/Course Name	FY2014 Tuition Rate Per Credit	FY2015 \$ Increase Per Credit	FY2015 Tuition Rate Per Credit
Inver Hills Community College	Online courses	169.00		169.00
Itasca Community College	Practical Nursing	180.79		180.79
Itasca Community College	Natural Resources	157.62		157.62
Itasca Community College	All courses offered via online (excluding any courses/programs with a differential tuition rate)	182.62		182.62
Itasca Community College	Home Health Aid	180.79		180.79
Itasca Community College	Nursing Assistant	180.79		180.79

Lake Superior College	Architectural Drafting	168.05		168.05
Lake Superior College	Engineering CAD	168.05		168.05
Lake Superior College	Media Production	168.05		168.05
Lake Superior College	Building Construction	178.45		178.45
Lake Superior College	Civil Engineering Technology	178.45		178.45
Lake Superior College	Computer Information Systems	178.45		178.45
Lake Superior College	Commercial and Residential Wiring	178.45		178.45
Lake Superior College	Electronics/Industrial Controls	178.45		178.45
Lake Superior College	Truck Driving	178.45		178.45
Lake Superior College	Auto Body	188.85		188.85
Lake Superior College	Auto Service	188.85		188.85
Lake Superior College	Integrated Manufacturing	188.85		188.85
Lake Superior College	Machine Tool	188.85		188.85
Lake Superior College	Welding	188.85		188.85
Lake Superior College	Fire Technology	188.85		188.85
Lake Superior College	Massage Therapy (FY14 charges included course fee, no change in cost to student in FY15)	202.15		202.15
Lake Superior College	Nursing (NURS) (FY14 charges included course fee, no change in cost to student in FY15)	229.60		229.60
Lake Superior College	Physical Therapy Assistant (FY14 charges included course fee, no change in cost to student in FY15)	198.80		198.80
Lake Superior College	Practical Nursing (NUPN) (FY14 charges included course fee, no change in cost to student in FY15)	219.25		219.25
Lake Superior College	PN Mobility	214.85		214.85
Lake Superior College	Respiratory Care Practitioner (FY14 charges included course fee, no change in cost to student in FY15)	199.65		199.65
Lake Superior College	Dental Hygiene (FY14 charges included course fee, no change in cost to student in FY15)	208.35		208.35
Lake Superior College	Medical Assistant	194.05		194.05
Lake Superior College	Medical Laboratory Technician	194.05		194.05
Lake Superior College	Diagnostic Medical Sonography	209.65		209.65

Institution	Program/Course Name	FY2014 Tuition Rate Per Credit	FY2015 \$ Increase Per Credit	FY2015 Tuition Rate Per Credit
Lake Superior College	Radiological Technician (FY14 charges included course fee, no change in cost to student in FY15)	202.55		202.55
Lake Superior College	Nursing Assistant 1420 (FY14 charges included course fee, no change in cost to student in FY15)	221.15		221.15
Lake Superior College	Surgical Technician (FY14 charges included course fee, no change in cost to student in FY15)	203.75		203.75
Lake Superior College	All Online courses	184.07		184.07
Lake Superior College	360 Center of Excellence courses	199.00		199.00
Lake Superior College	ART1138 (FY14 charges included course fee, no change in cost to student in FY15)	167.25		167.25
Lake Superior College	ART1305 (FY14 charges included course fee, no change in cost to student in FY15)	167.25		167.25
Lake Superior College	ART2100 (FY14 charges included course fee, no change in cost to student in FY15)	167.25		167.25
Lake Superior College	ART2139 (FY14 charges included course fee, no change in cost to student in FY15)	167.25		167.25
Lake Superior College	ART2140 (FY14 charges included course fee, no change in cost to student in FY15)	167.25		167.25
Lake Superior College	PTA2780 (FY14 charges included course fee, no change in cost to student in FY15)	164.75		164.75
Metropolitan State University	Law Enforcement Skills (Applies to Summer 2014)	416.64		416.64
Metropolitan State University	BSN Nursing program	275.82		275.82
Metropolitan State University	MSN Nursing program	436.25	13.09	449.34
Metropolitan State University	Online - Graduate	442.35	13.27	455.62
Metropolitan State University	Online - Undergraduate	281.63		281.63
Metropolitan State University	Wound, Ostomy, Continence MSN specialty track	577.60		577.60
Metropolitan State University	BS Dental Hygiene	275.82		275.82
Metropolitan State University	Oral Health Care Practitioner	436.25	13.09	449.34
Mesabi Range College	IMT Millwright - diploma	162.41		162.41
Mesabi Range College	IMT Millwright - AAS	162.41		162.41
Mesabi Range College	Welding (AWS Certification)	167.33		167.33
Mesabi Range College	Certified Nursing Assistant (off-campus)	205.95		205.95
Mesabi Range College	Graphic Arts	166.17		166.17
Mesabi Range College	Paramedic	170.06		170.06

Institution	Program/Course Name	FY2014 Tuition Rate Per Credit	FY2015 \$ Increase Per Credit	FY2015 Tuition Rate Per Credit
Mesabi Range College	All resident courses offered via online (excluding any courses/programs with a differential tuition rate)	182.62		182.62
Mesabi Range College	Welding (off campus)	200.00		200.00
Mesabi Range College	IMT Millwright (off campus)	200.00		200.00

Minneapolis Community & Technical College	Weekend courses (regular)	116.45		116.45
Minneapolis Community & Technical College	Online Courses	179.60		179.60
Minneapolis Community & Technical College	Screen Writing	230.35		230.35
Minneapolis Community & Technical College	Screen Writing - weekend	172.80		172.80
Minneapolis Community & Technical College	Nursing	188.35		188.35
Minneapolis Community & Technical College	Nursing - weekend	141.30		141.30
Minneapolis Community & Technical College	Film and Video	230.35		230.35
Minneapolis Community & Technical College	Film and Video - weekend	172.80		172.80
Minneapolis Community & Technical College	Sound Arts	230.35		230.35
Minneapolis Community & Technical College	Sound Arts - weekend	172.80		172.80
Minneapolis Community & Technical College	Air Traffic Control	230.35		230.35
Minneapolis Community & Technical College	Air Traffic Control - weekend	172.80		172.80
Minneapolis Community & Technical College	360 Center of Excellence	199.00		199.00

Minnesota State College-Southeast Technical	Truck Driving (TRDR)	207.31		207.31
Minnesota State College-Southeast Technical	Welding Technologies (WELD)	197.31		197.31
Minnesota State College-Southeast Technical	Machine Tool & Die (MTDM)	177.31		177.31
Minnesota State College-Southeast Technical	Auto Body Collision Technology (ABCT)	177.31		177.31
Minnesota State College-Southeast Technical	Automotive Technology (AUTO)	177.31		177.31
Minnesota State College-Southeast Technical	Heating,ventilation,Air Conditioning & refrigeration(HVAC)	177.31		177.31
Minnesota State College-Southeast Technical	Electronics Technology (ELEC)	177.31		177.31
Minnesota State College-Southeast Technical	Practical Nursing (HEAL)	187.31		187.31
Minnesota State College-Southeast Technical	Nurse Mobility (NURS)	187.31		187.31
Minnesota State College-Southeast Technical	Online Tuition	192.31		192.31
Minnesota State College-Southeast Technical	Musical String Instrument Repair (MSIR)	187.31		187.31
Minnesota State College-Southeast Technical	Band Instrument Repair (BIRT)	187.31		187.31

Minnesota State Community & Technical College	Electrical Lineworker	190.80		190.80
Minnesota State Community & Technical College	Dental Assisting	199.75		199.75
Minnesota State Community & Technical College	Radiology Technician	190.80		190.80
Minnesota State Community & Technical College	Nursing RN	199.75		199.75
Minnesota State Community & Technical College	Nursing LPN	199.75		199.75
Minnesota State Community & Technical College	Nursing Assistant	170.80		170.80
Minnesota State Community & Technical College	Online Programs	199.00		199.00
Minnesota State Community & Technical College	Dental Hygiene	199.75		199.75

Minnesota State University, Mankato	On Campus MBA Program	555.30		555.30
Minnesota State University, Mankato	On Campus Masters of Accounting (MACC) Program	555.30		555.30
Minnesota State University, Mankato	Twin Cities MBA Program	687.30		687.30

Institution	Program/Course Name	FY2014 Tuition Rate Per Credit	FY2015 \$ Increase Per Credit	FY2015 Tuition Rate Per Credit
Minnesota State University, Mankato	Twin Cities Masters of Accounting (MACC) Program	687.30		687.30
Minnesota State University, Mankato	Professional Science Masters (PSM) - Info Security & Risk Mgmt	NEW		565.95
Minnesota State University, Mankato	On Campus Professional Science Masters (PSM) - Engineering Mgmt	NEW		565.95
Minnesota State University, Mankato	Twin Cities Professional Science Masters (PSM) - Engineering Mgmt	NEW		615.95
Minnesota State University, Mankato	On Campus Professional Science Masters (PSM) - Geographic Information Science	NEW		565.95
Minnesota State University, Mankato	Twin Cities Professional Science Masters (PSM) - Geographic Information Science	NEW		615.95
Minnesota State University, Mankato	Twin Cities MPA Program	414.90		414.90
Minnesota State University, Mankato	Twin Cities undergraduate courses (resident)	272.25		272.25
Minnesota State University, Mankato	Twin Cities Graduate courses (resident)	405.30		405.30
Minnesota State University, Mankato	Masters of Social Work (MSW)	405.30		405.30
Minnesota State University, Mankato	Master in Science in Teaching & Learning (For Professional Development contract only)	200.00		200.00
Minnesota State University, Mankato	Graduate Teacher Licensure	405.30		405.30
Minnesota State University Moorhead	Animation (all ANIM courses rubric that were formerly GCOM)	252.43	(15.00)	237.43
Minnesota State University Moorhead	Athletic Training (all AT rubric courses except 120, 210, 420, 460)	247.43		247.43
Minnesota State University Moorhead	Chemistry (all CHEM rubric courses except 102, 105, 304)	237.43		237.43
Minnesota State University Moorhead	Construction Management (all CM rubric courses)	228.43		228.43
Minnesota State University Moorhead	Counseling & Student Affairs (master's)	400.00	10.00	410.00
Minnesota State University Moorhead	Graphic Communications (all GCOM courses rubric except 150, 152, 452, 469)	252.43		252.43
Minnesota State University Moorhead	Healthcare Administration (master's)	337.00	23.00	360.00
Minnesota State University Moorhead	Mass Communications (all MC rubric courses)	229.93		229.93
Minnesota State University Moorhead	Nursing (master's)	420.00	10.00	430.00
Minnesota State University Moorhead	Operations Management (all OM rubric courses)	228.43		228.43
Minnesota State University Moorhead	Online/Distance Courses (on-line, package, ITV, & off-campus)	277.43		277.43
Minnesota State University Moorhead	Physical Education (all PE rubric courses)	227.43		227.43
Minnesota State University Moorhead	Project Management (all PMGT rubric courses)	228.43		228.43

Institution	Program/Course Name	FY2014 Tuition Rate Per Credit	FY2015 \$ Increase Per Credit	FY2015 Tuition Rate Per Credit
Minnesota State University Moorhead	School of Business (master's)	350.00	10.00	360.00
Minnesota State University Moorhead	School Psychology (master's)	425.00	10.00	435.00
Minnesota State University Moorhead	Speech-Language Pathology (master's)	395.00	30.00	425.00
Minnesota State University Moorhead	Technology (all TECH rubric courses)	228.43		228.43
Minnesota State University Moorhead	Theatre (all THTR rubric courses except THTR 120, 360, 397, 420, 460, 497)	242.43		242.43
Minnesota State University Moorhead	Theatre (master's) (all THTR rubric master's courses except THTR 560)	357.00	10.00	367.00
Minnesota West Community & Technical College	Farm Business Management	174.05		174.05
Minnesota West Community & Technical College	Nursing	196.35		196.35
Minnesota West Community & Technical College	Rad Tech (FY14 charges included course fee, no change in cost to student in FY15)	varied		192.42
Minnesota West Community & Technical College	Surg Tech(FY14 charges included course fee, no change in cost to student in FY15)	varied		192.22
Normandale Community College	Global Career Development Facilitator Program	172.19		172.19
Normandale Community College	Online tuition rate	181.49		181.49
North Hennepin Community College	Nursing	189.78		189.78
North Hennepin Community College	Online Courses	177.96		177.96
Northland Community & Technical College	Cardiovascular Tech	190.00		190.00
Northland Community & Technical College	Commercial Vehicle Operations	289.12		289.12
Northland Community & Technical College	Fire Technology	190.00		190.00
Northland Community & Technical College	Fire Fighter-Paramedic	190.00		190.00
Northland Community & Technical College	Occupational Therapy Assistant	190.00		190.00
Northland Community & Technical College	Nursing Assistant (course HLTH 1110)	190.00		190.00
Northland Community & Technical College	Paramedicine	190.00		190.00
Northland Community & Technical College	Pharmacy Technology	190.00		190.00
Northland Community & Technical College	Physical Therapist Assistant	190.00		190.00
Northland Community & Technical College	Practical Nursing	190.00		190.00
Northland Community & Technical College	Radiologic Technology	190.00		190.00
Northland Community & Technical College	Registered Nurse	190.00		190.00
Northland Community & Technical College	Respiratory Therapist	190.00		190.00
Northland Community & Technical College	Surgical Technology	190.00		190.00
Northland Community & Technical College	Phlebotomy	190.00		190.00
Northland Community & Technical College	EMT Basic	190.00		190.00
Northland Community & Technical College	Distance/Online Courses	199.00		199.00
Northland Community & Technical College	360 Center of Excellence	199.00		199.00
Northland Community & Technical College	Farm Business Management	167.30		167.30
Northland Community & Technical College	UAS	300.00		300.00
Northland Community & Technical College	Imagery Analyst - grant funded program	NEW		300.00

Institution	Program/Course Name	FY2014 Tuition Rate Per Credit	FY2015 \$ Increase Per Credit	FY2015 Tuition Rate Per Credit
Northland Community & Technical College	GINT-Geospatial Intelligence	NEW		300.00
Northland Community & Technical College	Aviation	198.04		198.04
Northwest Technical College (Bemidji)	Auto Machinist	203.00		203.00
Northwest Technical College (Bemidji)	Automotive Service Technology	185.00		185.00
Northwest Technical College (Bemidji)	Nursing	185.00		185.00
Northwest Technical College (Bemidji)	Dental Assistant	185.00		185.00
Northwest Technical College (Bemidji)	HVAC Residential Plumbing	185.00		185.00
Northwest Technical College (Bemidji)	Construction Electricity	185.00		185.00
Northwest Technical College (Bemidji)	Massage Therapy	190.25		190.25
Northwest Technical College (Bemidji)	360 Center of Excellence	199.00		199.00
Northwest Technical College (Bemidji)	Distance/On-line courses	199.00		199.00
Pine Technical College	Gunsmithing (GTSP)	163.16		163.16
Pine Technical College	Manufacturing (MTTP)	158.16		158.16
Pine Technical College	Robotics (ETEC)	NEW		158.16
Pine Technical College	Plastics (PLST)	NEW		158.16
Pine Technical College	Nursing (HEOP, PRSG, NURS, HPPC)	189.91		189.91
Pine Technical College	360 Center of Excellence Consortium Courses	199.00		199.00
Pine Technical College	Early Childhood Development (CDEV)	155.16		155.16
Rainy River Community College	Industrial Technology	180.79		180.79
Rainy River Community College	Online courses (excluding any courses/programs with a differential tuition rate)	182.62		182.62
Ridgewater College	Online tuition	185.00		185.00
Riverland Community College	Truck Driving	264.60		264.60
Riverland Community College	Farm Business Management	167.10		167.10
Riverland Community College	Independent Studies	239.60		239.60
Riverland Community College	A.D. Nursing	199.60		199.60
Riverland Community College	Online Courses	194.60		194.60
Riverland Community College	Cisco Network Associate Program	189.60		189.60
Riverland Community College	Microsoft Systems Administrator	189.60		189.60
Riverland Community College	Microsoft Systems Engineer	189.60		189.60
Riverland Community College	Multimedia	189.60		189.60
Riverland Community College	Web Page Design	189.60		189.60
Riverland Community College	Webmaster	189.60		189.60
Riverland Community College	Chemistry	167.73		167.73
Riverland Community College	Business Administration	167.10		167.10
Riverland Community College	Business & Office/Administrative Support	167.10		167.10
Riverland Community College	Accounting	167.10		167.10
Riverland Community College	Automobile Services	174.60		174.60
Riverland Community College	Construction Electrician	174.60		174.60
Riverland Community College	Wind Energy	174.60		174.60

Institution	Program/Course Name	FY2014 Tuition Rate Per Credit	FY2015 \$ Increase Per Credit	FY2015 Tuition Rate Per Credit
Riverland Community College	Diesel	174.60		174.60
Riverland Community College	Industrial Machining	174.60		174.60
Riverland Community College	Collision Repair	174.60		174.60
Riverland Community College	Cosmetology	184.60		184.60
Riverland Community College	Massage Therapy	184.60		184.60
Riverland Community College	360 Center of Excellence	199.00		199.00
Riverland Community College	Radiography AAS	194.60		194.60
Ridgewater College	Online tuition	185.00		185.00
Rochester Community and Technical College	Online tuition differential - media codes 03, 12, 13	194.10		194.10
Rochester Community and Technical College	Hybrid Tuition differential - media code 09	179.10		179.10
Rochester Community and Technical College	Automobile Mechanics (AMT)	179.10		179.10
Rochester Community and Technical College	Computer Aided Drafting	184.10		184.10
Rochester Community and Technical College	Nursing AD (FY13 charges included course fee, no change in cost to student in FY14)	179.10		179.10
Rochester Community and Technical College	PNM (FY13 charges included course fee, no change in cost to student in FY14)	179.10		179.10
Rochester Community and Technical College	Equine Science (EQSC)	226.10		226.10
Rochester Community and Technical College	LAWE - Law enforcement (FY13 charges included course fee, no change in cost to student in FY14)	184.10		184.10
Rochester Community and Technical College	LAWE - Law enforcement Skills	289.10		289.10
Rochester Community and Technical College	Veterinary Assistant/Technician	174.10		174.10
Rochester Community and Technical College	Dental Hygiene	181.90		181.90
Rochester Community and Technical College	Dental Assisting	176.90		176.90
Rochester Community and Technical College	Nursing Assistant	174.90		174.90
Rochester Community and Technical College	Emergency Medical Technician (FY13 charges included course fee, no change in cost to student in FY14)	167.10		167.10
Rochester Community and Technical College	Health Unit Coordinator (FY13 charges included course fee, no change in cost to student in FY14)	167.10		167.10
Rochester Community and Technical College	Human Services Technician (FY13 charges included course fee, no change in cost to student in FY14)	167.10	(3.00)	164.10
Rochester Community and Technical College	Child Development Assistant (FY13 charges included course fee, no change in cost to student in FY14)	167.10		167.10
Rochester Community and Technical College	Design and Visual Communications, Gen (FY13 charges included course fee, no change in cost to student in FY14)	169.10		169.10
Rochester Community and Technical College	Film/Video and Photographic Arts (FY13 charges included course fee, no change in cost to student in FY14)	199.10		199.10

Institution	Program/Course Name	FY2014 Tuition Rate Per Credit	FY2015 \$ Increase Per Credit	FY2015 Tuition Rate Per Credit
Rochester Community and Technical College	Fine and Studio Art (FY13 charges included course fee, no change in cost to student in FY14)	179.10		179.10
Rochester Community and Technical College	Welding	174.10		174.10
Saint Paul College	360° Manufacturing and Applied Engineering Center of Excellence	199.00		199.00
Saint Paul College	Online Tuition (Media Code 03 and 12)	181.71		181.71
Saint Paul College	Pharmacy Tech	181.54		181.54
Saint Paul College	Phlebotomy	218.03		218.03
Saint Paul College	Pilates	197.44		197.44
Saint Paul College	Pre-Engineering	175.90		175.90
Saint Paul College	Respiratory Therapy	211.71		211.71
South Central College	FBM	163.60		163.60
Southwest Minnesota State University	Hospitality/Culinology Labs	252.45		252.45
Southwest Minnesota State University	Science Labs includes labs in Agronomy, Biology, Chemistry, Physics, Exercise Science and Environmental Science	241.95		241.95
Southwest Minnesota State University	Studio Art	241.95		241.95
Southwest Minnesota State University	Intro to Art/Elementary Art	233.55		233.55
Southwest Minnesota State University	ESL Licensure (Education undergraduate)	231.20		231.20
Southwest Minnesota State University	ESL Licensure (Education graduate)	356.50		356.50
Southwest Minnesota State University	Off Camp Grad Ed Learning Communities 15/16	370.00	10.00	380.00
Southwest Minnesota State University	Off Camp Grad Ed Learning Comm. 14/15	370.00		370.00
Southwest Minnesota State University	Off camp Grad Education (program tuition/semester)	100.00		100.00
Southwest Minnesota State University	Off Campus Education Graduate Program	410.00		410.00
Southwest Minnesota State University	Off Campus MBA & Management Graduate Program	410.00		410.00
Southwest Minnesota State University	Undergraduate Off Campus Programs	274.00		274.00
Southwest Minnesota State University	Undergraduate Online/Web courses	274.00		274.00
Southwest Minnesota State University	Graduate online/web courses	410.00		410.00
				0.00
St. Cloud State University	Twin Cities Graduate Center MBA	772.50	23.18	795.68
St. Cloud State University	St. Cloud MBA	551.05	16.53	567.58
St. Cloud State University	Undergraduate Nursing	246.60		246.60
St. Cloud State University	Master of Engineering Management	592.25	17.77	610.02
St. Cloud State University	Master of Regulatory Affairs and Services	772.50	23.18	795.68
St. Cloud State University	Master of Applied Clinical Research	772.50	23.18	795.68
St. Cloud State University	Master of Science, Medical Technology Quality (MTG)	772.50	23.18	795.68

Institution	Program/Course Name	FY2014 Tuition Rate Per Credit	FY2015 \$ Increase Per Credit	FY2015 Tuition Rate Per Credit
St. Cloud State University	Off Campus or on-line Behavioral Analysis	515.52	15.47	530.99
St. Cloud State University	Off Campus North Branch Cohort Undergraduate	259.60		259.60
St. Cloud State University	Off Campus North Branch Cohort Graduate	393.46	11.80	405.26
St. Cloud State University	Off Campus Workshop Undergraduate	259.60	7.79	267.39
St. Cloud State University	Off Campus Workshop Graduate	393.46	11.80	405.26
St. Cloud State University	Correctional Facility Undergraduate Education	219.45		219.45
St. Cloud State University	Off Campus Undergraduate	259.60		259.60
St. Cloud State University	Off Campus Graduate	393.46	11.80	405.26
St. Cloud State University	Off Campus Undergraduate Continuing Education	294.01		294.01
St. Cloud State University	Off Campus Graduate Continuing Education	412.00	12.36	424.36
St. Cloud State University	Off Campus Undergraduate ITV Continuing Education	294.01		294.01
St. Cloud State University	Off Campus Graduate ITV Continuing Education	412.00	12.36	424.36
St. Cloud State University	On-Line Department or Continuing Studies Undergraduate	312.40		312.40
St. Cloud State University	On-Line Department or Continuing Studies Graduate	428.74	12.86	441.60
St. Cloud State University	Masters Information Assurance	587.49	17.62	605.11
St. Cloud State University	Art	247.95	7.44	255.39
St. Cloud State University	Mass Communication	244.45	7.33	251.78

St. Cloud Technical & Community College	Dental Hygiene	183.86		183.86
St. Cloud Technical & Community College	Dental Assisting	183.86		183.86
St. Cloud Technical & Community College	Invasive Cardiovascular Technology	183.86		183.86
St. Cloud Technical & Community College	Sonography	183.86		183.86
St. Cloud Technical & Community College	Paramedicine	183.86		183.86
St. Cloud Technical & Community College	Associate Degree of Nursing	212.18		212.18
St. Cloud Technical & Community College	Surgical Technology	183.86		183.86
St. Cloud Technical & Community College	LPN	183.86		183.86
St. Cloud Technical & Community College	360 Center of Excellence	199.00		199.00
St. Cloud Technical & Community College	Online Courses with Media Code 03, 12, or 13	192.86		192.86

Winona State University	International Institutes	450.00		450.00
Winona State University	Math Sciences Teaching Academy-Graduate	125.00		125.00
Winona State University	Early Childhood Special Education (Rochester)-Graduate	375.00		375.00
Winona State University	Study Abroad Program	450.00		450.00
Winona State University	Travel Studies Program	400.00		400.00
Winona State University	Criminal Justice - Rochester Campus	250.00		250.00

Institution	Program/Course Name	FY2014 Tuition Rate Per Credit	FY2015 \$ Increase Per Credit	FY2015 Tuition Rate Per Credit
Winona State University	Teacher Preparation Collaborative Certificate-Graduate	400.00		400.00
Winona State University	Professional Development for Educators - Graduate	175.00		175.00
Winona State University	Undergraduate Nursing Program	262.00		262.00
Winona State University	Graduate Nursing Program	530.48		530.48
Winona State University	Advanced Nursing Practice Specialty Cohorts	900.00		900.00
Winona State University	Health Leadership & Administration Program-HLA	293.34		293.34

Institution	Program/Course Name	FY2014 Tuition Rate Per Credit	FY2015 \$ Increase Per Credit	FY2015 Tuition Rate Per Credit
COURSES:				
Alexandria Technical & Community College	Psychiatric Clinical	187.26		187.26
Alexandria Technical & Community College	Medical Clinical	187.26		187.26
Alexandria Technical & Community College	Surgical Clinical	187.26		187.26
Alexandria Technical & Community College	OB/Peds Clinical	187.26		187.26
Alexandria Technical & Community College	Comprehensive Clinical I	187.26		187.26
Alexandria Technical & Community College	Comprehensive Clinical II	187.26		187.26
Alexandria Technical & Community College	Child Care Internship	160.55		160.55
Alexandria Technical & Community College	Child Care Practicum I	160.55		160.55
Alexandria Technical & Community College	Child Care Practicum II	160.55		160.55
Alexandria Technical & Community College	Turning II	187.26		187.26
Alexandria Technical & Community College	Milling II	187.26		187.26
Alexandria Technical & Community College	CNC Machining Operations I	187.26		187.26
Alexandria Technical & Community College	CNC Machining Operations II	187.26		187.26
Alexandria Technical & Community College	Operation of Commercial Vehicle	287.08		287.08
Alexandria Technical & Community College	Firearms/Officer Survival Tactics	248.05		248.05
Bemidji State University	Chem -General Chemistry I &II (CHEM 1111/1112)	254.85		254.85
Bemidji State University	Chem - Principles of Chemistry I & II (CHEM 2211/2212)	254.85		254.85
Bemidji State University	Chem - Organic Chemistry I & II (CHEM 3371/3372)	269.85		269.85
Bemidji State University	Chem - Allied Health Lab (CHEM 1110)	259.85		259.85
Bemidji State University	Chem - Analytical Chem Lab	269.85		269.85
Bemidji State University	Chem - Biochemistry Lab I & II (CHEM 4471/4472/5471/5472)	264.85		264.85
Bemidji State University	Chem - Physical Chemistry Lab I & II (CHEM 4771/4772/5771/5772)	264.85		264.85
Bemidji State University	Chem - Inorganic Chem Lab I (CHEM 3871)	264.85		264.85
Bemidji State University	Chem - Instrmtl Analys Lab I (CHEM 4571)	264.85		264.85
Bemidji State University	PE -Athletic Training (PHED 3190/5190)	259.85		259.85
Bemidji State University	PE - Personal Training: Strength and Speed (PHED 4160/5160)	259.85		259.85
Bemidji State University	PE - Exercise Physiology & Nutrition (PHED 3300/5300)	259.85		259.85
Bemidji State University	Physics - Lab (PHYS 1101/1102/2101/2102)	254.85		254.85
Bemidji State University	Geology - Labs (GEOL 1110/1120/2110 /3120/3212/3500/3600/5120/5212/5500/5600)	254.85		254.85
Bemidji State University	Environmental -Thesis (ENVR 4990/6990)	370.50	21.25	391.75
Central Lakes College	BIOL 1404 - Human Biology	169.10		169.10

Institution	Program/Course Name	FY2014 Tuition Rate Per Credit	FY2015 \$ Increase Per Credit	FY2015 Tuition Rate Per Credit
Central Lakes College	BIOL 1411 - Concepts of Biology	169.10		169.10
Central Lakes College	BIOL 1415 - Environmental Biology	169.10		169.10
Central Lakes College	BIOL 1431 - General Biology I	169.10		169.10
Central Lakes College	BIOL 1432 - General Biology II	169.10		169.10
Central Lakes College	BIOL 2411 - Biology of Women	169.10		169.10
Central Lakes College	BIOL 2417 - General Ecology Lab	169.10		169.10
Central Lakes College	BIOL 2457 - Microbiology	169.10		169.10
Central Lakes College	BIOL 2467 - Anatomy & Physiology I	169.10		169.10
Central Lakes College	BIOL 2468 - Anatomy & Physiology II	169.10		169.10
Central Lakes College	CHEM 1405 - Life Science Chemistry	169.10		169.10
Central Lakes College	CHEM 1424 - Chemical Principles I	169.10		169.10
Central Lakes College	CHEM 1425 - Chemical Principles II	169.10		169.10
Central Lakes College	CHEM 2472 - Organic Chemistry I	169.10		169.10
Central Lakes College	CHEM 2473 - Organic Chemistry II	169.10		169.10
Central Lakes College	CRJU 2160-Use of Force	270.78		270.78
Central Lakes College	CRJU 2162-Firearms	270.78		270.78
Central Lakes College	CRJU 2164-Patrol Practicals	270.78		270.78
Central Lakes College	CRJU 2166-Tactical Communications/Relations	270.78		270.78
Central Lakes College	CRJU 2124-General Evidence and Identification Preparation	270.78		270.78
Central Lakes College	ESCI 1405 - Astronomy	169.10		169.10
Central Lakes College	ESCI 1452 - Oceanography Lab	169.10		169.10
Central Lakes College	ESCI 1454 - Earth Science and the Environment	169.10		169.10
Central Lakes College	EMTS 1502 - Emergency Medical Technician	224.10		224.10
Central Lakes College	EMTS 1580 - Special Topics (ACLS)	274.10		274.10
Central Lakes College	PHED 1510 - Skiing/Snowboarding	229.10		229.10
Central Lakes College	PHED 1511 - Adv. Skiing/Snowboarding	229.10		229.10
Central Lakes College	PHED 1525 - Personal Protection Awareness	174.10		174.10
Central Lakes College	PHED 1534 - Beginning Golf	174.10		174.10
Central Lakes College	PHED 1541 - Bowling	204.10		204.10
Central Lakes College	AMSL 1412 - American Sign Language II	174.10		174.10
Central Lakes College	AMSL 2412 - American Sign Language IV	174.10		174.10
Central Lakes College	AMSL 2414 - Conversational ASL	234.10		234.10
Central Lakes College	ARTS 1401 Black & White Photo I	169.10		169.10
Central Lakes College	ARTS 1403 Color Photo I	169.10		169.10
Central Lakes College	ARTS 1596 Topics In Art	169.10		169.10
Fond du Lac Tribal & Community College	Digital Photography	163.90		163.90
Fond du Lac Tribal & Community College	Introduction to Art	163.90		163.90
Fond du Lac Tribal & Community College	Painting	163.90		163.90
Fond du Lac Tribal & Community College	Ceramics	163.90		163.90
Fond du Lac Tribal & Community College	Drawing	163.90		163.90
Fond du Lac Tribal & Community College	Art Design	163.90		163.90

Institution	Program/Course Name	FY2014 Tuition Rate Per Credit	FY2015 \$ Increase Per Credit	FY2015 Tuition Rate Per Credit
Fond du Lac Tribal & Community College	Watercolors	163.90		163.90
Fond du Lac Tribal & Community College	Sculptures	163.90		163.90
Fond du Lac Tribal & Community College	Microbiology Lab/Lecture	163.90		163.90
Fond du Lac Tribal & Community College	Human Anatomy and Physiology Lab/Lecture	163.90		163.90
Fond du Lac Tribal & Community College	Aspects of Biology Lab/Lecture	163.90		163.90
Fond du Lac Tribal & Community College	Environmental Science Lab/Lecture	163.90		163.90
Fond du Lac Tribal & Community College	General Biology Lab/Lecture	163.90		163.90
Fond du Lac Tribal & Community College	Intro to Forensic Biology	163.90		163.90
Fond du Lac Tribal & Community College	Principals of Ecology Lab/Lecture	163.90		163.90
Fond du Lac Tribal & Community College	Aspects of Inorganic Chemistry Lab/Lecture	178.94		178.94
Fond du Lac Tribal & Community College	General Chemistry Lab/Lecture	178.94		178.94
Fond du Lac Tribal & Community College	Organic Chemistry Lab/Lecture	178.94		178.94
Fond du Lac Tribal & Community College	Leadership, Ethics, Y Diversity in Law Enforcement	204.50		204.50
Fond du Lac Tribal & Community College	Practical Applications of Criminal Investigations	199.50		199.50
Fond du Lac Tribal & Community College	Patrol Procedures	240.50		240.50
Fond du Lac Tribal & Community College	Careers in the Criminal Justice System	182.00		182.00
Fond du Lac Tribal & Community College	Use of Force I: Basic Defense Tactics	224.00		224.00
Fond du Lac Tribal & Community College	Use of Force II: Firearms	385.00		385.00
Fond du Lac Tribal & Community College	Beginning Bowling	204.94		204.94
Fond du Lac Tribal & Community College	Advanced Bowling	204.94		204.94
Fond du Lac Tribal & Community College	Summer Outdoor Activities	280.00		280.00
Fond du Lac Tribal & Community College	Winter Outdoor Activities	280.00		280.00
Fond du Lac Tribal & Community College	Beginning Golf	255.44		255.44
Fond du Lac Tribal & Community College	NURS and HLTH Courses (except lab and clinical)	177.00		177.00
Fond du Lac Tribal & Community College	Intro to Nursing	233.00		233.00
Fond du Lac Tribal & Community College	Home Health Aid	233.00		233.00
Fond du Lac Tribal & Community College	Personal, Tribal & Comm Health	177.00		177.00
Fond du Lac Tribal & Community College	emergency Medical Technician	233.00		233.00
Fond du Lac Tribal & Community College	Community CPR	233.00		233.00
Fond du Lac Tribal & Community College	Emergency Response/First Responder	233.00		233.00
Fond du Lac Tribal & Community College	Special Topics	177.00		177.00
Fond du Lac Tribal & Community College	Food: Safety, Risks & Technology	177.00		177.00
Fond du Lac Tribal & Community College	Foundations of Nursing	177.00		177.00
Fond du Lac Tribal & Community College	Clinical Foundations	233.00		233.00
Fond du Lac Tribal & Community College	Application of Nursing	177.00		177.00
Fond du Lac Tribal & Community College	Family Nursing	177.00		177.00
Fond du Lac Tribal & Community College	Family Nursing Clinical	233.00		233.00
Fond du Lac Tribal & Community College	Ethics in Nursing	177.00		177.00
Fond du Lac Tribal & Community College	Mathematics for Medication	177.00		177.00
Fond du Lac Tribal & Community College	Psychosocial Nursing	177.00		177.00
Fond du Lac Tribal & Community College	Medication Admin I	177.00		177.00
Fond du Lac Tribal & Community College	Medication Admin II	177.00		177.00
Fond du Lac Tribal & Community College	Nursing Interventions	233.00		233.00
Fond du Lac Tribal & Community College	Clinical Applications	233.00		233.00
Fond du Lac Tribal & Community College	Service Learning for Nursing	233.00		233.00

Institution	Program/Course Name	FY2014 Tuition Rate Per Credit	FY2015 \$ Increase Per Credit	FY2015 Tuition Rate Per Credit
Fond du Lac Tribal & Community College	Nursing Role Transition	177.00		177.00
Fond du Lac Tribal & Community College	Nursing Role Transition Clinical	233.00		233.00
Fond du Lac Tribal & Community College	Health Assessment	233.00		233.00
Fond du Lac Tribal & Community College	Integration of Nursing	177.00		177.00
Fond du Lac Tribal & Community College	Clinical Integration	233.00		233.00
Fond du Lac Tribal & Community College	synthesis of Nursing	177.00		177.00
Fond du Lac Tribal & Community College	Clinical Syntheses	233.00		233.00
Fond du Lac Tribal & Community College	Native Plant Identification	163.90		163.90
Fond du Lac Tribal & Community College	All Private Music Lessons	280.50		280.50
Fond du Lac Tribal & Community College	Beginning Downhill Skiing	250.44		250.44
Fond du Lac Tribal & Community College	HLTH 1032 Health Care Provider CPR & 1st Aid	233.00		233.00
Fond du Lac Tribal & Community College	On-Line Courses	178.90		178.90
Hennepin Technical College	Emergency Vehicle Driving Skills (EMSV 1130)	266.70		266.70
Hennepin Technical College	Emergency Medical Technician - Basic (EMSV 1100)	170.70		170.70
Hennepin Technical College	Health Clinical: Clinical Externship I & II (DNTH 1321 & DNTH 1325)	166.70		166.70
Hennepin Technical College	Health Clinicals: Health Unit Coordinator Internship (HLUC 1200)	166.70		166.70
Hennepin Technical College	Health Clinicals: Practicum (MAST 2040)	166.70		166.70
Hennepin Technical College	Health Clinicals: Nursing Assistant (NURS 1001)	166.70		166.70
Hennepin Technical College	Health Clinicals: Pharmacy Technician Externship I & II (PHRM 1080 & PHRM 1090)	166.70		166.70
Hennepin Technical College	Nursing: Foundations I & II (NURS 1103 & NURS 1201)	176.70		176.70
Hennepin Technical College	Nursing: Pharmacology for Practical Nurses (NURS 1141)	176.70		176.70
Hennepin Technical College	Nursing: Nursing Skills I & II (NURS 1161 & NURS 1261)	176.70		176.70
Hennepin Technical College	Nursing: Adult Nursing I & II (NURS 1191 & NURS 1222)	176.70		176.70
Hennepin Technical College	Nursing: Maternal Child Nursing (NURS 1242)	176.70		176.70
Hennepin Technical College	Nursing: Psychosocial Nursing (NURS 2110)	176.70		176.70
Hennepin Technical College	Nursing: Capstone (NURS 2550)	176.70		176.70
Hennepin Technical College	Extrusion Molding Processes I & II (PLST 2011 & PLST 2017)	166.70		166.70
Hennepin Technical College	Injection Molding Processes I, II, & III (PLST 2128, PLST 2138, & PLST 2143)	166.70		166.70
Hennepin Technical College	Public Works (PWRK 1060)	206.70		206.70
Hennepin Technical College	Related Mechanical Skills (FMLR 1301)	231.70		231.70

Institution	Program/Course Name	FY2014 Tuition Rate Per Credit	FY2015 \$ Increase Per Credit	FY2015 Tuition Rate Per Credit
Hibbing Community College	Course: Fire Arms	236.58		236.58
Hibbing Community College	Course: Basic Fire Arms	236.58		236.58
Hibbing Community College	Automotive Technician Courses	169.62		169.62
Hibbing Community College	Culinary Arts Courses	169.62		169.62
Hibbing Community College	Dental Assistant Courses	169.62		169.62
Hibbing Community College	Diesel Mechanics/Heavy Equip. Maint. Courses	169.62		169.62
Hibbing Community College	Electrical Maint. And Construction Courses	169.62		169.62
Hibbing Community College	Industrial Systems Technology Courses	169.62		169.62
Hibbing Community College	Law Enforcement Courses (Not Listed Above)	169.62		169.62
Hibbing Community College	Medical Lavoratory Technician Courses	169.62		169.62
Hibbing Community College	Microcomputer Technician Courses	169.62		169.62
Hibbing Community College	Multi Media Courses	169.62		169.62
Hibbing Community College	Nursing Courses	179.71		179.71
Hibbing Community College	Nursing Assistant/Home Health Aide Courses	169.62		169.62
Hibbing Community College	Pharmacy Technician Courses	169.62		169.62
Hibbing Community College	Professional Truck Driver (CDL) Courses	169.62		169.62
Hibbing Community College	Refrig., Heating, Air Cond. App. Repair Courses	169.62		169.62
Hibbing Community College	Solar Photovoltaic Technician Courses	169.62		169.62
Hibbing Community College	Heating and Cooling Technician (new)	169.62		169.62
Hibbing Community College	Online Tuition - Resident	182.62		182.62
Mesabi Range College	Applied Math & Medications	180.18		180.18
Mesabi Range College	Adult Nursing I & Clinical	180.18		180.18
Mesabi Range College	Applied Nursing Skills	180.18		180.18
Mesabi Range College	Maternal/Child Health & Clinical	180.18		180.18
Mesabi Range College	Adult Nursing II & Clinical	180.18		180.18
Mesabi Range College	Mental Health Concepts & Clinical	180.18		180.18
Mesabi Range College	Gerontology & Clinical	180.18		180.18
Minneapolis Community & Technical College	Barbering (1050, 1100, 1200, 1250, 1360, 1370)	158.50		158.50
Minneapolis Community & Technical College	Barbering (1460, 1470, 1500, 1510)	157.69		157.69
Minneapolis Community & Technical College	Early Childhood Education 1600	160.13		160.13
Minneapolis Community & Technical College	Early Childhood Education 2600	158.50		158.50
Minneapolis Community & Technical College	Community Health Worker 1001	165.17		165.17
Minneapolis Community & Technical College	Community Health Worker 1016	160.13		160.13
Minneapolis Community & Technical College	Counseling 2650	158.55		158.55
Minneapolis Community & Technical College	Counseling 2730	165.00		165.00
Minneapolis Community & Technical College	Counseling 2830	156.33		156.33
Minneapolis Community & Technical College	Central Service Technician 1000	165.17		165.17
Minneapolis Community & Technical College	Central Service Technician 1002	160.13		160.13
Minneapolis Community & Technical College	DNTA (1170, 1350)	158.50		158.50
Minneapolis Community & Technical College	DNTA 1274	157.69		157.69

Institution	Program/Course Name	FY2014 Tuition Rate Per Credit	FY2015 \$ Increase Per Credit	FY2015 Tuition Rate Per Credit
Minneapolis Community & Technical College	ENDT 1010	158.58		158.58
Minneapolis Community & Technical College	ENDT (1200, 2050, 2525, 2550)	157.69		157.69
Minneapolis Community & Technical College	ENDT 1850	160.13		160.13
Minneapolis Community & Technical College	ENDT 2550	170.13		170.13
Minneapolis Community & Technical College	HSER 2003	175.25		175.25
Minneapolis Community & Technical College	HSER 2004	156.88		156.88
Minneapolis Community & Technical College	NAHA (1819, 1850)	161.20		161.20
Minneapolis Community & Technical College	NAHA 1900	158.50		158.50
Minneapolis Community & Technical College	PHLE 1000	160.25		160.25
Minneapolis Community & Technical College	PHLE 1002	158.50		158.50
Minneapolis Community & Technical College	PSOM 1500	160.25		160.25
Minneapolis Community & Technical College	PSOM (1650, 2350)	158.50		158.50
Minneapolis Community & Technical College	PSOM 2150	157.69		157.69
Minneapolis Community & Technical College	PSOM 2250	157.20		157.20
Minneapolis Community & Technical College	FYST 1010	165.58		165.58
Minneapolis Community & Technical College	PHED 2100	230.25		230.25
Minnesota State College-Southeast Technical	Comp 2510 Introduction to Computers	177.31		177.31
Minnesota State College-Southeast Technical	Chem 2518 General, Organic, & Biochemistry I	177.31		177.31
Minnesota State College-Southeast Technical	BIOL 2512 Anatomy & Physiology II	177.31		177.31
Minnesota State College-Southeast Technical	BIOL 2511 Anatomy & Physiology I	177.31		177.31
Minnesota State College-Southeast Technical	COMP 2525 Computers: Issues and Applications II	177.31		177.31
Minnesota State College-Southeast Technical	COMP 2520 Introduction to Graphic Design	177.31		177.31
Minnesota State College-Southeast Technical	HUMA 2540 Introduction to Multimedia and Digital Arts	177.31		177.31
Minnesota State College-Southeast Technical	HUMA 2525 Digital Photography	177.31		177.31
Minnesota State College-Southeast Technical	HUMA 2520 Film Studies	177.31		177.31
Minnesota State College-Southeast Technical	BIOL 2501 Introduction to Biology	177.31		177.31
Minnesota State College-Southeast Technical	BIOL 2530 Microbiology	177.31		177.31
Minnesota State College-Southeast Technical	CHEM 2522 Environmental Chemistry	177.31		177.31
Minnesota State College-Southeast Technical	CHEM 2525 Introduction to Forensic Science	177.31		177.31
Minnesota State College-Southeast Technical	INDS 1628 Introduction to Welding Technologies	187.31		187.31
Minnesota State College-Southeast Technical	INDS 1629 Welding Technologies II	187.31		187.31
Minnesota State College-Southeast Technical	INDS 1630 Welding Technologies III	187.31		187.31
Minnesota State College-Southeast Technical	INDS 1632 Oxy-Fuel Welding Fundamentals	187.31		187.31
Minnesota State Community & Technical College	Online Courses	199.00		199.00
Minnesota State University, Mankato	Anthropology 486/586 (Crime Scene Recovery Workshop)	495.00		495.00
Minnesota State University, Mankato	Online Courses (Note: It is \$35.00 above the existing resident undergraduate or graduate tuition rates)	35.00		35.00

Institution	Program/Course Name	FY2014 Tuition Rate Per Credit	FY2015 \$ Increase Per Credit	FY2015 Tuition Rate Per Credit
Minnesota State University Moorhead	ART 101, 102, 210, 451C, 452C, 452H, 452L, 480, 494C	227.43		227.43
Minnesota State University Moorhead	ART 125, 310	237.43	(10.00)	227.43
Minnesota State University Moorhead	ART 203A, 300A, 303A, 304A, 305A, 400A, 404A, 405A, 451A, 452A	257.43		257.43
Minnesota State University Moorhead	ART 203C, 303C, 304C, 305C, 400C, 404C, 405C, 451D, 451E, 452D, 452E, 452F	237.43		237.43
Minnesota State University Moorhead	ART 203D, 203E, 203F, 203K, 300D, 300E, 300F, 300K, 303D, 303E, 303F, 304D, 304E, 304F, 305D, 305E, 305F, 400D, 400E, 400F, 404D, 404E, 404F, 405D, 405E, 405F, 451F	252.43		252.43
Minnesota State University Moorhead	ART 203H, 303H	242.43	(10.00)	232.43
Minnesota State University Moorhead	ART 203L	237.43	(13.00)	224.43
Minnesota State University Moorhead	ART 350	232.43	(3.00)	229.43
Minnesota State University Moorhead	ART 494A	257.43		257.43
Minnesota State University Moorhead	ART 494D, 494E	237.43		237.43
Minnesota State University Moorhead	ART 494F	252.43		252.43
Minnesota State University Moorhead	AST 102, 104	232.43		232.43
Minnesota State University Moorhead	AST 365	227.43		227.43
Minnesota State University Moorhead	BCBT 100	232.43		232.43
Minnesota State University Moorhead	BCBT 220	new		232.43
Minnesota State University Moorhead	BCBT 360, 397, 461, 462, 463, 497	new		247.43
Minnesota State University Moorhead	BCBT 420, 425, 430, 475, 476, 477, 478, 479, 480, 481, 482, 490	247.43		247.43
Minnesota State University Moorhead	BCBT 520, 525, 530	362.00	10.00	372.00
Minnesota State University Moorhead	BIOL 109, 125, 126, 236, 300, 370	232.43		232.43
Minnesota State University Moorhead	BIOL 111, 115, 275, 305, 321, 322, 323, 326, 341, 345, 347, 349, 350, 360, 365, 372, 385L, 390, 402, 455, 479, 497	242.43		242.43
Minnesota State University Moorhead	CJ 290	297.43		297.43
Minnesota State University Moorhead	CM 496	288.43		288.43
Minnesota State University Moorhead	COMH 468	272.43		272.43
Minnesota State University Moorhead	CNSA 691A, 691B, 691C	425.00	10.00	435.00
Minnesota State University Moorhead	CNSA 692A, 692B, 692C	450.00	10.00	460.00
Minnesota State University Moorhead	ED 205, 294, 310	252.43		252.43
Minnesota State University Moorhead	FILM 100, 172, 200, 284, 384, 400, 401, 472, 484, 485, 496	252.43		252.43
Minnesota State University Moorhead	FILM 372, 375	247.43		247.43
Minnesota State University Moorhead	GDES 203 (formerly ART 203B)	242.43		242.43
Minnesota State University Moorhead	GDES 303, 304, 305, 404, 405 (formerly ART 303B, 304B, 305B, 404B, 405B)	252.43		252.43
Minnesota State University Moorhead	GDES 306	new		252.43
Minnesota State University Moorhead	GDES 400, 494 (formerly ART 400B, 494B)	237.43		237.43
Minnesota State University Moorhead	GEOS 115	223.68		223.68

Institution	Program/Course Name	FY2014 Tuition Rate Per Credit	FY2015 \$ Increase Per Credit	FY2015 Tuition Rate Per Credit
Minnesota State University Moorhead	GEOS 116, 117, 170, 301, 302, 303, 307 (formerly 405), 315, 320, 330, 340, 350, 360, 370, 415, 416, 417	224.09		224.09
Minnesota State University Moorhead	GEOS 207, 407	new		224.09
Minnesota State University Moorhead	HLTH 110	227.43		227.43
Minnesota State University Moorhead	HLTH 125	237.43		237.43
Minnesota State University Moorhead	HLTH 311, 327, 335, 340, 412, 465	232.43		232.43
Minnesota State University Moorhead	HSAD 468	272.43		272.43
Minnesota State University Moorhead	MATH 105, 110, 127, 142, 143, 229, 232, 261, 262	225.43		225.43
Minnesota State University Moorhead	MATH 234, 238, 260, 355	227.43		227.43
Minnesota State University Moorhead	MDEV 090, 095, 099	227.43		227.43
Minnesota State University Moorhead	MUS 107A, 107B, 108A, 108B, 110, 150A, 150B, 151, 152, 191, 207, 208, 209, 219, 231, 232, 233, 234, 235, 236, 291, 300, 303, 304, 305, 307, 319, 328, 333, 334, 335, 342, 343, 372, 375, 377, 390, 391, 392, 421, 423, 431A, 431B, 432, 433, 440, 441, 442, 445, 446, 447, 471, 472, 475, 496	262.43		262.43
Minnesota State University Moorhead	MUS 166, 184, 266, 281, 284, 363, 364, 365, 366, 381, 382, 384, 461, 463, 466, 469, 481, 482, 484, 486	297.43		297.43
Minnesota State University Moorhead	MUS 523, 524, 527, 531A, 531B, 545, 572, 574, 595, 596, 620, 621, 632, 634, 635, 636, 637, 674, 695, 697, 699	377.00	10.00	387.00
Minnesota State University Moorhead	MUS 682, 685, 686	412.00	10.00	422.00
Minnesota State University Moorhead	NURS 301	239.43		239.43
Minnesota State University Moorhead	NURS 473	261.43	(26.00)	235.43
Minnesota State University Moorhead	NURS 600	437.00	10.00	447.00
Minnesota State University Moorhead	NURS 642P	440.00	20.00	460.00
Minnesota State University Moorhead	NURS 643P	420.00	20.00	440.00
Minnesota State University Moorhead	NURS 644P, 645P	new		440.00
Minnesota State University Moorhead	PARA 425	234.43		234.43
Minnesota State University Moorhead	PHYS 105, 140, 160, 161, 200, 201, 302, 305, 306, 312, 350	232.43		232.43
Minnesota State University Moorhead	PHYS 318, 322, 370	227.43		227.43
Minnesota State University Moorhead	POL 270	272.43		272.43
Minnesota State University Moorhead	PSCI 170	232.43		232.43
Minnesota State University Moorhead	PSY 230	225.43		225.43
Minnesota State University Moorhead	PSY 620	431.00	10.00	441.00
Minnesota State University Moorhead	PSY 622	445.00	25.00	470.00
Minnesota State University Moorhead	PSY 723	425.00	20.00	445.00
Minnesota State University Moorhead	PSY 724	430.00	10.00	440.00
Minnesota State University Moorhead	School of Business (only includes 300- and 400-level courses in the following rubrics: ACCT, BUS, FINC, MGMT, MKTG)	228.43		228.43
Minnesota State University Moorhead	SLHS 273, 421, 446	237.43		237.43
Minnesota State University Moorhead	SLHS 347	252.43		252.43

Institution	Program/Course Name	FY2014 Tuition Rate Per Credit	FY2015 \$ Increase Per Credit	FY2015 Tuition Rate Per Credit
Minnesota State University Moorhead	SLHS 473	227.43		227.43
Minnesota State University Moorhead	SOC 351	225.43		225.43
Minnesota State University Moorhead	SPED 225	252.43		252.43
Minnesota State University Moorhead	STL 291, 330	227.43		227.43
Minnesota State University Moorhead	Student Teaching Abroad	322.43		322.43
Minnesota State University Moorhead	WS 415	236.43		236.43

Minnesota West Community & Technical College	DEN1120 Chairside Assisting I	181.55		181.55
Minnesota West Community & Technical College	DEN1125 Chairside Assisting II	181.55		181.55
Minnesota West Community & Technical College	DEN1140 Dental Materials	184.88		184.88
Minnesota West Community & Technical College	DEN1105 Oral Radiology II	198.22		198.22
Minnesota West Community & Technical College	DEN1145 Expanded Functions A	198.22		198.22
Minnesota West Community & Technical College	DEN1150 Expanded Functions B	198.22		198.22
Minnesota West Community & Technical College	HC1175 Nursing Assistant	182.09		182.09
Minnesota West Community & Technical College	LAW1120 Physical Fitness	221.55		221.55
Minnesota West Community & Technical College	LAW2233 Firearms-Patrol Ops	221.55		221.55
Minnesota West Community & Technical College	LAW2250 Accident Inv-Radar-Radio	221.55		221.55
Minnesota West Community & Technical College	LAW2300 Tactical Management	221.55		221.55
Minnesota West Community & Technical College	LAW2310 Use of Force	221.55		221.55
Minnesota West Community & Technical College	LAW2340 Traffic Law-Traffic Stops	221.55		221.55
Minnesota West Community & Technical College	MUSC1140 Piano Lessons	321.55		321.55
Minnesota West Community & Technical College	MUSC1141 Piano Lessons	321.55		321.55
Minnesota West Community & Technical College	MUSC1145 Voice Lessons	321.55		321.55
Minnesota West Community & Technical College	MUSC1146 Voice Lessons	321.55		321.55
Minnesota West Community & Technical College	MUSC2140 Piano Lessons	321.55		321.55
Minnesota West Community & Technical College	MUSC2141 Piano Lessons	321.55		321.55
Minnesota West Community & Technical College	MUSC2145 Voice Lessons	321.55		321.55
Minnesota West Community & Technical College	MUSC2146 Voice Lessons	321.55		321.55
Minnesota West Community & Technical College	PHED1145 Bowling	256.55		256.55
Minnesota West Community & Technical College	PHED1160 Beginning Golf	186.55		186.55
Minnesota West Community & Technical College	All other Online Courses	184.05		184.05

Normandale Community College	NURS 1110 Nursing 1	193.79		193.79
Normandale Community College	NURS 1120 Nursing 2	193.79		193.79
Normandale Community College	NURS 1130 Transition to RN for LNP	193.79		193.79
Normandale Community College	NURS 2210 Nursing 3	193.79		193.79
Normandale Community College	NURS 2220 Nursing 4	193.79		193.79
Normandale Community College	NURS 1057 Nursing Assistant	193.79		193.79
Normandale Community College	NURS 1135 Nursing Health Assessment	193.79		193.79
Normandale Community College	NURS 1140 Clinical Internship	193.79		193.79
Normandale Community College	NURS 1190 Clinic Enrichment	193.79		193.79
Normandale Community College	DENH 1112 Oral Anatomy, Embryology, Histology	193.79		193.79
Normandale Community College	DENH 1140 Pre-Clinic Theory	193.79		193.79
Normandale Community College	DENH 1143 Clinic 1	193.79		193.79
Normandale Community College	DENH 1150 Dental Radiology	193.79		193.79
Normandale Community College	DENH 1151 Accelerated Dental Radiology	193.79		193.79
Normandale Community College	DENH 1160 Dental Materials	193.79		193.79

Institution	Program/Course Name	FY2014 Tuition Rate Per Credit	FY2015 \$ Increase Per Credit	FY2015 Tuition Rate Per Credit
Normandale Community College	DENH 1161 Accelerated Dental Materials	193.79		193.79
Normandale Community College	DENH 2241 Clinic II	193.79		193.79
Normandale Community College	DENH 2243 Clinic 3	193.79		193.79
Normandale Community College	DENH 2252 Clinical Radiology 1	193.79		193.79
Normandale Community College	DENH 2254 Clinical Radiology 2	193.79		193.79
Normandale Community College	DENH 2263 Pain Management	193.79		193.79
Normandale Community College	DENH 2263 Pain Management	193.79		193.79
Normandale Community College	DENH 1139 Infection Control and Disease Prevention	193.79		193.79
Normandale Community College	DENH 1141 Pre-Clinic Skill Development	193.79		193.79
Normandale Community College	DENH 1142 Clinic Theory I	193.79		193.79
Normandale Community College	DENH 1144 Special Needs	193.79		193.79
Normandale Community College	DENH 1162 Pharmacology	193.79		193.79
Normandale Community College	DENH 2240 Clinic 2 Theory	193.79		193.79
Normandale Community College	DENH 2242 Clinic 3 Theory	193.79		193.79
Normandale Community College	DENH 2264 Periodontics for the Dental Hygienist	193.79		193.79
Normandale Community College	DENH 2266 General and Oral Pathology	193.79		193.79
Normandale Community College	DENH 2281 Preventive Concepts in Community Dental Health	193.79		193.79
Northland Community & Technical College	CRJU 2220	255.67		255.67
Northland Community & Technical College	SURT 2212	246.13		246.13
Northland Community & Technical College	PNSG 1200	354.50		354.50
Northland Community & Technical College	NURS 2110	476.30		476.30
Northwest Technical College - Bemidji	BLDG 1108 Metal Fabrication	185.00		185.00
Riverland Community College	General Biology BIOL 1091	174.60		174.60
Riverland Community College	General Biology BIOL 1092	174.60		174.60
Riverland Community College	A & P I BIOL 2021	174.60		174.60
Riverland Community College	A & P II BIOL 2022	174.60		174.60
Riverland Community College	Microbiology BIOL 2040	174.60		174.60
Riverland Community College	Forensic Biology BIOL 1050	174.60		174.60
Riverland Community College	Nursing Assistant HCNA 1200	182.36		182.36
Riverland Community College	Nursing Assistant Practicum HCNA 1101	174.60		174.60
Riverland Community College	Fundamentals of Wireless LANs	189.60		189.60
Riverland Community College	Fundamentals of Network Security	189.60		189.60
Riverland Community College	Basic Firearms LAWE 1115	214.60		214.60
Riverland Community College	Criminal Investigations LAWE 1110	214.60		214.60
Riverland Community College	Vehicle Ops LAWE 2140	214.60		214.60
Riverland Community College	Police Tactics and Procedures LAWE 2130	214.60		214.60
Riverland Community College	Criminal Procedures LAWE 2122	214.60		214.60
Riverland Community College	Industry Related Welding DESL 1107	189.60		189.60
Riverland Community College	Gas Welding IMMR 1730	189.60		189.60

Institution	Program/Course Name	FY2014 Tuition Rate Per Credit	FY2015 \$ Increase Per Credit	FY2015 Tuition Rate Per Credit
Riverland Community College	Gas Metal Arc Welding IMMR 2765	189.60		189.60
Riverland Community College	Arc Welding IMMR 1725	189.60		189.60
Riverland Community College	Gas Tungsten Arc Welding IMMR 2770	189.60		189.60
Riverland Community College	Music Private Lessons (MUS 1150-1179 & 2150-2179)	189.60		189.60
Riverland Community College	TAST 2214 Advanced Engine Service	287.20		287.20
Riverland Community College	TAST 2215 High Performance Cylinder Heads	287.20		287.20
Riverland Community College	TAST 2216 High Performance Cylinder Blocks	287.20		287.20
Riverland Community College	Emergency Medical Technician EMER 1200	169.77		169.77
Riverland Community College	Intro to Radiography RADT 1211	202.36		202.36
Riverland Community College	Clinical II RADT 2283	197.42		197.42
Riverland Community College	Concepts of Nursing NURS 1020	198.48		198.48
Riverland Community College	Advanced Med/Surgical NURS 2010	198.48		198.48
Riverland Community College	Hser Field Experience I HSER 1101	195.65		195.65
Riverland Community College	Internship I HSER 2200	172.36		172.36
Riverland Community College	Internship II HSER 2201	172.36		172.36
Riverland Community College	Intr & Treatment Applications HSER 1103	180.12		180.12
Riverland Community College	Internship IV HSER 2203	168.48		168.48
Riverland Community College	TAST 2218 Advanced High Performance Engine Assembly	287.20		287.20

Rochester Community and Technical College	Dental Radiology DS 1300	184.10		184.10
Rochester Community and Technical College	Independent Study	194.10		194.10
Rochester Community and Technical College	ART 1115 - Study Tour	214.10		214.10
Rochester Community and Technical College	Spch 2100	419.10		419.10
Rochester Community and Technical College	NURS 2400	419.10		419.10
Rochester Community and Technical College	SPAN 1001	264.10		264.10
Rochester Community and Technical College	HORT 2390	274.10		274.10

Saint Paul College	ASLS 1411-1414 American Sign Language 1-4	175.90		175.90
Saint Paul College	ASLS 1420 ASL Linguistics	175.90		175.90
Saint Paul College	ASLS 1430 Classifiers	175.90		175.90
Saint Paul College	BIOC 1760 Chemical & Biological Instrumentation	175.90		175.90
Saint Paul College	BIOC 1761 Chemical & Biological Ethics & Regulations	175.90		175.90
Saint Paul College	BIOC 2700 Biochemistry	175.90		175.90
Saint Paul College	BIOC 2790 Biochemistry Internship/Research Project	175.90		175.90
Saint Paul College	BIOL 1730 Human Body Systems	175.90		175.90
Saint Paul College	BIOL 1740 & 1745 General Biology 1 & 2	175.90		175.90
Saint Paul College	BIOL 1782 Introduction to Forensic Science	175.90		175.90

Institution	Program/Course Name	FY2014 Tuition Rate Per Credit	FY2015 \$ Increase Per Credit	FY2015 Tuition Rate Per Credit
Saint Paul College	BIOL 2721 & 2722 Human Anatomy and Phys 1 & 2	175.90		175.90
Saint Paul College	BIOL 2750 General Microbiology	175.90		175.90
Saint Paul College	CHEM 1700 Chemistry Concepts	175.90		175.90
Saint Paul College	CHEM 1711 & 1712 Principles of Chemistry 1 & 2	175.90		175.90
Saint Paul College	CHEM 1760 & 1761 Chem Tech Lab Skills, Lab Safety	175.90		175.90
Saint Paul College	CHEM 2711 & 2712 Organic Chemistry 1 & 2	175.90		175.90
Saint Paul College	CHSN 1409 Preclinic Chemical Control	191.71		191.71
Saint Paul College	CHSN 1413 Preclinic Hair Color	191.71		191.71
Saint Paul College	CHSN 1445 Cosmetic Chemistry & Makeup Applications	191.71		191.71
Saint Paul College	CHSN 1450 Skin Analysis & Massage	191.71		191.71
Saint Paul College	CHSN 1520 40 Hour Refresher	191.71		191.71
Saint Paul College	CHSN 1565 155 Hour Reactivation	191.71		191.71
Saint Paul College	CHSN 1585 Esthetics Refresher	191.71		191.71
Saint Paul College	CHSN 1590 Esthetics Reactivation	191.71		191.71
Saint Paul College	CHSN 2411 CIDESCO Exam Student Preparation	191.71		191.71
Saint Paul College	CULA 1400 Culinary Basics 1	191.71		191.71
Saint Paul College	CULA 1420 Culinary Basics 2	191.71		191.71
Saint Paul College	CULA 1450 Meat Fabrication	191.71		191.71
Saint Paul College	CULA 1460 Basic Menu Prod	191.71		191.71
Saint Paul College	CULA 1510 Commercial Bakery	191.71		191.71
Saint Paul College	CULA 1520 Commercial Pantry	191.71		191.71
Saint Paul College	CULA 1530 Commercial Range	191.71		191.71
Saint Paul College	CULA 1550 Grill/Short Order	191.71		191.71
Saint Paul College	CULA 1570 Basic Cake Décor	191.71		191.71
Saint Paul College	CULA 1610 Flavor Dynamics of Wine	261.71		261.71
Saint Paul College	CULA 2411 Rest Operat Lab 1	191.71		191.71
Saint Paul College	CULA 2412 Rest Operat Lab 2	191.71		191.71
Saint Paul College	CULA 2430 Adv Food Prep	191.71		191.71
Saint Paul College	CULA 2440 Ice Carving	191.71		191.71
Saint Paul College	CULA 2450 Adv Cake Pastry	191.71		191.71
Saint Paul College	CULA 2460 Classical Buffet	191.71		191.71
Saint Paul College	CULA 3630 Artisan Breads	191.71		191.71
Saint Paul College	CULA 3635 Artisan Cheese	191.71		191.71
Saint Paul College	CULA 3640 Fundamentals of Charcuterie	191.71		191.71
Saint Paul College	CULA 3650 Organic Foods	191.71		191.71
Saint Paul College	ESOL 0820 Pronunciation and Articulation	175.90		175.90
Saint Paul College	HLTH 1465 Functional Holistic Nutrition	175.90		175.90
Saint Paul College	INTP 1512 & 1513 Consecutive Interpreting 1 & 2	175.90		175.90
Saint Paul College	INTP 2411 & 2412 Sign to Voice Interpreting 1 & 2	175.90		175.90

Institution	Program/Course Name	FY2014 Tuition Rate Per Credit	FY2015 \$ Increase Per Credit	FY2015 Tuition Rate Per Credit
Saint Paul College	INTP 2421 & 2422 Voice to Sign Interpreting 1 & 2	175.90		175.90
Saint Paul College	INTP 2431 & 2432 Transliterating 1 & 2	175.90		175.90
Saint Paul College	MLDT 1421 Hematology 1	211.71		211.71
Saint Paul College	MLDT 1422 Hematology 2	211.71		211.71
Saint Paul College	MLDT 1430 Urinalysis/Body Fluids	211.71		211.71
Saint Paul College	MLDT 1441 Clinic Chem 1	211.71		211.71
Saint Paul College	MLDT 1442 Clinic Chem 2	211.71		211.71
Saint Paul College	MLDT 1446 Phlebotomy	211.71		211.71
Saint Paul College	MLDT 1510 Immunology	211.71		211.71
Saint Paul College	MLDT 2400 Mycology/Parasitology	211.71		211.71
Saint Paul College	MLDT 2410 Immunoematology	211.71		211.71
Saint Paul College	MLDT 2420 Clinic Microbiology	211.71		211.71
Saint Paul College	PHYS 1720 & 1722 Principles of Physics 1 & 2	175.90		175.90
Saint Paul College	PHYS 2700 & 2710 General Physics 1 & 2	175.90		175.90
Saint Paul College	PRNS 1491 Clinical 1	211.71		211.71
Saint Paul College	PRNS 1492 Clinical 2	211.71		211.71
Saint Paul College	PRNS 1493 Clinical 3	211.71		211.71
Saint Paul College	PRNS 2491 Practicum	211.71		211.71

South Central College	On line courses and programs	195.70		195.70
South Central College	Accounting 2900	166.00		166.00
South Central College	BIOL 235 Anatomy and Physiology II	168.70		168.70
South Central College	BIOL 270 Microbiology	169.06		169.06
South Central College	BIOL 225 Anatomy and Physiology I	165.07		165.07
South Central College	BIOL 100 Intro to Biology	163.50		163.50
South Central College	BIOL 101 Intro to Ecology	163.89		163.89
South Central College	BIOL 115 General Biology 1	168.76		168.76
South Central College	BIOL 116 General Biology 2	164.02		164.02
South Central College	BIOL 211 Genetic	169.98		169.98
South Central College	BIOL 220 Human Anatomy	172.95		172.95
South Central College	BIOL 230 Human Physiology	170.66		170.66
South Central College	CDEV 1230 Guiding Children's Behavior	167.86		167.86
South Central College	CDEV 2510 Internship	167.86		167.86
South Central College	CIM 1126 Concept Engineering 1	174.47		174.47
South Central College	CIM 1225 Concept Engineering 2	169.95		169.95
South Central College	CIM 2225 Technical Design IV FALL 2013 ONLY	167.24		167.24
South Central College	CIM 2225 Technical Design IV SPRING 2014 ONLY	176.99		176.99
South Central College	Civing Engineering Technology 1820 Material Tech	188.70		188.70
South Central College	Community Social Service CSS 1910	168.64		168.64
South Central College	Engineering Foundations ENGR 1121 (2 cr)	226.20		226.20

Institution	Program/Course Name	FY2014 Tuition Rate Per Credit	FY2015 \$ Increase Per Credit	FY2015 Tuition Rate Per Credit
South Central College	Engineering Foundations ENGR 1222 (2 cr)	261.20		261.20
South Central College	Engineering Foundations ENGR 2113	261.20		261.20
South Central College	Engineering Foundations ENGR 2214	261.20		261.20
South Central College	GCC 1120 Graphic Software 1	169.95		169.95
South Central College	GCC 1220 Graphic Software 2	169.95		169.95
South Central College	GCC 1260 Printing Process	176.20		176.20
South Central College	GCC 2210 Design & Illustration 2	169.95		169.95
South Central College	GCC 2220 Portfolio 2	176.20		176.20
South Central College	GCC 2261 Production Work Flow 2	182.45		182.45
South Central College	HCTC 1886 Basic Nursing 101	168.64		168.64
South Central College	HEMS 1200 EMT	180.04		180.04
South Central College	HEMS 1220 EMT - Refresher	179.08		179.08
South Central College	HVAC 2100 Theory	178.70		178.70
South Central College	HVAC 2340 - Sheet Metal Ductwork Fabrication	168.66		168.66
South Central College	ICP 1000 Intro Paramedics	207.86		207.86
South Central College	ICP 1010 EMS Skills	165.20		165.20
South Central College	ICP 2030 Critical Care 1	164.45		164.45
South Central College	ICP 2050 Field Internship 1	177.86		177.86
South Central College	ICP 2060 Field Internship II	177.86		177.86
South Central College	Marketing MKT 1940 01	167.86		167.86
South Central College	Medical Assisting MA 2040	192.45		192.45
South Central College	MDLT 1810 Lab Techniques and Orientation	164.45		164.45
South Central College	MDLT 1815 Hematology	167.87		167.87
South Central College	MDLT 1825 Urinalysis/Body Fluids	171.12		171.12
South Central College	NURS 1150 Clinical Foundation	181.12		181.12
South Central College	NURS 1175 Nursing Interventions	171.20		171.20
South Central College	NURS 1275 Medication Administration	171.20		171.20
South Central College	NURS 1350 Clinical Application	171.20		171.20
South Central College	NURS 2250 Clinical Practice Semester 1	186.08		186.08
South Central College	NURS 2275 Skills & Pharm 1	171.20		171.20
South Central College	NURS 2350 Clinical Practice	171.20		171.20
South Central College	NURS 2375 Skills & Pharm II	171.20		171.20
South Central College	NURS 2450 Semester 3 Clinical Practice	178.64		178.64
South Central College	NURS 2550 Semester 4 Clinical Practice	171.20		171.20
South Central College	DA 1814 Chairside DA1	164.81		164.81
South Central College	PHRM 2119 Hospital/Institutional Internship	193.25		193.25
South Central College	QFPR 1841 Basic Meat/Poultry/Fish/Shellfish	176.20		176.20
South Central College	QFPR 1850 Basic Baking	171.20		171.20
South Central College	Welding 1 FastTRAC	247.74		247.74
South Central College	Welding 2 FastTRAC	247.74		247.74
South Central College	Capstone CAP 250 AA of Arts	175.20		175.20
South Central College	Welding 1045	NEW		199.55

Institution	Program/Course Name	FY2014 Tuition Rate Per Credit	FY2015 \$ Increase Per Credit	FY2015 Tuition Rate Per Credit
-------------	---------------------	--------------------------------	-------------------------------	--------------------------------

Southwest Minnesota State University	Global Studies Travel course (3 cr course)	418.20		418.20
Southwest Minnesota State University	Hosp. 486: Cruiselines (1 credit course)	296.20		296.20
Southwest Minnesota State University	PE 142 Bowling (1 credit)	271.20		271.20
Southwest Minnesota State University	PE 122 Lifetime Activities (3 credit course)	241.20		241.20
Southwest Minnesota State University	PE 144 Adventure Ropes (1 credit course)	241.20		241.20
Southwest Minnesota State University	PE 210 Introduction to Adapted PE (3 cr)	229.20		229.20
Southwest Minnesota State University	PE 144 Golf 1 credit course	281.20		281.20
Southwest Minnesota State University	Computer Science courses: \$5.25/credit differential Courses COMP 164, 165, 166, 233, 306, 324, 351, 368, 376, 377	231.45		231.45

St. Cloud State University	EDAD 605 Educational Administration	394.28	11.83	406.11
St. Cloud State University	EDAD 608 Educational Administration	394.28	11.83	406.11
St. Cloud State University	EDAD 613 Educational Administration	394.28	11.83	406.11
St. Cloud State University	EDAD 631 Advanced Supervision Techniques	394.28	11.83	406.11
St. Cloud State University	EDAD 622 Legal Aspects for Educational Administration	394.28	11.83	406.11
St. Cloud State University	EDAD 640 Educational Administration	394.28	11.83	406.11
St. Cloud State University	EDAD 646 Educational Administration	394.28	11.83	406.11
St. Cloud State University	EDAD 657 Educational Administration	394.28	11.83	406.11
St. Cloud State University	EDAD 697 Current Programs & Issues in School Administration	394.28	11.83	406.11
St. Cloud State University	EDAD 802 Leadership Development	618.00	18.54	636.54
St. Cloud State University	EDAD 804 Visioning and the Change Process	618.00	18.54	636.54
St. Cloud State University	SPED 601 Trends and Problems in Special Education	394.28	11.83	406.11
St. Cloud State University	SPED 602 Research in Special Education	394.28	11.83	406.11
St. Cloud State University	ROTC courses taught by ROTC instructors	0.00		0.00

St. Cloud Technical & Community College	HPWT 2502 – Reverse Osmosis Chemistry	192.86		192.86
St. Cloud Technical & Community College	HPWT2504 – Reverse Osmosis Principles	192.86		192.86
St. Cloud Technical & Community College	HPWT2506 - Reverse Osmosis (RO) Monitoring	192.86		192.86
St. Cloud Technical & Community College	HPWR2508 – Reverse Osmosis (RO) Cleaning	192.86		192.86
St. Cloud Technical & Community College	HPWT2510 – Reverse Osmosis (RO) Pretreatment	192.86		192.86

Institution	Program/Course Name	FY2014 Tuition Rate Per Credit	FY2015 \$ Increase Per Credit	FY2015 Tuition Rate Per Credit
St. Cloud Technical & Community College	HPWT2512 – Reverse Osmosis (RO) Biological Control	192.86		192.86
St. Cloud Technical & Community College	HPWT2514 – Reverse Osmosis (RO) System Design	192.86		192.86

Institution	Program/Course Name	FY2014 Tuition Rate Per Credit	FY2015 \$ Increase Per Credit	FY2015 Tuition Rate Per Credit
St. Cloud Technical & Community College	HPWT2516 – Reverse Osmosis (RO) System Analysis	192.86		192.86
St. Cloud Technical & Community College	HPWT2518 – Ion Exchange (IX) Principles	192.86		192.86
St. Cloud Technical & Community College	HPWT2520 – Electrodialysis Reversal (EDR) & Electrodeionization (EDI)	192.86		192.86
St. Cloud Technical & Community College	HPWT2522 – Ion Exchange (IX) System Design	192.86		192.86
St. Cloud Technical & Community College	HPWT2524 – Ion Exchange (IX) System Analysis	192.86		192.86
St. Cloud Technical & Community College	HPWT2526 – Deionized (DI) Water Principles	192.86		192.86
St. Cloud Technical & Community College	HPWT2528 – Deionized (DI) Water System Design	192.86		192.86
St. Cloud Technical & Community College	HPWT2530 – Deionized (DI) Water System Analysis	192.86		192.86
St. Cloud Technical & Community College	HPWT2532 – Deionized (DI) Water Maintenance	192.86		192.86
Vermilion Community College	PREC 2271-2275 Seasonal Park Law Enforcement Ranger Training	272.67		272.67
Vermilion Community College	HLTH 1755 Emergency Medical Response	273.84		273.84
Vermilion Community College	HLTH 1761 EMT Preparation Course	213.06		213.06
Vermilion Community College	HLTH 1765 Emergency Medical Technician	213.06		213.06
Vermilion Community College	HLTH 1762 Emergency Medical Technician Completion	213.06		213.06
Vermilion Community College	HLTH 1255 Wilderness Emergency Response	350.75		350.75
Vermilion Community College	HLTH 1275 Wilderness First Responder	273.84		273.84
Vermilion Community College	HLTH 1276 Wilderness First Responder Open Recert	273.84		273.84
Vermilion Community College	HLTH 1265 Winter Wilderness Emergency Response	350.75		350.75
Vermilion Community College	HLTH 1445 Low Angle - Technical Rope Rescue	350.75		350.75
Vermilion Community College	HLTH 1446 High Angle Technical Rope Rescue	350.75		350.75
Vermilion Community College	HLTH 1447 Water, Boat, and Ice Rescue	350.75		350.75
Vermilion Community College	HLTH 1448 ATV and GPS Land-Based Rescue	350.75		350.75
Vermilion Community College	Independent Study courses	269.06		269.06
Vermilion Community College	All resident courses offered via online (excluding any courses/programs with a differential tuition rate)	182.62		182.62
Vermilion Community College	TXDY 1225 Taxidermy Forum	272.67		272.67
Vermilion Community College	TXDY 1235 State and Federal Taxidermy Regulations	272.67		272.67

Institution	Program/Course Name	FY2014 Tuition Rate Per Credit	FY2015 \$ Increase Per Credit	FY2015 Tuition Rate Per Credit
Vermilion Community College	TXDY 1245 Game Head Mounts	272.67		272.67
Vermilion Community College	TXDY 1255 Full Body Mounts	272.67		272.67
Vermilion Community College	TXDY 1265 Bird Mounts	272.67		272.67
Vermilion Community College	TXDY 1275 Fish Mounts	272.67		272.67
Vermilion Community College	TXDY 1285 Habitats and Bases	272.67		272.67
Winona State University	Creative Visions Teaching Academy (CVTA)	up to \$200/credit		up to \$200/credit
Winona State University	SCIE 640 Topics in STEM Professional Development	150.00		150.00

**Minnesota State Colleges & Universities
FY2015 Non-resident Tuition Rates**

Institution	FY2014 Non-Resident	FY2015 Non-Resident
STATE COLLEGES		
Alexandria Technical & Community College	\$160.55	160.55
Anoka-Ramsey Community College	\$144.96	144.96
Anoka Technical College	\$166.99	166.99
Central Lakes College	\$159.10	159.10
Century College	\$160.60	160.60
Dakota County Technical College	\$168.95	168.95
Fond du Lac Tribal & Community College	\$158.90	158.90
Hennepin Technical College	\$156.70	156.70
Inver Hills Community College	\$159.00	159.00
Lake Superior College	\$294.51	294.51
Minneapolis Community & Technical College	\$155.25	155.25
Minnesota State College-Southeast Technical	\$167.31	167.31
Minnesota State Community & Technical College	\$160.80	160.80
Minnesota West Community & Technical College*	\$343.10	343.10
Normandale Community College	\$161.49	161.49
North Hennepin Community College	\$165.08	165.08
Northeast Higher Ed District		
Hibbing Community College	\$197.02	197.02
Itasca Community College	\$197.02	197.02
Mesabi Range College	\$197.02	197.02
Rainy River Community College	\$197.02	197.02
Vermilion Community College	\$197.02	197.02
Northland Community & Technical College	\$165.00	165.00
Northwest Technical College (Bemidji)	\$173.00	173.00
Pine Technical College	\$306.32	306.32
Ridgewater College	\$161.30	161.30
Riverland Community College	\$164.60	164.60
Rochester Community and Technical College	\$164.10	164.10
Saint Paul College	\$161.71	161.71
St. Cloud Technical & Community College	\$158.91	158.91
South Central College	\$161.20	161.20

STATE UNIVERSITIES	FY2014 Undergraduate	FY2015 Undergraduate	FY2014 Graduate	FY2015 Graduate
Bemidji State University	\$249.85	\$ 249.85	\$365.80	\$ 376.75
Metropolitan State University	\$430.45	\$ 430.45	\$672.66	\$ 692.84
Minnesota State University, Mankato (UG 1-11 cr) (Gr a	\$564.04	\$564.04	\$355.30	\$ 365.95
Minnesota State University, Mankato (UG Banded 12-18	\$7,073.04	\$7,073.04	n/a	n/a
Minnesota State University, Mankato (UG 19 + cr)	\$7,073.04 + \$575	\$7,073.04 + \$575	n/a	n/a
Minnesota State University Moorhead** (UG 1-11 cr.) (C	\$444.86	\$ 444.86	\$674.00	\$ 694.00
Minnesota State University Moorhead** (UG 12-19 cr.)	\$6,898.00	\$ 6,898.00	n/a	n/a
Minnesota State University Moorhead** (UG 20+ cr.)	\$6,898 + \$444.86	\$6,898 + \$444.86	n/a	n/a
Saint Cloud State University	\$474.20	\$ 474.20	\$538.86	\$ 555.03
Southwest Minnesota State University	\$226.20	\$ 226.20	\$359.50	\$ 368.50
Winona State University	\$411.90	\$ 411.90	\$542.10	\$ 542.10

*Minnesota West only charge these rates to non-residents/non-reciprocity if paperwork is not submitted or MN resident tuition scholarship eligibility is not maintained; otherwise charge resident rate. St. Cloud State University charges resident rates for the following types of students: international, graduate assistants, athletic/academic talent, alumni legacy, and high achiever.

**Effective Fall 2012, non-resident rates will be charged to all MSU Moorhead NR/NR students; this was updated in last year's presentation to the Board

**Minnesota State Colleges and Universities
Revenue Fund
Proposed Room and Board Fees FY 2015**

	Approved FY 2014	Projected FY 2015	Percent Change
Bemidji State University			
Double Room	\$4,555.00	\$4,690.00	3.0%
Single Room	\$5,300.00	\$5,460.00	3.0%
Meal Plan options			
400 meals + 640 Flex Dollars	\$2,700.00	\$2,780.00	3.0%
Flex Dollars	\$2,700.00	\$2,780.00	3.0%
Summer Session (per week)	\$125.00	\$130.00	
Minnesota State University Moorhead			
Double Room	\$4,796.00	\$4,988.00	4.0%
Single Room	\$5,513.00	\$5,733.00	4.0%
14 Meals a Week			
Flex Dollars	\$2,178.00	\$2,262.00	3.9%
	\$400.00	\$400.00	0.0%
Summer Session (10 weeks)			
Double Room	\$82.50/week	\$78.00/week	
Single Room	\$101.20/week	\$96.00/week	
Double as Single	\$114.40/week	\$108.00/week	
Minnesota State University, Mankato			
Double Room	\$4,650.00	\$4,822.00	3.7%
Single Room	\$6,478.00	\$6,717.00	3.7%
21 Meals a Week			
Flex Dollars	\$2,273.00 Chged to "Unlimited"	\$2,353.00	3.5%
	\$130.00	\$200.00	53.8%
Summer Session (10 weeks)			
	Term	Term	
Double	\$1,000.00	\$1,040.00	
Single	\$1,390.00	\$1,440.00	
Full bath suite	\$1,460.00	\$1,520.00	
St. Cloud State University			
Double Room	\$4,475.00	\$4,700.00	5.0%
Single Room	\$6,186.00	\$6,504.00	5.1%
(Carte Blanche Plan) 20 Meals a Week			
Flex Dollars	\$2,360.00	\$2,510.00	6.4%
	\$400.00	\$350.00	-12.5%
Summer Session (10 weeks)			
Double (per week)	\$75.00	\$75.00	
Single (per week)	\$100.00	\$110.00	
Southwest Minnesota State University			
Double Room	\$4,546.00	\$4,682.00	3.0%
Single Room	\$5,900.00	\$6,078.00	3.0%
14 Meals a Week			
Flex Dollars	\$2,300.00	\$2,370.00	3.0%
	\$300.00	\$300.00	0.0%
Summer Session			
	Per week	Summer	Per week
	\$130.00	\$1,300.00	\$140.00
			Summer
			\$1,400.00
Winona State University			
Double Room	\$5,046.00	\$5,246.00	4.0%
Single Room	\$6,056.00	\$6,106.00	0.8%
14 Meals a Week (Contract base)			
Flex (Basic Mandatory)	\$2,144.00	\$2,192.00	2.2%
	\$340.00	\$340.00	0.0%
Summer session (per night)	\$12.00	\$12.00	
Average (double room & board)	\$7,266	\$7,531	3.7%

Rates noted above are based on the most common traditional-style room and most popular board plan. Each university charges room and board rates based on the room type and amenities. Full rate sheets are included in the supplementary materials to the Board report.

Summer session rates have been added.

MINNESOTA STATE COLLEGES AND UNIVERSITIES

Revenue Fund

Proposed Student Union Facility Fees FY 2015

	Approved FY 2014	Proposed FY 2015	% Increase
Bemidji State University Per credit charged to all students 22.76 per credit hour by 12 credits	\$265.19	\$273.15	3.00%
Minneapolis Community & Technical College Per credit charged to all students 5.50 per credit hour by 30 credits	\$165.00	\$165.00	0.00%
Minnesota State University Moorhead Per credit charged to all students 12.07 per credit hour by 24 credits	\$281.28	\$289.68	2.99%
Minnesota State University, Mankato Per credit charged to all students 10.65 per credit hour by 24 credits	\$255.60	\$255.60	0.00%
Normandale Community College Per credit charged to all students 7.50 per credit hour by 30 credits	\$210.00	\$225.00	7.14%
St. Cloud State University Per credit charged to all students 8.30 per credit hour by 24 credits	\$200.40	\$199.20	-0.60%
Southwest Minnesota State University Per credit charged to all students 13.13 per credit hour by 24 credits	\$315.12	\$315.12	0.00%
Winona State University Per credit charged to all students 7.85 per credit hour by 32 credits	\$251.20	\$251.20	0.00%
Average Fee	\$242.97	\$246.74	1.55%
Maximum Fee	\$315.12	\$315.12	

The total maximum is the amount for the academic year only. Summer or other sessions are charged on a per credit basis.

Recently Approved Project

Metropolitan State University Per credit charged to all students 2.00 per credit hour	\$60.00	\$60.00	**	0.00%
--	---------	---------	----	-------

** This is only a preliminary fee being charged during the construction phase. This is not included in the average abc

Revenue Fund Guarantee Project

St. Cloud State University (Revenue Fund Guarantees debt) Per Credit Facility Assessment Fee 4.60 per credit hour	\$96.48	\$110.40		14.43%
--	---------	----------	--	--------

MINNESOTA STATE COLLEGES AND UNIVERSITIES
Revenue Fund

Proposed Wellness Facility Fees FY 2015

	Approved FY 2014	Proposed FY 2015	% Change
Anoka Ramsey Community College Annual Wellness Fee (5.00 per credit hour)	\$150.00	\$150.00	0.00%
Minnesota State University, Mankato Annual Outdoor Rec Facilities (2.50 per credit hour)	\$60.00	\$60.00	0.00%
Minnesota State University Moorhead Annual Wellness Fee (8.24 per credit hour)	\$197.76	\$197.76	0.00%
Minnesota State Community & Technical College Annual Wellness Fee (2.20 per credit hour)	\$66.00	\$66.00	0.00%
Winona State University Annual Wellness Fee (6.00 per credit hour)	\$144.00	\$144.00	0.00%
Average	\$123.55	\$123.55	0.00%

MINNESOTA STATE COLLEGES AND UNIVERSITIES
 Revenue Fund
 Proposed Parking Facility Fees FY 2015

		FY14	FY15	FY14	FY15	
<u>Charge By Credit</u>		<u>Per Credit</u>	<u>Per Credit</u>	<u>Annual</u>	<u>Annual</u>	<u>note</u>
Alexandria Technical and Community College	Lot	\$2.62	\$3.15	\$84.00	\$94.00	FY13 project
Century College	Lot	\$4.00	\$4.25	\$120.00	\$127.50	No change
Normandale Community College	Lot, Ramp	\$9.00	\$9.00	\$270.00	\$270.00	FY12 project
Saint Paul College	Ramp		\$9.33		\$279.90	Change in FY15 to a per credit basis
Metropolitan State University	Lot, Ramp		\$10.00		\$300.00	FY13 project
<u>Charge by Use</u>		<u>Per Day</u>	<u>Per Day</u>	<u>Annual</u>	<u>Annual</u>	<u>note</u>
Minneapolis Community and Technical College	Ramp	\$2.50	\$2.50	\$260.00	\$260.00	\$5.00/cash (non-contract)
St. Cloud State University	Ramp	\$12.00	\$12.00	\$500.00	\$500.00	\$1.50/hr; Max \$12 day
Saint Paul College*	Ramp	\$3.00	**	\$386.40	**	Change in FY15 to a per credit basis

*Assumptions for Daily Usage Fee:

Average full time student cost based on 129 days of parking

Minnesota State Colleges and Universitys Student Housing - University/College Owned
(Not in Revenue Fund)

		FY 2014 Housing Fees For the Academic Year	FY 2015 Housing Fees For the Academic Year	Change
Fond du Lac Tribal and Community College				
Cloquet				
		The school has changed their housing calculation to a daily rate (for FY 2014 it will be \$13.65 per day) Given 257 days for the average housing period, the amount charged per student would be approxmiately \$3,508.05 (an increase of 3%)		
		The school has changed their housing calculation to a daily rate (for FY 2015 it will be \$13.65 per day) Given 257 days for the average housing period, the amount charged per student would be approxmiately \$3,508.05 (no change from FY2014)		
Fall Days - 120				
<u>Spring Days - 137</u>				
Total	257 Housing Days			
Northeast Higher Education District				
Rainy River	Doubles	\$ 2,950	\$ 2,950	0.00%
	Singles	\$ 4,300	\$ 4,300	0.00%
Hibbing	Doubles	\$ 3,000	\$ 3,000	0.00%
	Singles	\$ 4,000	\$ 4,000	0.00%
Itasca	Doubles	\$ 3,790	\$ 3,900	2.90%
	Singles	\$ 3,990	\$ 4,270	7.02%
	Triples	\$ 3,580	\$ 3,690	3.07%
	Quads	\$ 3,170	\$ 3,260	2.84%
Vermilion	Doubles	\$ 3,400	\$ 3,400	0.00%
	Singles	\$ 4,400	\$ 4,400	0.00%
MSU Moorhead Foundation Apartments - 10 month Lease				
Number of beds: 144				
	Full Apartment rental	\$ 16,330	\$ 16,760	2.63%
	4 Residents	\$ 4,083	\$ 4,190	2.63%
	3 Residents	\$ 5,444	\$ 5,587	2.63%
	2 Residents	\$ 8,165	\$ 8,380	2.63%

Minnesota State Colleges and Universities Student Housing - University/College Managed
(Not in Revenue Fund)

	FY 2014 Housing Fees	FY 2015 Housing Fees	Change
	For the Academic Year	For the Academic Year	
Coburn Plaza Apartments - 10 month Lease			
Number of beds: 453			
Studio	\$ 7,874	\$ 8,000	1.60%
1 Bedroom	\$ 7,993	\$ 8,150	1.96%
2 Bedroom	\$ 7,707	\$ 7,900	2.50%
4 Bedroom	\$ 7,273	\$ 7,420	2.02%
Minnesota State Community and Technical College			
Fergus Falls			
Williams Hillside Village - Doubles	\$ 3,040	\$ 3,100	1.97%
Williams Hillside Village - Singles	\$ 3,640	\$ 3,700	1.65%
College Manor - Singles	\$ 3,500	\$ 3,600	2.86%
Board - Declining Card Balance	\$ 600	\$ 900	50.00%
Minnesota West Community and Technical College			
Canby			
Singles	\$ 2,400	\$ 2,400	0.00%
Northeast Higher Education District			
Mesabi			
Virginia Doubles	\$ 3,670	\$ 3,720	1.36%
Singles	\$ 4,145	\$ 4,222	1.86%
Riverland			
Austin			
Doubles	\$ 2,800	\$ 2,800	0.00%
Singles	\$ 4,000	\$ 4,000	0.00%
MSU Southwest Foundation Apartments - 10 month Lease			
Number of beds: 141			
2,3 and 4 bedrooms (room only)	\$ 5,766	\$ 6,238	8.19%
East Lake Apartments - Winona Foundation- 9 Month Lease			
Number of beds: 376			
Efficency	\$ 3,870	\$ 3,948	2.02%
1 Bedroom	\$ 4,180	\$ 4,264	2.01%
2 Bedroom	\$ 4,180	\$ 4,264	2.01%
4 Bedroom	\$ 4,838	\$ 4,936	2.03%