

**MINNESOTA STATE COLLEGES AND UNIVERSITIES
BOARD OF TRUSTEES
Agenda Item Summary Sheet**

Name: Finance and Facilities Committee

Date: June 17, 2015

Title: FY2016 Operating Budget (Second Reading)

Purpose (check one):

- | | | |
|---|--|---|
| <input type="checkbox"/> Proposed
New Policy or
Amendment to
Existing Policy | <input checked="" type="checkbox"/> Approvals
Required by
Policy | <input type="checkbox"/> Other
Approvals |
| <input type="checkbox"/> Monitoring /
Compliance | <input type="checkbox"/> Information | |

Brief Description:

The Board of Trustees is being asked to approve the fiscal year 2016 annual operating budget for Minnesota State Colleges and Universities, including the tuition rates and fee structure that will be in place from July 1, 2015 to June 30, 2016. Information presented in this report reflect the actions of the recently concluded 2015 legislative session.

The Board report includes summary and detailed college and university FY2016 financial information, an analysis of the net cost of education for college and university students, reallocation information, and an update on the student consultation process.

Additional financial and budget information is included in the supplemental packet.

Presenters: Laura M. King – Vice Chancellor and CFO
Deb Bednarz – Sr System Director for Financial Planning

**BOARD OF TRUSTEES
MINNESOTA STATE COLLEGES AND UNIVERSITIES**

ACTION ITEM

Fiscal Year 2016 Operating Budget (Second Reading)

BACKGROUND

The Board of Trustees is being asked to approve the fiscal year 2016 annual operating budget for Minnesota State Colleges and Universities, including the tuition rates and fee structure that will be in place from July 1, 2015 to June 30, 2016.

The fiscal year 2016 operating budget is designed both to advance the three elements of the system's strategic framework:

1. Ensure access to an extraordinary education for all Minnesotans
2. Be the partner of choice to meet Minnesota's workforce and community needs
3. Deliver the highest value / most affordable higher education option, and implement the priorities that the Board of Trustees set in its 2016-2017 biennial legislative request:
 1. Protect programs in demand so our colleges and universities can meet the workforce needs of Minnesota
 2. Provide the faculty and staff needed to deliver these programs and ensure student success
 3. Protect affordability to ensure access for all Minnesotans.

The requirement that the board approve the system's all funds operating budget is established in policy (5.9 *Biennial and Annual Operating Budget Planning and Approval*). The board's ability to set tuition and fees is authorized in statute (*Minnesota Statutes 136F.06 and 136F.70*) and board policy (5.11 *Tuition and Fees*).

Information presented in this report reflect the actions of the recently concluded 2015 legislative session.

The report includes:

- Fiscal year 2016 operating budget overview
- Net cost of education analysis
- Proposed all funds and general fund budgets
- Revenue fund overview
- Reallocation information
- Financial recovery plan status update

- Updated student consultation process and summary
- Detailed tuition and fee charges, including revenue fund fees

The proposed board motion approving the budget and fee rates is found at the end of the report. Additional financial and budget information is included in the supplemental packet.

EXECUTIVE SUMMARY

- College tuition rates will remain frozen at the rates charged during the 2012-13 academic year, and university tuition rates will increase modestly by an average of \$233. This will be the first increase in undergraduate university rates tuition since the 2012-13 academic year. For most university students receiving a state grant, the proposed tuition increase will be substantially offset by increases to the Pell and state grant program awards.
- Prior to recommending tuition rates for fiscal year 2016, university presidents and their leadership teams consulted with campus student leaders and campus union leadership. Students generally expressed support for the proposed tuition increase and were satisfied with the consultation process that occurred over the past few weeks and throughout the past year. Letters documenting the student consultative process are posted on the system's website.
- The proposed fiscal year 2016 all funds operating budget totals \$1.93 billion and the general fund budget totals \$1.56 billion. The operating budget includes \$672.9 million in state appropriation, \$50.8 million more than in fiscal year 2015, an 8.2 percent increase. The all funds budget increased one percent and the general fund budget 1.7 percent over last year.
- The proposed operating budget allocates \$23.865 million of state appropriation for institutional priorities, including \$9.752 million for access and opportunity activities, \$7.278 million for leveraged equipment purchases, and \$5.112 million for workforce education.
- Full-year equivalent (FYE) enrollment is projected to decline 1.8 percent (2,467 FYE) from prior year levels in fiscal year 2016. College enrollment is projected to fall 2.5 percent (2,103 FYE) and university enrollment is expected to drop 0.7 percent (364 FYE.) Enrollment in fiscal year 2016 is projected to be slightly higher than fiscal year 2007 levels.
- The average annual tuition cost for students attending a state college will be \$4,816, the same as it was during the 2012-13 academic year. The average annual tuition cost for students attending a state universities is projected to be \$7,016, or \$233 more than it was last year.
- Increases in state and Pell grant awards will partially offset the cost of education, resulting in a net decrease in tuition cost for eligible students. For college students

receiving state and Pell grants, the estimated average annual tuition cost is \$1,017. For undergraduate university grant recipients, the estimated average annual tuition cost is \$2,153.

- Colleges and universities are projecting reserve levels totaling \$97.3 million at the end of fiscal year 2016, which represents approximately 6.6 percent of general fund revenues.
- Average room and board rates will increase by 5.5 percent or \$406 over last year, due to lower occupancy rates and increased costs, but also as campuses respond to student interest in dining contracts with a greater number of meals as a base package when compared to last year. Student union and wellness facility fees are remaining stable this year with very minor increases of 0.7 percent to \$248.47 and 1.66 percent to \$125.60, respectively.
- The legislature appropriated slightly less money in fiscal year 2017 (\$672.7 million) than in fiscal year 2016 (\$672.9 million) to Minnesota State Colleges and Universities, which is expected to create a structural funding problem beginning in fiscal year 2017.

FISCAL YEAR 2016 OPERATING BUDGET OVERVIEW

The fiscal year 2016 operating budget balances the need to keep tuition affordable and provide a high-quality educational experience for students. Its goal is to ensure all students—whether they attend a college or university, enroll in a technical or liberal arts program, or live in Greater Minnesota or the metropolitan area—have access to an affordable, high-quality education.

Key Budget Assumptions

The proposed fiscal year 2016 all funds operating budget totals \$1.93 billion, one percent higher than in fiscal year 2015. The proposed \$1.56 billion general fund budget is 1.7 percent more than last year. The key budget assumptions are described below.

- *Increased state funding:* Based on the actions of the 2015 legislature, \$672.9 million in state appropriation is budgeted, an increase of \$50.8 million or 8.2 percent over fiscal year 2015 funding levels.
- *Tuition rates frozen at college:* College tuition rates will remain frozen for the third consecutive year; college students will continue to pay the rates that were in effect during the 2012-13 academic year.
- *Tuition rates at universities increased slightly:* The fiscal year 2016 operating budget includes an average annual \$233 (3.4 percent) increase in university tuition rates for a full-time student; tuition increases at the seven state universities will range from \$215 to \$237 for a full-time student. Graduate tuition rates will increase an average 3.7 percent or \$265 per year for a full-time student.

- *Lower enrollment projected:* Systemwide FYE enrollment is projected to decrease by 1.8 percent to 136,439, down 2.5 percent (2,103 FYE) at colleges and 0.7 percent (364 FYE) at universities.
- *Slightly declining tuition revenue:* \$778.1 million in tuition revenue is budgeted, down slightly (-0.5 percent) from last year. The projected tuition revenue reflects the enrollment and tuition rate assumptions noted above.
- *Operating expenses up slightly:* All funds expenditures are projected to increase 1.0 percent over prior year levels; general fund expenditures are projected to increase 1.7 percent. Total compensation, including salary and fringe benefits, is assumed to increase three percent in fiscal year 2016.

Budget Risks

The system operating budget is built on the assumptions described above; its successful implementation depends on the accuracy of those assumptions. System office finance staff and college and university chief financial officers have identified three primary risk areas for the fiscal year 2016 operating budget.

- *Enrollment risk:* Accurately predicting enrollment and responding quickly to enrollment changes is critical for a successful fiscal year 2016 financial outcome. To mitigate this risk, colleges and universities are undertaking recruitment and retention strategies, carefully monitoring enrollment activity, and preparing contingency plans if enrollment projections are not met.
- *Compensation cost risk:* The system operating budget assumes a three percent increase in employee compensation. As shown in Table 1, current revenue estimates do not support a three percent compensation increase in both fiscal years 2016 and 2017.
- *Structural risk:* The legislature appropriated almost \$200,000 less in fiscal year 2017 than it did in fiscal year 2016. At the same time, the legislature froze university tuition and mandated a one percent reduction in college tuition in fiscal year 2017. This funding structure, combined with tuition constraints, is expected to create a structural imbalance in fiscal year 2017 and beyond. The imbalance exists because expenses, such as compensation, typically increase each year and compound over time.

For example, if employee compensation increases three percent each year of a biennium, the cost in the second year is double the cost in the first year, assuming the same level of staffing. That is because the increased cost from the first year carries forward into the second year and then is increased again. In past years, the legislature has recognized these expense dynamics and appropriated more funding in the second year of the biennium than in the first year. That was not the case this year.

Table 1

**Minnesota State Colleges and Universities
2016-2017 Structural Funding Gap
(\$ in millions)**

	FY2016	FY2017	Total
State Appropriation and Tuition Support			
State Appropriation and Tuition Support	50.0	50.0	100.0
University (Tuition Revenue)	12.7	12.7	25.4
College (Tuition Revenue)		(4.3)	(4.3)
Total State Appropriation and Tuition Support	62.7	58.4	121.1
Estimated Expenses			
Compensation (@ 3%)	36.0	72.0	108.0
Other Operating Costs (@ 3%)	11.0	23.0	34.0
Total Estimated Expenses	47.0	95.0	142.0
Revenues over/(under) estimated expenses	15.7	(36.6)	(20.9)
Gap as a Percent of Revenue	25%	-63%	-17%

Revenue Trends

State appropriation and tuition are the two primary revenue sources for Minnesota State Colleges and Universities, accounting for 93 percent of general fund revenues. The level of state funding for the system is driven by the state’s economic and budget outlook as well as public support for public higher education in general and support for Minnesota State Colleges and Universities in particular. Tuition revenue is driven by enrollment and tuition rates. This section of the report examines key revenue trends over the past fifteen years.

The relationship between state funding and tuition moves closer to 50:50 goal

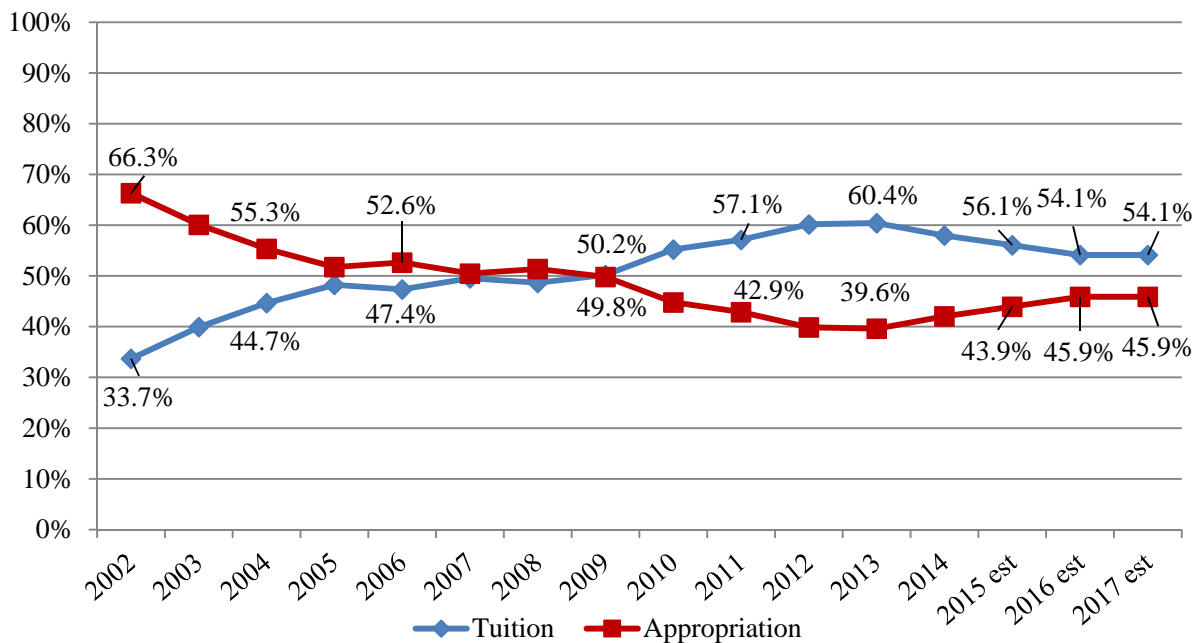
The relationship between state appropriation and tuition revenue is a key budget metric. As Graph 1 illustrates, that relationship has fluctuated significantly over the past 15 years. During the recessionary years, state funding was cut, tuition rates were increased to partially offset the cuts, and enrollment increased, resulting in a shift from state support to tuition. Recent state investments in higher education have reversed that trend, but the relationship is far from the two-thirds state support/one-third tuition relationship experienced when the system was first formed and continuing through the early 2000s.

The system’s biennial budget request was designed to move that relationship closer to 50:50, with equal parts of revenue provided by state appropriation and tuition.

- While not achieving the 50:50 goal, the gap between the state appropriation and tuition sources has narrowed to 46:54.
- In fiscal year 2016, state appropriation is projected to account for 45.9 percent of total state appropriation and tuition revenue, up from 39.6 percent in fiscal year 2013. Tuition revenue is expected to fall from 60.4 percent to 54.1 percent over the same period.

Graph 1

**Minnesota State Colleges and Universities
State Appropriation Tuition Relationship
Fiscal Years 2002-2017**



State appropriation and tuition per FYE student increasing, but at a slower rate

Another key budget metric is state appropriation and tuition revenue per student, adjusted for inflation. This measure allows the per student revenue to be compared over time.

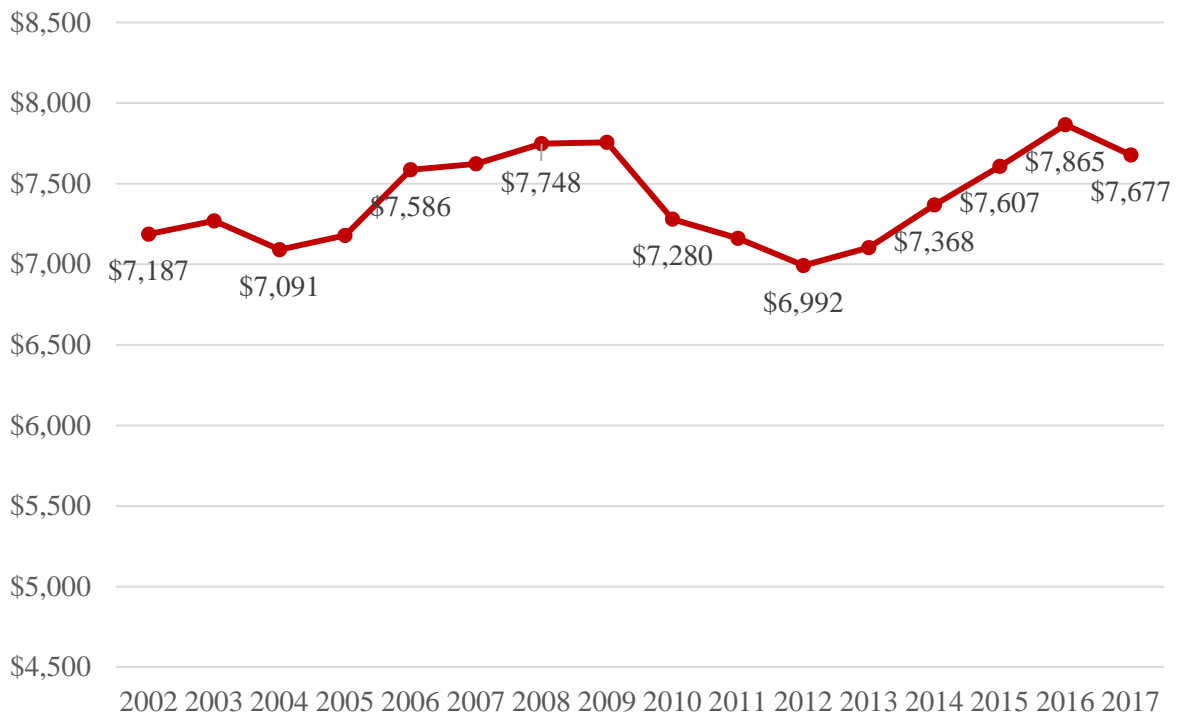
- Per student state appropriation and tuition revenue is expected to increase for the fourth consecutive year.
- Revenue per FYE has increased from \$6,992 in fiscal year 2012 to a projected \$7,865 in fiscal year 2016, an increase of 12.5 percent. Per FYE revenue is slightly higher (1.4 percent) than it was in fiscal year 2009.

- Per student tuition and state appropriation revenue has increased in inflation-adjusted dollars, but at a slower rate than per student state funding, reflecting efforts to minimize tuition rate increases while increasing state support.

Graph 2 shows the changes in per FYE state appropriation and tuition revenue since 2002.

Graph 2

**Minnesota State Colleges and Universities
State Appropriation and Tuition Revenue per FYE
Inflation-Adjusted Dollars*
Fiscal Years 2002-2017**



**Adjusted per CPI-U*

FYE enrollment expected to decline but at a slower rate

Full year equivalent enrollment is one of the system’s most closely monitored budget measures. FYE enrollment drives tuition revenue, and relatively small changes in enrollment can have significant budget implications.

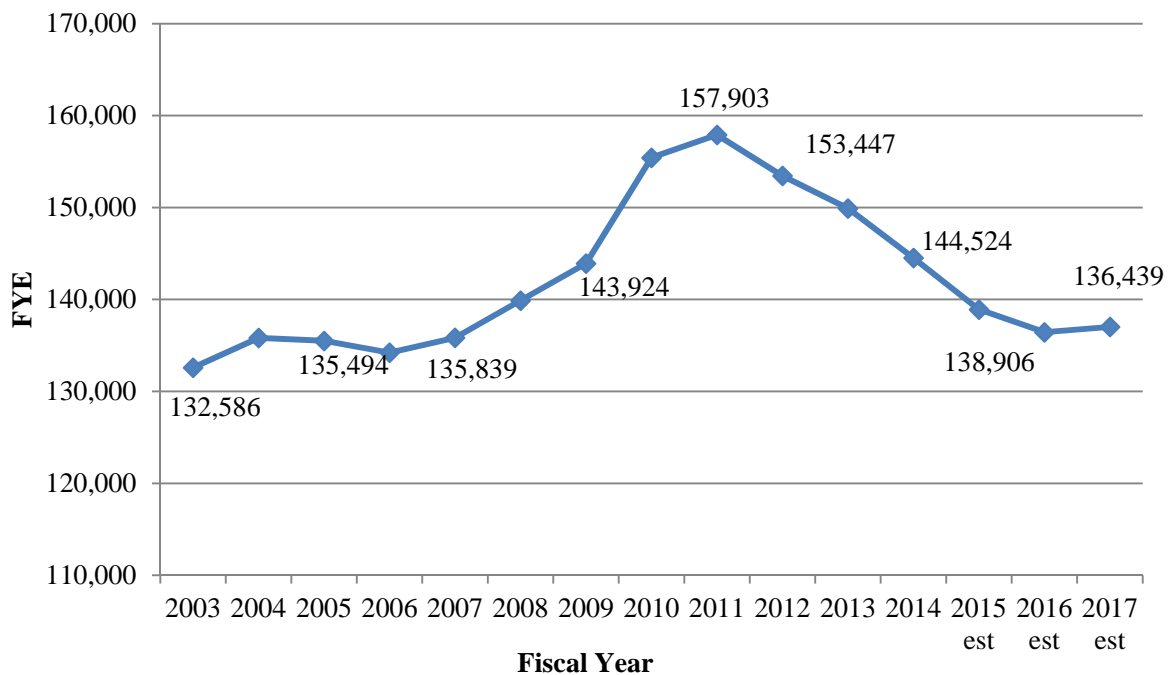
- FYE enrollment is expected to decline by 1.8 percent in fiscal year 2016 from prior year levels, 2.5 percent at colleges and 0.7 percent at universities. In fiscal year 2015 FYE enrollment is expected to fall by 3.9 percent, 4.7 percent in colleges and 2.5 percent at universities from fiscal year 2014 levels.

- FYE enrollment is returning to pre-recession levels; fiscal year 2016 enrollment is projected to be slightly higher than fiscal year 2007 enrollment.
- Improving enrollment forecasts is a priority for the entire system. Improvements in modeling and reporting are being made to better understand and anticipate enrollment changes.

Graph 3 shows the actual and projected FYE from fiscal year 2003 to fiscal year 2017.

Graph 3

**Minnesota State Colleges and Universities
FYE Enrollment Returning to Pre-Recession Levels
Fiscal Years 2003-2017**



NET COST OF EDUCATION ANALYSIS

A student’s total cost of attending a MnSCU college or university includes tuition, fees, room and board, books, supplies, transportation, and miscellaneous expenses. The net cost of attendance is the amount a student pays after financial aid grants are subtracted from the total cost of attendance. The net cost varies depending on a student’s full- or part-time status, college or university of attendance, academic program choice, and financial aid award.

Financial Aid Analysis

Need-based financial aid programs help bridge the gap between the cost of attendance and the expected family contribution, a calculation based upon family income and circumstances.

Financial Aid Highlights:

- In fiscal year 2014, the most recent year financial data is available, undergraduate students enrolled in Minnesota State Colleges and Universities received \$1.26 billion in financial aid. The majority of the financial aid was provided in the form of grants (\$435 million or 35 percent) and loans (\$760 million or 60 percent).
- Federally-funded financial aid accounts for 81 percent of the aid received by students; state-funded financial aid accounts for 11 percent.
- Almost two-thirds of the undergraduate students attending Minnesota State Colleges and Universities receive some form of financial aid. In fiscal year 2014, 61 percent of undergraduate students enrolled at state colleges and 65 percent of undergraduate students enrolled at state universities received one or more financial aid awards, including loans that were accounted for in the system's financial aid module.
- Of those undergraduate students who received financial aid, the average award was \$7,024 for college students and \$9,951 for university students.

Change in State and Federal Grant Programs

There were two notable changes in state and federal grant programs that will impact grant aid for MnSCU students in fiscal year 2016.

- *Increase in the living and miscellaneous expense allowance for state grant recipients:* Students' cost of attendance in the state grant program includes tuition, fees and a living and miscellaneous expense allowance (LME). The LME allowance will increase from \$8,490 to \$8,828. The net impact of this change will be to increase the average size of state grants for recipients, with a maximum increase of \$169.
- *Increase in Pell grants:* The maximum federal Pell grant will increase by \$45 from \$5,730 to \$5,775 in fiscal year 2016. The net impact of this change will be to increase the average size of Pell grants for recipients.

Estimated Change in Student Tuition Cost

The estimated net impact of the proposed tuition rates and changes in state and federal Pell grants for undergraduate students are reported by income category in Table 2 for colleges and universities.

Table 2

**Minnesota State Colleges and Universities
Estimated Change in Student Tuition Cost by Income
Degree-Seeking Undergraduate Students
Fiscal Year 2016**

State Colleges

<i>All Recipients</i>	<i>State Grant Recipients (% Change)</i>	<i>Change in Student Tuition Cost</i>
Less Than \$20,000	20,062 (10%)	-\$282
\$20,000 to \$39,999	12,582 (9%)	-\$250
\$40,000 to \$59,999	5,492 (16%)	-\$185
\$60,000 and Above	2,744 (24%)	-\$110
All Recipients	40,881 (12%)	-\$231
Non-State Grant Recipients	88,095	\$0

State Universities

<i>All Recipients</i>	<i>State Grant Recipients (% Change)</i>	<i>Change in Student Tuition Cost</i>
Less Than \$20,000	4,800 (4%)	-\$129
\$20,000 to \$39,999	4,132 (2%)	-\$160
\$40,000 to \$59,999	3,005 (3%)	-\$145
\$60,000 and Above	2,886 (15%)	\$54
All Recipients	14,823 (5%)	-\$58
Non-State Grant Recipients	43,148	\$233

The estimates of changes in state and Pell grants are based on simulations that were prepared by staff of the Minnesota Office of Higher Education.

- Change in student tuition cost equals the change in full-time tuition (no change at state colleges and 3.3 percent increase at state universities) and the projected increase in average state and Pell grants.
- The change in average state and Pell grants is based on projections of fiscal year 2016 awards that incorporate all changes in the state and federal programs compared to projections of fiscal year 2016 awards prior to those changes.

Key findings:

- More college students (4,247) and university (738) students are projected to receive state grants in fiscal year 2016 as a result of the changes in the state grant program.

- State grant recipients in all income categories at the colleges and in all except the top income category at the universities are projected to experience net decreases in student tuition cost in fiscal year 2016.
- The net decreases in student tuition cost range from \$110 for college recipients in the \$60,000 and above income category to \$282 for college recipients in the less than \$20,000 income category. State university students in the \$60,000 and above income category are projected to have an increase in student tuition of \$54.

Estimated Net Student Tuition Cost

Tuition charges paid by the student are lower when state and Pell grants are taken into account. Table 3 shows the estimated net tuition rate for full-time college and university students based on their income and average projected state and federal grant award. For purposes of this analysis, the average state and Pell grants for each income category were applied against the proposed full-time tuition costs to arrive at the estimated net student tuition cost.

Table 3

**Minnesota State Colleges and Universities
Estimated Net Student Tuition Cost in Fiscal Year 2016
2015-16 Tuition Rate for Full-Time Students
Less Estimated State and Pell Grants**

State Colleges

<i>Income Levels for State Grant Recipients</i>	<i>Average 2015-2016 Student Tuition Cost</i>
Less than \$20,000	\$525
\$20,000 to \$39,999	\$1,075
\$40,000 to \$59,999	\$1,742
\$60,000 and above	\$2,903
Average for all state grant recipients	\$1,017
Non-state grant recipients	\$4,816

State Universities

<i>Income Levels for State Grant Recipients</i>	<i>Average 2015-2016 Student Tuition Cost</i>
Less than \$20,000	\$841
\$20,000 to \$39,999	\$1,409
\$40,000 to \$59,999	\$2,869
\$60,000 and above	\$4,653
Average for all state grant recipients	\$2,153
Non-state grant recipients	\$7,016

Key findings:

- For undergraduate students receiving state and Pell grants and attending a state college, the estimated average annual tuition cost is \$1,017.
- For undergraduate students receiving state and Pell grants and attending a state university, the estimated average annual tuition cost is \$2,153.

PROPOSED FISCAL YEAR 2016 OPERATING BUDGET

Fiscal Year 2016 Proposed All Funds Operating Budget

The system’s operating budget is composed of the individual operating budgets of the colleges, universities, and system office. The all funds budget encompasses all aspects of the educational enterprise: instruction, student life, technology, research, community service, administration, physical plant and residential life programs.

Tuition and state appropriation are the system’s two primary sources of revenue. Other revenue sources include fees, auxiliary/enterprise income and grants. The largest expense category is compensation which accounts for approximately two-thirds of the all funds expenditure budget. The proposed fiscal year 2016 all funds operating budget is shown in Table 4.

Table 4

**Minnesota State Colleges and Universities
Fiscal Year 2016 All-Funds Proposed Budget
(Net of Scholarship Allowance)
(\$ in millions)**

	FY2015 Current Budget	FY2016 Proposed Budget	\$ Change	% Change
Revenues	\$1,914.5	\$1,933.5	\$19.0	1.0%
Expenses	\$1,903.5	\$1,922.6	\$19.1	1.0%
Budget balance	\$11.0	\$ 10.9		

Fiscal Year 2016 All Funds Operating Budget Highlights:

- The proposed fiscal year 2016 all funds budget includes \$1.9 billion in projected revenues and expenditures. An increase of \$10.9 million to the budgetary fund balance is projected.
- Fiscal year 2016 revenues are projected to increase by \$19 million (1.0 percent) to \$1.9 billion, compared to prior year revenues.
- Expenses in fiscal year 2016 are projected to increase by \$19.1 million (1.0 percent) over the prior year expenditures.

- A small increase to the all funds budgetary fund balance of \$10.9 million is projected for fiscal year 2016, accounting for 0.6 percent of total revenue.
- Colleges and universities plan to use \$6.3 million of fund balance in fiscal year 2016, equivalent to 0.3 percent of total revenue and consistent with the use of \$24.2 million in fund balance in fiscal year 2015.

The all funds budget is shown net of the scholarship allowance. Approximately 90 percent (\$351 million) of an estimated \$389 million of financial aid revenue is recognized as revenue used to pay student obligations (tuition, fees, room and board, and sales and services) with the balance (\$38 million) reflecting the net financial aid payments to students for living expenses.

Overall, the updated fiscal year 2015 operating budget is \$10 million less than the budget approved by the board a year ago. The most significant difference is the nearly \$30 million reduction in tuition revenue as a result of lower than projected enrollment. The shortfall created by declining tuition revenue was made up by \$15 million in expenditure reductions, \$11 million of additional use of carryforward, and increases in other revenues. The \$10 million difference overall represents 0.5 percent of total revenue.

Fiscal Year 2016 Proposed General Fund Budget

The largest component of the all funds budget is the general fund. General fund revenues and expenses account for approximately 80 percent of the all funds budget. The proposed general fund budget is shown in Table 5.

Table 5

**Minnesota State Colleges and Universities
Fiscal Year 2016 General Fund Proposed Budget
(\$ in millions)**

	FY 2015 Current Budget	FY2016 Proposed Budget	\$ Change	% Change
Revenues				
State appropriation	\$622.1	\$672.9	\$50.8	8.2%
Tuition	\$781.7	\$778.1	(\$3.6)	-0.5%
Other revenues	\$113.3	\$109.8	(\$3.5)	-3.1%
Programmed fund balance	\$21.1	\$4.1	(\$17.0)	-80.4%
Total budgeted revenues	\$1,538.2	\$1,564.9	\$26.7	1.7%
Expenses				
Compensation	\$1,150.4	\$1,166.9	\$16.5	1.4%
Other operating costs	\$380.9	\$391.0	\$10.1	2.7%
Total budgeted expenses	\$1,531.3	\$1,557.9	\$26.6	1.7%
Budget balance	\$6.9	\$7.0		

Fiscal Year 2016 General Fund Operating Budget Highlights:

- The proposed fiscal year 2016 general fund budget includes \$1.56 billion in projected revenues and expenditures.
- General fund revenues are projected to grow by \$26.7 million or 1.7 percent. The tuition freeze combined with anticipated enrollment declines accounts for the loss of tuition revenue.
- General fund expenses are projected to grow by \$26.6 million or 1.7 percent in fiscal year 2016. Compensation is expected to increase by \$16.5 million or 1.4 percent. This change reflects anticipated compensation increases of three percent and staff reductions due to the change in enrollment. Other operating expenses are expected to increase by 2.7 percent in fiscal year 2016.
- The changes in the forecasted general fund revenues compared to expenses results in a slight budgetary balance of \$7 million after the use of \$4.1 million in programmed fund balance.
- Information about the distribution of state appropriation was included in the May 2015 board materials. That information has been included in the supplemental materials (SP-5) for your reference.

Student Fee Increases Limited

Mandatory and optional fees are charged to students pursuant to Board Policy 5.11. Each year, the Board of Trustees is asked to review and approve the overall tuition and fee structure. Individual fees are not subject to annual Board approval; rather, the Board of Trustees sets maximum fee rates that colleges and universities cannot exceed when charging students. Board action is not required unless colleges and universities want to adjust the maximum rates.

In fiscal year 2015, at the request of State Cloud State University students and campus leadership, the board approved a student life fee rate of \$117.36 for the university. The chancellor is recommending continuation of this rate in fiscal year 2016.

To further constrain fee increases, colleges and universities were asked to limit their fee increases to no more than three percent in aggregate, with limited exceptions for new and/or required fees. This restriction gives colleges and universities the ability to cover increased costs and enrollment-driven funding shortfalls, while holding down the overall cost of education for students. Additional information on proposed fees is found in the supplemental budget (SP-2).

Health Services Funding

State statute 136F.20 requires universities and colleges that charge a health services fee to report annually to the board on the health service fees. Currently, six universities and nine

colleges offer some form of health services to students. Metropolitan State University and North Hennepin Community College have proposed offering these services beginning in fiscal year 2016. The detail reporting of this information by college and university is found in the supplemental materials (SP-9).

REVENUE FUND OUTLOOK

The Board of Trustees maintains statutory oversight of the revenue fund, including fee approvals. Revenue fund fees support the operations of revenue fund facilities, such as residence halls, dining services, student unions, health/wellness centers, parking and other revenue-generating facilities. Revenue fund fees are charged to generate sufficient revenue to pay debt service, operate, equip, maintain, and repair revenue fund facilities.

Average room and board rates for fiscal year 2016 will be \$7,761 for a traditional double occupancy room with the most commonly chosen meal plan. The increase from last fiscal year will amount to an additional \$406 or 5.5 percent. Student union and wellness facility fees will increase very slightly from last year's rates. Student union rates will increase 0.7 percent to \$248.47 per academic year, and wellness center facility fees are increasing 1.66 percent to \$125.60 per academic year.

Of note, the Metropolitan State Parking Ramp and Student Union will be completed and open during fiscal year 2016 and the campus will now charge the full rate for each facility, consistent with their financial plans for the projects. Previously, Metropolitan State had committed to their students to defer the full parking and student union rates until the buildings were open for operation.

The list of fees the board is asked to approve is found in Attachments 2A – 2E. Additional information about the revenue fund is included in the supplemental materials (SP-10).

RESERVES

Board Policy 5.10 and Procedure 5.10.1 set requirements for designated cash reserve levels. The policy requires colleges and universities to maintain general fund cash reserves in the range of five to seven percent of general fund cash-basis operating revenues through designation as a special reserve amount. In addition, the policy allows the system as a whole to maintain a reserve up to two percent of the total state appropriation.

Colleges and universities are projecting reserve levels totaling \$97.3 million at the end of fiscal year 2016, which represents approximately 6.6 percent of general fund revenues. The system's reserve level is projected to be at \$10.5 million (less than one percent of general operating revenue) at the end of fiscal year 2015, with no plans to increase/decrease during fiscal year 2016. During fiscal year 2015, \$25,000 of system reserves were used to support the Bemidji State University and Northwest Technical College reorganization efforts with funds matched locally.

Reserve levels for each college and university are found in the supplemental materials (SP-12).

REALLOCATIONS

Reallocation is the reprogramming of base funding from one purpose to another in order to invest in higher priority activities or balance the budget. Reallocation is an on-going budget management strategy used by colleges, universities and the system office to optimize the use of scarce resources. An example of reallocation would be eliminating a position in a low-demand, low-enrollment program in order to add a position in a high-demand, high enrollment program. It is financial management tool that allows the system to innovate and respond to emerging needs in a tight budget environment.

More recently, reallocation targets have been set by the legislature as part of the system's performance funding goals. In April 2016, the system will be asked to report on reallocations made in fiscal year 2016. To meet the goal, \$22 million in costs will have to be reallocated. The legislature asked the board to redirect funds to direct mission activities, to stem growth in tuition and student fees, and to fund programs that benefit students. In fiscal year 2014, the system was asked to reallocate \$22 million and reported \$29.3 million in reallocations.

As part of their annual reporting, colleges and universities reported \$43.4 million in reallocations for fiscal year 2015 and have preliminary identified \$36.0 million for fiscal year 2016. In fiscal year 2015, \$32.9 million of the \$43.4 million in reallocations were used to balance budgets.

STUDENT CONSULTATION PROCESS

As reported at the May board meeting, colleges and universities have been discussing the fiscal year 2016 budget with campus constituents for several months, and the chancellor has consulted regularly with statewide student leaders to monitor the campus-level consultation process. Since the May board meeting, university presidents and their leadership teams have consulted with campus student leaders and bargaining units to discuss proposed increases in the fiscal year 2016 tuition rates. The chancellor has also spoken with both statewide student associations and the statewide bargaining units about the proposed university tuition rates.

University student leaders generally expressed support for the proposed tuition increase and were satisfied with the consultation process that occurred over the past few weeks and throughout the past year.

Letters documenting the student consultative process, including the additional consultation that occurred over the past several weeks, are posted on the MnSCU website (link below.) A summary of student consultation by college and university is provided in the supplemental materials (SP-13).

<http://www.finance.mnscu.edu/budget/operating/index.html>

TUITION WAIVER REQUEST

As part of the fiscal year 2016 operating budget, the Board is being asked to waive tuition for the first cohort (up to 25 students) enrolled in Northland Community and Technical College's Precision Agriculture Equipment Technician (PAET) program, in accordance with Board policy 5.12. NCTC is requesting the waiver of tuition for fall and spring semester of the 2015-2016 and 2016-2017 academic years for the first cohort. Additional information about the waiver request is provided in the supplement materials (SP-14).

FINANCIAL RECOVERY PLAN STATUS UPDATE

The eleven colleges and universities that are operating under financial recovery plans (FRP) continue to make progress in implementing their plans. Colleges and universities have cut expenses, continue to set aside funds to offset depreciation expenses, and are meeting the objectives outlined in their plans. Spending reductions implemented in fiscal year 2015 will continue into fiscal year 2016 and help improve financial performance and CFI scores. A one-time unanticipated expense has caused one college to fall short of its FRP goal for fiscal year 2015.

Colleges and universities continue to face a challenging financial environment and have identified enrollment and compensation/contract settlements as the two greatest risks to successful implementation of their plans. Increased state funding and the ability of universities to raise tuition rates has mitigated some of this risk and positioned the colleges and universities to meet their FRP objectives in fiscal year 2016. However, colleges and universities must adhere to their spending reduction plans to achieve long-term financial stability.

The structural funding problem caused by the equal allocation of state funds each year of the biennium combined with a tuition reduction for colleges and a tuition freeze for universities in fiscal year 2017 creates a significant risk to colleges and universities operating under financial recovery plans. Colleges and universities are aware of this risk and are incorporating this information into their financial planning.

LEARNING NETWORK OF MINNESOTA

Since fiscal year 2010, the Minnesota legislature has appropriated funding to Minnesota State Colleges and Universities for the Learning Network of Minnesota. The Learning Network of Minnesota is the core telecommunications network infrastructure that supports public higher education in Minnesota and is critical for daily campus and system operations.

In compliance with board policy 5.14, the board is asked to authorize the chancellor or his designee to enter into a contract with the Learning Network of Minnesota to provide the legislatively authorized funding. The legislature appropriated \$4.115 million in fiscal year 2016 and \$4.115 million in fiscal year 2017 for the Learning Network.

Additional information on the Learning Network of Minnesota is included in the supplemental materials (SP-15).

CONCLUSION

The proposed fiscal year 2016 all funds operating budget is designed to advance the strategic framework and to implement the goals outlined in the biennial budget request: protect affordability, protect programs, and provide the faculty and staff needed to deliver those programs. The budget totals \$1.9 billion, one percent more than in fiscal year 2015. It includes \$672.9 million in state appropriation and \$778.1 million in tuition revenue.

Tuition at state colleges will be frozen at fiscal year 2013 rates. Tuition at state universities will increase by an average of \$233 for a full-time undergraduate student and \$265 for a full-time graduate student. This will be the first increase in university undergraduate tuition rates since 2013. University tuition rates will be frozen again in fiscal year 2017 at fiscal year 2016 rates, and college tuition rates will be reduced by one percent.

The increase in state funding will help fund inflationary increases at both colleges and universities and will replace foregone tuition revenue resulting from the college tuition freeze. However, colleges and universities will continue to reallocate and reduce expenditures in their on-going efforts to adjust to lower enrollment and to offset the structural funding issues the system will face in fiscal year 2017.

RECOMMENDED COMMITTEE MOTION:

The Finance and Facilities Committee recommends that the Board of Trustees adopt the following motion:

- a. Adopt the annual total operating budget for fiscal year 2016 as shown in Table 4. Pursuant to Board Policy 5.9, the Board of Trustees will be periodically provided systemwide budget updates for all funding sources on an exception reporting basis.
- b. Approve the proposed tuition structure recommendations for fiscal year 2016 as detailed in Attachments 1A through 1E.
- c. Tuition increases are effective summer term or fall term 2015 at the discretion of the president. The chancellor is authorized to approve any required technical adjustments, and is requested to incorporate any approvals at the time fiscal year 2017 tuition recommendations are presented to the Board of Trustees.
- d. The Board of Trustees continues the policy of market-driven tuition for closed enrollment courses, customized training, and non-credit instruction, continuing education, and contract postsecondary enrollment option programs.
- e. Approve the Revenue Fund and related fiscal year 2016 fees for room and board, student union, wellness and recreation facilities, and parking ramps/surface lots as detailed in Attachments 2A through 2D, including any housing fees that the campuses may charge for occupancy outside the academic year. Approve the fiscal year 2016 fees structure for room and board for colleges who either own or manage student housing as detailed in Attachment 2E. The chancellor is authorized to approve fee structures for any new revenue fund programs as well as any technical adjustments, and is requested to incorporate any approvals at the time fiscal year 2017 recommendations are presented to the Board of Trustees.
- f. Approve a tuition waiver for courses in Northland Community and Technical College's Precision Agriculture Equipment Technician two-year program for the first cohort of students (up to 25) for fall and spring semester of the 2015-2016 and 2016-2017 academic years.
- g. Approve Student Life/Activity fee (\$117.36 per term) for St. Cloud State University.
- h. Authorize the chancellor or his designee to enter into an agreement with the Learning Network of Minnesota to provide the funding appropriated to the organization in Minnesota Laws Chapter 69, Article 1, Section 4, Subdivision 4, in the amount of \$4,115,000.

RECOMMENDED BOARD OF TRUSTEES MOTION:

- a. Adopt the annual total operating budget for fiscal year 2016 as shown in Table 4. Pursuant to Board Policy 5.9, the Board of Trustees will be periodically provided systemwide budget updates for all funding sources on an exception reporting basis.
- b. Approve the proposed tuition structure recommendations for fiscal year 2016 as detailed in Attachments 1A through 1E.
- c. Tuition increases are effective summer term or fall term 2016 at the discretion of the president. The chancellor is authorized to approve any required technical adjustments, and is requested to incorporate any approvals at the time fiscal year 2016 tuition recommendations are presented to the Board of Trustees.
- d. The Board of Trustees continues the policy of market-driven tuition for closed enrollment courses, customized training, and non-credit instruction, continuing education, and contract postsecondary enrollment option programs.
- e. Approve the Revenue Fund and related fiscal year 2016 fees for room and board, student union, wellness and recreation facilities, and parking ramps/surface lots as detailed in Attachments 2A through 2D, including any housing fees that the campuses may charge for occupancy outside the academic year. Approve the fiscal year 2016 fees structure for room and board for colleges who either own or manage student housing as detailed in Attachment 2E. The chancellor is authorized to approve fee structures for any new revenue fund programs as well as any technical adjustments, and is requested to incorporate any approvals at the time fiscal year 2017 recommendations are presented to the Board of Trustees.
- f. Approve a tuition waiver for courses in Northland Community and Technical College's Precision Agriculture Equipment Technician two-year program for the first cohort of students (up to 25) for fall and spring semester of the 2015-2016 and 2016-2017 academic years.
- g. Approve Student Life/Activity fee (\$117.36 per term) for St. Cloud State University.
- h. Authorize the chancellor or his designee to enter into an agreement with the Learning Network of Minnesota to provide the funding appropriated to the organization in Minnesota Laws Chapter 69, Article 1, Section 4, Subdivision 4, in the amount of \$4,115,000.

Date Presented to the Board of Trustees: June 17, 2015

Attachments

Proposed Tuition Rates, Revenue Fund Fees and Student Housing Charges

- 1-A Resident Undergraduate Tuition Rates for FY2016
- 1-B Resident Undergraduate Banded Tuition Rates for FY2016
- 1-C Resident Graduate Tuition Rates for FY2016
- 1-D Program and Course Tuition Rates for FY2016
- 1-E Non-resident Tuition Rates for FY2016
- 2-A Room and Board Fees FY2016
- 2-B Student Union Facility Fees FY2016
- 2-C Wellness Facility Fees FY2016
- 2-D Parking Facility Fees FY2016
- 2-E Student Housing (college/university owned or managed)

Minnesota State Colleges and Universities
Resident Undergraduate (UG) Tuition Rates for FY2016

Institution	FY2015 Tuition Rate Per Credit	FY2016 \$ Increase Per Credit	FY2016 Tuition Rate Per Credit	FY2016 Annual Change (30 credits)
-------------	---	-------------------------------------	---	---

STATE COLLEGES				
Alexandria Technical & Community College	160.55	0.00	160.55	0.00
Anoka-Ramsey Community College	144.96	0.00	144.96	0.00
Anoka Technical College	166.99	0.00	166.99	0.00
Central Lakes College	159.10	0.00	159.10	0.00
Century College	160.60	0.00	160.60	0.00
Dakota County Technical College	168.95	0.00	168.95	0.00
Fond du Lac Tribal & Community College	158.90	0.00	158.90	0.00
Hennepin Technical College	156.70	0.00	156.70	0.00
Inver Hills Community College	159.00	0.00	159.00	0.00
Lake Superior College	147.25	0.00	147.25	0.00
Minneapolis Community & Technical College	155.25	0.00	155.25	0.00
Minnesota State College-Southeast Technical	167.31	0.00	167.31	0.00
Minnesota State Community & Technical College	160.80	0.00	160.80	0.00
Minnesota West Community & Technical College	171.55	0.00	171.55	0.00
Normandale Community College	161.49	0.00	161.49	0.00
North Hennepin Community College	165.08	0.00	165.08	0.00
Northeast Higher Education District				
Hibbing Community College	157.62	0.00	157.62	0.00
Itasca Community College	157.62	0.00	157.62	0.00
Mesabi Range College	157.62	0.00	157.62	0.00
Rainy River Community College	157.62	0.00	157.62	0.00
Vermilion Community College	157.62	0.00	157.62	0.00
Northland Community & Technical College	165.00	0.00	165.00	0.00
Northwest Technical College (Bemidji)	173.00	0.00	173.00	0.00
Pine Technical and Community College	153.16	0.00	153.16	0.00
Ridgewater College	161.30	0.00	161.30	0.00
Riverland Community College	164.60	0.00	164.60	0.00
Rochester Community & Technical College	164.10	0.00	164.10	0.00
Saint Paul College	161.71	0.00	161.71	0.00
St. Cloud Technical & Community College	158.91	0.00	158.91	0.00
South Central College	161.20	0.00	161.20	0.00

STATE UNIVERSITIES				
Metropolitan State University	210.97	7.81	218.78	234.30
St. Cloud State University	219.45	7.90	227.35	237.00

**Minnesota State Colleges and Universities
Resident Undergraduate (UG) Banded Tuition Rates for FY2016**

Institution	Credits	FY2015 Banded Tuition Rate	FY2016 \$ Increase	FY2016 Banded Tuition Rate	FY2016 Annual Change (30 credits)
Bemidji State University	1-11	\$249.85	\$7.50	\$257.35	\$15.00
	12-18	\$3,572.50	\$107.50	\$3,680.00	\$215.00
	19+	\$3,572.50+\$249.85/credit		3680+257.35/credit	
Minnesota State	1-11	\$222.43	\$7.82	\$230.25	
University Moorhead	12-19	\$3,449.00	\$118.50	\$3,567.50	\$237.00
	20+	\$3,449+\$222.43/credit		\$3,567.50+\$230.25/credit	
Minnesota State University,	1-11	\$262.34	\$9.32	\$271.66	
Mankato (Non-Twin Cities Locations Only)	12-18	\$3,333.79	\$118.50	\$3,452.29	\$237.00
	19+	\$3,333.79+\$320/credit		\$3,452.29+\$320/credit	
Southwest Minnesota	1-11	\$226.20	\$7.80	\$234.00	
State University	12-18	\$3,492.90	\$118.50	\$3,611.40	\$237.00
	19+	\$3,492.90+\$226.20/credit		3611.40 plus 234/credit	
Winona State University	1-11	\$227.00	\$7.85	\$234.85	
	12-18	\$3,433.00	\$118.50	\$3,551.50	\$237.00
	19+	\$3,433+\$227/credit		\$3,551.50+234.85/credit	

**Minnesota State Colleges and Universities
Resident Graduate (GR) Tuition Rates for FY2016**

Institution	FY2015 TUITION RATE PER CREDIT	FY2016 \$ INCREASE PER CREDIT	FY2016 TUITION RATE PER CREDIT	FY2016 Annual Impact on a Full Time Student (20 credits)
Masters				
Bemidji State University	\$376.75	\$11.30	\$388.05	\$226.00
Metropolitan State University	\$346.42	\$12.82	\$359.24	\$256.40
Minnesota State University Moorhead	\$347.00	\$13.00	\$360.00	\$260.00
Minnesota State University, Mankato	\$365.95	\$14.55	\$380.50	\$291.00
Southwest Minnesota State University	\$368.50	\$14.00	\$382.50	\$280.00
St. Cloud State University	\$355.08	\$13.58	\$368.66	\$271.60
Winona State University	\$359.93	\$13.67	\$373.60	\$273.40

Institution/Program	FY2015 TUITION RATE PER CREDIT	FY2016 \$ INCREASE PER CREDIT	FY2016 TUITION RATE PER CREDIT	FY2016 Annual Impact on a Full Time Student (20 credits)
----------------------------	---	--	---	---

Doctoral				
Metropolitan State University - Nursing (DNP)	\$857.51	\$31.73	\$889.24	\$634.60
Metropolitan State University - College of Mgmt. (DBA)	\$891.77	\$33.00	\$924.77	\$660.00
Minnesota State University, Mankato - Nursing (DNP)	\$859.50	\$34.20	\$893.70	\$684.00
Minnesota State University, Mankato - Nursing (DNP) - Twin Cities Locations	\$909.50	\$36.00	\$945.50	\$720.00
Minnesota State University, Mankato - Psychology (Psy D)	\$531.25	\$21.15	\$552.40	\$423.00
Minnesota State University, Mankato - Psychology (Psy D) - Twin Cities Locations	\$581.25	\$22.95	\$604.20	\$459.00
Minnesota State University, Mankato - Education (CSP)	\$531.25	\$21.15	\$552.40	\$423.00
Minnesota State University, Mankato - Ed Ldrship - Twin Cities Locations	\$581.25	\$22.95	\$604.20	\$459.00
Minnesota State University, Mankato - Ed Ldrship	\$531.25	\$21.15	\$552.40	\$423.00
Minnesota State University, Mankato - Ed Ldrship - Twin Cities Locations	\$581.25	\$22.95	\$604.20	\$459.00
St. Cloud State University - Education, Administration and Leadership (St Cloud Campus)	\$556.20	\$21.91	\$578.11	\$438.29
St. Cloud State University - Education, Administration and Leadership (Maple Grove Campus)	\$636.54	\$25.08	\$661.62	\$501.59
St. Cloud State University-Education, Higher Education (St Cloud Campus)	\$556.20	\$21.91	\$578.11	\$438.29
St. Cloud State University-Education, Higher Education (Maple Grove Campus)	\$636.54	\$25.08	\$661.62	\$501.59
Winona State University - Nursing (DNP)	\$670.00	\$25.46	\$695.46	\$509.20

**Minnesota State Colleges and Universities
Program and Course Tuition Rates for FY2016**

Institution	Program/Course Name	FY2015 Tuition Rate Per Credit	FY2016 \$ Increase Per Credit	FY2016 Tuition Rate Per Credit
PROGRAMS:				
Alexandria Technical & Community College	Law Enforcement Skills	214.77		214.77
Alexandria Technical & Community College	Law Enforcement Skills - SCSU	225.14		225.14
Alexandria Technical & Community College	Online	199.00		199.00
Anoka-Ramsey Community College	Nursing	186.43		186.43
Anoka-Ramsey Community College	Online Media Code 03	182.77		182.77
Anoka Technical College	Judicial Reporting/Broadcast Captioning AAS	266.56		266.56
Anoka Technical College	Surgical Technologist	208.59		208.59
Anoka Technical College	LPN	187.79		187.79
Anoka Technical College	Welding	187.79		187.79
Anoka Technical College	Online	182.00		182.00
Bemidji State University	Nursing (NRSG)	274.85	7.50	282.35
Bemidji State University	Tech Studies: Off- Campus and On-Line (TADT and TADD)	264.85	7.50	272.35
Bemidji State University	Tech Studies: On Campus (TADT)	274.85	7.50	282.35
Bemidji State University	Art and Design (TADD)	274.85	7.50	282.35
Bemidji State University	Mass Communications Department (MASC)	269.85	7.50	277.35
Bemidji State University	Music (MUSC)	264.85	7.50	272.35
Bemidji State University	Biology (BIOL)	264.85	7.50	272.35
Bemidji State University	Professional Education; Upper Division (ED)	263.85	7.50	271.35
Bemidji State University	360 Center of Excellence	199.00	(12.00)	187.00
Bemidji State University	Extended Learning Courses (off-campus or guided self-directed)	259.85	7.50	267.35
Bemidji State University	Online/Distance Courses	279.85	7.50	287.35
Bemidji State University	MBA program - Cohort #1	530.00		530.00
Bemidji State University	MBA program - Cohort #2	530.00	15.00	545.00
Bemidji State University	Camp Nursing Certificate	431.75	11.30	443.05
Central Lakes College	Horticulture and Landscape	179.10		179.10
Central Lakes College	Child Development	164.10		164.10
Central Lakes College	Dental Assistant	204.10		204.10
Central Lakes College	Occupational Skills	169.10		169.10
Central Lakes College	Medical Assistant	184.10		184.10
Central Lakes College	AD Nursing	194.10		194.10
Central Lakes College	Nursing Assistant	184.10		184.10
Central Lakes College	Practical Nursing	189.10		189.10
Central Lakes College	Criminal Justice	169.10		169.10
Central Lakes College	Automotive Technology	179.10		179.10
Central Lakes College	Communication Art & Design	184.10		184.10
Central Lakes College	Diesel Mechanics	194.10	(10.00)	184.10
Central Lakes College	Heavy Equipment	189.10	(5.00)	184.10
Central Lakes College	Machine Trades	174.10		174.10
Central Lakes College	Marine & Small Engines	179.10		179.10
Central Lakes College	Photo Imaging	179.10		179.10
Central Lakes College	Robotics	164.10		164.10
Central Lakes College	Videography	199.10		199.10
Central Lakes College	Welding	194.10		194.10

Institution	Program/Course Name	FY2015 Tuition Rate Per Credit	FY2016 \$ Increase Per Credit	FY2016 Tuition Rate Per Credit
Central Lakes College	Welding: Non-Destructive Testing	0.00	721.20	721.20
Central Lakes College	Online Courses	189.10		189.10
Central Lakes College	360 Center of Excellence	199.00	(12.00)	187.00
Central Lakes College	Farm Business Management	161.44		161.44
Century College	Online Courses	185.00		185.00
Century College	Nursing	194.85		194.85
Century College	Dental Assisting	184.65		184.65
Century College	Dental Hygiene	184.65		184.65
Century College	Orthotic Practitioner & Prosthetic Practitioner	184.65		184.65
Century College	Orthotic Technician & Prosthetic Technician	184.65		184.65
Dakota County Technical College	Heavy Construction Equipment Technology	173.95		173.95
Dakota County Technical College	Welding Technology	178.95		178.95
Dakota County Technical College	Medical Assisting	185.43		185.43
Dakota County Technical College	Manufacturing	182.69		182.69
Dakota County Technical College	Wood Finishing	244.90		244.90
Dakota County Technical College	Electrical Construction	175.95		175.95
Dakota County Technical College	Rail	292.69		292.69
Dakota County Technical College	Dental Assisting	188.33		188.33
Dakota County Technical College	Heavy Duty Truck Technology	173.95		173.95
Dakota County Technical College	Practical Nursing	205.98		205.98
Dakota County Technical College	Online & Hybrid courses	183.95		183.95
Fond du Lac Tribal & Community College	Nursing classes (clinical component)		215.00	215.00
Fond du Lac Tribal & Community College	Nursing classes (without clinical comp.)		200.00	200.00
Hennepin Technical College	Child Dev	158.70		158.70
Hennepin Technical College	Law Enforcement Skills	231.65		231.65
Hennepin Technical College	Audio	186.70		186.70
Hennepin Technical College	Online courses	172.80		172.80
Hennepin Technical College	360 Center of Excellence	199.00	(12.00)	187.00
Hibbing Community College	Law Enforcement Skills: On Campus	252.51		252.51
Hibbing Community College	Law Enforcement Skills: Off Campus- Brainerd/Worthington	282.08		282.08
Hibbing Community College	Law Enforcement Skills: Off Campus- Mankato	269.57		269.57
Hibbing Community College	Non-resident online courses	222.02		222.02

Institution	Program/Course Name	FY2015 Tuition Rate Per Credit	FY2016 \$ Increase Per Credit	FY2016 Tuition Rate Per Credit
Inver Hills Community College	Nursing	188.00		188.00
Inver Hills Community College	CNT - Lower Division	182.00		182.00
Inver Hills Community College	CNT - Upper Division	188.00		188.00
Inver Hills Community College	Education	160.00		160.00
Inver Hills Community College	Human Services	160.00		160.00
Inver Hills Community College	EMS	187.00		187.00
Inver Hills Community College	Online courses	169.00		169.00
Itasca Community College	Practical Nursing	180.79		180.79
Itasca Community College	Natural Resources	157.62		157.62
Itasca Community College	All courses offered via online (excluding any courses/programs with a differential tuition rate)	182.62		182.62
Itasca Community College	Non-resident online courses	222.02		222.02
Itasca Community College	Home Health Aid	180.79		180.79
Itasca Community College	Nursing Assistant	180.79		180.79
Lake Superior College	Architectural Drafting	168.05		168.05
Lake Superior College	Engineering CAD	168.05		168.05
Lake Superior College	Media Production	168.05		168.05
Lake Superior College	Building Construction	178.45		178.45
Lake Superior College	Civil Engineering Technology	178.45		178.45
Lake Superior College	Computer Information Systems	178.45		178.45
Lake Superior College	Commercial and Residential Wiring	178.45		178.45
Lake Superior College	Electronics/Industrial Controls	178.45		178.45
Lake Superior College	Truck Driving	178.45		178.45
Lake Superior College	Auto Body	188.85		188.85
Lake Superior College	Auto Service	188.85		188.85
Lake Superior College	Integrated Manufacturing	188.85		188.85
Lake Superior College	Machine Tool	188.85		188.85
Lake Superior College	Welding	188.85		188.85
Lake Superior College	Fire Technology	188.85		188.85
Lake Superior College	Massage Therapy	202.15		202.15
Lake Superior College	Nursing (NURS)	229.60		229.60
Lake Superior College	Physical Therapy Assistant	198.80		198.80
Lake Superior College	Practical Nursing (NUPN)	219.25		219.25
Lake Superior College	PN Mobility	214.85		214.85
Lake Superior College	Respiratory Care Practitioner	199.65		199.65
Lake Superior College	Dental Hygiene	208.35		208.35
Lake Superior College	Medical Assistant	194.05		194.05
Lake Superior College	Medical Laboratory Technician	194.05		194.05
Lake Superior College	Diagnostic Medical Sonography	209.65		209.65
Lake Superior College	Radiological Technician	202.55		202.55
Lake Superior College	Nursing Assistant 1420	221.15		221.15
Lake Superior College	Surgical Technician	203.75		203.75
Lake Superior College	All Online courses	184.07		184.07
Lake Superior College	360 Center of Excellence courses	199.00		199.00
Lake Superior College	ART1138	167.25		167.25
Lake Superior College	ART1305	167.25		167.25
Lake Superior College	ART2100	167.25		167.25
Lake Superior College	ART2139	167.25		167.25
Lake Superior College	ART2140	167.25		167.25
Lake Superior College	PTA2780	164.75		164.75

Institution	Program/Course Name	FY2015 Tuition Rate Per Credit	FY2016 \$ Increase Per Credit	FY2016 Tuition Rate Per Credit
Metropolitan State University	Law Enforcement Skills	416.64	15.42	432.05
Metropolitan State University	BSN Nursing program	275.82	10.21	286.02
Metropolitan State University	MSN Nursing program	449.34	16.63	465.97
Metropolitan State University	Online - Graduate	455.62	16.86	472.48
Metropolitan State University	Online - Undergraduate	281.63	10.42	292.05
Metropolitan State University	Wound, Ostomy, Continence MSN specialty track	577.60	(27.60)	550.00
Metropolitan State University	BS Dental Hygiene	275.82	10.21	286.02
Metropolitan State University	Oral Health Care Practitioner	449.34	16.63	465.97
Metropolitan State University	Prior Learning Assessments - UG credit	210.97	(79.72)	131.25
Metropolitan State University	Prior Learning Assessments - Grad. credit	346.42	(130.88)	215.54
Metropolitan State University	Student Designed Ind. Studies - UG	210.97	(57.84)	153.13
Metropolitan State University	Student Designed Ind. Studies - Grad.	346.42	(94.95)	251.47
Mesabi Range College	IMT Millwright - diploma	162.41		162.41
Mesabi Range College	IMT Millwright - AAS	162.41		162.41
Mesabi Range College	Welding (AWS Certification)	167.33		167.33
Mesabi Range College	Certified Nursing Assistant (off-campus)	205.95		205.95
Mesabi Range College	Graphic Arts	166.17		166.17
Mesabi Range College	Paramedic	170.06		170.06
Mesabi Range College	All resident courses offered via online (excluding any courses/programs with a differential tuition rate)	182.62		182.62
Mesabi Range College	Non-resident online courses	222.02		222.02
Mesabi Range College	Welding (off campus)	200.00		200.00
Mesabi Range College	IMT Millwright (off campus)	200.00		200.00
Minneapolis Community & Technical College	Weekend courses (regular)	116.45		116.45
Minneapolis Community & Technical College	Online Courses	179.60		179.60
Minneapolis Community & Technical College	Screen Writing	230.35		230.35
Minneapolis Community & Technical College	Screen Writing - weekend	172.80		172.80
Minneapolis Community & Technical College	Nursing	188.35		188.35
Minneapolis Community & Technical College	Nursing - weekend	141.30		141.30
Minneapolis Community & Technical College	Film and Video	230.35		230.35
Minneapolis Community & Technical College	Film and Video - weekend	172.80		172.80
Minneapolis Community & Technical College	Sound Arts	230.35		230.35
Minneapolis Community & Technical College	Sound Arts - weekend	172.80		172.80
Minneapolis Community & Technical College	Air Traffic Control	230.35		230.35
Minneapolis Community & Technical College	Air Traffic Control - weekend	172.80		172.80
Minneapolis Community & Technical College	360 Center of Excellence	199.00		199.00

Institution	Program/Course Name	FY2015 Tuition Rate Per Credit	FY2016 \$ Increase Per Credit	FY2016 Tuition Rate Per Credit
Minnesota State College-Southeast Technical	Truck Driving (TRDR)	207.31		207.31
Minnesota State College-Southeast Technical	Welding Technologies (WELD)	197.31		197.31
Minnesota State College-Southeast Technical	Machine Tool & Die (MTDM)	177.31		177.31
Minnesota State College-Southeast Technical	Auto Body Collision Technology (ABCT)	177.31		177.31
Minnesota State College-Southeast Technical	Automotive Technology (AUTO)	177.31		177.31
Minnesota State College-Southeast Technical	Heating,ventilation,Air Conditioning & refrigeration(HVAC)	177.31		177.31
Minnesota State College-Southeast Technical	Electronics Technology (ELEC)	177.31		177.31
Minnesota State College-Southeast Technical	Practical Nursing (HEAL)	187.31		187.31
Minnesota State College-Southeast Technical	Nurse Mobility (NURS)	187.31		187.31
Minnesota State College-Southeast Technical	Online Tuition	192.31		192.31
Minnesota State College-Southeast Technical	Musical String Instrument Repair (MSIR)	187.31		187.31
Minnesota State College-Southeast Technical	Band Instrument Repair (BIRT)	187.31		187.31
Minnesota State Community & Technical College	Electrical Lineworker	190.80		190.80
Minnesota State Community & Technical College	Dental Assisting	199.75		199.75
Minnesota State Community & Technical College	Radiology Technician	190.80		190.80
Minnesota State Community & Technical College	Nursing RN	199.75		199.75
Minnesota State Community & Technical College	Nursing LPN	199.75		199.75
Minnesota State Community & Technical College	Nursing Assistant	170.80		170.80
Minnesota State Community & Technical College	Online Programs	199.00		199.00
Minnesota State Community & Technical College	Dental Hygiene	199.75		199.75
Minnesota State University, Mankato	On Campus MBA Program	565.95	22.55	588.50
Minnesota State University, Mankato	On Campus Masters of Accounting (MACC) Program	565.95	22.55	588.50
Minnesota State University, Mankato	Twin Cities MBA Program	697.95	27.25	725.20
Minnesota State University, Mankato	Twin Cities Masters of Accounting (MACC) Program	697.95	27.25	725.20
Minnesota State University, Mankato	Professional Science Masters (PSM) - Info Security & Risk Mgmt	565.95	22.55	588.50
Minnesota State University, Mankato	On Campus Professional Science Masters (PSM) - Engineering Mgmt	565.95	22.55	588.50
Minnesota State University, Mankato	Twin Cities Professional Science Masters (PSM) - Engineering Mgmt	615.95	24.35	640.30
Minnesota State University, Mankato	On Campus Professional Science Masters (PSM) - Geographic Information Science	565.95	22.55	588.50
Minnesota State University, Mankato	Twin Cities Professional Science Masters (PSM) - Geographic Information Science	615.95	24.35	640.30
Minnesota State University, Mankato	Twin Cities MPA Program	425.55	16.65	442.20
Minnesota State University, Mankato	Twin Cities undergraduate courses (resident)	272.25	9.70	281.95
Minnesota State University, Mankato	Twin Cities Graduate courses (resident)	415.95	16.35	432.30
Minnesota State University, Mankato	Masters of Social Work (MSW)	415.95	16.55	432.50
Minnesota State University, Mankato	Master in Science in Teaching & Learning (For Professional Development contract only)	200.00	8.00	208.00
Minnesota State University, Mankato	Graduate Teacher Licensure	415.95	16.55	432.50

Institution	Program/Course Name	FY2015 Tuition Rate Per Credit	FY2016 \$ Increase Per Credit	FY2016 Tuition Rate Per Credit
Minnesota State University Moorhead	Animation (all ANIM rubric courses)	237.43	7.82	245.25
Minnesota State University Moorhead	Athletic Training (all AT rubric courses except 120, 210, 420, 460)	247.43	7.82	255.25
Minnesota State University Moorhead	Chemistry (all CHEM rubric courses except 102, 304)	237.43	7.82	245.25
Minnesota State University Moorhead	Communications (all COMM rubric courses except 100)	229.93	6.32	236.25
Minnesota State University Moorhead	Computer Science & Information Systems (all CSIS rubric courses except 103, 104, 104A)	222.43	11.82	234.25
Minnesota State University Moorhead	Construction Management (all CM rubric courses)	228.43	7.82	236.25
Minnesota State University Moorhead	Counseling & Student Affairs (master's)	410.00	0.00	410.00
Minnesota State University Moorhead	Graphic Communications (all GCOM courses rubric except 150, 152, 452, 469)	252.43	2.82	255.25
Minnesota State University Moorhead	Healthcare Administration (master's)	360.00	40.00	400.00
Minnesota State University Moorhead	Nursing (master's)	430.00	0.00	430.00
Minnesota State University Moorhead	Operations Management (all OM rubric courses)	228.43	7.82	236.25
Minnesota State University Moorhead	Online/Distance Courses (on-line, package, ITV, & off-campus)	277.43	7.82	285.25
Minnesota State University Moorhead	Physical Education (all PE rubric courses)	227.43	7.82	235.25
Minnesota State University Moorhead	Project Management (all PMGT rubric courses)	228.43	7.82	236.25
Minnesota State University Moorhead	School of Business (master's)	360.00	15.00	375.00
Minnesota State University Moorhead	School Psychology (master's)	435.00	0.00	435.00
Minnesota State University Moorhead	Speech-Language Pathology (master's)	425.00	0.00	425.00
Minnesota State University Moorhead	Technology (all TECH rubric courses)	228.43	7.82	236.25
Minnesota State University Moorhead	Theatre (all THTR rubric courses except THTR 120, 360, 397, 420, 460, 497)	242.43	7.82	250.25
Minnesota State University Moorhead	Theatre (master's) (all THTR rubric master's courses except THTR 560)	367.00	13.00	380.00
Minnesota West Community & Technical College	Farm Business Management	174.05		174.05
Minnesota West Community & Technical College	Nursing	196.35		196.35
Minnesota West Community & Technical College	Rad Tech (FY14 charges included course fee, no change in cost to student in FY15)	192.42		192.42
Minnesota West Community & Technical College	Surg Tech(FY14 charges included course fee, no change in cost to student in FY15)	192.22		192.22
Minnesota West Community & Technical College	Welding certificate program	247.00		247.00
Normandale Community College	Global Career Development Facilitator Program	172.19		172.19
Normandale Community College	Online tuition rate	181.49		181.49
Normandale Community College	Nursing (NURS)	193.79	0.00	193.79
Normandale Community College	Dental Hygiene (DENH)	193.79	0.00	193.79

Institution	Program/Course Name	FY2015 Tuition Rate Per Credit	FY2016 \$ Increase Per Credit	FY2016 Tuition Rate Per Credit
North Hennepin Community College	Nursing	189.78		189.78
North Hennepin Community College	Online Courses	177.96		177.96
Northland Community & Technical College	Cardiovascular Tech	190.00		190.00
Northland Community & Technical College	Commercial Vehicle Operations	289.12		289.12
Northland Community & Technical College	Fire Technology	190.00		190.00
Northland Community & Technical College	Fire Fighter-Paramedic	190.00		190.00
Northland Community & Technical College	Occupational Therapy Assistant	190.00		190.00
Northland Community & Technical College	Nursing Assistant (course HLTH 1110)	190.00		190.00
Northland Community & Technical College	Paramedicine	190.00		190.00
Northland Community & Technical College	Pharmacy Technology	190.00		190.00
Northland Community & Technical College	Physical Therapist Assistant	190.00		190.00
Northland Community & Technical College	Practical Nursing	190.00		190.00
Northland Community & Technical College	Radiologic Technology	190.00		190.00
Northland Community & Technical College	Registered Nurse	190.00		190.00
Northland Community & Technical College	Respiratory Therapist	190.00		190.00
Northland Community & Technical College	Surgical Technology	190.00		190.00
Northland Community & Technical College	Phlebotomy	190.00		190.00
Northland Community & Technical College	EMT Basic	190.00		190.00
Northland Community & Technical College	Distance/Online Courses	199.00		199.00
Northland Community & Technical College	360 Center of Excellence	199.00	(12.00)	187.00
Northland Community & Technical College	UAS	300.00		300.00
Northland Community & Technical College	IMAG Imagery Analyst - grant funded program	300.00		300.00
Northland Community & Technical College	GINT-Geospatial Intelligence- grant funded program	300.00		300.00
Northland Community & Technical College	Aviation	198.04		198.04
Northland Community & Technical College	Precision Agriculture Equip. Tech.	0.00	196.00	196.00
Northwest Technical College (Bemidji)	Auto Machinist	203.00		203.00
Northwest Technical College (Bemidji)	Automotive Service Technology	185.00		185.00
Northwest Technical College (Bemidji)	Nursing	185.00		185.00
Northwest Technical College (Bemidji)	Dental Assistant	185.00		185.00
Northwest Technical College (Bemidji)	HVAC Residential Plumbing	185.00		185.00
Northwest Technical College (Bemidji)	Construction Electricity	185.00		185.00
Northwest Technical College (Bemidji)	Massage Therapy	190.25		190.25
Northwest Technical College (Bemidji)	360 Center of Excellence	199.00	(12.00)	187.00
Northwest Technical College (Bemidji)	Distance/On-line courses	199.00		199.00
Pine Technical College	Gunsmithing (GTSP)	163.16		163.16
Pine Technical College	Manufacturing (MTTP)	158.16		158.16
Pine Technical College	Robotics (ETEC)	158.16		158.16
Pine Technical College	Plastics (PLST)	158.16		158.16
Pine Technical College	Nursing (HEOP, PRSG, NURS, HPPC)	189.91		189.91
Pine Technical College	360 Center of Excellence Consortium Courses	199.00	(12.00)	187.00
Pine Technical College	Early Childhood Development (CDEV)	155.16		155.16

Institution	Program/Course Name	FY2015 Tuition Rate Per Credit	FY2016 \$ Increase Per Credit	FY2016 Tuition Rate Per Credit
Rainy River Community College	Industrial Technology	180.79		180.79
Rainy River Community College	Online courses (excluding any courses/programs with a differential tuition rate)	182.62		182.62
Rainy River Community College	Non-resident online courses	222.02		222.02
Ridgewater College	Online tuition	185.00		185.00
Riverland Community College	Truck Driving	264.60		264.60
Riverland Community College	Farm Business Management	167.10		167.10
Riverland Community College	Independent Studies	239.60	(45.00)	194.60
Riverland Community College	A.D. Nursing	199.60		199.60
Riverland Community College	Online Courses	194.60		194.60
Riverland Community College	Cisco Network Associate Program	189.60		189.60
Riverland Community College	Microsoft Systems Administrator	189.60		189.60
Riverland Community College	Microsoft Systems Engineer	189.60		189.60
Riverland Community College	Multimedia	189.60		189.60
Riverland Community College	Web Page Design	189.60		189.60
Riverland Community College	Webmaster	189.60		189.60
Riverland Community College	Chemistry	167.73		167.73
Riverland Community College	Business Administration	167.10		167.10
Riverland Community College	Business & Office/Administrative Support	167.10		167.10
Riverland Community College	Accounting	167.10		167.10
Riverland Community College	Automobile Services	174.60		174.60
Riverland Community College	Construction Electrician	174.60		174.60
Riverland Community College	Wind Energy	174.60		174.60
Riverland Community College	Diesel	174.60		174.60
Riverland Community College	Industrial Machining	174.60		174.60
Riverland Community College	Collision Repair	174.60		174.60
Riverland Community College	Cosmetology	184.60		184.60
Riverland Community College	Massage Therapy	184.60		184.60
Riverland Community College	360 Center of Excellence	199.00		199.00
Riverland Community College	Radiography AAS	194.60		194.60
Riverland Community College	English As A Second Language-Academic	0.00	194.60	194.60
Riverland Community College	Machining	0.00	184.60	184.60
Riverland Community College	Electrical Maintenance Technician	0.00	174.60	174.60
Riverland Community College	Food Science Technolgoy	0.00	174.60	174.60
Riverland Community College	Medical Assistant/Phlebotomy	0.00	184.60	184.60
Riverland Community College	Agricultural Business	0.00	167.10	167.10
Riverland Community College	Agricultrual Science	0.00	174.60	174.60

Institution	Program/Course Name	FY2015 Tuition Rate Per Credit	FY2016 \$ Increase Per Credit	FY2016 Tuition Rate Per Credit
Rochester Community and Technical College	Online tuition differential - media codes 03, 12, 13	194.10		194.10
Rochester Community and Technical College	Hybrid Tuition differential - media code 09	179.10		179.10
Rochester Community and Technical College	Automobile Mechanics (AMT)	179.10		179.10
Rochester Community and Technical College	Computer Aided Drafting	184.10		184.10
Rochester Community and Technical College	Nursing AD (FY13 charges included course fee, no change in cost to student in FY14)	179.10		179.10
Rochester Community and Technical College	PNM (FY13 charges included course fee, no change in cost to student in FY14)	179.10		179.10
Rochester Community and Technical College	Equine Science (EQSC)	226.10		226.10
Rochester Community and Technical College	LAWE - Law enforcement (FY13 charges included course fee, no change in cost to student in FY14)	184.10		184.10
Rochester Community and Technical College	LAWE - Law enforcement Skills	289.10		289.10
Rochester Community and Technical College	Veterinary Assistant/Technician	174.10		174.10
Rochester Community and Technical College	Dental Hygiene	181.90		181.90
Rochester Community and Technical College	Dental Assisting	176.90		176.90
Rochester Community and Technical College	Nursing Assistant	174.90		174.90
Rochester Community and Technical College	Emergency Medical Technician (FY13 charges included course fee, no change in cost to student in FY14)	167.10		167.10
Rochester Community and Technical College	Health Unit Coordinator (FY13 charges included course fee, no change in cost to student in FY14)	167.10		167.10
Rochester Community and Technical College	Human Services Technician (FY13 charges included course fee, no change in cost to student in FY14)	164.10		164.10
Rochester Community and Technical College	Child Development Assistant (FY13 charges included course fee, no change in cost to student in FY14)	167.10		167.10
Rochester Community and Technical College	Design and Visual Communications, Gen (FY13 charges included course fee, no change in cost to student in FY14)	169.10		169.10
Rochester Community and Technical College	Film/Video and Photographic Arts (FY13 charges included course fee, no change in cost to student in FY14)	199.10		199.10
Rochester Community and Technical College	Fine and Studio Art (FY13 charges included course fee, no change in cost to student in FY14)	179.10		179.10
Rochester Community and Technical College	Welding	174.10		174.10
Saint Paul College	360° Manufacturing and Applied Engineering Center of Excellence	199.00	(12.00)	187.00
Saint Paul College	Online Tuition (Media Code 03 and 12)	181.71		181.71
Saint Paul College	Pharmacy Tech	181.54		181.54
Saint Paul College	Phlebotomy	218.03		218.03
Saint Paul College	Pilates	197.44		197.44
Saint Paul College	Pre-Engineering	175.90		175.90
Saint Paul College	Respiratory Therapy	211.71		211.71
South Central College	FBM	163.60		163.60
Southwest Minnesota State University	Hospitality/Culinology Labs	252.45	8.70	261.15
Southwest Minnesota State University	Science Labs includes labs in Agronomy, Biology, Chemistry, Physics, Exercise Science and Environmental Science	241.95	8.30	250.25
Southwest Minnesota State University	Studio Art	241.95	8.30	250.25

Institution	Program/Course Name	FY2015 Tuition Rate Per Credit	FY2016 \$ Increase Per Credit	FY2016 Tuition Rate Per Credit
Southwest Minnesota State University	Intro to Art/Elementary Art	233.55	8.05	241.60
Southwest Minnesota State University	ESL Licensure (Education undergraduate)	231.20	7.80	239.00
Southwest Minnesota State University	ESL Licensure (Education graduate)	356.50	31.00	387.50
Southwest Minnesota State University	Off Camp Grad Ed Learning Communities 15/16	380.00	12.50	392.50
Southwest Minnesota State University	Off Camp Grad Ed Learning Comm. 16/17	380.00	22.50	402.50
Southwest Minnesota State University	Administrative Licensure Program 16/17	0.00	402.50	402.50
Southwest Minnesota State University	Off Campus Education Graduate Program	420.00	16.00	436.00
Southwest Minnesota State University	Off Campus MBA & Management Graduate Program	420.00	16.00	436.00
Southwest Minnesota State University	Undergraduate Off Campus Programs	274.00	9.50	283.50
Southwest Minnesota State University	Undergraduate Online/Web courses	274.00	9.50	283.50
Southwest Minnesota State University	Graduate online/web courses	420.00	16.00	436.00
St. Cloud State University	Twin Cities Graduate Center MBA	780.00	30.73	810.73
St. Cloud State University	St. Cloud MBA	567.00	22.34	589.34
St. Cloud State University	Undergraduate Nursing	246.60	7.9	254.50
St. Cloud State University	Master of Engineering Management	575.00	22.66	597.66
St. Cloud State University	Master of Regulatory Affairs and Services	750.00	29.55	779.55
St. Cloud State University	Master of Applied Clinical Research	750.00	29.55	779.55
St. Cloud State University	Master of Science, Medical Technology Quality (MTG)	750.00	29.55	779.55
St. Cloud State University	Off Campus or on-line Behavioral Analysis	530.99	20.92	551.91
St. Cloud State University	Off Campus North Branch Cohort Undergraduate	259.60	7.90	267.50
St. Cloud State University	Off Campus North Branch Cohort Graduate	405.26	15.97	421.23
St. Cloud State University	Off Campus Workshop Undergraduate	267.39	7.90	275.29
St. Cloud State University	Off Campus Workshop Graduate	405.26	15.97	421.23
St. Cloud State University	Correctional Facility Undergraduate Education	219.45	7.90	227.35
St. Cloud State University	Off Campus Undergraduate	259.60	7.90	267.50
St. Cloud State University	Off Campus Graduate	405.26	15.97	421.23
St. Cloud State University	Off Campus Undergraduate Continuing Education	294.01	7.90	301.91
St. Cloud State University	Off Campus Graduate Continuing Education	424.36	16.72	441.08
St. Cloud State University	Off Campus Undergraduate ITV Continuing Education	294.01	7.90	301.91
St. Cloud State University	Off Campus Graduate ITV Continuing Education	424.36	16.72	441.08
St. Cloud State University	On-Line Department or Continuing Studies Undergraduate	312.40	7.90	320.30
St. Cloud State University	On-Line Department or Continuing Studies Graduate	441.60	17.40	459.00
St. Cloud State University	Masters Information Assurance	605.11	23.84	628.96
St. Cloud State University	Art	255.39	7.90	263.29
St. Cloud State University	Mass Communication	251.78	7.90	259.68
St. Cloud Technical & Community College	Dental Hygiene	183.86		183.86
St. Cloud Technical & Community College	Dental Assisting	183.86		183.86
St. Cloud Technical & Community College	Invasive Cardiovascular Technology	183.86		183.86
St. Cloud Technical & Community College	Sonography	183.86		183.86
St. Cloud Technical & Community College	Paramedicine	183.86		183.86

Institution	Program/Course Name	FY2015 Tuition Rate Per Credit	FY2016 \$ Increase Per Credit	FY2016 Tuition Rate Per Credit
St. Cloud Technical & Community College	Associate Degree of Nursing	212.18		212.18
St. Cloud Technical & Community College	Surgical Technology	183.86		183.86
St. Cloud Technical & Community College	LPN	183.86		183.86
St. Cloud Technical & Community College	360 Center of Excellence	199.00	(12.00)	187.00
St. Cloud Technical & Community College	Online Courses with Media Code 03, 12, or 13	192.86		192.86
Vermilion Community college	Non-resident online courses	222.02		222.02
Winona State University	International Institutes	450.00		450.00
Winona State University	Math Sciences Teaching Academy-Graduate	125.00		125.00
Winona State University	Early Childhood Special Education (Rochester)-Graduate	375.00		375.00
Winona State University	Study Abroad Program	450.00		450.00
Winona State University	Travel Studies Program	400.00		400.00
Winona State University	Criminal Justice - Rochester Campus	250.00		250.00
Winona State University	Teacher Preparation Collaborative Certificate-Graduate	400.00	15.20	415.20
Winona State University	Professional Development for Educators - Graduate	175.00		175.00
Winona State University	Undergraduate Nursing Program	262.00	9.05	271.05
Winona State University	Graduate Nursing Program	530.48	20.15	550.63
Winona State University	Advanced Nursing Practice Specialty Cohorts	900.00	34.20	934.20
Winona State University	Health Leadership & Administration Program-HLA	293.34	10.11	303.45

Institution	Program/Course Name	FY2015 Tuition Rate Per Credit	FY2016 \$ Increase Per Credit	FY2016 Tuition Rate Per Credit
-------------	---------------------	--------------------------------------	-------------------------------------	--------------------------------------

COURSES:

Alexandria Technical & Community College	Psychiatric Clinical	187.26		187.26
Alexandria Technical & Community College	Medical Clinical	187.26		187.26
Alexandria Technical & Community College	Surgical Clinical	187.26		187.26
Alexandria Technical & Community College	OB/Peds Clinical	187.26		187.26
Alexandria Technical & Community College	Comprehensive Clinical I	187.26		187.26
Alexandria Technical & Community College	Comprehensive Clinical II	187.26		187.26
Alexandria Technical & Community College	Child Care Internship	160.55		160.55
Alexandria Technical & Community College	Child Care Practicum I	160.55		160.55
Alexandria Technical & Community College	Child Care Practicum II	160.55		160.55
Alexandria Technical & Community College	Turning II	187.26		187.26
Alexandria Technical & Community College	Milling II	187.26		187.26
Alexandria Technical & Community College	CNC Machining Operations I	187.26		187.26
Alexandria Technical & Community College	CNC Machining Operations II	187.26		187.26
Alexandria Technical & Community College	Operation of Commercial Vehicle	287.08		287.08
Alexandria Technical & Community College	Firearms/Officer Survival Tactics	248.05		248.05

Bemidji State University	Chem -General Chemistry I &II (CHEM 1111/1112)	254.85	7.50	262.35
Bemidji State University	Chem - Principles of Chemistry I & II (CHEM 2211/2212)	254.85	7.50	262.35
Bemidji State University	Chem - Organic Chemistry I & II (CHEM 3371/3372)	269.85	7.50	277.35
Bemidji State University	Chem - Allied Health Lab (CHEM 1110)	259.85	7.50	267.35
Bemidji State University	Chem - Analytical Chem Lab	269.85	7.50	277.35
Bemidji State University	Chem - Biochemistry Lab I & II (CHEM 4471/4472/5471/5472)	264.85	7.50	272.35
Bemidji State University	Chem - Physical Chemistry Lab I & II (CHEM 4771/4772/5771/5772)	264.85	7.50	272.35
Bemidji State University	Chem - Inorganic Chem Lab I (CHEM 3871)	264.85	7.50	272.35
Bemidji State University	Chem - Instrmtl Analys Lab I (CHEM 4571)	264.85	7.50	272.35
Bemidji State University	PE -Athletic Training (PHED 3190/5190)	259.85	7.50	267.35
Bemidji State University	PE - Personal Training: Strength and Speed (PHED 4160/5160)	259.85	7.50	267.35
Bemidji State University	PE - Exercise Physiology & Nutrition (PHED 3300/5300)	259.85	7.50	267.35
Bemidji State University	Physics - Lab (PHYS 1101/1102/2101/2102)	254.85	7.50	262.35
Bemidji State University	Geology - Labs (GEOL 1110/1120/2110 /3120/3212/3500/3600/5120/5212/5500/5600)	254.85	7.50	262.35
Bemidji State University	Environmental -Thesis (ENVR 4990/6990)	391.75	11.30	403.05

Institution	Program/Course Name	FY2015 Tuition Rate Per Credit	FY2016 \$ Increase Per Credit	FY2016 Tuition Rate Per Credit
Central Lakes College	BIOL 1404 - Human Biology	169.10		169.10
Central Lakes College	BIOL 1411 - Concepts of Biology	169.10		169.10
Central Lakes College	BIOL 1415 - Environmental Biology	169.10		169.10
Central Lakes College	BIOL 1431 - General Biology I	169.10		169.10
Central Lakes College	BIOL 1432 - General Biology II	169.10		169.10
Central Lakes College	BIOL 2411 - Biology of Women	169.10		169.10
Central Lakes College	BIOL 2415 - General Ecology Lab	169.10		169.10
Central Lakes College	BIOL 2457 - Microbiology	169.10		169.10
Central Lakes College	BIOL 2467 - Anatomy & Physiology I	169.10		169.10
Central Lakes College	BIOL 2468 - Anatomy & Physiology II	169.10		169.10
Central Lakes College	CHEM 1407 - Life Science Chemistry	169.10		169.10
Central Lakes College	CHEM 1424 - Chemical Principles I	169.10		169.10
Central Lakes College	CHEM 1425 - Chemical Principles II	169.10		169.10
Central Lakes College	CHEM 2472 - Organic Chemistry I	169.10		169.10
Central Lakes College	CHEM 2473 - Organic Chemistry II	169.10		169.10
Central Lakes College	CRJU 2160-Use of Force	270.78		270.78
Central Lakes College	CRJU 2162-Firearms	270.78		270.78
Central Lakes College	CRJU 2164-Patrol Practicals	270.78		270.78
Central Lakes College	CRJU 2166-Tactical Communications/Relations	270.78		270.78
Central Lakes College	CRJU 2124-General Evidence and Identification Preparation	270.78		270.78
Central Lakes College	ESCI 1405 - Astronomy	169.10		169.10
Central Lakes College	ESCI 1452 - Oceanography Lab	169.10		169.10
Central Lakes College	ESCI 1454 - Earth Science and the Environment	169.10		169.10
Central Lakes College	EMTS 1502 - Emergency Medical Technician	224.10		224.10
Central Lakes College	EMTS 1504 - Special Topics (ACLS)	274.10		274.10
Central Lakes College	PHED 1510 - Skiing/Snowboarding	229.10		229.10
Central Lakes College	PHED 1511 - Adv. Skiing/Snowboarding	229.10		229.10
Central Lakes College	PHED 1525 - Personal Protection Awareness	174.10		174.10
Central Lakes College	PHED 1534 - Beginning Golf	174.10		174.10
Central Lakes College	PHED 1541 - Bowling	204.10		204.10
Central Lakes College	AMSL 1412 - American Sign Language II	174.10		174.10
Central Lakes College	AMSL 2412 - American Sign Language IV	174.10		174.10
Central Lakes College	AMSL 2414 - Conversational ASL	234.10		234.10
Central Lakes College	ARTS 1401 Black & White Photo I	169.10		169.10
Central Lakes College	ARTS 1403 Color Photo I	169.10		169.10
Central Lakes College	ARTS 1596 Topics In Art	169.10		169.10

Institution	Program/Course Name	FY2015 Tuition Rate Per Credit	FY2016 \$ Increase Per Credit	FY2016 Tuition Rate Per Credit
Fond du Lac Tribal & Community College	Digital Photography	163.90		163.90
Fond du Lac Tribal & Community College	Introduction to Art	163.90		163.90
Fond du Lac Tribal & Community College	Painting	163.90		163.90
Fond du Lac Tribal & Community College	Ceramics	163.90		163.90
Fond du Lac Tribal & Community College	Drawing	163.90		163.90
Fond du Lac Tribal & Community College	Art Design	163.90		163.90
Fond du Lac Tribal & Community College	Watercolors	163.90		163.90
Fond du Lac Tribal & Community College	Sculptures	163.90		163.90
Fond du Lac Tribal & Community College	Microbiology Lab/Lecture	163.90		163.90
Fond du Lac Tribal & Community College	Human Anatomy and Physiology Lab/Lecture	163.90		163.90
Fond du Lac Tribal & Community College	Aspects of Biology Lab/Lecture	163.90		163.90
Fond du Lac Tribal & Community College	Environmental Science Lab/Lecture	163.90		163.90
Fond du Lac Tribal & Community College	General Biology Lab/Lecture	163.90		163.90
Fond du Lac Tribal & Community College	Intro to Forensic Biology	163.90		163.90
Fond du Lac Tribal & Community College	Principals of Ecology Lab/Lecture	163.90		163.90
Fond du Lac Tribal & Community College	Aspects of Inorganic Chemistry Lab/Lecture	178.94		178.94
Fond du Lac Tribal & Community College	General Chemistry Lab/Lecture	178.94		178.94
Fond du Lac Tribal & Community College	Organic Chemistry Lab/Lecture	178.94		178.94
Fond du Lac Tribal & Community College	Leadership, Ethics, Y Diversity in Law Enforcement	204.50		204.50
Fond du Lac Tribal & Community College	Practical Applications of Criminal Investigations	199.50		199.50
Fond du Lac Tribal & Community College	Patrol Procedures	240.50		240.50
Fond du Lac Tribal & Community College	Careers in the Criminal Justice System	182.00		182.00
Fond du Lac Tribal & Community College	Use of Force I: Basic Defense Tactics	224.00		224.00
Fond du Lac Tribal & Community College	Use of Force II: Firearms	385.00		385.00
Fond du Lac Tribal & Community College	Beginning Bowling	204.94		204.94
Fond du Lac Tribal & Community College	Advanced Bowling	204.94		204.94
Fond du Lac Tribal & Community College	Summer Outdoor Activities	280.00		280.00
Fond du Lac Tribal & Community College	Winter Outdoor Activities	280.00		280.00
Fond du Lac Tribal & Community College	Beginning Golf	255.44		255.44
Fond du Lac Tribal & Community College	Clinical Syntheses	233.00		233.00
Fond du Lac Tribal & Community College	Native Plant Identification	163.90		163.90
Fond du Lac Tribal & Community College	All Private Music Lessons	280.50		280.50
Fond du Lac Tribal & Community College	Beginning Downhill Skiing	250.44		250.44
Fond du Lac Tribal & Community College	HLTH 1032 Health Care Provider CPR & 1st Aid	233.00		233.00
Fond du Lac Tribal & Community College	On-Line Courses	178.90		178.90

Institution	Program/Course Name	FY2015 Tuition Rate Per Credit	FY2016 \$ Increase Per Credit	FY2016 Tuition Rate Per Credit
Hennepin Technical College	Emergency Vehicle Driving Skills (EMSV 1130)	266.70		266.70
Hennepin Technical College	Emergency Medical Technician - Basic (EMSV 1100)	170.70		170.70
Hennepin Technical College	Health Clinical: Clinical Externship I & II (DNTL 1321 & DNTL 1325)	166.70		166.70
Hennepin Technical College	Health Clinicals: Health Unit Coordinator Internship (HLUC 1200)	166.70		166.70
Hennepin Technical College	Health Clinicals: Practicum (MAST 2040)	166.70		166.70
Hennepin Technical College	Health Clinicals: Nursing Assistant (NURS 1001)	166.70		166.70
Hennepin Technical College	Health Clinicals: Pharmacy Technician Externship I & II (PHRM 1080 & PHRM 1090)	166.70		166.70
Hennepin Technical College	Nursing: Foundations I & II (NURS 1103 & NURS 1201)	176.70		176.70
Hennepin Technical College	Nursing: Pharmacology for Practical Nurses (NURS 1141)	176.70		176.70
Hennepin Technical College	Nursing: Nursing Skills I & II (NURS 1161 & NURS 1261)	176.70		176.70
Hennepin Technical College	Nursing: Adult Nursing I & II (NURS 1191 & NURS 1222)	176.70		176.70
Hennepin Technical College	Nursing: Maternal Child Nursing (NURS 1242)	176.70		176.70
Hennepin Technical College	Nursing: Psychosocial Nursing (NURS 2110)	176.70		176.70
Hennepin Technical College	Nursing: Capstone (NURS 2550)	176.70		176.70
Hennepin Technical College	Extrusion Molding Processes I & II (PLST 2011 & PLST 2017)	166.70		166.70
Hennepin Technical College	Injection Molding Processes I, II, & III (PLST 2128, PLST 2138, & PLST 2143)	166.70		166.70
Hennepin Technical College	Public Works (PWRK 1060)	206.70		206.70
Hennepin Technical College	Related Mechanical Skills (FMLR 1301)	231.70		231.70
Hibbing Community College	Course: Fire Arms	236.58		236.58
Hibbing Community College	Course: Basic Fire Arms	236.58		236.58
Hibbing Community College	Automotive Technician Courses	169.62		169.62
Hibbing Community College	Culinary Arts Courses	169.62		169.62
Hibbing Community College	Dental Assistant Courses	169.62		169.62
Hibbing Community College	Diesel Mechanics/Heavy Equip. Maint. Courses	169.62		169.62
Hibbing Community College	Electrical Maint. And Construction Courses	169.62		169.62
Hibbing Community College	Industrial Systems Technology Courses	169.62		169.62
Hibbing Community College	Law Enforcement Courses (Not Listed Above)	169.62		169.62
Hibbing Community College	Medical Laboratory Technician Courses	169.62		169.62
Hibbing Community College	Microcomputer Technician Courses	169.62		169.62
Hibbing Community College	Multi Media Courses	169.62		169.62
Hibbing Community College	Nursing Courses	179.71		179.71
Hibbing Community College	Nursing Assistant/Home Health Aide Courses	169.62		169.62
Hibbing Community College	Pharmacy Technician Courses	169.62		169.62
Hibbing Community College	Professional Truck Driver (CDL) Courses	169.62		169.62
Hibbing Community College	Refrig., Heating, Air Cond. App. Repair Courses	169.62		169.62
Hibbing Community College	Solar Photovoltaic Technician Courses	169.62		169.62
Hibbing Community College	Heating and Cooling Technician (new)	169.62		169.62
Hibbing Community College	Online Tuition - Resident	182.62		182.62

Institution	Program/Course Name	FY2015 Tuition Rate Per Credit	FY2016 \$ Increase Per Credit	FY2016 Tuition Rate Per Credit
Mesabi Range College	Applied Math & Medications	180.18		180.18
Mesabi Range College	Adult Nursing I & Clinical	180.18		180.18
Mesabi Range College	Applied Nursing Skills	180.18		180.18
Mesabi Range College	Maternal/Child Health & Clinical	180.18		180.18
Mesabi Range College	Adult Nursing II & Clinical	180.18		180.18
Mesabi Range College	Mental Health Concepts & Clinical	180.18		180.18
Mesabi Range College	Gerontology & Clinical	180.18		180.18
Minneapolis Community & Technical College	Barbering (1050, 1100, 1200, 1250, 1360, 1370)	158.50		158.50
Minneapolis Community & Technical College	Barbering (1460, 1470, 1500, 1510)	157.69		157.69
Minneapolis Community & Technical College	Early Childhood Education 1600	160.13		160.13
Minneapolis Community & Technical College	Early Childhood Education 2600	158.50		158.50
Minneapolis Community & Technical College	Community Health Worker 1001	165.17		165.17
Minneapolis Community & Technical College	Community Health Worker 1016	160.13		160.13
Minneapolis Community & Technical College	Counseling 2650	158.55		158.55
Minneapolis Community & Technical College	Counseling 2730	165.00		165.00
Minneapolis Community & Technical College	Counseling 2830	156.33		156.33
Minneapolis Community & Technical College	Central Service Technician 1000	165.17		165.17
Minneapolis Community & Technical College	Central Service Technician 1002	160.13		160.13
Minneapolis Community & Technical College	DNTA (1170, 1350)	158.50		158.50
Minneapolis Community & Technical College	DNTA 1274	157.69		157.69
Minneapolis Community & Technical College	ENDT 1010	158.58		158.58
Minneapolis Community & Technical College	ENDT (1200, 2050, 2525, 2550)	157.69		157.69
Minneapolis Community & Technical College	ENDT 1850	160.13		160.13
Minneapolis Community & Technical College	ENDT 2550	170.13		170.13
Minneapolis Community & Technical College	HSER 2003	175.25		175.25
Minneapolis Community & Technical College	HSER 2004	156.88		156.88
Minneapolis Community & Technical College	NAHA (1819, 1850)	161.20		161.20
Minneapolis Community & Technical College	NAHA 1900	158.50		158.50
Minneapolis Community & Technical College	PHLE 1000	160.25		160.25
Minneapolis Community & Technical College	PHLE 1002	158.50		158.50
Minneapolis Community & Technical College	PSOM 1500	160.25		160.25
Minneapolis Community & Technical College	PSOM (1650, 2350)	158.50		158.50
Minneapolis Community & Technical College	PSOM 2150	157.69		157.69
Minneapolis Community & Technical College	PSOM 2250	157.20		157.20
Minneapolis Community & Technical College	FYST 1010	165.58		165.58
Minneapolis Community & Technical College	PHED 2100	230.25	0.00	230.25

Institution	Program/Course Name	FY2015 Tuition Rate Per Credit	FY2016 \$ Increase Per Credit	FY2016 Tuition Rate Per Credit
Minnesota State College-Southeast Technical	Comp 2510 Introduction to Computers	177.31		177.31
Minnesota State College-Southeast Technical	Chem 2518 General, Organic, & Biochemistry I	177.31		177.31
Minnesota State College-Southeast Technical	BIOL 2512 Anatomy & Physiology II	177.31		177.31
Minnesota State College-Southeast Technical	BIOL 2511 Anatomy & Physiology I	177.31		177.31
Minnesota State College-Southeast Technical	COMP 2525 Computers: Issues and Applications II	177.31		177.31
Minnesota State College-Southeast Technical	COMP 2520 Introduction to Graphic Design	177.31		177.31
Minnesota State College-Southeast Technical	HUMA 2540 Introduction to Multimedia and Digital Arts	177.31		177.31
Minnesota State College-Southeast Technical	HUMA 2525 Digital Photography	177.31		177.31
Minnesota State College-Southeast Technical	HUMA 2520 Film Studies	177.31		177.31
Minnesota State College-Southeast Technical	BIOL 2501 Introduction to Biology	177.31		177.31
Minnesota State College-Southeast Technical	BIOL 2530 Microbiology	177.31		177.31
Minnesota State College-Southeast Technical	CHEM 2522 Environmental Chemistry	177.31		177.31
Minnesota State College-Southeast Technical	CHEM 2525 Introduction to Forensic Science	177.31		177.31
Minnesota State College-Southeast Technical	INDS 1628 Introduction to Welding Technologies	187.31		187.31
Minnesota State College-Southeast Technical	INDS 1629 Welding Technologies II	187.31		187.31
Minnesota State College-Southeast Technical	INDS 1630 Welding Technologies III	187.31		187.31
Minnesota State College-Southeast Technical	INDS 1632 Oxy-Fuel Welding Fundamentals	187.31		187.31
Minnesota State Community & Technical College	Online Courses	199.00		199.00
Minnesota State University, Mankato	Anthropology 486/586 (Crime Scene Recovery Workshop)	495.00	19.70	514.70
Minnesota State University, Mankato	Online Courses (Note: It is \$35.00 above the existing resident undergraduate or graduate tuition rates)	35.00	1.25	36.25
Minnesota State University Moorhead	ART 101, 102, 125, 210, 310, 451C, 452C, 452H, 452L, 480, 494C	227.43	7.82	235.25
Minnesota State University Moorhead	ART 203A, 300A, 303A, 304A, 305A, 400A, 404A, 405A, 451A, 452A	257.43	7.82	265.25
Minnesota State University Moorhead	ART 203C, 303C, 304C, 305C, 400C, 404C, 405C, 451D, 451E, 452D, 452E, 452F	237.43	7.82	245.25
Minnesota State University Moorhead	ART 203D, 203E, 203F, 203K, 300D, 300E, 300F, 300K, 303D, 303E, 303F, 304D, 304E, 304F, 305D, 305E, 305F, 400D, 400E, 400F, 404D, 404E, 404F, 405D, 405E, 405F, 451E	252.43	7.82	260.25
Minnesota State University Moorhead	ART 203H, 303H	232.43	7.82	240.25
Minnesota State University Moorhead	ART 203L	224.43	7.82	232.25
Minnesota State University Moorhead	ART 350	229.43	7.82	237.25
Minnesota State University Moorhead	ART 494A	257.43	7.82	265.25
Minnesota State University Moorhead	ART 494D, 494E	237.43	7.82	245.25
Minnesota State University Moorhead	ART 494F	252.43	7.82	260.25
Minnesota State University Moorhead	AST 102, 104	232.43	7.82	240.25
Minnesota State University Moorhead	AST 365	227.43	7.82	235.25
Minnesota State University Moorhead	BCBT 100, 220	232.43	7.82	240.25
Minnesota State University Moorhead	BCBT 360, 397, 420, 425, 430, 461, 462, 463, 475, 476, 477, 478, 479, 480, 481, 482, 490, 497	247.43	7.82	255.25
Minnesota State University Moorhead	BCBT 520, 525, 530	372.00	13.00	385.00
Minnesota State University Moorhead	BIOL 109, 125, 126, 236, 300, 370	232.43	7.82	240.25

Institution	Program/Course Name	FY2015 Tuition Rate Per Credit	FY2016 \$ Increase Per Credit	FY2016 Tuition Rate Per Credit
Minnesota State University Moorhead	BIOL 275, 305, 321, 322, 323, 326, 345, 347, 349, 350, 360, 365, 372, 385L, 390, 402, 455, 479, 497	242.43	7.82	250.25
Minnesota State University Moorhead	BIOL 111, 115, 341	242.43	12.82	255.25
Minnesota State University Moorhead	CHEM105	230.25	15.00	245.25
Minnesota State University Moorhead	CNSA 691A, 691B, 691C, 691D	435.00	0.00	435.00
Minnesota State University Moorhead	CNSA 692A, 692B, 692C, 692D	460.00	0.00	460.00
Minnesota State University Moorhead	CSIS 320, 365	222.43	27.82	250.25
Minnesota State University Moorhead	ED 205, 294, 310	252.43	7.82	260.25
Minnesota State University Moorhead	ED 461V (Student Teaching Abroad)	322.43	7.82	330.25
Minnesota State University Moorhead	EECE 481V (Student Teaching Abroad)	322.43	7.82	330.25
Minnesota State University Moorhead	FILM 100, 172, 200, 284, 384, 400, 401, 472, 484, 485, 496	252.43	7.82	260.25
Minnesota State University Moorhead	FILM 372, 375	247.43	7.82	255.25
Minnesota State University Moorhead	GDES 203	242.43	7.82	250.25
Minnesota State University Moorhead	GDES 375	0.00		250.25
Minnesota State University Moorhead	GDES 303, 304, 305, 306, 404, 405	252.43	7.82	260.25
Minnesota State University Moorhead	GDES 307	0.00		260.25
Minnesota State University Moorhead	GDES 400, 494	237.43	7.82	245.25
Minnesota State University Moorhead	GEOS 115	223.68	7.82	231.50
Minnesota State University Moorhead	GEOS 116, 117, 170, 207, 301, 302, 303, 307, 315, 320, 330, 340, 350, 360, 370, 407, 415, 416, 417	224.09	7.82	231.91
Minnesota State University Moorhead	HLTH 110	227.43	7.82	235.25
Minnesota State University Moorhead	HLTH 125	237.43	7.82	245.25
Minnesota State University Moorhead	HLTH 311, 327, 335, 340, 412, 465	232.43	7.82	240.25
Minnesota State University Moorhead	MATH 105, 110, 127, 142, 143, 229, 232, 261, 262	225.43	7.82	233.25
Minnesota State University Moorhead	MATH 303, 304	222.43	10.82	233.25
Minnesota State University Moorhead	MATH 234, 238, 260, 355	227.43	7.82	235.25
Minnesota State University Moorhead	MDEV 090, 095, 099	227.43	7.82	235.25
Minnesota State University Moorhead	MUS 107A, 107B, 108A, 108B, 110, 150A, 150B, 151, 152, 191, 207A, 207B, 208, 219, 231, 232, 233, 234, 235, 236, 291, 300, 303, 304, 305, 307, 319, 328, 333, 334, 335, 342, 343, 372, 390, 391, 392, 421, 423, 431A, 431B, 432, 433, 440, 441, 442, 445, 446, 447, 471, 472	262.43	7.82	270.25
Minnesota State University Moorhead	MUS 154A, 378	0.00		270.25
Minnesota State University Moorhead	MUS 166, 184, 266, 281, 284, 363, 364, 365, 381, 384, 461, 466, 469, 481, 484, 486	297.43	7.82	305.25
Minnesota State University Moorhead	MUS 267, 361	0.00		305.25
Minnesota State University Moorhead	MUS 523, 524, 531B, 572, 574, 595, 596, 620, 621, 632, 634, 635, 636, 637, 695, 697, 699	387.00	13.00	400.00
Minnesota State University Moorhead	MUS 682, 685, 686	422.00	13.00	435.00
Minnesota State University Moorhead	NURS 301	239.43	7.82	247.25
Minnesota State University Moorhead	NURS 473	235.43	7.82	243.25
Minnesota State University Moorhead	NURS 600	447.00	0.00	447.00
Minnesota State University Moorhead	NURS 642P	460.00	0.00	460.00
Minnesota State University Moorhead	NURS 643P, 644P, 645P	440.00	0.00	440.00
Minnesota State University Moorhead	PARA 425	234.43	7.82	242.25
Minnesota State University Moorhead	PHYS 105, 140, 302, 305, 306, 312, 350	232.43	7.82	240.25
Minnesota State University Moorhead	PHYS 160, 161, 200, 201	232.43	10.82	243.25
Minnesota State University Moorhead	PHYS 318, 322, 370	227.43	7.82	235.25
Minnesota State University Moorhead	PSCI 170	232.43	17.82	250.25
Minnesota State University Moorhead	PSY 230	225.43	7.82	233.25

Institution	Program/Course Name	FY2015 Tuition Rate Per Credit	FY2016 \$ Increase Per Credit	FY2016 Tuition Rate Per Credit
Minnesota State University Moorhead	PSY 620	441.00	0.00	441.00
Minnesota State University Moorhead	PSY 622	470.00	0.00	470.00
Minnesota State University Moorhead	PSY 641, 642, 643	435.00	25.00	460.00
Minnesota State University Moorhead	PSY 723	445.00	0.00	445.00
Minnesota State University Moorhead	PSY 724	440.00	0.00	440.00
Minnesota State University Moorhead	School of Business (only includes 300- and 400-level courses in the following rubrics: ACCT, BUS, FINC, MGMT, MKTG)	228.43	7.82	236.25
Minnesota State University Moorhead	SLHS 273, 421, 446	237.43	7.82	245.25
Minnesota State University Moorhead	SLHS 347	252.43	7.82	260.25
Minnesota State University Moorhead	SLHS 473	227.43	7.82	235.25
Minnesota State University Moorhead	SLP 646	425.00	25.00	450.00
Minnesota State University Moorhead	SPED 225	252.43	7.82	260.25
Minnesota State University Moorhead	SPED 567A, 668B, 668C, 668D, 668E, 668I, 668P	347.00	38.00	385.00
Minnesota State University Moorhead	WS 300	222.43	17.82	240.25
Minnesota State University Moorhead	WS 415	236.43	7.82	244.25
Minnesota West Community & Technical College	DEN1120 Chairside Assisting I	181.55		181.55
Minnesota West Community & Technical College	DEN1125 Chairside Assisting II	181.55		181.55
Minnesota West Community & Technical College	DEN1140 Dental Materials	184.88		184.88
Minnesota West Community & Technical College	DEN1105 Oral Radiology II	198.22		198.22
Minnesota West Community & Technical College	DEN1145 Expanded Functions A	198.22		198.22
Minnesota West Community & Technical College	DEN1150 Expanded Functions B	198.22		198.22
Minnesota West Community & Technical College	HC1175 Nursing Assistant	182.09		182.09
Minnesota West Community & Technical College	LAW1120 Physical Fitness	221.55		221.55
Minnesota West Community & Technical College	LAW2233 Firearms-Patrol Ops	221.55		221.55
Minnesota West Community & Technical College	LAW2250 Accident Inv-Radar-Radio	221.55		221.55
Minnesota West Community & Technical College	LAW2300 Tactical Management	221.55		221.55
Minnesota West Community & Technical College	LAW2310 Use of Force	221.55		221.55
Minnesota West Community & Technical College	LAW2340 Traffic Law-Traffic Stops	221.55		221.55
Minnesota West Community & Technical College	LAW SKILLS courses	278.00		278.00

Institution	Program/Course Name	FY2015 Tuition Rate Per Credit	FY2016 \$ Increase Per Credit	FY2016 Tuition Rate Per Credit
Minnesota West Community & Technical College	MUSC1140 Piano Lessons	321.55		321.55
Minnesota West Community & Technical College	MUSC1141 Piano Lessons	321.55		321.55
Minnesota West Community & Technical College	MUSC1145 Voice Lessons	321.55		321.55
Minnesota West Community & Technical College	MUSC1146 Voice Lessons	321.55		321.55
Minnesota West Community & Technical College	MUSC2140 Piano Lessons	321.55		321.55
Minnesota West Community & Technical College	MUSC2141 Piano Lessons	321.55		321.55
Minnesota West Community & Technical College	MUSC2145 Voice Lessons	321.55		321.55
Minnesota West Community & Technical College	MUSC2146 Voice Lessons	321.55		321.55
Minnesota West Community & Technical College	PHED1145 Bowling	256.55		256.55
Minnesota West Community & Technical College	PHED1160 Beginning Golf	186.55		186.55
Minnesota West Community & Technical College	All other Online Courses	184.05		184.05

Northland Community & Technical College	CRJU 2221	255.67		255.67
Northland Community & Technical College	SURT 2212	246.13		246.13

Northwest Technical College - Bemidji	BLDG 1108 Metal Fabrication	185.00		185.00
---------------------------------------	-----------------------------	--------	--	--------

Riverland Community College	General Biology BIOL 1091	174.60		174.60
Riverland Community College	General Biology BIOL 1092	174.60		174.60
Riverland Community College	A & P I BIOL 2021	174.60		174.60
Riverland Community College	A & P II BIOL 2022	174.60		174.60
Riverland Community College	Microbiology BIOL 2040	174.60		174.60
Riverland Community College	Forensic Biology BIOL 1050	174.60		174.60
Riverland Community College	Nursing Assistant HCNA 1200	182.36		182.36
Riverland Community College	Nursing Assistant Practicum HCNA 1101	174.60		174.60
Riverland Community College	Fundamentals of Wireless LANs	189.60		189.60
Riverland Community College	Fundamentals of Network Security	189.60		189.60
Riverland Community College	Basic Firearms LAWE 1115	214.60		214.60
Riverland Community College	Criminal Investigations LAWE 1110	214.60		214.60
Riverland Community College	Vehicle Ops LAWE 2140	214.60		214.60
Riverland Community College	Police Tactics and Procedures LAWE 2130	214.60		214.60
Riverland Community College	Criminal Procedures LAWE 2122	214.60		214.60
Riverland Community College	Industry Related Welding DESL 1107	189.60		189.60
Riverland Community College	Gas Welding IMMR 1730	189.60		189.60
Riverland Community College	Gas Metal Arc Welding IMMR 2765	189.60		189.60
Riverland Community College	Arc Welding IMMR 1725	189.60		189.60
Riverland Community College	Gas Tungsten Arc Welding IMMR 2770	189.60		189.60
Riverland Community College	Music Private Lessons (MUS 1150-1179 & 2150-2179)	189.60		189.60
Riverland Community College	TAST 2214 Advanced Engine Service	287.20		287.20
Riverland Community College	TAST 2215 High Performance Cylinder Heads	287.20		287.20
Riverland Community College	TAST 2216 High Performance Cylinder Blocks	287.20		287.20
Riverland Community College	Emergency Medical Technician EMER 1200	169.77		169.77
Riverland Community College	Intro to Radiography RADT 1211	202.36		202.36
Riverland Community College	Clinical II RADT 2283	197.42		197.42
Riverland Community College	Concepts of Nursing NURS 1020	198.48		198.48
Riverland Community College	Advanced Med/Surgical NURS 2010	198.48		198.48
Riverland Community College	Hser Field Experience I HSER 1101	195.65		195.65

Institution	Program/Course Name	FY2015 Tuition Rate Per Credit	FY2016 \$ Increase Per Credit	FY2016 Tuition Rate Per Credit
Riverland Community College	Internship I HSER 2200	172.36		172.36
Riverland Community College	Internship II HSER 2201	172.36		172.36
Riverland Community College	Intr & Treatment Applications HSER 1103	180.12		180.12
Riverland Community College	Internship IV HSER 2203	168.48		168.48
Riverland Community College	TAST 2218 Advanced High Performance Engine Assembly	287.20		287.20
Rochester Community and Technical College	Dental Radiology DS 1300	184.10		184.10
Rochester Community and Technical College	Independent Study	194.10		194.10
Rochester Community and Technical College	ART 1115 - Study Tour	214.10		214.10
Rochester Community and Technical College	Spch 2100	419.10		419.10
Rochester Community and Technical College	NURS 2400	419.10		419.10
Rochester Community and Technical College	SPAN 1001	264.10		264.10
Rochester Community and Technical College	HORT 2390	274.10		274.10
Saint Paul College	ARTS 1713-1714 Photography 1-2	161.71	25.00	186.71
Saint Paul College	ASLS 1411-1414 American Sign Language 1-4	175.90		175.90
Saint Paul College	ASLS 1420 ASL Linguistics	175.90		175.90
Saint Paul College	ASLS 1430 Classifiers	175.90		175.90
Saint Paul College	BIOC 1760 Chemical & Biological Instrumentation	175.90		175.90
Saint Paul College	BIOC 1761 Chemical & Biological Ethics & Regulations	175.90		175.90
Saint Paul College	BIOC 2700 Biochemistry	175.90		175.90
Saint Paul College	BIOC 2790 Biochemistry Internship/Research Project	175.90		175.90
Saint Paul College	BIOL 1730 Human Body Systems	175.90		175.90
Saint Paul College	BIOL 1740 & 1745 General Biology 1 & 2	175.90		175.90
Saint Paul College	BIOL 1782 Introduction to Forensic Science	175.90		175.90
Saint Paul College	BIOL 2721 & 2722 Human Anatomy and Phys 1 & 2	175.90		175.90
Saint Paul College	BIOL 2750 General Microbiology	175.90		175.90
Saint Paul College	CHEM 1700 Chemistry Concepts	175.90		175.90
Saint Paul College	CHEM 1711 & 1712 Principles of Chemistry 1 & 2	175.90		175.90
Saint Paul College	CHEM 1760 & 1761 Chem Tech Lab Skills, Lab Safety	175.90		175.90
Saint Paul College	CHEM 2711 & 2712 Organic Chemistry 1 & 2	175.90		175.90
Saint Paul College	CHSN 1409 Preclinic Chemical Control	191.71		191.71
Saint Paul College	CHSN 1413 Preclinic Hair Color	191.71		191.71
Saint Paul College	CHSN 1445 Cosmetic Chemistry & Makeup Applications	191.71		191.71
Saint Paul College	CHSN 1450 Skin Analysis & Massage	191.71		191.71
Saint Paul College	CHSN 1520 40 Hour Refresher	191.71		191.71
Saint Paul College	CHSN 1565 155 Hour Reactivation	191.71		191.71
Saint Paul College	CHSN 1585 Esthetics Refresher	191.71		191.71
Saint Paul College	CHSN 1590 Esthetics Reactivation	191.71		191.71
Saint Paul College	CHSN 2411 CIDESCO Exam Student Preparation	191.71		191.71
Saint Paul College	CULA 1400 Culinary Basics 1	191.71		191.71
Saint Paul College	CULA 1420 Culinary Basics 2	191.71		191.71
Saint Paul College	CULA 1450 Meat Fabrication	191.71		191.71
Saint Paul College	CULA 1460 Basic Menu Prod	191.71		191.71
Saint Paul College	CULA 1510 Commercial Bakery	191.71		191.71
Saint Paul College	CULA 1520 Commercial Pantry	191.71		191.71

Institution	Program/Course Name	FY2015 Tuition Rate Per Credit	FY2016 \$ Increase Per Credit	FY2016 Tuition Rate Per Credit
Saint Paul College	CULA 1530 Commercial Range	191.71		191.71
Saint Paul College	CULA 1550 Grill/Short Order	191.71		191.71
Saint Paul College	CULA 1570 Basic Cake Décor	191.71		191.71
Saint Paul College	CULA 1610 Flavor Dynamics of Wine	261.71		261.71
Saint Paul College	CULA 2411 Rest Operat Lab 1	191.71		191.71
Saint Paul College	CULA 2412 Rest Operat Lab 2	191.71		191.71
Saint Paul College	CULA 2430 Adv Food Prep	191.71		191.71
Saint Paul College	CULA 2440 Ice Carving	191.71		191.71
Saint Paul College	CULA 2450 Adv Cake Pastry	191.71		191.71
Saint Paul College	CULA 2460 Classical Buffet	191.71		191.71
Saint Paul College	CULA 3630 Artisan Breads	191.71		191.71
Saint Paul College	CULA 3635 Artisan Cheese	191.71		191.71
Saint Paul College	CULA 3640 Fundamentals of Charcuterie	191.71		191.71
Saint Paul College	CULA 3650 Organic Foods	191.71		191.71
Saint Paul College	ESOL 0820 Pronunciation and Articulation	175.90		175.90
Saint Paul College	HLTH 1465 Functional Holistic Nutrition	175.90		175.90
Saint Paul College	INTP 1512 & 1513 Consecutive Interpreting 1 & 2	175.90		175.90
Saint Paul College	INTP 2411 & 2412 Sign to Voice Interpreting 1 & 2	175.90		175.90
Saint Paul College	INTP 2421 & 2422 Voice to Sign Interpreting	175.90		175.90
Saint Paul College	INTP 2431 & 2432 Transliterating 1 & 2	175.90		175.90
Saint Paul College	MLDT 1421 Hematology 1	211.71		211.71
Saint Paul College	MLDT 1422 Hematology 2	211.71		211.71
Saint Paul College	MLDT 1430 Urinalysis/Body Fluids	211.71		211.71
Saint Paul College	MLDT 1441 Clinic Chem 1	211.71		211.71
Saint Paul College	MLDT 1442 Clinic Chem 2	211.71		211.71
Saint Paul College	MLDT 1446 Phlebotomy	211.71		211.71
Saint Paul College	MLDT 1510 Immunology	211.71		211.71
Saint Paul College	MLDT 2400 Mycology/Parasitology	211.71		211.71
Saint Paul College	MLDT 2410 Immunohematology	211.71		211.71
Saint Paul College	MLDT 2420 Clinic Microbiology	211.71		211.71
Saint Paul College	PHYS 1720 & 1722 Principles of Physics 1 & 2	175.90		175.90
Saint Paul College	PHYS 2700 & 2710 General Physics 1 & 2	175.90		175.90
Saint Paul College	PRNS 1481 Clinical 1	211.71		211.71
Saint Paul College	PRNS 1492 Clinical 2	211.71		211.71
Saint Paul College	PRNS 1493 Clinical 3	211.71		211.71
Saint Paul College	PRNS 2491 Practicum	211.71		211.71
South Central College	On line courses and programs	195.70		195.70
South Central College	Accounting 2900	166.00		166.00
South Central College	BIOL 235 Anatomy and Physiology II	168.70		168.70
South Central College	BIOL 270 Microbiology	169.06		169.06
South Central College	BIOL 225 Anatomy and Physiology I	165.07		165.07
South Central College	BIOL 100 Intro to Biology	163.50		163.50
South Central College	BIOL 101 Intro to Ecology	163.89		163.89
South Central College	BIOL 115 General Biology 1	168.76		168.76
South Central College	BIOL 116 General Biology 2	164.02		164.02
South Central College	BIOL 211 Genetic	169.98		169.98
South Central College	BIOL 220 Human Anatomy	172.95		172.95
South Central College	BIOL 230 Human Physiology	170.66		170.66
South Central College	CDEV 1230 Guiding Children's Behavior	167.86		167.86
South Central College	CDEV 2510 Internship	167.86		167.86
South Central College	CIM 2225 Concept Engineering IV	176.99		176.99
South Central College	Civing Engineering Technology 1820 Material Tech	188.70		188.70

Institution	Program/Course Name	FY2015 Tuition Rate Per Credit	FY2016 \$ Increase Per Credit	FY2016 Tuition Rate Per Credit
South Central College	Community Social Service CSS 1910	168.64		168.64
South Central College	Engineering Foundations ENGR 1121 (2 cr)	226.20		226.20
South Central College	Engineering Foundations ENGR 1222 (2 cr)	261.20		261.20
South Central College	Engineering Foundations ENGR 2113	261.20		261.20
South Central College	Engineering Foundations ENGR 2214	261.20		261.20
South Central College	GCC 1120 Graphic Software 1	169.95		169.95
South Central College	GCC 1220 Graphic Software 2	169.95		169.95
South Central College	GCC 1260 Printing Process	176.20		176.20
South Central College	GCC 2210 Design & Illustration 2	169.95		169.95
South Central College	GCC 2220 Portfolio 2	176.20		176.20
South Central College	GCC 2261 Production Work Flow 2	182.45		182.45
South Central College	HCTC 1886 Basic Nursing 101	168.64		168.64
South Central College	HEMS 1200 EMT	180.04		180.04
South Central College	HEMS 1220 EMT - Refresher	179.08		179.08
South Central College	HVAC 2100 Theory	178.70		178.70
South Central College	HVAC 2340 - Sheet Metal Ductwork Fabrication	168.66		168.66
South Central College	ICP 1000 Intro Paramedics	207.86		207.86
South Central College	ICP 1010 EMS Skills	165.20		165.20
South Central College	ICP 2030 Critical Care 1	164.45		164.45
South Central College	ICP 2050 Field Internship 1	177.86		177.86
South Central College	ICP 2060 Field Internship II	177.86		177.86
South Central College	Marketing MKT 1940 01	167.86		167.86
South Central College	Medical Assisting MA 2040	192.45		192.45
South Central College	MDLT 1810 Lab Techniques and Orientation	164.45		164.45
South Central College	MDLT 1815 Hematology	167.87		167.87
South Central College	MDLT 1825 Urinalysis/Body Fluids	171.12		171.12
South Central College	NURS 1150 Clinical Foundation	181.12		181.12
South Central College	NURS 1175 Nursing Interventions	171.20		171.20
South Central College	NURS 1275 Medication Administration	171.20		171.20
South Central College	NURS 1350 Clinical Application	171.20		171.20
South Central College	NURS 2250 Clinical Practice Semester 1	186.08		186.08
South Central College	NURS 2275 Skills & Pharm 1	171.20		171.20
South Central College	NURS 2350 Clinical Practice	171.20		171.20

Institution	Program/Course Name	FY2015 Tuition Rate Per Credit	FY2016 \$ Increase Per Credit	FY2016 Tuition Rate Per Credit
South Central College	NURS 2375 Skills & Pharm II	171.20		171.20
South Central College	NURS 2450 Semester 3 Clinical Practice	178.64		178.64
South Central College	NURS 2550 Semester 4 Clinical Practice	171.20		171.20
South Central College	DA 1814 Chairside DA1	164.81		164.81
South Central College	PHRM 2119 Hospital/Institutional Internship	193.25		193.25
South Central College	Capstone CAP 250 AA of Arts	175.20		175.20
South Central College	Welding 1045	199.55		199.55
South Central College	Culn 1200 Garde Manager	0.00	177.86	177.86
South Central College	Culn 1106 World Cuisine & Cultururs	0.00	173.70	173.70
South Central College	Culn 1201 Baking 2	0.00	177.86	177.86
South Central College	Culn 1301 Advanced Culinar	0.00	173.70	173.70
South Central College	Culn 1103 Culinary Fundamentals 1	0.00	173.70	173.70
South Central College	Culn 1104 Culinary Fundamentals 2	0.00	173.70	173.70
South Central College	Culn 1202 Ala Cart Cooking & Prod	0.00	167.45	167.45
South Central College	Culn 1105 Butchery	0.00	179.95	179.95
South Central College	Culn 1204 Garde Manager 2	0.00	177.86	177.86
South Central College	Culn 1203 Baking 1	0.00	171.20	171.20
South Central College	COMP 2453 Virtualization Technologies	0.00	190.20	190.20
South Central College	COMP 2452 Information Storage & Mgmt	0.00	190.20	190.20
South Central College	COMP 2456 Cloud Tehnologies & Svcs	0.00	190.20	190.20
South Central College	Carp 1330 Commercial Construction	0.00	186.20	186.20
South Central College	Carp 1320 Footings & Foundation	0.00	177.86	177.86
South Central College	Carp 1226 Stairway Technology	0.00	186.20	186.20
South Central College	Welding 1075 Advance Welding Lab	0.00	192.45	192.45
South Central College	CMAE 1518 Manufacturing Proc & Prod	0.00	188.70	188.70
South Central College	CMAE 1514 Safety Awareness	0.00	188.70	188.70
South Central College	CMAE 1522 Quality Practices	0.00	188.70	188.70
South Central College	CMAE 1526 Maintenance Awareness	0.00	188.70	188.70
South Central College	NURS 2230 Semester 1 Pharmacology	0.00	201.20	201.20
South Central College	NURS 2220 Semester 1 Fundamentals	0.00	231.20	231.20
South Central College	NURS 2320 Semester 2 Med Surg Basic	0.00	191.20	191.20
Southwest Minnesota State University	Global Studies Travel course (3 cr course)	418.20	14.30	432.50
Southwest Minnesota State University	Hosp. 486: Cruiselines (1 credit course)	296.20	10.30	306.50
Southwest Minnesota State University	PE 122 Lifetime Activities (3 credit course)	241.20	8.30	249.50
Southwest Minnesota State University	PE 144 Adventure Ropes (1 credit course)	241.20	8.30	249.50
Southwest Minnesota State University	PE 210 Introduction to Adapted PE (3 cr)	229.20	7.90	237.10
Southwest Minnesota State University	Computer Science courses: \$5.25/credit differential Courses COMP 164, 165, 166, 233, 306, 324, 351, 368, 376, 377	231.45	7.95	239.40
St. Cloud State University	EDAD 605 Educational Administration	406.11	16.00	422.11
St. Cloud State University	EDAD 608 Educational Administration	406.11	16.00	422.11
St. Cloud State University	EDAD 613 Educational Administration	406.11	16.00	422.11
St. Cloud State University	EDAD 631 Advanced Supervision Techniques	406.11	16.00	422.11

Institution	Program/Course Name	FY2015 Tuition Rate Per Credit	FY2016 \$ Increase Per Credit	FY2016 Tuition Rate Per Credit
St. Cloud State University	EDAD 622 Legal Aspects for Educational Administration	406.11	16.00	422.11
St. Cloud State University	EDAD 640 Educational Administration	406.11	16.00	422.11
St. Cloud State University	EDAD 646 Educational Administration	406.11	16.00	422.11
St. Cloud State University	EDAD 657 Educational Administration	406.11	16.00	422.11
St. Cloud State University	EDAD 697 Current Programs & Issues in School Administration	406.11	16.00	422.11
St. Cloud State University	EDAD 802 Leadership Development	636.54	25.08	661.62
St. Cloud State University	EDAD 804 Visioning and the Change Process	636.54	25.08	661.62
St. Cloud State University	SPED 601 Trends and Problems in Special Education	406.11	16.00	422.11
St. Cloud State University	SPED 602 Research in Special Education	406.11	16.00	422.11
St. Cloud State University	ROTC courses taught by ROTC instructors	0.00	0.00	0.00
St. Cloud Technical & Community College	HPWT 2502 – Reverse Osmosis Chemistry	192.86		192.86
St. Cloud Technical & Community College	HPWT2504 – Reverse Osmosis Principles	192.86		192.86
St. Cloud Technical & Community College	HPWT2506 - Reverse Osmosis (RO) Monitoring	192.86		192.86
St. Cloud Technical & Community College	HPWR2508 – Reverse Osmosis (RO) Cleaning	192.86		192.86
St. Cloud Technical & Community College	HPWT2510 – Reverse Osmosis (RO) Pretreatment	192.86		192.86
St. Cloud Technical & Community College	HPWT2512 – Reverse Osmosis (RO) Biological Control	192.86		192.86
St. Cloud Technical & Community College	HPWT2514 – Reverse Osmosis (RO) System Design	192.86		192.86
St. Cloud Technical & Community College	HPWT2516 – Reverse Osmosis (RO) System Analysis	192.86		192.86
St. Cloud Technical & Community College	HPWT2518 – Ion Exchange (IX) Principles	192.86		192.86
St. Cloud Technical & Community College	HPWT2520 – Electrodialysis Reversal (EDR) & Electrodeionization (EDI)	192.86		192.86
St. Cloud Technical & Community College	HPWT2522 – Ion Exchange (IX) System Design	192.86		192.86
St. Cloud Technical & Community College	HPWT2524 – Ion Exchange (IX) System Analysis	192.86		192.86
St. Cloud Technical & Community College	HPWT2526 – Deionized (DI) Water Principles	192.86		192.86
St. Cloud Technical & Community College	HPWT2528 – Deionized (DI) Water System Design	192.86		192.86
St. Cloud Technical & Community College	HPWT2530 – Deionized (DI) Water System Analysis	192.86		192.86
St. Cloud Technical & Community College	HPWT2532 – Deionized (DI) Water Maintenance	192.86		192.86

Institution	Program/Course Name	FY2015 Tuition Rate Per Credit	FY2016 \$ Increase Per Credit	FY2016 Tuition Rate Per Credit
Vermilion Community College	PREC 2271-2275 Seasonal Park Law	272.67		272.67
Vermilion Community College	HLTH 1755 Emergency Medical Response	273.84		273.84
Vermilion Community College	HLTH 1761 EMT Preparation Course	213.06		213.06
Vermilion Community College	HLTH 1765 Emergency Medical Technician	213.06		213.06
Vermilion Community College	HLTH 1762 Emergency Medical Technician	213.06		213.06
Vermilion Community College	HLTH 1255 Wilderness Emergency Response	350.75		350.75
Vermilion Community College	HLTH 1275 Wilderness First Responder	273.84		273.84
Vermilion Community College	HLTH 1276 Wilderness First Responder Open Recert	273.84		273.84
Vermilion Community College	HLTH 1265 Winter Wilderness Emergency Response	350.75		350.75
Vermilion Community College	HLTH 1445 Low Angle - Technical Rope Rescue	350.75		350.75
Vermilion Community College	HLTH 1446 High Angle Technical Rope Rescue	350.75		350.75
Vermilion Community College	HLTH 1447 Water, Boat, and Ice Rescue	350.75		350.75
Vermilion Community College	HLTH 1448 ATV and GPS Land-Based Rescue	350.75		350.75
Vermilion Community College	Independent Study courses	269.06		269.06
Vermilion Community College	All resident courses offered via online (excluding any courses/programs with a differential tuition rate)	182.62		182.62
Vermilion Community College	TXDY 1225 Taxidermy Forum	272.67		272.67
Vermilion Community College	TXDY 1235 State and Federal Taxidermy Regulations	272.67		272.67
Vermilion Community College	TXDY 1245 Game Head Mounts	272.67		272.67
Vermilion Community College	TXDY 1255 Full Body Mounts	272.67		272.67
Vermilion Community College	TXDY 1265 Bird Mounts	272.67		272.67
Vermilion Community College	TXDY 1275 Fish Mounts	272.67		272.67
Vermilion Community College	TXDY 1285 Habitats and Bases	272.67		272.67
Winona State University	Creative Visions Teaching Academy (CVTA)	up to \$200/credit		up to \$200/credit
Winona State University	SCIE 640 Topics in STEM Professional Development	150.00		150.00

Minnesota State Colleges & Universities
FY2016 Non-resident Tuition Rates

Institution	FY2015 Non-Resident	FY2016 Non-Resident
STATE COLLEGES		
Alexandria Technical & Community College	\$160.55	\$160.55
Anoka-Ramsey Community College	\$144.96	\$144.96
Anoka Technical College	\$166.99	\$166.99
Central Lakes College	\$159.10	\$159.10
Century College	\$160.60	\$160.60
Dakota County Technical College	\$168.95	\$168.95
Fond du Lac Tribal & Community College	\$158.90	\$158.90
Hennepin Technical College	\$156.70	\$156.70
Inver Hills Community College	\$159.00	\$159.00
Lake Superior College	\$294.51	\$294.51
Minneapolis Community & Technical College	\$155.25	\$155.25
Minnesota State College-Southeast Technical	\$167.31	\$167.31
Minnesota State Community & Technical College	\$160.80	\$160.80
Minnesota West Community & Technical College*	\$343.10	\$343.10
Normandale Community College	\$161.49	\$161.49
North Hennepin Community College	\$165.08	\$165.08
Northeast Higher Ed District		
Hibbing Community College	\$197.02	\$197.02
Itasca Community College	\$197.02	\$197.02
Mesabi Range College	\$197.02	\$197.02
Rainy River Community College	\$197.02	\$197.02
Vermilion Community College	\$197.02	\$197.02
Northland Community & Technical College	\$165.00	\$165.00
Northwest Technical College (Bemidji)	\$173.00	\$173.00
Pine Technical and Community College	\$306.32	\$306.32
Ridgewater College	\$161.30	\$161.30
Riverland Community College	\$164.60	\$164.60
Rochester Community and Technical College	\$164.10	\$164.10
Saint Paul College	\$161.71	\$161.71
St. Cloud Technical & Community College	\$158.91	\$158.91
South Central College	\$161.20	\$161.20

STATE UNIVERSITIES	FY2015 Undergraduate	FY2016 Undergraduate	FY2015 Graduate	FY2016 Graduate
Bemidji State University (UG per credit up to 12 credits)	\$249.85	\$257.35	\$365.80	\$388.05
Bemidji State University (UG 12-18 credits)	\$3,572.50	\$3,680.00	n/a	n/a
Bemidji State University (UG 19+)	3572.50+249.85/cr.	3680+257.35/cr.	n/a	n/a
Metropolitan State University	\$430.45	\$446.38	\$672.66	\$718.48
Minnesota State University, Mankato	\$564.04	\$584.05	\$365.95	\$380.50
Minnesota State University, Mankato (UG Banded 12-18 cr)	\$7,073.04	\$7,324.15	n/a	n/a
Minnesota State University, Mankato (UG 19 + cr)	\$7,073.04 + \$575	\$7,324.15 + \$575	n/a	n/a
Minnesota State University Moorhead (UG 1-11 cr.)	\$444.86	\$460.50	\$694.00	\$720.00
Minnesota State University Moorhead (UG 12-19 cr.)	\$6,898.00	\$7,135.00	n/a	n/a
Minnesota State University Moorhead (UG 20+ cr.)	\$6,898 + \$444.86	\$7,135 + \$460.50	n/a	n/a
Saint Cloud State University	\$474.20	\$491.27	\$538.86	\$560.09
Southwest Minnesota State University	\$226.20	\$234.00	\$359.50	\$382.50
Winona State University	\$411.90	\$426.32	\$542.10	\$562.70
Winona State University (UG Banded 12-18 cr.)	\$6,183.20	\$6,399.60	n/a	n/a
Winona State University (UG Banded 19+ cr.)	\$6,183.20+\$411.90	\$6,399.60+\$426.32	n/a	n/a

*Minnesota West only charge these rates to non-residents/non-reciprocity if paperwork is not submitted or MN resident tuition scholarship eligibility is not maintained; otherwise charge resident rate. St. Cloud State University charges resident rates for the following types of students: international, graduate assistants, athletic/academic talent, alumni legacy, and high achiever.

**Minnesota State Colleges and Universities
Revenue Fund
Proposed Room and Board Fees FY 2016**

	Approved FY 2015	Proposed FY2016	Percent Change	Ave R&B FY2015	Ave R&B FY2016	% Change in R&B Rates
Bemidji State University						
Double Room	\$ 4,690	\$ 4,830	3.0%			
Single Room	\$ 5,460	\$ 5,624	3.0%			
Suites		\$ 6,046				
Meal Plan options						
400 meals + 700 Flex Dollars	\$ 2,780	\$ 2,860	2.9%	\$ 7,470	\$ 7,690	2.95%
Summer Session (per week)	\$ 130	\$ 140	7.7%			
Minnesota State University Moorhead						
Double Room	\$ 4,662	\$ 4,848	4.0%			
(weighted rates of traditional and renovated)						
Single Room	\$ 5,358	\$ 5,572	4.0%			
Unlimited (19 meal) changed from FY16						
Flex Dollars	\$ 2,942	\$ 2,950	0.3%	\$ 7,374	\$ 7,604	3.12%
		\$150 incl. above				
Summer Session (10 weeks)						
Double Room	\$ 78	\$ 81	3.8%			
Single Room	\$ 96	\$ 100	4.2%			
Double as Single	\$ 108	\$ 112	3.7%			
Minnesota State University, Mankato						
Double Room	\$ 4,822	\$ 5,097	5.7%			
Single Room	\$ 6,717	\$ 7,076	5.3%			
Suites		\$ 6,303				
21 Meals a Week						
Flex Dollars	\$ 200	\$ 200	0.0%	\$ 7,375	\$ 7,758	5.19%
Summer Session (10 weeks) Term						
Double	\$ 1,040	\$ 1,538	47.9%			
Single	\$ 1,440	\$ 2,136	48.3%			
St. Cloud State University						
Double Room	\$ 4,700	\$ 4,890	4.0%			
Single Room	\$ 6,504	\$ 7,266	11.7%			
(Carte Blanche Plan) 20 Meals a Week						
Flex Dollars	\$ 350	\$ 400	14.3%	\$ 7,235	\$ 7,930	9.61%
Summer Session (10 weeks)						
Double (per week)	\$ 75	\$ 78	4.0%			
Single (per week)	\$ 110	\$ 110	0.0%			
Southwest Minnesota State University						
Double Room	\$ 4,682	\$ 4,822	3.0%			
Single Room	\$ 6,078	\$ 6,260	3.0%			
14 Meals a Week (Husky 200 w/ \$200 Munch)						
Flex Dollars	\$ 300	\$ 300	0.0%	\$ 7,146	\$ 7,571	5.95%
Summer Session						
	Per week	Summer				
Vermilion Community College						
(new to the fund for FY16)						
Doubles	\$ 3,600	\$ 3,800	5.56%		\$ 5,660	
Singles	\$ 4,400	\$ 4,800	9.09%			
10 meals / week		\$ 1,860				
Winona State University						
Double Room	\$ 5,246	\$ 5,404	3.0%			
Single Room	\$ 6,106	\$ 6,290	3.0%			
14 Meals a Week (Contract base)						
Flex (Basic Mandatory)	\$ 340	\$ 350	2.9%	\$ 7,530	\$ 8,012	6.40%
Summer session (per night)	\$ 12	\$ 12	0.0%			
Average (double room & board)	\$ 7,355	\$ 7,761	5.5%			
\$ Change		\$ 406				

Rates noted above are based on the most common traditional-style room and most popular board plan. Each university Summer session rates have been added.

MINNESOTA STATE COLLEGES AND UNIVERSITIES

Revenue Fund

Proposed Student Union Facility Fees FY 2016

	Approved FY 2015	Proposed FY 2016	% Increase
Bemidji State University Per credit charged to all students 23.22 per credit hour by 12 credits	\$ 273.15	\$ 278.64	2.01%
Metropolitan State University (FY15 rates during construction; FY16 expected opening) (\$8.50 per credit by 24 credits)	\$ 60.00	\$ 204.00	n/a
Minneapolis Community & Technical College Per credit charged to all students 5.50 per credit hour by 30 credits	\$ 165.00	\$ 165.00	0.00%
Minnesota State University Moorhead Per credit charged to all students \$12.43/per credit up to 24 credits	\$ 289.68	\$ 298.32	2.98%
Minnesota State University, Mankato Per credit charged to all students \$10.85 per credit by 24 credits	\$ 255.60	\$ 260.40	1.88%
Normandale Community College Per credit charged to all students 7.50 per credit hour by 30 credits	\$ 225.00	\$ 225.00	0.00%
St. Cloud State University Per credit charged to all students 9.55 per credit hour by 24 credits	\$ 199.20	\$ 229.20	15.06%
Southwest Minnesota State University Per credit charged to all students 13.52 per credit hour by 24 credits	\$ 315.12	\$ 324.48	2.97%
Winona State University Per credit charged to all students 7.85 per credit hour by 32 credits	\$ 251.20	\$ 251.20	0.00%
Average Fee	\$ 246.74	\$ 248.47	0.70%
Maximum Fee	\$ 315.12	\$ 324.48	15.06%

The total maximum is the amount for the academic year only. Summer or other sessions are charged on a per credit basis.

St. Cloud State University (Revenue Fund Guarantees debt) Per Credit Facility Assessment Fee 4.60 per credit hour by 24 credits	\$ 110.40	\$ 110.40	0.00%
---	------------------	------------------	--------------

MINNESOTA STATE COLLEGES AND UNIVERSITIES
Revenue Fund

Proposed Wellness Facility Fees FY 2016	Approved FY 2015	Proposed FY 2016	% Change
Anoka Ramsey Community College Annual Wellness Fee (5.15 per credit hour)	\$150.00	\$154.50	3.00%
Minnesota State University, Mankato Annual Outdoor Rec Facilities (2.50 per credit (1-11 credits); \$30 per term for banded credits 12-18 cr.)	\$60.00	\$60.00	0.00%
Minnesota State University Moorhead Annual Wellness Fee (\$8.48/credit up to 12 credits)	\$197.76	\$203.52	2.91%
Minnesota State Community & Technical College Annual Wellness Fee (\$2.20 per credit hour)	\$66.00	\$66.00	0.00%
Winona State University Annual Wellness Fee (6.00 per credit hour /\$72/semester, \$144 banded)	\$144.00	\$144.00	0.00%
Average	\$123.55	\$125.60	1.66%

MINNESOTA STATE COLLEGES AND UNIVERSITIES
 Revenue Fund
 Proposed Parking Facility Fees FY 2016

<u>Charge By Credit</u>		FY15	FY16	<u>% Change</u>	FY15	FY16	<u>note</u>
		<u>Per Credit</u>	<u>Per Credit</u>		<u>Annual</u>	<u>Annual</u>	
Alexandria Technical and Community College	Lot	\$3.15	\$3.31	5.08%	\$94.50	\$99.30	All students charged except online and off campus
Century College	Lot	\$4.25	\$4.25	0.00%	\$127.50	\$127.50	All students charged except online
Normandale Community College	Lot, Ramp	\$9.00	\$9.50	5.56%	\$270.00	\$285.00	All students charged except online; carpoolers pay 50%
Saint Paul College	Ramp	\$9.33	\$9.33	0.00%	\$279.90	\$279.90	All students charged
Metropolitan State University	Lot, Ramp	\$10.00	\$12.00	20.00%	\$300.00	\$360.00	Opening in FY16; all students charged
<u>Charge by Use</u>		<u>Per Day</u>	<u>Per Day</u>	<u>% Change</u>	<u>Annual</u>	<u>Annual</u>	<u>note</u>
Minneapolis Community and Technical College	Ramp	\$2.50	\$2.50	0.00%	\$265.00	\$265.00	\$5.00/cash (non-contract)
St. Cloud State University	Ramp	\$12.00	\$12.00	0.00%	\$500.00	\$500.00	\$1.50/hr; Max \$12 day

*Assumptions for Daily Usage Fee:

Average full time student cost based on 129 days of parking

Minnesota State Colleges and Universitys Student Housing - University/College Owned
 (Not in Revenue Fund)

	FY2015		FY2016		
	For the Academic Year		For the Academic Year	Change	
Fond du Lac Tribal and Community College	\$	3,508	\$	3,508	0.00%
Cloquet (based on \$13.65/night; 120 fall 137 spring days for 257 days total)					
Northeast Higher Education District					
Rainy River					
Doubles	\$	2,950	\$	2,950	0.00%
Singles	\$	4,300	\$	4,300	0.00%
Hibbing					
Doubles	\$	3,000	\$	3,000	0.00%
Singles	\$	4,000	\$	4,000	0.00%
Itasca					
Doubles	\$	3,790	\$	4,020	6.07%
Singles	\$	3,990	\$	4,400	10.28%
Triples	\$	3,580	\$	3,800	6.15%
Quads	\$	3,170	\$	3,360	5.99%
MSU Moorhead Foundation Apartments - 10 month Lease					
Number of beds: 144					
Full Apartment rental	\$	16,330	\$	19,360	18.55%
4 Residents	\$	4,083	\$	4,840	18.55%
3 Residents	\$	5,444	\$	6,453	18.54%
2 Residents	\$	8,165	\$	9,680	18.55%

FY2016 Housing Fees

Minnesota State Colleges and Universities Student Housing - University/College Managed or Affiliated
(Not in Revenue Fund)

	FY2015	FY2016	Change
	For the Academic Year	For the Academic Year	
St. Cloud State University			
Coburn Plaza Apartments - 10 month Lease			
Number of beds: 453			
Studio	\$ 8,000	\$ 8,160	2.00%
1 Bedroom	\$ 8,150	\$ 8,310	1.96%
2 Bedroom	\$ 7,900	\$ 8,058	2.00%
4 Bedroom	\$ 7,420	\$ 7,568	1.99%
Minnesota State Community and Technical College			
Fergus Falls			
Williams Hillside Village - Doubles	\$ 3,100	\$ 3,000	-3.23%
Williams Hillside Village - Singles	\$ 3,700	\$ 3,800	2.70%
College Manor - Singles	\$ 3,600	\$ 3,600	0.00%
Board - Declining Card Balance	\$ 900	\$ 900	0.00%
Minnesota West Community and Technical College			
Canby (Carr Residence Hall)			
Singles	\$ 2,400	\$ 2,400	0.00%
Northeast Higher Education District			
Mesabi (Alpine Village)			
Virginia Doubles	\$ 3,720	\$ 3,754	0.91%
Singles	\$ 4,222	\$ 4,262	0.95%
Riverland Community College			
Austin			
Doubles	\$ 2,800	\$ 3,000	7.14%
Singles	\$ 4,000	\$ 4,200	5.00%
Southwest Minnesota State University Foundation Apartments - 10 month Lease			
Number of beds: 141			
2,3 and 4 bedrooms (room only)	\$ 6,238	\$ 6,538	4.81%
Winona State University			
East Lake Apartments - Winona Foundation- 9 Month Lease			
Number of beds: 376			
Efficiency	\$ 3,948	\$ 4,068	3.04%
1 Bedroom	\$ 4,264	\$ 4,392	3.00%
2 Bedroom	\$ 4,264	\$ 4,392	3.00%
4 Bedroom	\$ 4,936	\$ 5,084	3.00%