

**MINNESOTA STATE COLLEGES AND UNIVERSITIES
BOARD OF TRUSTEES**

Agenda Item Summary Sheet

Committee: Diversity and Multiculturalism **Date of Meeting:** January 18, 2011

Agenda Item: Enrollment and Retention Data for Underrepresented Students

Proposed Policy Change Approvals Required by Policy Other Approvals Monitoring

Information

Cite policy requirement, or explain why item is on the Board agenda:

Update and discussion by trustees on recent trends in underrepresented student enrollment and retention.

Scheduled Presenter(s):

Whitney Stewart Harris, Executive Director, Diversity and Multiculturalism
Craig Schoenecker, System Director for Research

Outline of Key Points/Policy Issues:

- The system implemented the Access, Opportunity and Success Initiative to improve recruitment, retention and success of underrepresented students in Fiscal Year 2008.
- Additional funds were allocated to the colleges and universities and to three access and opportunity centers of excellence to expand recruitment and support services for underrepresented students in Fiscal Years 2008 through 2011.
- Enrollment of underrepresented students and second fall retention of underrepresented students are outcome measures for the initiative.
- Enrollment of new underrepresented students increased by 9,893 between Fiscal Years 2009 and 2010.
- Enrollment of continuing underrepresented students increased by almost 8,500 students, or 14 percent, between fall semester 2009 and fall semester 2010.

Background Information:

The Board of Trustees of the Minnesota State Colleges and Universities system is committed to increasing higher education access and success for all Minnesotans. The discussion focuses on enrollment and retention of underrepresented students.

**BOARD OF TRUSTEES
MINNESOTA STATE COLLEGES AND UNIVERSITIES**

INFORMATION ITEM

**ENROLLMENT AND RETENTION DATA FOR
UNDERREPRESENTED STUDENTS**

BACKGROUND

The Board of Trustees of the Minnesota State Colleges and Universities system is committed to increasing higher education access and success for all Minnesotans. The Governor and the 2007 Legislature approved \$22 million in additional resources to support the Access, Opportunity and Success initiative. The system implemented the initiative to improve recruitment, retention and success of underrepresented students. Funds were allocated to the colleges and universities and to three access and opportunity centers of excellence to expand recruitment and support services for underrepresented students in Fiscal Years 2008 through 2011.

Underrepresented students include three groups:

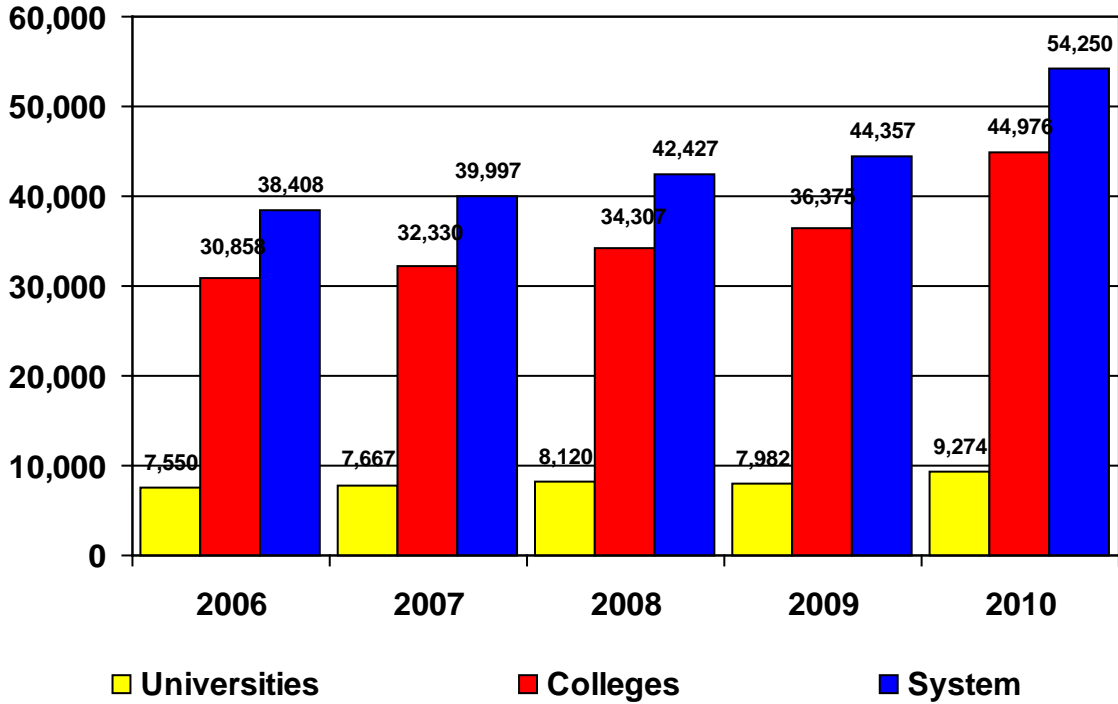
- Students of Color – American Indian, Asian or Pacific Islander, Black and Hispanic students.
- Low Income Students – Classification includes students who were determined to be eligible for a federal Pell Grant using data from the Free Application for Federal Student Aid (FAFSA) and financial aid award data.
- First Generation Students – Classification includes students whose parents did not attend college based on student-provided data on parental education.

Enrollment of new underrepresented students and second fall retention of underrepresented students are outcome measures for the initiative. While new underrepresented students entered a system college or university throughout the fiscal year, the retention rate is the proportion of fall semester entering full-time regular and transfer undergraduate students, who re-enrolled at the same college or university during the second fall semester after entry.

ENROLLMENT UPDATE

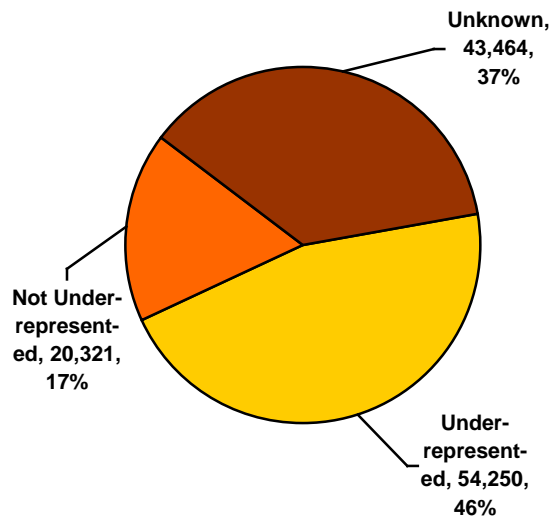
Fiscal Year 2010 Underrepresented Undergraduate Students: Systemwide enrollment of new underrepresented undergraduate students increased by 9,893, or 22 percent, from 44,357 in Fiscal Year 2009 to 54,250 in 2010, as shown in Figure 1. Total new undergraduate student enrollment increased by 6 percent.

**Figure 1: New Underrepresented Undergraduate Students
Minnesota State Colleges and Universities
Fiscal Years 2006 to 2010**



Systemwide, underrepresented students constituted 46 percent of new students, while students who were not underrepresented constituted 17 percent of new students in Fiscal Year 2010, as shown in Figure 2.

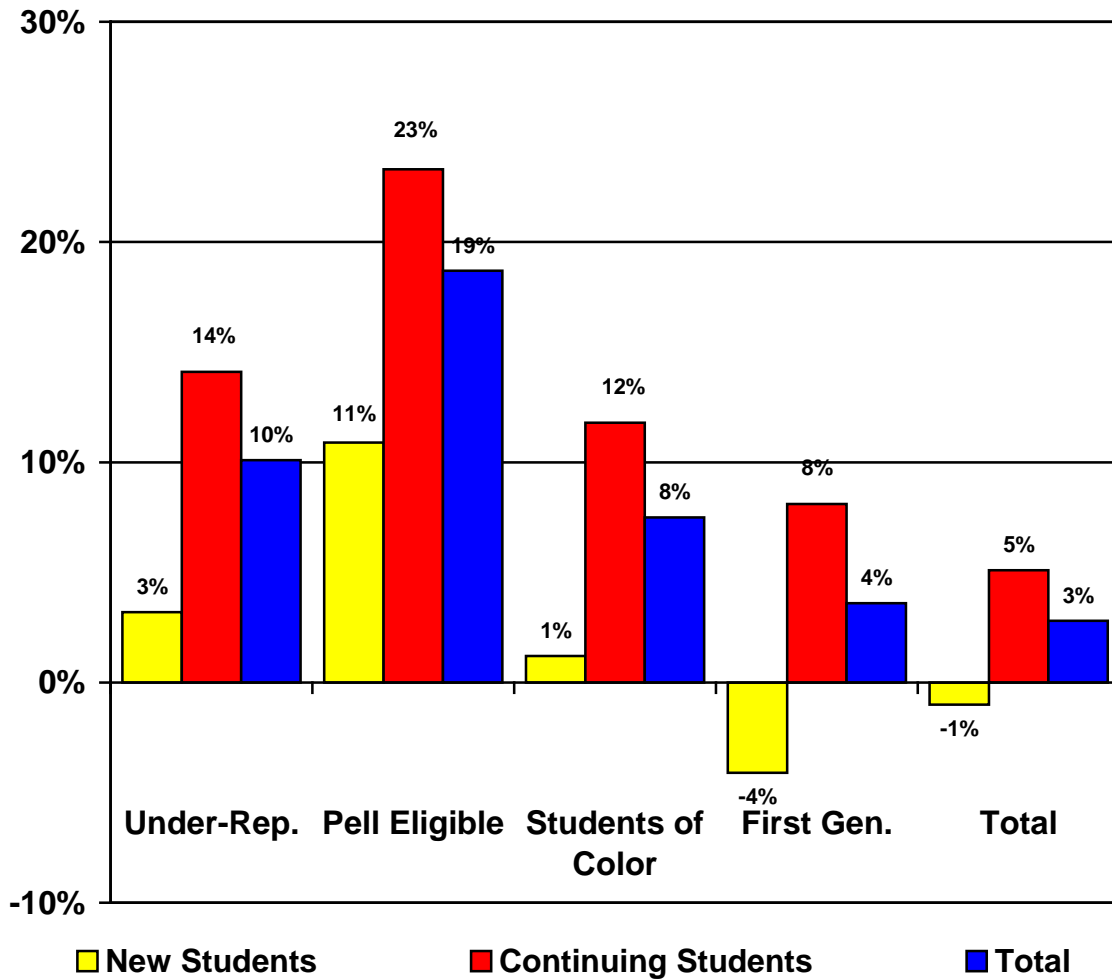
**Figure 2: New Undergraduate Students by Underrepresented Status
Minnesota State Colleges and Universities
Fiscal Year 2010**



Fall 2010 Underrepresented Undergraduate Students: Systemwide enrollment of continuing underrepresented undergraduate students increased substantially in several categories between fall 2009 and fall 2010, while enrollment of new underrepresented students grew modestly.

- Enrollment of continuing underrepresented students increased by almost 8,500, or 14 percent, while enrollment of new underrepresented students increased by over 1,100, or 3 percent, from fall 2009 to 2010, as shown in Figure 3.
 - Enrollment of continuing students who are eligible for Pell Grants increased by 9,800, or 23 percent;
 - Enrollment of continuing students of color increased by 12 percent;
 - Enrollment of continuing first generation students increased by 8 percent;

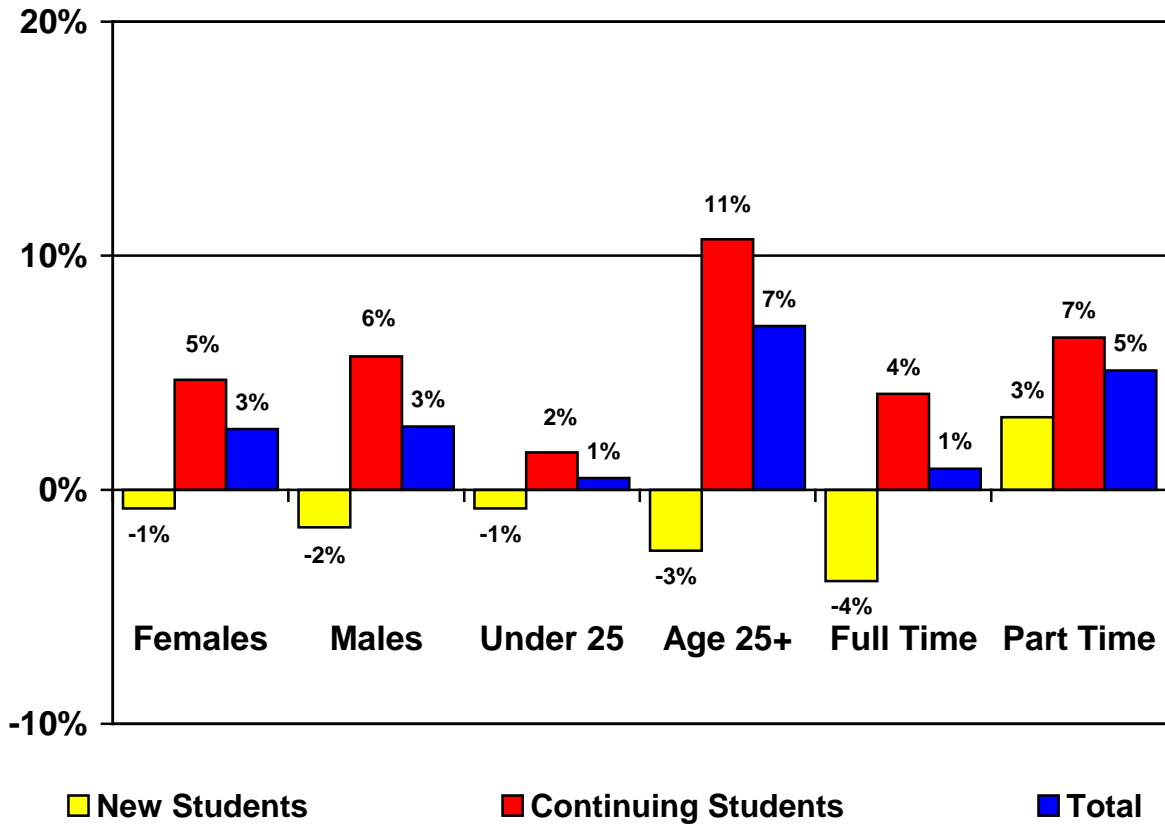
**Figure 3: Increase in Undergraduate Students by Underrepresented Category
Minnesota State Colleges and Universities
Fall 2009 to Fall 2010 (30th Day)**



Fall 2010 Undergraduate Students: Systemwide enrollment of continuing undergraduate students increased in several categories while enrollment of new undergraduate students decreased between fall 2009 and fall 2010, as shown in Figure 4.

- Enrollment of continuing female and male students increased by 5 and 6 percent respectively while enrollment of new females and males decreased by 1 and 2 percent.
- Enrollment of continuing students aged 25 and above increased by 11 percent while enrollment of new students in this age category decreased by 3 percent.
- Enrollment of continuing full-time students increased by 4 percent while new full-time enrollment decreased by 4 percent.

**Figure 4: Increase in Undergraduate Students by Age, Gender and Status
Minnesota State Colleges and Universities
Fall 2009 to Fall 2010 (30th Day)**



RETENTION UPDATE

The analysis of fall retention rate has not been completed due to a delay in tracking of student enrollment at non-system institutions through the National Student Clearinghouse.