



# Northland Community & Technical College

Located in Northwest Minnesota along the North Dakota and Canadian borders, Northland Community & Technical College invites a purpose of Brave Firsts and Bold Progress, a pioneering spirit among students, faculty, staff, and administrators who daily impact our communities and beyond. Northland has many innovative partnerships and programs to ensure students have the opportunities to support the local, regional, and state economies. Northland is also home to a National Science Foundation Advanced Technology Education Center, the National Center for Autonomous Technology (NCAT), working to support nationwide technical skills for the immerging field of autonomous technology.

## Contributing to the Minnesota Economy

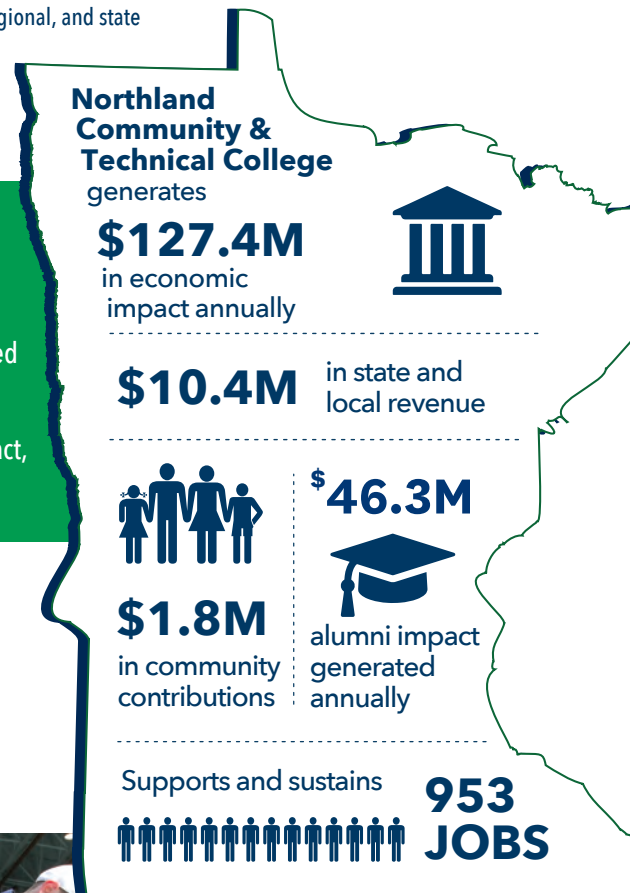
- Northland Community & Technical College generates an annual impact of **\$127.4 million**. This includes a direct impact of \$74.5 million and an indirect/induced impact of \$52.9 million.
- Spending on operations and capital projects generates \$46.5 million of the total impact, and student and visitor spending generates \$80.9 million.

## Supporting and Sustaining Jobs in the State

- Northland Community & Technical College supports and sustains 953 Minnesota jobs (681 direct and 272 indirect/induced). These jobs are at the college and in the community - 169 direct jobs are employees of Northland Community & Technical College.

## Generating Local and State Tax Revenue

- The combined tax impact of Northland Community & Technical College, its suppliers, students and visitors is **\$10.4 million**. This includes a direct impact of \$7.2 million and indirect/induced impact of \$3.2 million.



## Alumni in the State Generate Additional Impact

An estimated 12,544 Northland Community & Technical College alumni living and working in Minnesota are continuing to make a positive economic impact after graduation. These graduates are an integral part of the Minnesota workforce, impacting the economy not only through their spending but also through the extra earning power generated by their Northland Community & Technical College degree.

Each year, Northland Community & Technical College alumni generate \$46.3 million in economic impact for Minnesota and support and sustain 247 jobs. Over their 40-year career, Northland Community & Technical College alumni will generate \$1.9 billion in the economy. These impacts are based on the added value of earning a degree from Northland Community & Technical College, not alumni full wages. This impact is based upon the total number of alumni in Minnesota 10 years after graduation.

## Brave Firsts, Bold Progress

Northland continues to lead the state in experiential learning. NCAT coordinated the first Experience Steam event at the Mall of America in Bloomington, a weeklong event that provided attendees the opportunity to experience Science, technology, engineering, arts and math in action with highly engaging activities. The vision of the event was to inspire students to consider emerging technology and technician career fields.



Northland also has a robust portfolio of offerings delivering education in formats that meets students where they are. Northland's flexible learning labs and schedules work around student's lives and are supported by regional employers. "Northland continues to evolve and innovate within our region to meet the needs of our students and our employers to support a strong vibrant economy" says President Dr. Sandy Kiddoo. As our economy grows so does the expectations of students and we need to continually look for ways to ensure Bold Progress.



## Northland Community & Technical College Student Profile



**3,618**

students enrolled in fy2022



**849**

graduates each year



**30.3%**

pell recipients



**17.6%**

first-generation students attending college



**1:17**

17 students per full time faculty member



**123**

students currently enrolled are veterans

An estimated **\$1,811,389** in charitable donations and volunteer services are generated annually by faculty, staff, and students.

- **\$225,834** donated to local charitable organizations by faculty, staff, and students.
- **\$1,585,555** of volunteer time by faculty, staff, and students.



**NORTHLAND**  
COMMUNITY & TECHNICAL COLLEGE



MINNESOTA STATE

prepared by *Parker Phillips*  
ACCESS ANALYTICS  
January 2023