



# MINNESOTA STATE

Meeting Critical Needs Through Targeted Stewardship

## 2026 CAPITAL REQUEST

[MinnState.edu/legislative](https://MinnState.edu/legislative)

#FundMinnesotaState



**MINNESOTA STATE**

Extraordinary Education. Exceptional Value.

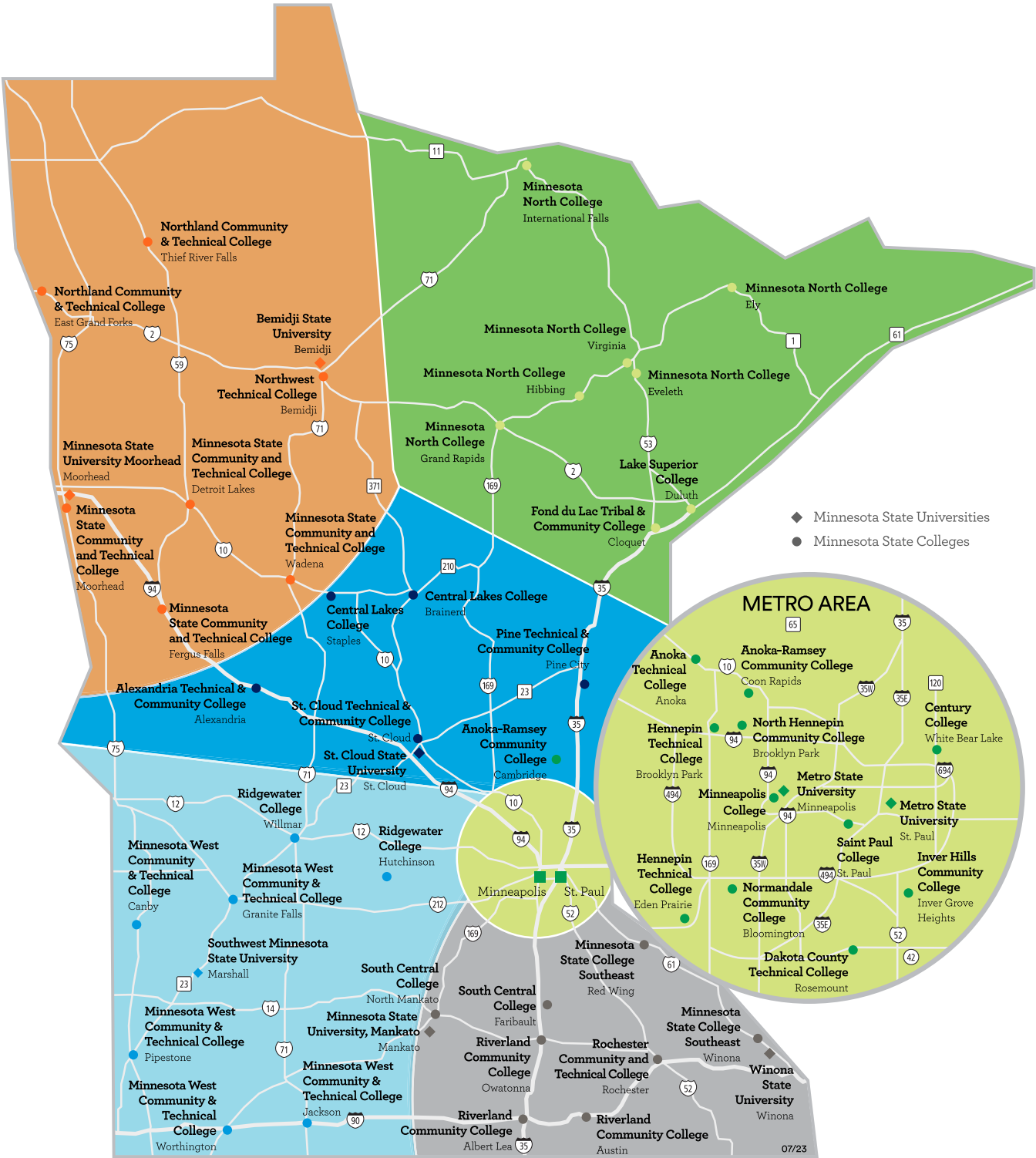


COLLEGES

- Alexandria Technical & Community College
- Anoka Technical College
- Anoka-Ramsey Community College
- Central Lakes College
- Century College
- Dakota County Technical College
- Fond du Lac Tribal and Community College
- Hennepin Technical College
- Inver Hills Community College
- Lake Superior College
- Minneapolis College
- Minnesota North College
- Minnesota State College Southeast
- Minnesota State Community and Technical College
- Minnesota West Community & Technical College
- Normandale Community College
- North Hennepin Community College
- Northland Community & Technical College
- Northwest Technical College
- Pine Technical & Community College
- Ridgewater College
- Riverland Community College
- Rochester Community and Technical College
- Saint Paul College
- South Central College
- St. Cloud Technical & Community College

UNIVERSITIES

- Bemidji State University
- Metro State University
- Minnesota State University, Mankato
- Minnesota State University Moorhead
- Southwest Minnesota State University
- St. Cloud State University
- Winona State University



Letter to Minnesota

Across our great state, the 54 campuses of Minnesota State—

containing nearly 22.5 million square feet of academic buildings—serve Minnesotans by providing hope and opportunity through higher education. We join our students, faculty, and staff in thanking you for your continuous commitment and support to take care of the buildings we have and recognize the need for strategic investment with the funding provided last session for HEAPR and one of the system’s highest priority projects.

To deliver on this responsibility, we seek **\$464 million** in funding in the 2026 legislative session for a capital program that will **improve campus facilities, enhancing our ability to serve our 270,000 students.** These investments, comprising \$384.4 million in state financing and \$79.7 million in college and university support, will directly impact student success through improved teaching, learning, and support spaces.

The top priority for Minnesota State is asset preservation through HEAPR funding.

This request of \$200 million provides for nearly 100 campus projects across the state addressing the most basic needs for updated roofs, windows, and exterior walls, as well as efficient and effective mechanical and utility systems. This funding will help our students, faculty, and staff stay safe, warm, and dry.

In addition, our request includes \$225.5 million for four major, campus-specific capital projects. All of these projects are ready to begin construction, having received design funding in prior legislative sessions. Our request also includes \$38.5 million for two initiatives: demolition and learning environment renovations and equipment.

Together, the requested HEAPR and major capital project funding will:

- » reinvest in buildings and infrastructure to extend and maximize useful life while ensuring the health, safety, and well-being of students, faculty, staff, and community;
- » improve campus teaching and learning environments to improve student outcomes;
- » reduce operating expenses and ease pressure on campus operating budgets; and
- » enhance science, technology, engineering, math, allied health, technical, law enforcement, business, and education classrooms and labs.

Your thoughtful engagement and steadfast support allow us to provide all Minnesotans with access to high-quality, affordable educational programs that prepare our students to thrive.



George Soule, Board of Trustees Chair



Scott Olson, Chancellor

# About Minnesota State

Your 26 state colleges and seven state universities educate 270,000 students from every part of Minnesota. We offer knowledge and skills that are essential to helping our students find high-demand, well-paying jobs—keeping Minnesota’s economy strong.

A vital element in providing an extraordinary education is offering facilities that provide an academic environment where students can effectively learn and develop their skills. With that in mind, our **2026 Capital Request** is focused on keeping our students safe and ensuring they have the learning spaces they need for success.

» Our Core Value

Provide an opportunity for all Minnesotans to create a better future for themselves, for their families, and for their communities.

» Our Core Commitments

Minnesota State colleges and universities play an essential role in growing Minnesota’s economy and opening the doors of educational opportunity to all Minnesotans.

To that end, we:

- » Ensure access to an extraordinary education for all Minnesotans
- » Deliver to students, employers, communities, and taxpayers the highest value/ most affordable higher education option
- » Serve as employers’ partner of choice to meet Minnesota’s workforce and community needs



## Extraordinary Impact

Minnesota State is making a difference. From the students we serve, to our business partners, to those we employ, chances are good you or someone you know has benefited from the work of your state colleges and universities.



third-largest

system of colleges and universities  
in the United States



34,650+

degrees, certificates, and diplomas  
awarded each year



3,968

academic programs



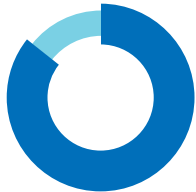
12,000

customized training, occupational,  
and professional classes



7,000

employer partnerships across Minnesota  
State colleges and universities



86% job placement

in a related field of study



270,000 students

served annually, including:

67,624

Black and Indigenous students, and students of color

39,995

first-generation students

6,579

veterans and service members

56,256

low-income students



64% of Minnesota  
resident students

who are pursuing an undergraduate credential are  
doing so at a Minnesota State college or university



# About the Capital Budget

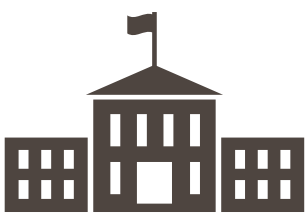
## » The Minnesota State 2026 Capital Request will:

- » Take care of what we have with a focus on asset preservation
- » Maintain the focus on projects that have previously received legislative funding
- » Focus on right sizing our system facilities and investing in equipment and learning environments in high-cost, high need workforce programs



## BY THE NUMBERS

**33** state colleges and universities on **54** campuses in **47** Minnesota communities



**843** academic buildings with



**2,102** classrooms and



**1,869** labs

**301 acres**

of roofs, roughly equivalent to 228 football fields

**2,600**

different pieces of HVAC equipment, such as boilers and air handlers

**28.5 million**

square feet of total facility space, about one-third of the total square footage of state public buildings

**22.5 million**

square feet dedicated to academic and student support space

**6.0 million**

square feet comprised of residence halls, student unions, health/wellness centers, and parking ramps, which are not part of bonding bill requests

Source: VFA Facility

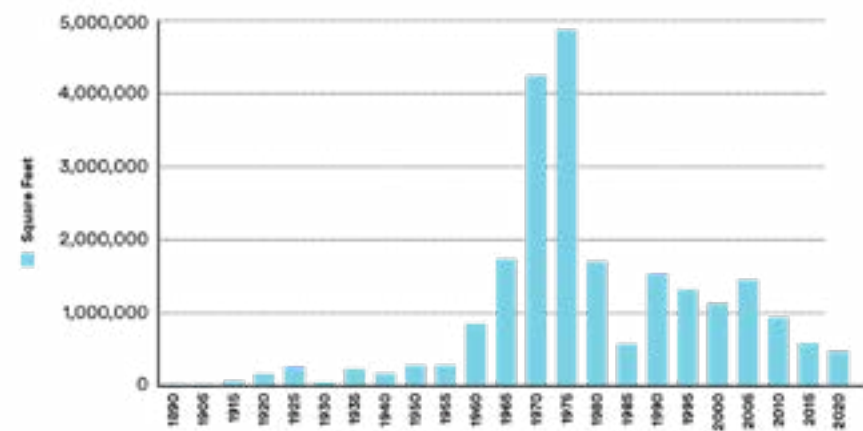
## Why We Need Your Support

### IF FULLY FUNDED, THE 2026 CAPITAL BUDGET WILL:

- » Renovate 315,000 square feet, build 185,000 square feet, and demolish up to 500,000 square feet on campuses
- » Positively impact classrooms and labs on colleges and universities throughout the state, improving student outcomes
- » Reduce the backlog by as much as \$200 million if all HEAPR and individual projects are fully funded
- » Improve the student experience on four campuses with direct impact to more than 8,000 FYE

## APPROACHING MIDDLE AGE

The majority of the Minnesota State academic facilities and related building systems were built between 1965 and 1975, and most are “middle-aged.” While well-kept, they are less efficient than newer buildings and in need of major investment.



Showing five-year construction summary by square footage (e.g., 2020 represents buildings built between 2016 and 2020). Source: VFA Facility (as of June 30, 2022).

## CAPITAL BUDGET PRIORITIES

The Minnesota State 2026 Capital Budget Request includes over \$223.5 million in individual capital projects focused on improving our core academic learning spaces and targeting student service spaces to better serve the needs of all students, including underrepresented and first-generation students attending our institutions.

### When preparing its request, the Board of Trustees:

- » **Sets Priorities.** The Board of Trustees sets capital budget guidelines, which establish project priorities for the colleges and universities as they prepare their submittals for the capital budget cycle.
- » **Relies on Campus Plans.** Colleges and universities draw upon their comprehensive facilities plans and prepare predesigns to develop the scope, estimate costs, and prepare schedules for capital budget requests.
- » **Collects Requests from Campuses.** In an average biennium, Minnesota State considers \$400–\$600 million worth of individual capital project requests and more than \$300 million in requests for asset preservation and replacement through HEAPR.
- » **Prioritizes Most Urgent Needs.** While well-kept, they are less efficient than newer buildings and in need of major investment.

# Bonding Project

7 Northland Community & Technical College  
Thief River Falls

Northland Community & Technical College  
East Grand Forks

Bemidji State University  
Bemidji

6, 7

Northwest Technical College

Minnesota North College  
International Falls

Minnesota North College  
Ely

Minnesota North College  
Virginia

Minnesota North College  
Hibbing

Minnesota North College  
Eveleth



15 cities

16 campuses

---

4 universities

11 colleges

**AND FUND NEARLY 60  
HEAPR PROJECTS ON 35  
CAMPUSES THROUGHOUT  
THE STATE.**

**\$200 MILLION:**

» Higher Education Asset Preservation and Replacement (HEAPR) - *Asset preservation projects at all 26 colleges and 7 universities*

- » Major capital projects at four colleges and universities

- » Systemwide demolition of buildings to reduce our footprint to improve efficiency
- » Targeted renovations for learning environments and equipment creating modern, collaborative spaces

Priority	Institution	Title	2026 Request
1	Systemwide	Higher Education Asset Preservation and Replacement (HEAPR)	\$200,000,000
2	Saint Paul College	Student Services and Classroom Renovation	\$35,300,000
3	Minnesota State University, Mankato	Armstrong Hall Replacement	\$96,900,000
4	Winona State University	Center for Interdisciplinary Collaboration, Engagement, and Learning	\$78,900,000
5	Rochester Community and Technical College	Heintz Center Renovation	\$14,400,000
6	Systemwide	Demolition	\$25,000,000
7	Systemwide	Learning Environments and Equipment	\$13,500,000



# Asset Preservation and Replacement

Higher Education

## SUMMARY

Minnesota State seeks **\$200 million in Higher Education Asset Preservation and Replacement (HEAPR)** funding for repair and replacement of building systems at each of the 33 colleges and universities. This request includes repair and replacement of roofs and exterior building envelopes, plumbing and electrical systems, heating, ventilation and air conditioning (HVAC), and the upgrade of life safety and code issues.

### 2026 ASSET PRESERVATION AND REPLACEMENT (HEAPR) REQUEST

HVAC and roofs represent the largest need and work volume in total dollars. Our 2026 asset preservation and replacement (HEAPR) request falls into the categories and percentages shown at right.

Funding HEAPR projects is an investment in Minnesota’s future workforce. Every academic program—from Accounting to Welding—depends on safe, reliable, and modern facilities to deliver hands-on learning and real-world skills. When classrooms, labs, and training spaces are supported by well-maintained roofs, HVAC systems, and infrastructure, students can focus on learning without disruption. HEAPR ensures that colleges and universities remain competitive, preparing graduates for high-demand careers and strengthening Minnesota’s economy.

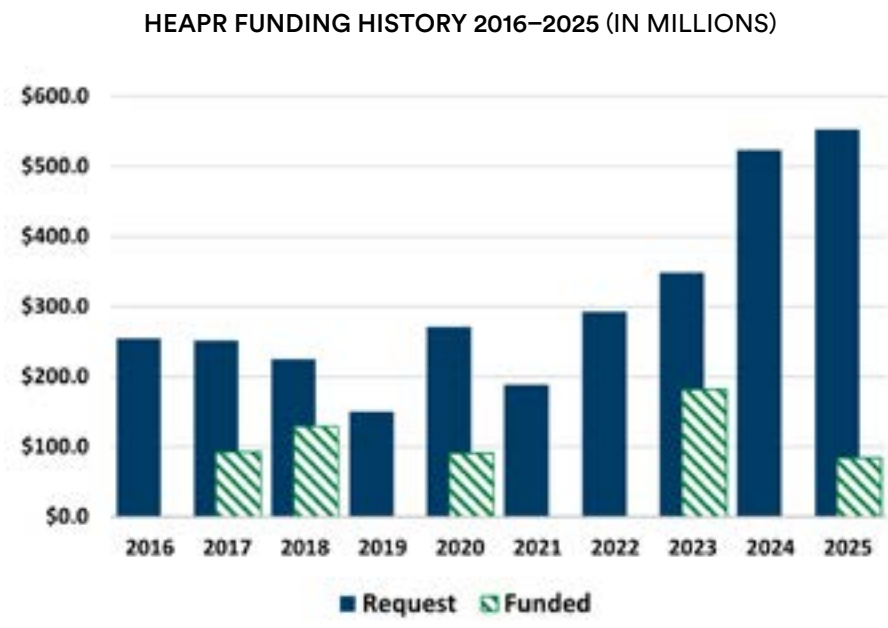
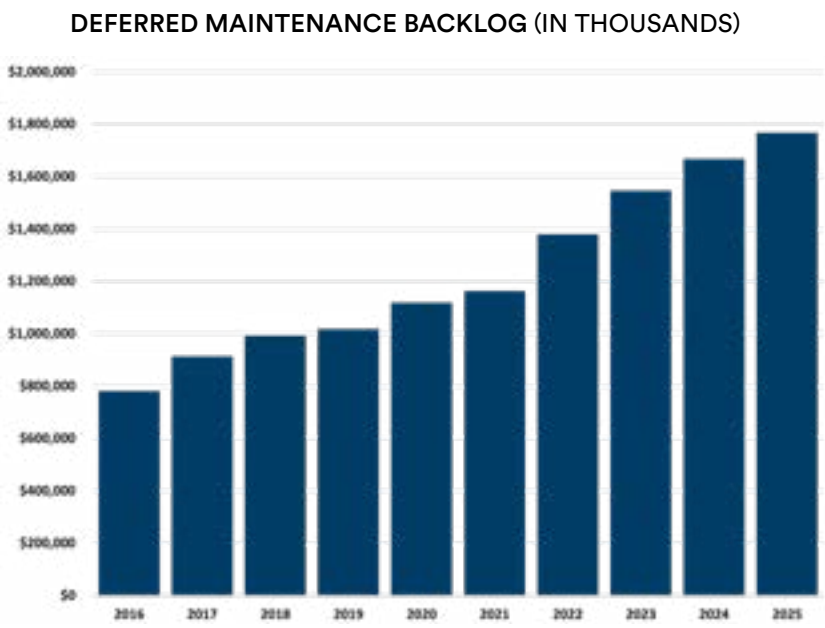
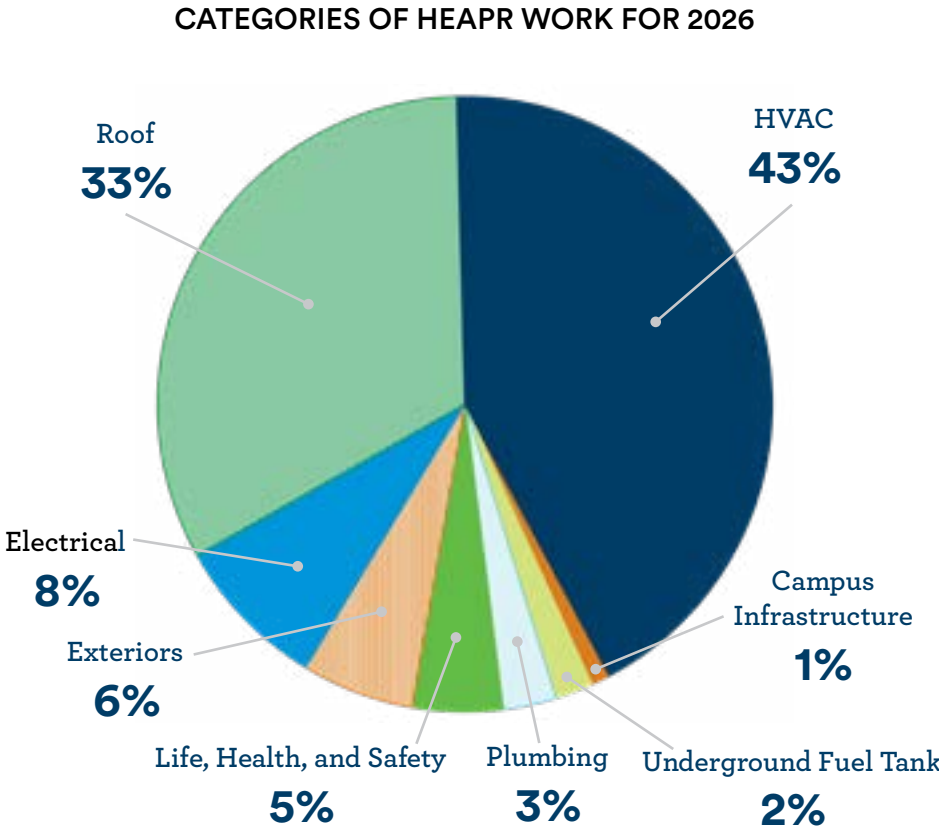
## Why is HEAPR Crucial?

- » Keeps students and faculty safe, warm, and dry
- » Ensures that campus operating dollars are dedicated directly to improving educational outcomes instead of repairing buildings
- » Reduces risk of water leaks, interior damage, mold, inadequate ventilation, or energy inefficiencies
- » Reduces the immediate deferred maintenance outlook (currently \$1.73 billion and climbing)
- » Aligns state and Minnesota State objectives for creating sustainable buildings



## ASSET PRESERVATION AND REPLACEMENT (HEAPR) FUNDING HISTORY AND BACKLOG GROWTH

Since 2012, Minnesota State has requested more than \$1 billion and received \$223.5 million in Asset Preservation and Replacement (HEAPR) appropriations to address building conditions at our colleges and universities. The graphs below show the year by year request and appropriation levels, and the growth of the Minnesota State backlog of deferred maintenance.





AT-A-GLANCE: 2026 Asset Preservation and Replacement Projects

Projects as of October 2025, subject to change.

Alexandria Technical & Community College

PRIORITY PROJECTS: HVAC, Roof

Anoka Technical College

PRIORITY PROJECTS: Roof, Electrical

Anoka-Ramsey Community College

PRIORITY PROJECTS: HVAC

Bemidji State University

PRIORITY PROJECTS: HVAC, Underground Fuel Tank

Central Lakes College

PRIORITY PROJECTS: Roof

Century College

PRIORITY PROJECTS: HVAC, Roof

Dakota County Technical College

PRIORITY PROJECTS: Electrical

Fond du Lac Tribal and Community College

PRIORITY PROJECTS: Life, Health, and Safety

Hennepin Technical College

PRIORITY PROJECTS: Roof

Inver Hills Community College

PRIORITY PROJECTS: Roof

Lake Superior College

PRIORITY PROJECTS: Roof

Metro State University

PRIORITY PROJECTS: Plumbing, Life, Health, and Safety, HVAC, Exteriors

Minneapolis College

PRIORITY PROJECTS: Roof

Minnesota North College

PRIORITY PROJECTS: Roof

Minnesota State College Southeast

PRIORITY PROJECTS: Exteriors

Minnesota State Community and Technical College

PRIORITY PROJECTS: HVAC



LAKE SUPERIOR COLLEGE: roof deterioration

MINNESOTA STATE MOORHEAD: concrete deterioration



MINNESOTA STATE MANKATO: exteriors

RIDGEWATER COLLEGE: air handler



MINNESOTA STATE MANKATO: HVAC

ST. CLOUD STATE UNIVERSITY: utility tunnels

Minnesota State University, Mankato

PRIORITY PROJECTS: HVAC, Electrical, Exteriors

Minnesota State University Moorhead

PRIORITY PROJECTS: HVAC, Campus Infrastructure

Minnesota West Community & Technical College

PRIORITY PROJECTS: HVAC

Normandale Community College

PRIORITY PROJECTS: Roof, Exteriors

North Hennepin Community College

PRIORITY PROJECTS: HVAC

Northland Community & Technical College

PRIORITY PROJECTS: Electrical, Roof

Northwest Technical College

PRIORITY PROJECTS: Life, Health, and Safety

Pine Technical & Community College

PRIORITY PROJECTS: Plumbing

Ridgewater College

PRIORITY PROJECTS: HVAC

Riverland Community College

PRIORITY PROJECTS: HVAC

Rochester Community and Technical College

PRIORITY PROJECTS: Roof

Saint Paul College

PRIORITY PROJECTS: Exteriors

South Central College

PRIORITY PROJECTS: HVAC

Southwest Minnesota State University

PRIORITY PROJECTS: HVAC

St. Cloud State University

PRIORITY PROJECTS: Roof, Campus Infrastructure, HVAC

St. Cloud Technical & Community College

PRIORITY PROJECTS: Roof

Winona State University

PRIORITY PROJECTS: Electrical, Roof, Life, Health, and Safety



## Student Services and Classroom Renovation

RENOVATION · DEMOLITION

**\$35,300,000**

**RENOVATES:** 116,500 GSF  
**DEMOLISHES:** 13,000 GSF

**DEFERRED MAINTENANCE REDUCTION:** \$7.2 million



Saint Paul College  
saintpaul.edu  
@StPaulCollege



Current design and layout



Interior design rendering

### » STUDENT IMPACT

Ensures that students have improved access to modern, relevant, functional, and appealing instructional spaces that support **high-demand services and programs**.

## Armstrong Hall Replacement, Phase II

RENOVATION · CONSTRUCTION · DEMOLITION

**\$96,900,000**

**RENOVATES:** 68,000 GSF  
**RENEWS:** 5,000 GSF  
**DEMOLISHES:** 144,000 GSF  
**CONSTRUCTS:** 113,000 GSF

**DEFERRED MAINTENANCE REDUCTION:** \$40.8 million



Minnesota State  
University, Mankato  
mnsu.edu  
@MNSUMankato



Exterior design rendering



Interior design rendering

### » STUDENT IMPACT

By replacing half of the classrooms on campus through the replacement of Armstrong Hall, this project impacts **nearly every student** who attends the university.



## Center for Interdisciplinary Collaboration, Engagement, and Learning

CONSTRUCTION · DEMOLITION

**\$78,900,000**

**CONSTRUCTS:** 73,350 GSF  
**DEMOLISHES:** 78,333 GSF

**DEFERRED MAINTENANCE REDUCTION:** \$13.2 million



**Winona State University**  
winona.edu  
@winonastateu

### SUMMARY

- » Received \$4.9 million in 2023 for design
- » Constructs the replacement of Gildemeister and Watkins Halls as a new, highly efficient and sustainable building and creates an inviting gateway into campus
- » Creates classroom, lab, and studio spaces serving growing demand careers in art and design, computer science, and math and statistics
- » Constructs flexible and innovative spaces, including highly visible studio/lab spaces that support collaborative learning
- » Promotes campus-wide interdisciplinary learning
- » Incorporates academic support services among classrooms and labs, improving student access to services



Exterior design rendering



Interior design rendering

### » STUDENT IMPACT

The new building will create innovative, **interdisciplinary learning spaces** to support students and faculty in five different colleges within the university.

## Heintz Center Renovation

RENOVATION

**\$14,400,000**

**RENOVATES:** 57,400 GSF  
**RENEWS:** 3,700 GSF

**DEFERRED MAINTENANCE REDUCTION:** \$2.0 million



**Rochester Community and Technical College**  
rctc.edu  
@RochesterCTC

### SUMMARY

- » Received \$1.35 million in 2023 for design
- » Serves Career and Technical Education (CTE), Facility and Service Technology (FAST), Law Enforcement, CAD, and Welding Technology programs
- » Serves more than one-third of all programs, specifically art and design, computer science, and mathematics and statistics
- » Renovates and renews the 1100 and 1200 suites in Heintz Center to consolidate program spaces and create safe and modern learning spaces
- » Modernizes spaces for Career and Technical Education (CTE) programs
- » Creates greater visibility for CTE programs to increase recruitment of students
- » Renovates spaces for collaboration and student success

### » STUDENT IMPACT

Creates state-of-the-art, **accessible spaces for high-demand programs** and enhances study and student support areas.



Interior design rendering



Interior collaboration area design rendering



## Systemwide Demolition

DEMOLITION

**\$25,000,000**

**DEMOLISHES:** Up to 500,000 SF of obsolete space

**DEFERRED MAINTENANCE REDUCTION:** Approximately \$100 million



Systemwide  
MinnState.edu  
@MinnStateEdu

### SUMMARY

- » Reduces long-term operating and maintenance costs
- » Improves campus safety and appearance
- » Enhances recruitment and retention efforts
- » Focuses future capital investments on higher-impact, higher-use facilities
- » Support sustainability goals by eliminating energy-inefficient structures
- » Vacant or deteriorating buildings send the wrong message—one of decline rather than innovation and investment

### » STUDENT IMPACT

Removing outdated buildings **lowers tuition pressures through reduced maintenance, energy, and repair costs.** It also improves campus safety, aesthetics, and competitiveness—key factors in how prospective students and families evaluate their college experience.

## Learning Environments and Equipment

RENOVATION

**\$13,500,000**

**RENOVATES:** 70,000 SF

**DEFERRED MAINTENANCE REDUCTION:** \$1.5 million



Systemwide  
MinnState.edu  
@MinnStateEdu

### SUMMARY

- » Renovates space at five universities and six technical and community colleges
- » Provides students with access to state-of-the-art learning environments for career and technical education and applied research laboratories
- » Invests in high demand programs across Minnesota
- » Keeps Minnesota State programs competitive and attractive to Minnesota students
- » Provides Minnesota employers with well trained and educated employees in high demand workforce fields
- » Funds will prioritize simulation labs, workshop and equipment upgrades, applied clinical learning spaces, industry certification and testing centers, and applied teaching laboratories

### » STUDENT IMPACT

Investing in the renovation of aging Minnesota State career and technical education facilities will **empower students with access to modern, industry-aligned learning environments**—ensuring they graduate ready to meet the demands of Minnesota’s workforce and drive the state’s economic vitality.

## BOARD OF TRUSTEES

George Soule, Chair

Dawn Erlandson, Vice Chair

Rennato Alarcon

Jay Cowles

Jim Grabowska

Tim Huebsch

Jerry Janezich

Jacqueline Johnson

Jana Johnson

Roger Moe

Christopher Richter

Kathy Sheran

Cheryl Tefer

Willam Tully

## PRESIDENTS

Michael Seymour

*Alexandria Technical & Community College*

Kent Hanson

*Anoka Technical College and Anoka-Ramsey Community College*

John Hoffman

*Bemidji State University and Northwest Technical College*

Hara Charlier

*Central Lakes College*

Angelia Millender

*Century College*

Michael Berndt

*Dakota County Technical College and Inver Hills Community College*

Anita Hanson

*Fond du Lac Tribal and Community College*

Joy Bodin

*Hennepin Technical College*

Linda Kingston

*Lake Superior College*

Ginny Arthur

*Metro State University*

Sharon Pierce

*Minneapolis College*

Michael Raich

*Minnesota North College*

Marsha Danielson

*Minnesota State College Southeast*

Carrie Brimhall

*Minnesota State Community and Technical College*

Edward Inch

*Minnesota State University, Mankato*

Timothy Downs

*Minnesota State University Moorhead*

Terry Gaalswyk

*Minnesota West Community & Technical College*

Pakou Yang (Interim)

*Normandale Community College*

Rolando Garcia

*North Hennepin Community College*

Shari Olson

*Northland Community & Technical College*

Joe Mulford

*Pine Technical & Community College*

Craig Johnson

*Ridgewater College*

Kathleen Linaker

*Riverland Community College*

Jeffery Boyd

*Rochester Community and Technical College*

Deidra Peaslee

*Saint Paul College*

Ritu Raju

*South Central College*

David Jones (Interim)

*Southwest Minnesota State University*

Gregory Tomso

*St. Cloud State University*

Lori Kloos

*St. Cloud Technical & Community College*

Kenneth Janz

*Winona State University*





# *Thank you!*



#FundHEAPR



**MINNESOTA STATE**

Extraordinary Education. Exceptional Value.

[MinnState.edu](https://MinnState.edu)

 [X.com/MinnStateEdu](https://X.com/MinnStateEdu)