



MINNESOTA STATE
Career and Technical Education



**DEPARTMENT
OF EDUCATION**

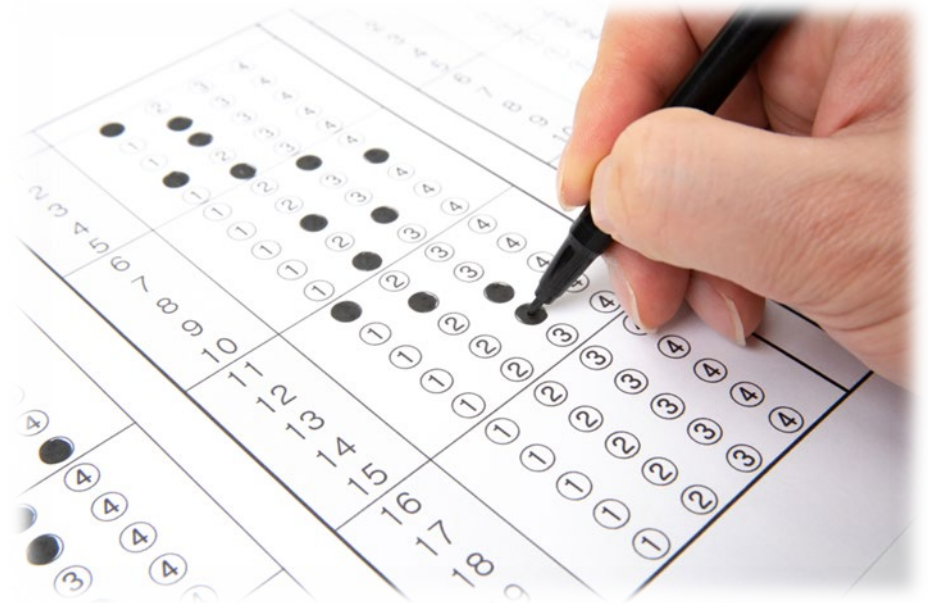
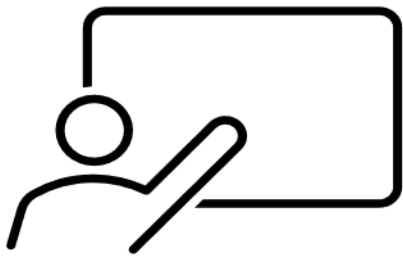
Perkins Grant Reallocation Process

For reallocation of funds remaining from 2024-2025 Program Year

January 8th, 2026

Outcomes

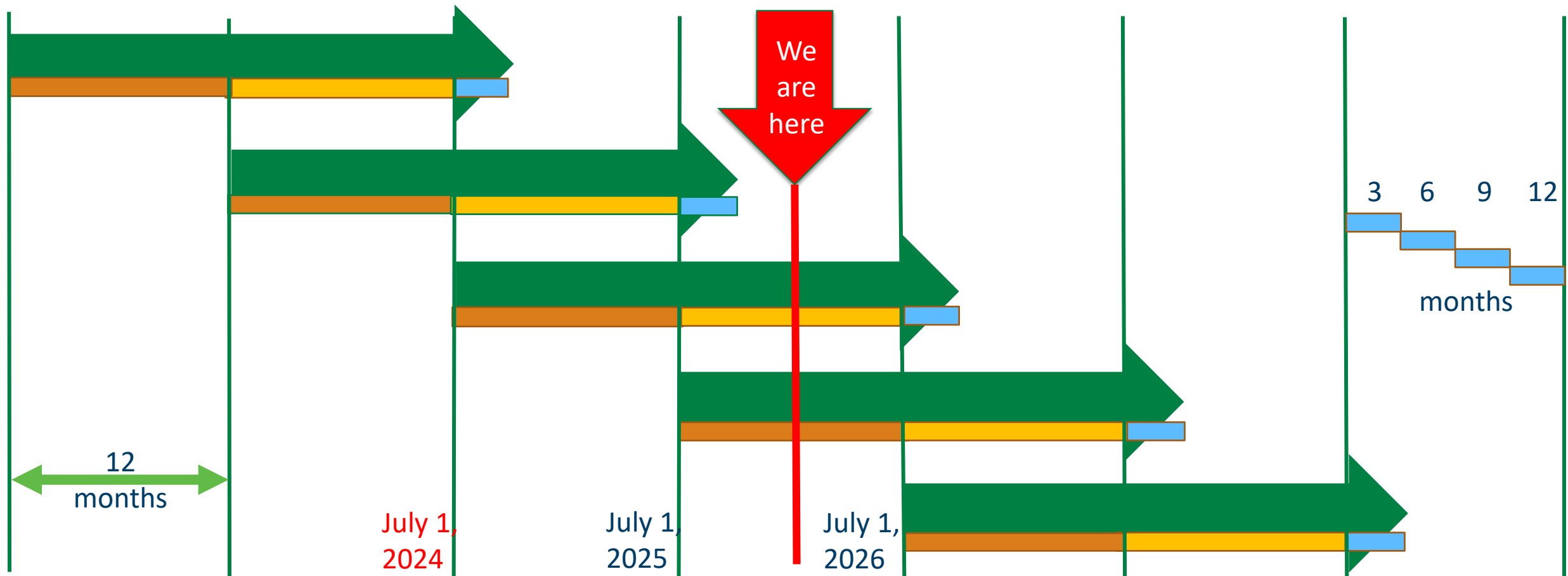
- » Understand why reallocation of funds is necessary
- » Understand the approval process for reallocation spending



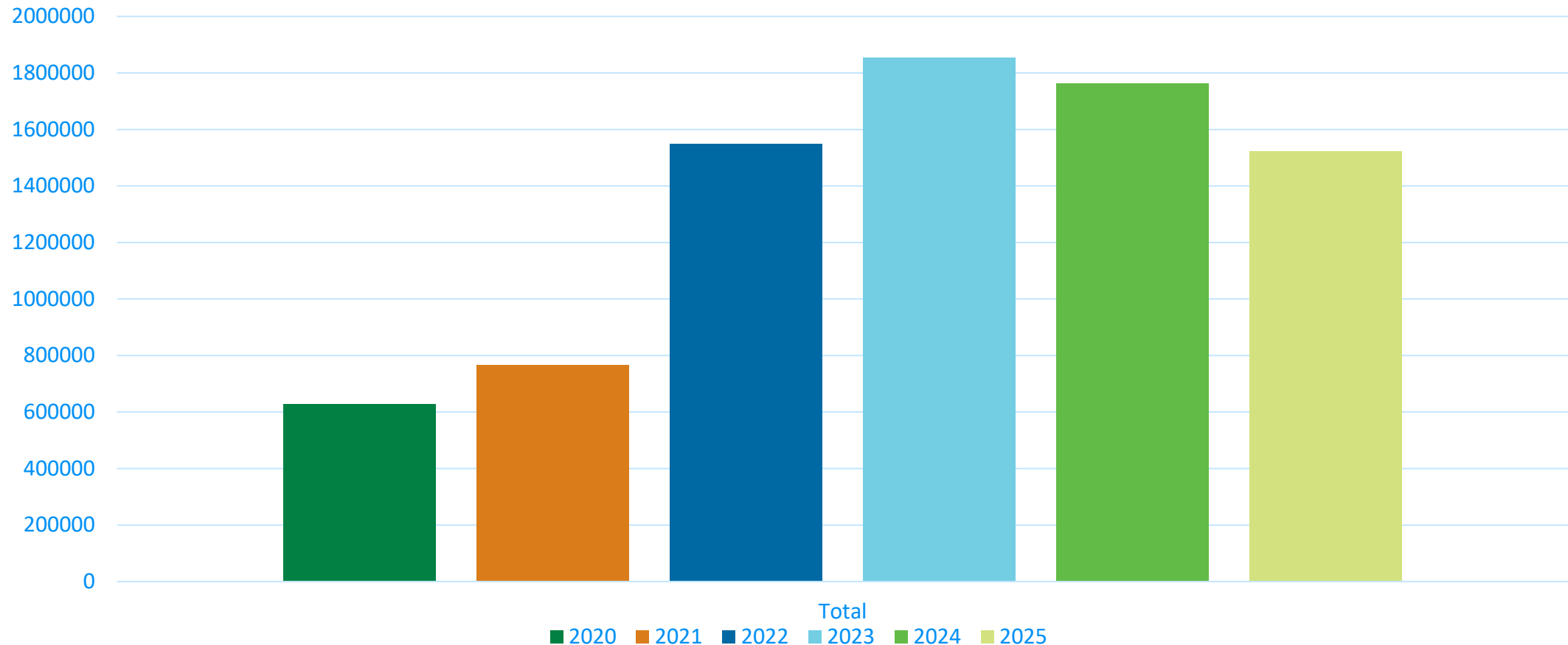
Reallocation

- » Perkins V, Section 133(b)
- » Federal Perkins funds not expended at the local level within the academic year are returned to the state for redistribution
- » Perkins grant funds awarded July 1, 2024
- » FIFO – All reallocated funds must be drawn down before funds awarded in July 2025
- » Review your local approved application and determine where to apply reallocated funds

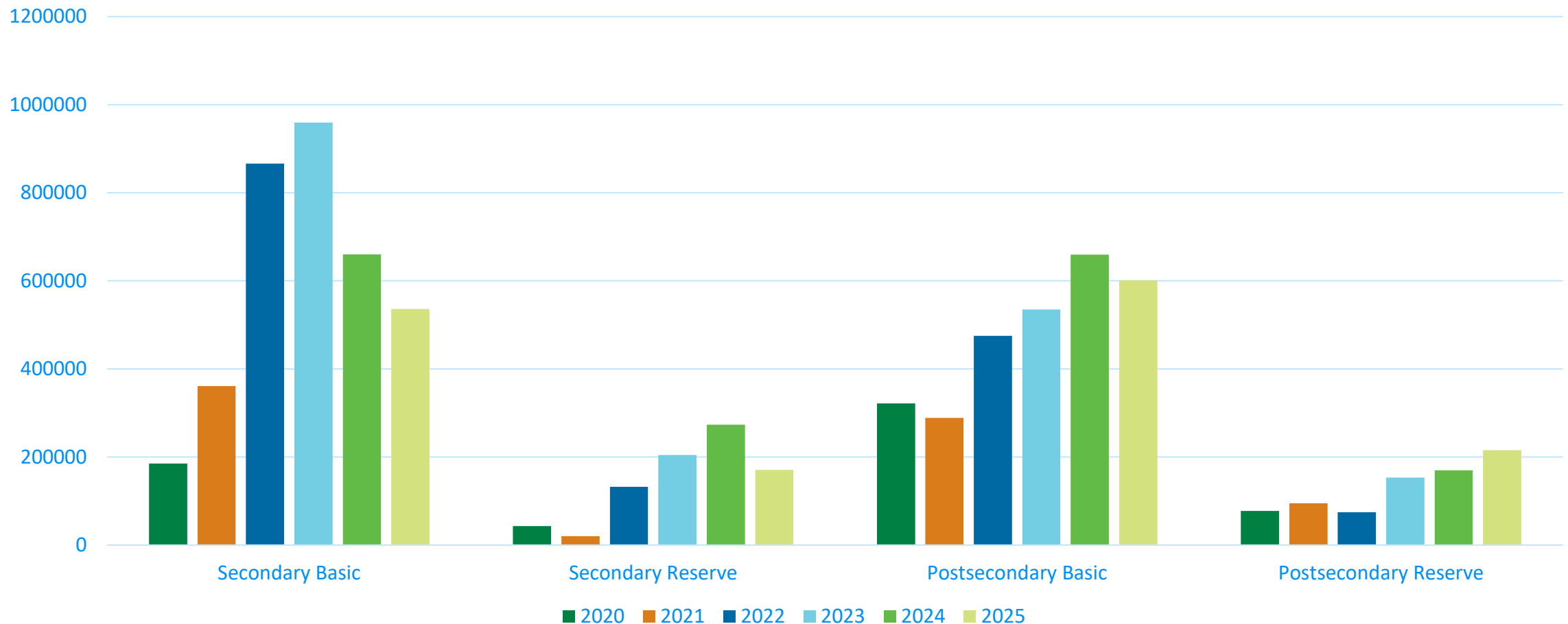
27-month timeframe



Perkins Reallocation Comparison 2020-2025



Perkins Reallocation Comparison 2020-2025



Reallocation Amounts by Consortium 2025

» Average Reallocation -- \$66,212



Process

Email to
consortia

Consortia
return
completed
plan by
due date

State staff
review

Follow-up
with
consortia

State staff
approval

Consortia
draw down
funds by
June 30,
2026

Reallocation Spreadsheet

Your Consortium Name			
Reallocation Amounts	Basic	Reserve	Sec/PS Subtotals
Secondary Allocation:	\$15,590.87	\$13,773.21	\$29,364.08
Postsecondary Allocation:	\$8,953.68	\$1,880.27	\$10,833.95
Total Consortium Allocation:	\$24,544.55	\$15,653.48	\$40,198.03

[illegible]

Reallocation Narrative

▪ 2026 Reallocation Narrative ¶

▪ Instructions for completion ¶

Enter your Consortium Name Here: ¶

Describe how your consortium plans to apply this reallocation award to your current consortium application budget. Expenditures must align with your current approved consortium application implemented July 1, 2025. ¶

Your Plan and Budget must address all four components: ¶

- * Secondary Basic ¶

- * Secondary Reserve ¶

- * Postsecondary Basic ¶

- * Postsecondary Reserve ¶

Utilization of reserve funds must follow the Perkins V guidelines specific to these funds (Section 112(c)). Funds should be expended in the same categories as your current application. Spending categories for reserve are: ¶

- * Performance Gaps ¶

- * Develop or Improve Programs of Study ¶

▪ Enter your text below: ¶

MN Career Fields & Clusters

These Are Rough Comparisons

Original Fields	New Cluster Groupings (MN still calls them Fields)
Agriculture, Foods, & Natural Resources	Cultivating Resources
Arts, Communication, & Information Technology	Creating & Experiencing
Business, Management, & Administration	Investing in the Future
Engineering, Manufacturing & Technology	Building & Moving
Health Science Technology	Caring for Communities
Human Services	Caring for Communities
Center of Wheel (Foundational Knowledge & Skills)	Career Ready Practices

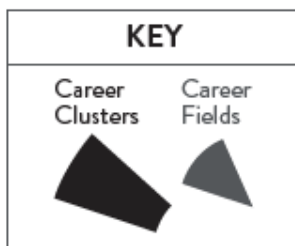
Cluster to Cluster Comparison

Original Cluster	MN New Clusters
Agriculture, Food & Natural Resources	Agriculture
	Energy & Natural Resources
Architecture & Construction	Construction
Arts, A/V Technology & Communication	Arts, Entertainment, & Design
Business Management & Administration	Management & Entrepreneurship
Education & Training	Education
Finance	Financial services
Government & Public Administration	Public Service & Safety
Law, Public Safety, Corrections, & Security	
Health Science	Healthcare
Human Services	Human Services
Hospitality & Tourism	Hospitality, Events, & Tourism
Information Technology	Digital Technology
Manufacturing	Advanced Manufacturing
STEM	
Marketing	Marketing & Sales
Transportation, Distribution, & Logistics	Supply Chain & Transportation

Field to Cluster Alignment

Fields	Cultivating Resources	Creating & Experiencing	Investing in the Future	Building & Moving	Caring for Communities
Clusters	Agriculture	Arts, Entertainment, & Design	Financial Services	Advanced Manufacturing	Education
	Energy & Natural Resources	Hospitality, Events, & Tourism	Management & Entrepreneurship	Construction	HealthCare
			Marketing & Sales	Supply Chain & Transportation	Human Services
			Digital Technology (5 of 6 POS)	Digital Technology (1 of 6 POS)	Public Services & Safety

Minnesota Career Fields and Clusters

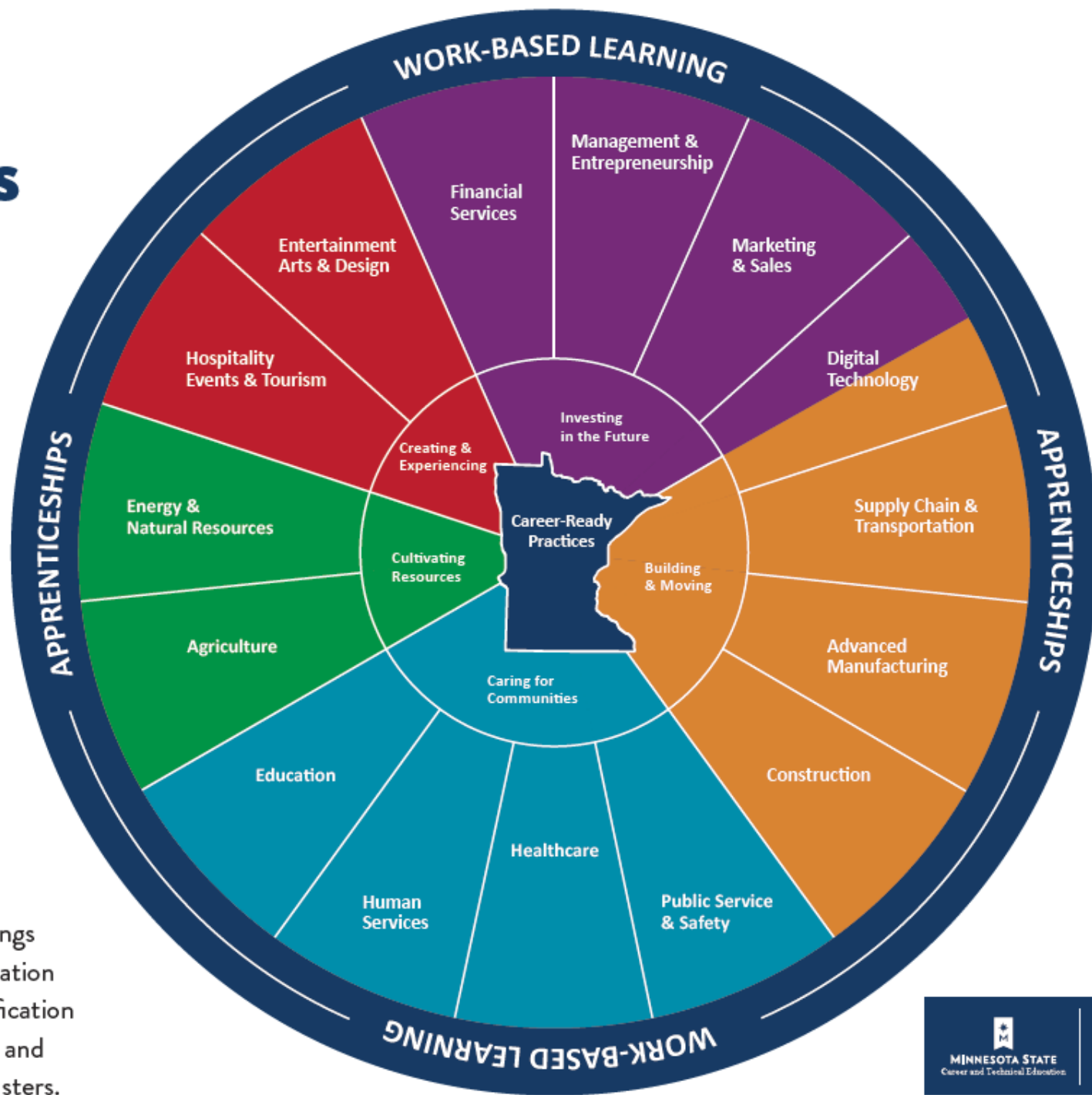


Career Fields (5)

Large purpose-driven sectors that help guide learners toward Clusters that are aligned with their interests, their sense of purpose, and the impact they want to make.

Career Clusters (15)

Industry sectors as defined by groupings from Standard Occupations Classification and North American Industry Classification System codes. Work-Based Learning and Apprenticeships are integral to all clusters.



Cluster to Programs of Study Alignment

Cluster	Agriculture	Advanced Manufacturing	Arts, Entertainment, & Design	Construction
Programs of Study	Agribusiness	Engineering	Design & Digital Arts	Architecture & Civil Engineering
	Agricultural Technology & Automation	Industrial Machinery	Fashion & Interiors	Construction, Planning, & Development
	Animal Systems	Production & Automation	Fine Arts	Equipment Operation & Maintenance
	Food Science & Processing	Robotics	Light & Sound Technology	Skilled Trades
	Plant Systems	Safety & Quality Assurance	Media Production & Broadcasting	
	Water Systems		Performing Arts	
			Production & Automation	

Cluster to Programs of Study Alignment

Cluster	Digital Technology (Investing Future)	Digital Technology (Building Moving)	Education	Energy & Natural Resources
Programs of Study	Data Science & AI	Uncrewed Vehicle Technology	Early Childhood Development	Clean & Alternative Energy
	IT Support and Services		Education Leadership & Training	Conservation & Land Management
	Network Systems & Cybersecurity		Learner Support & Community Engagement	Ecological Research & Development
	Software Solutions		Teaching, Training, & Facilitation	Environmental Protection
	Web & Cloud			Resource Extraction
				Utilities

Cluster to Programs of Study Alignment

Cluster	Financial Services	HealthCare	Hospitality & Tourism	Human Services
Programs of Study	Accounting	Biotechnology Research and Development	Accommodations	Behavioral & Mental Health
	Banking & Credit	Health Data & Administration	Conferences & Events	Community & Social Services
	Financial Strategy & Investment	Physical Health	Culinary & Food Services	Personal Care Services
	Insurance		Travel & Leisure	
	Real Estate			

Cluster to Programs of Study Alignment

Cluster	Management & Entrepreneurship	Marketing & Sales	Public Services & Safety	Supply Chain & Transportation
Programs of Study	Business Information Management	Marketing & Advertising	Emergency Response	Air & Space Transportation
	Entrepreneurship & Small Business	Marketing Research, Analytics, & Ethics	Judicial Systems	Ground & Rail Transportation
	Leadership & Operations	Retail & Customer Experience	Local, State, & Federal Services	Maintenance & Repair
	Project Management	Strategic Sales	Military & National Security	Marine Transportation
	Regulation		Public Safety	Planning & Logistics
				Purchasing
				Safety & Quality Assurance

Thank you.



MINNESOTA STATE
Career and Technical Education

30 East 7th Street, Suite 350
St. Paul, MN 55101-7804

651-201-1800
888-667-2848

MinnState.edu/system/cte



**DEPARTMENT
OF EDUCATION**

400 Stinson Boulevard Northeast
Minneapolis, MN 55413

651-582-8200

education.mn.gov/mde

This document is available in alternative formats to individuals with disabilities. To request an alternate format, contact State Staff at 651-201-1650.
Individuals with hearing or speech disabilities may contact us via their preferred Telecommunications Relay Service.
Minnesota State is an affirmative action, equal opportunity employer and educator.