

# Long-Term Financial Sustainability



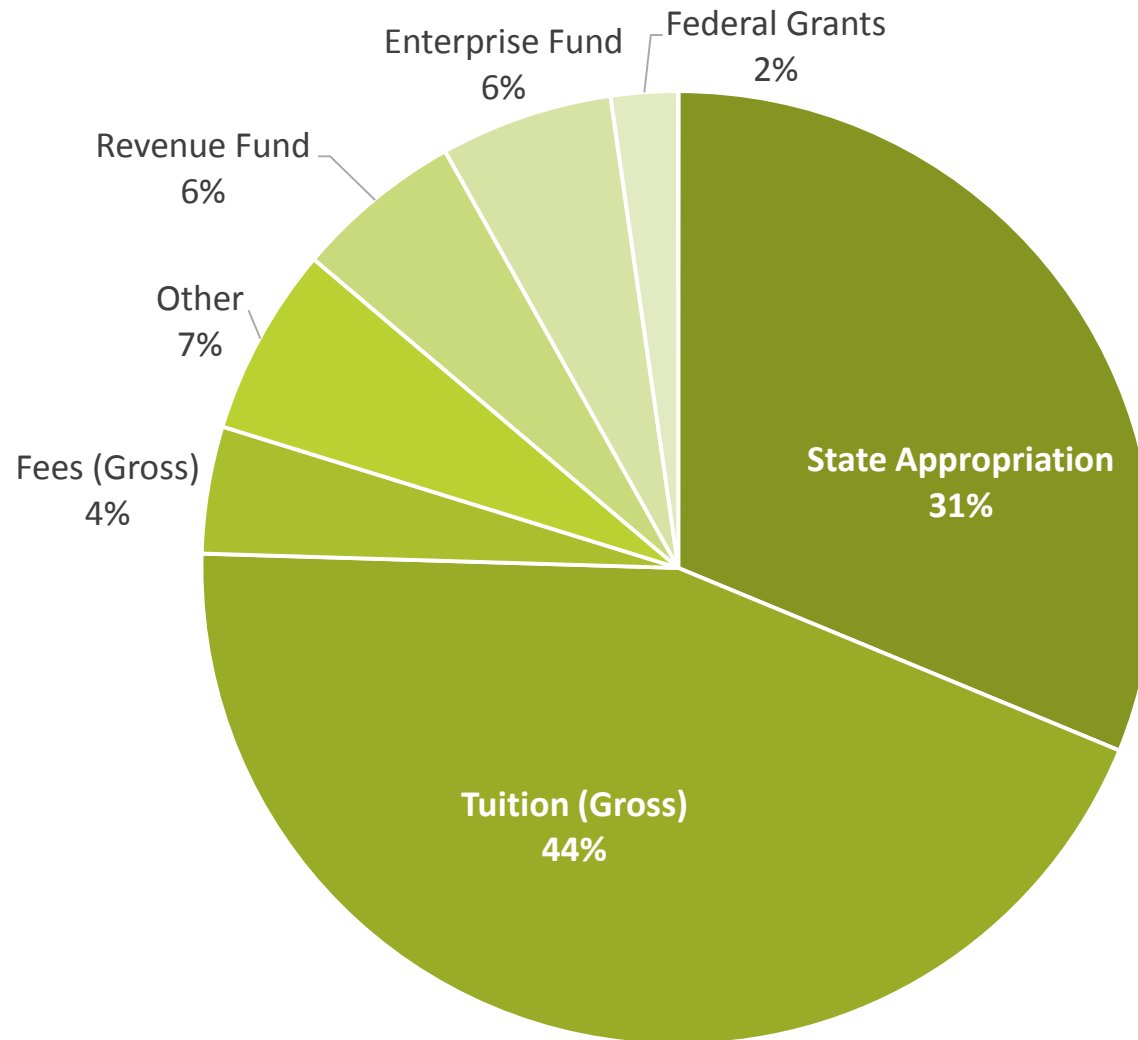
November 12, 2015

## Minnesota State Colleges and Universities

The Minnesota State Colleges and Universities system is an Equal Opportunity employer and educator.

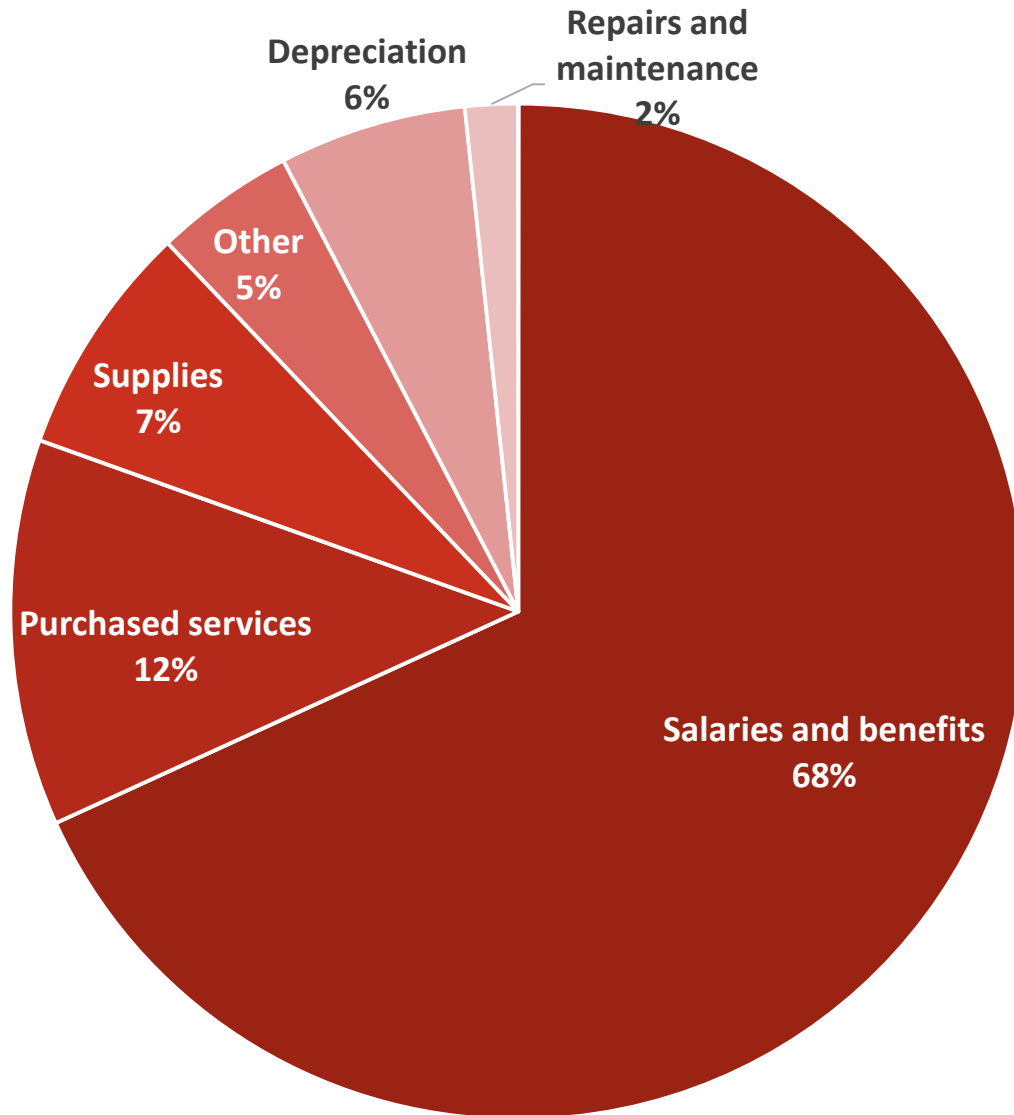


# FY2014 All Funds Revenues



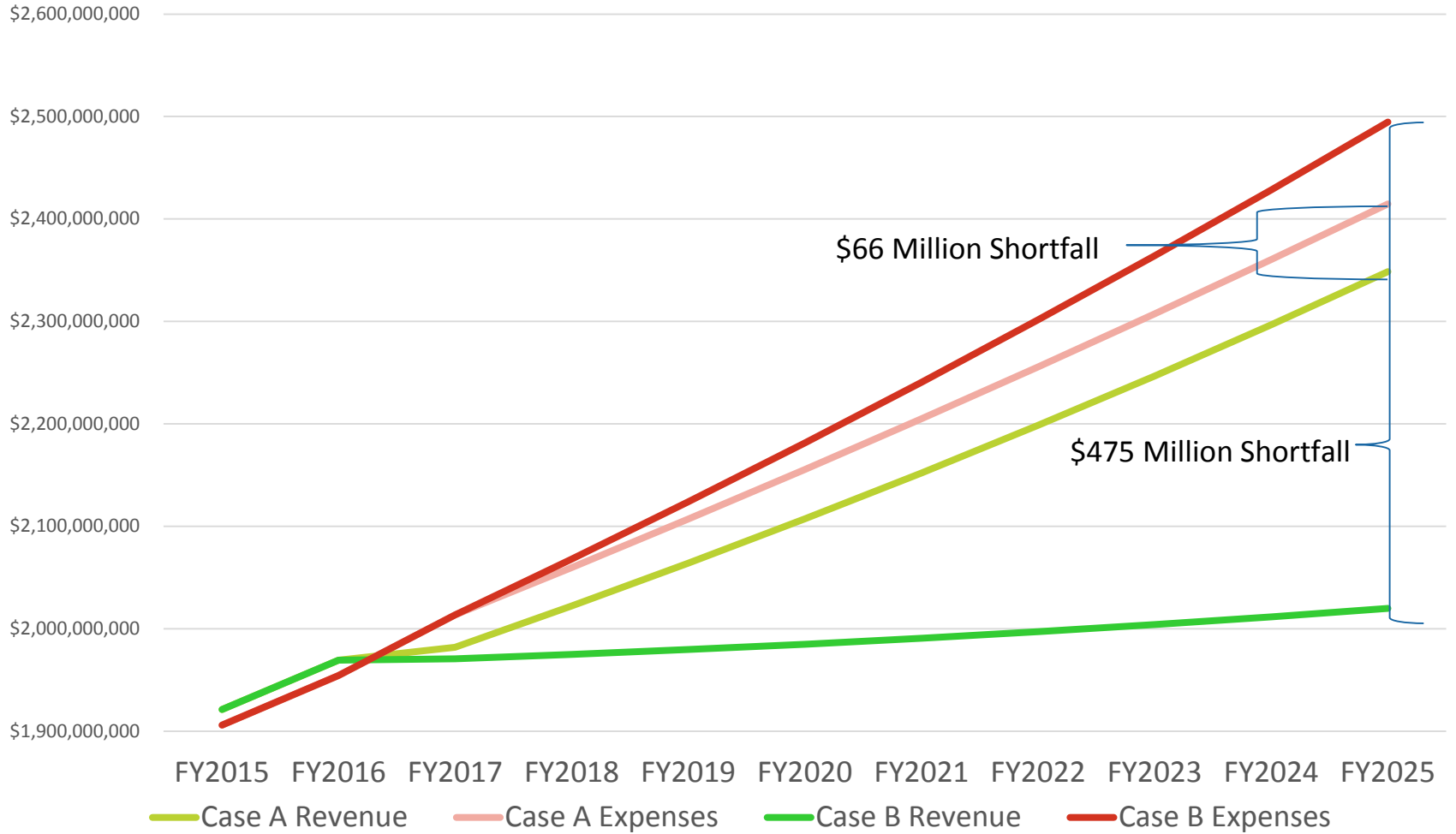
\$1.9 billion

# FY2014 All Funds Expenses

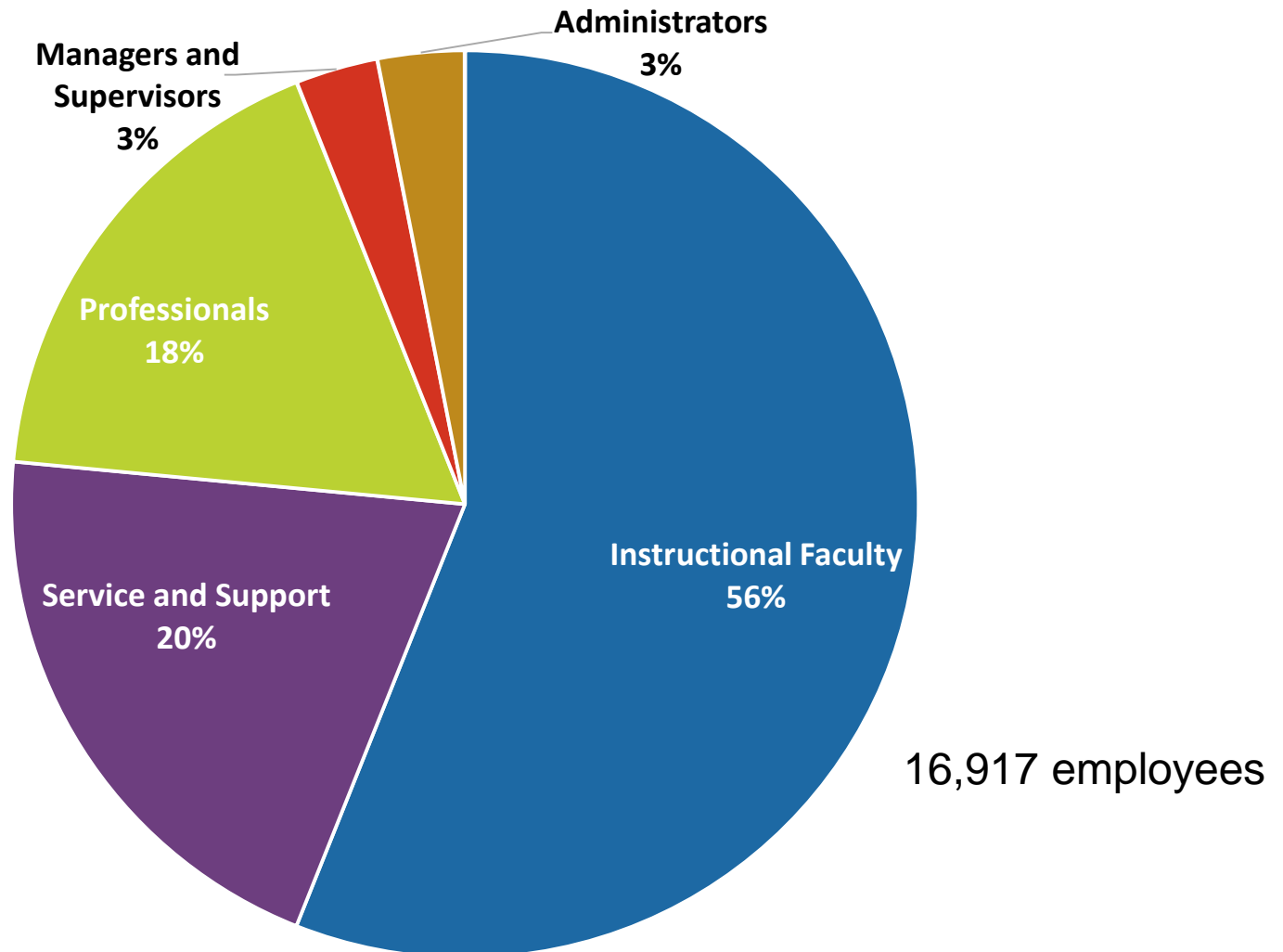


\$1.9 billion

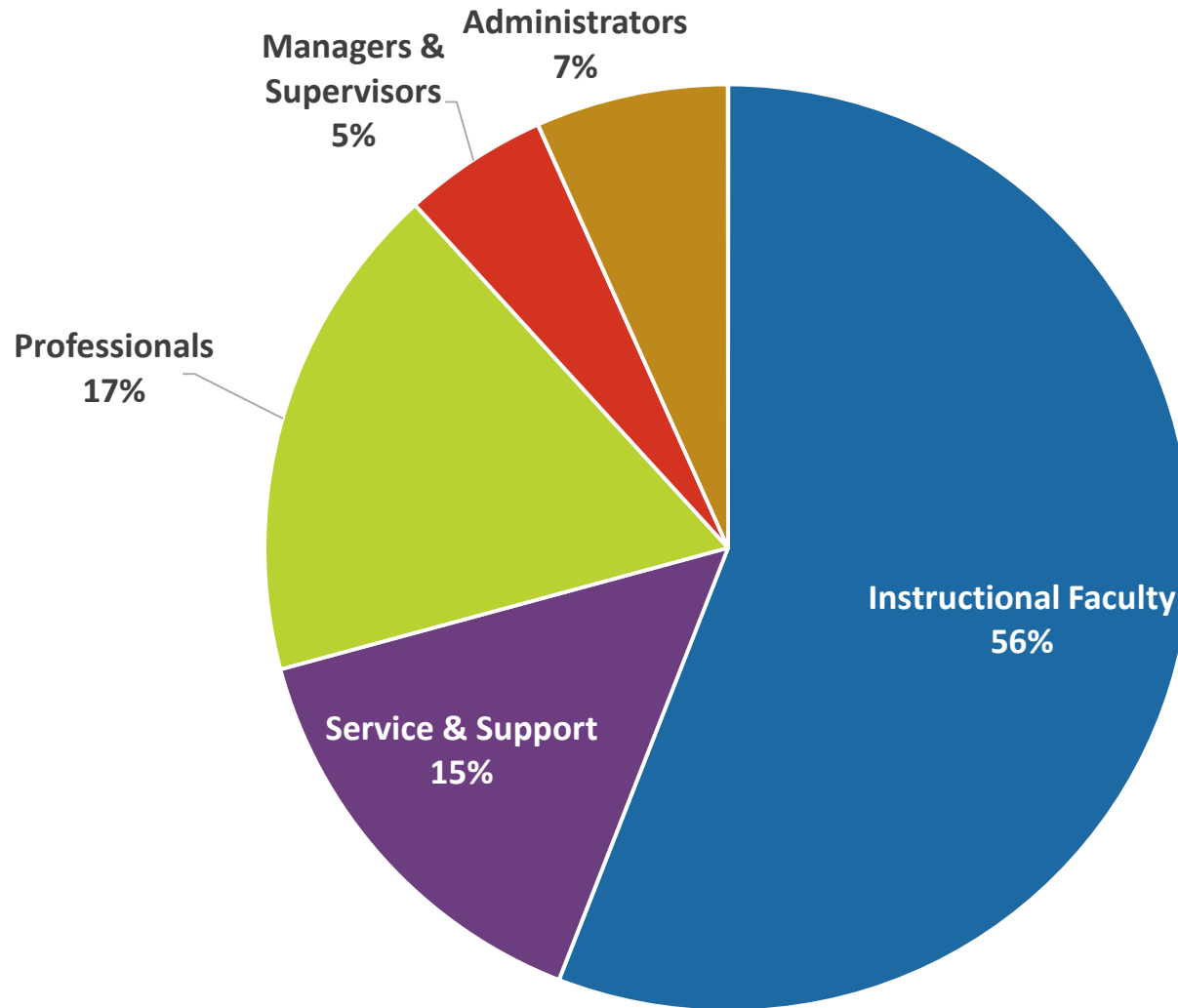
# Revenue and Expense Scenarios



# Employee Headcount

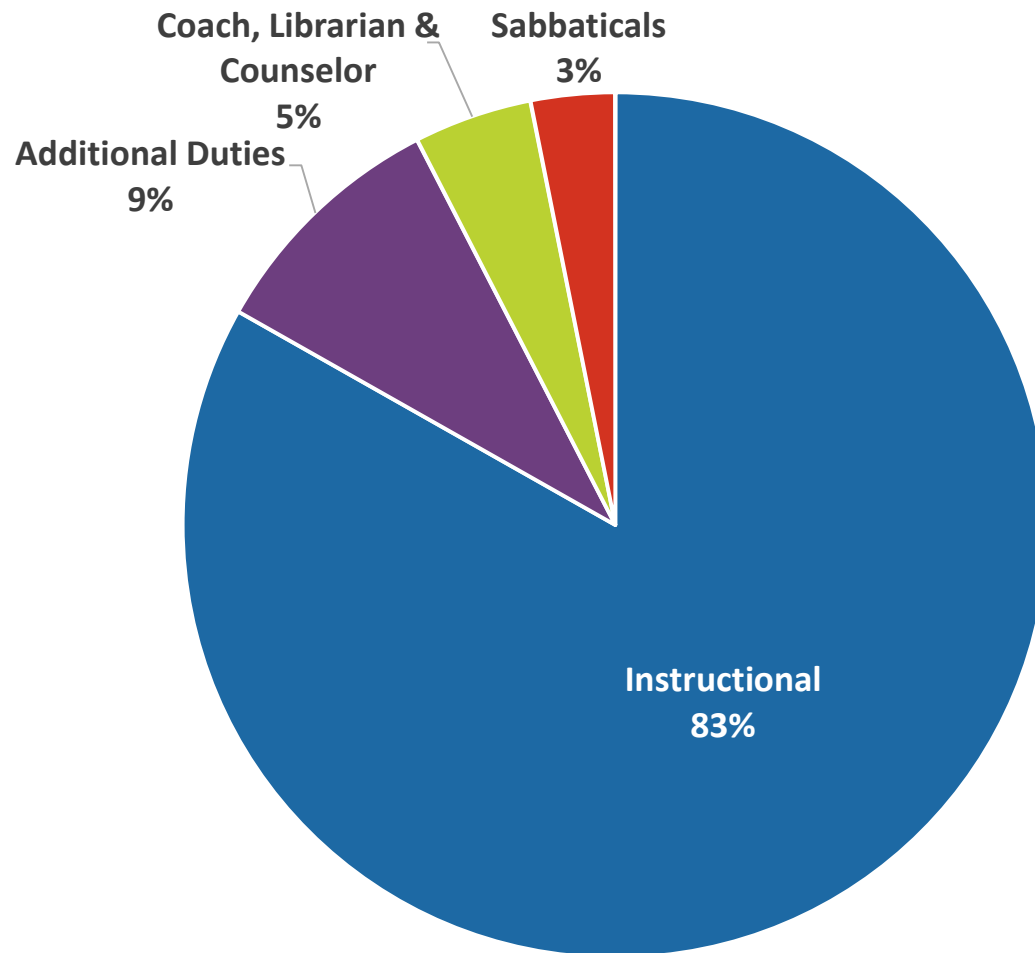


# Employee Compensation by Role

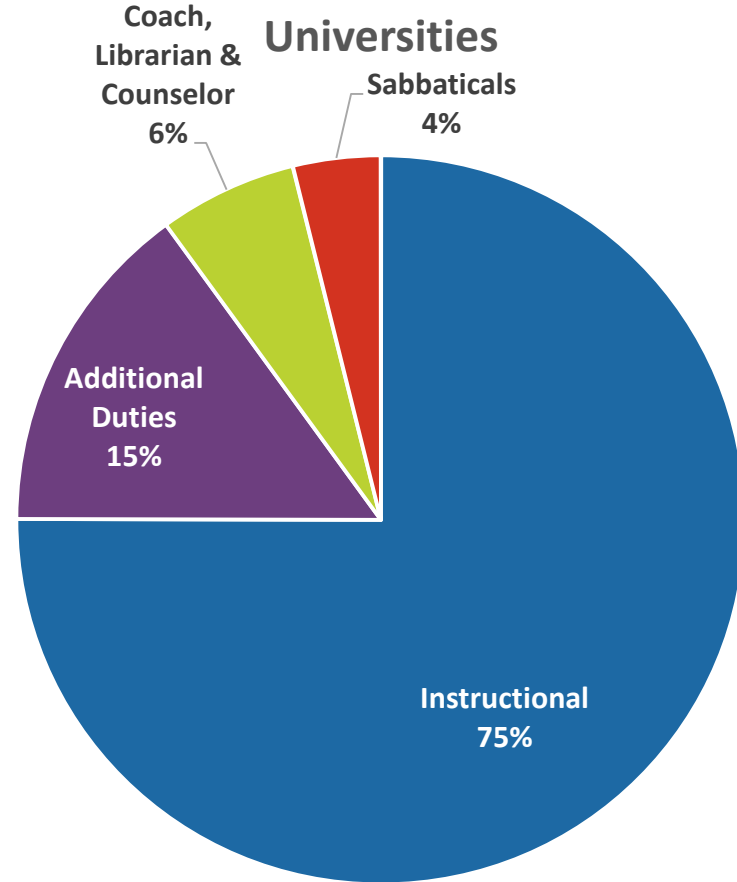
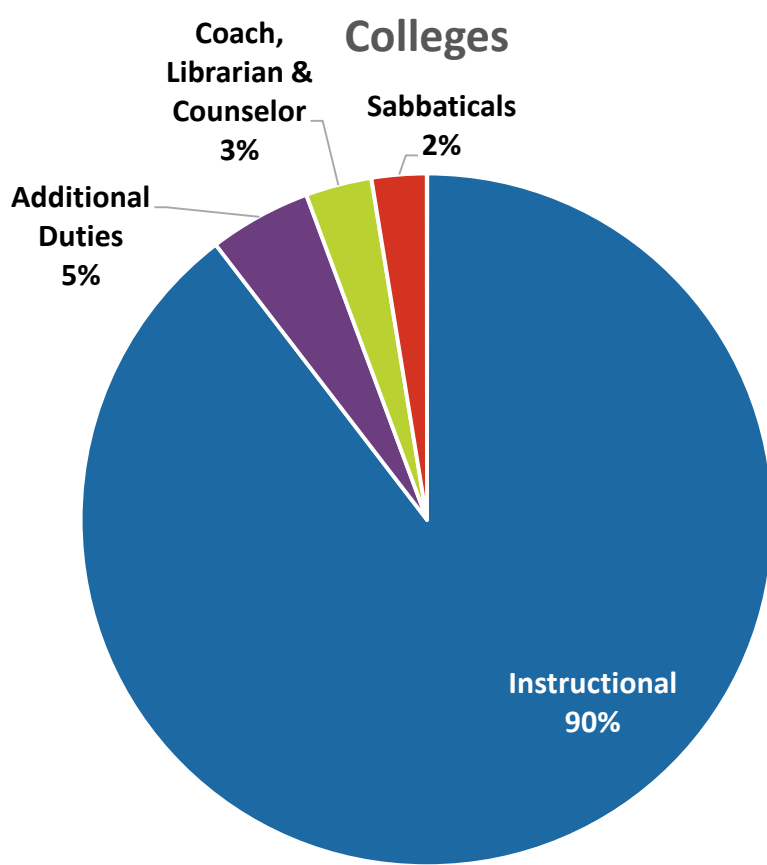


\$1.2 billion

# Faculty Compensation by Assignment

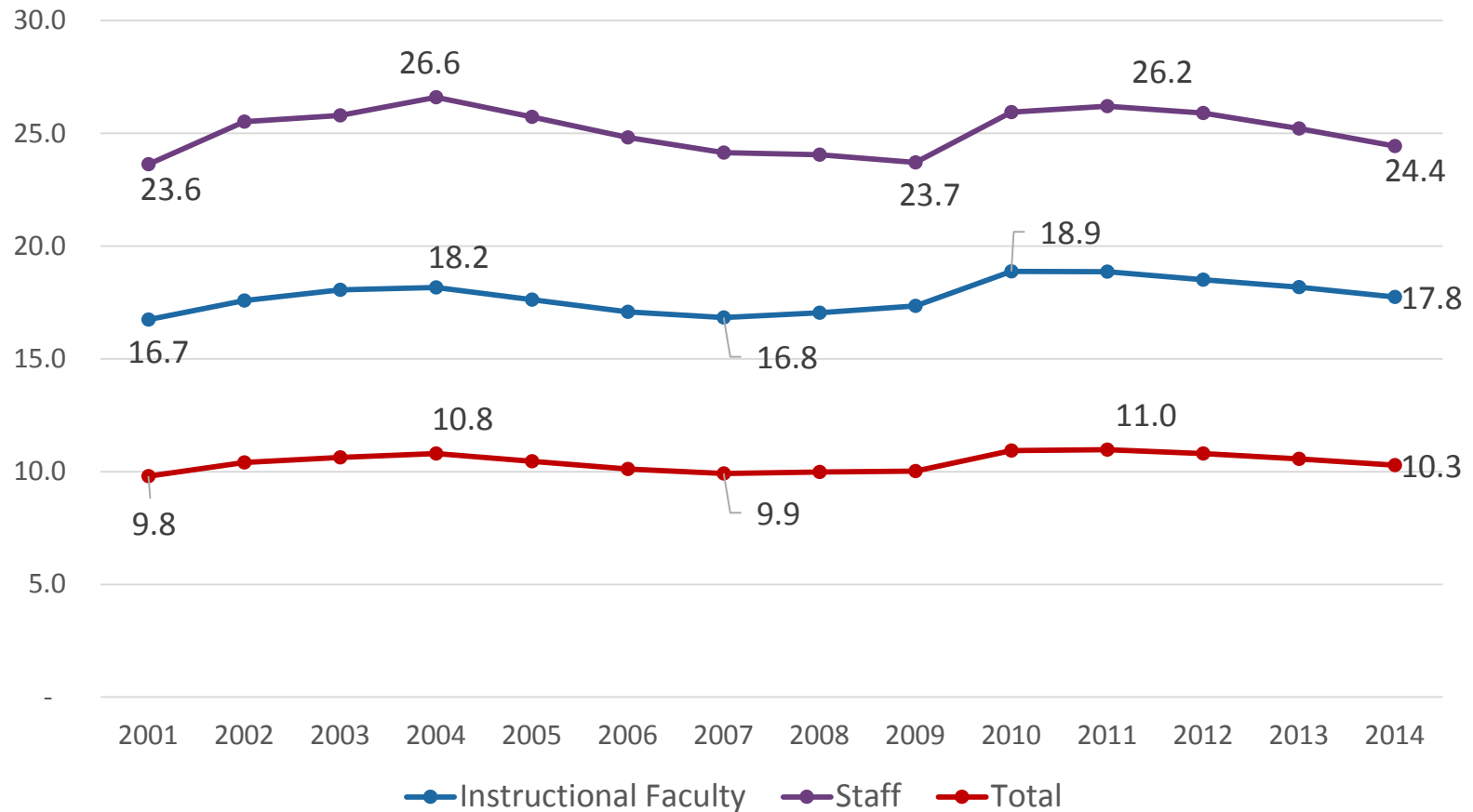


# Faculty Compensation by Assignment

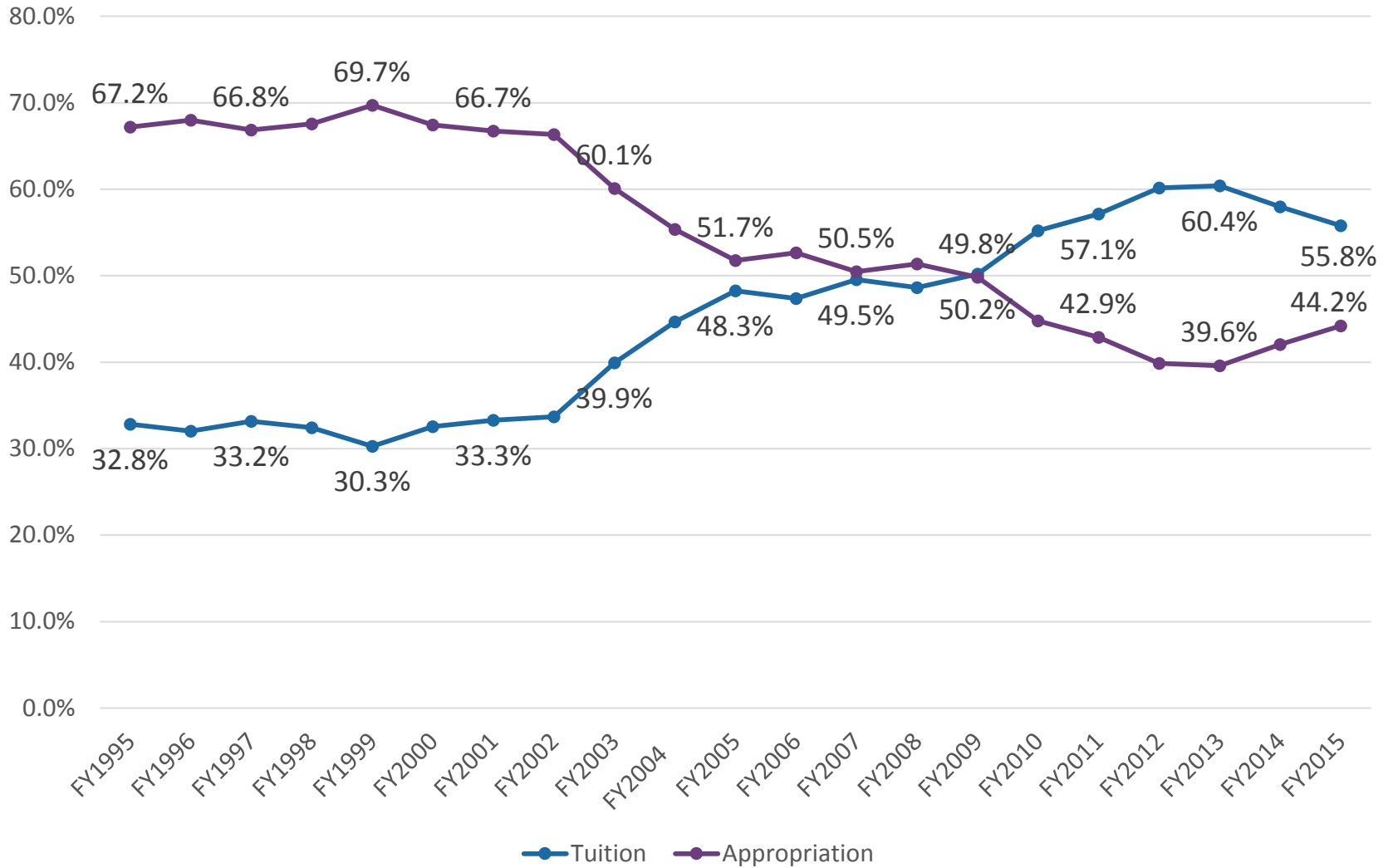




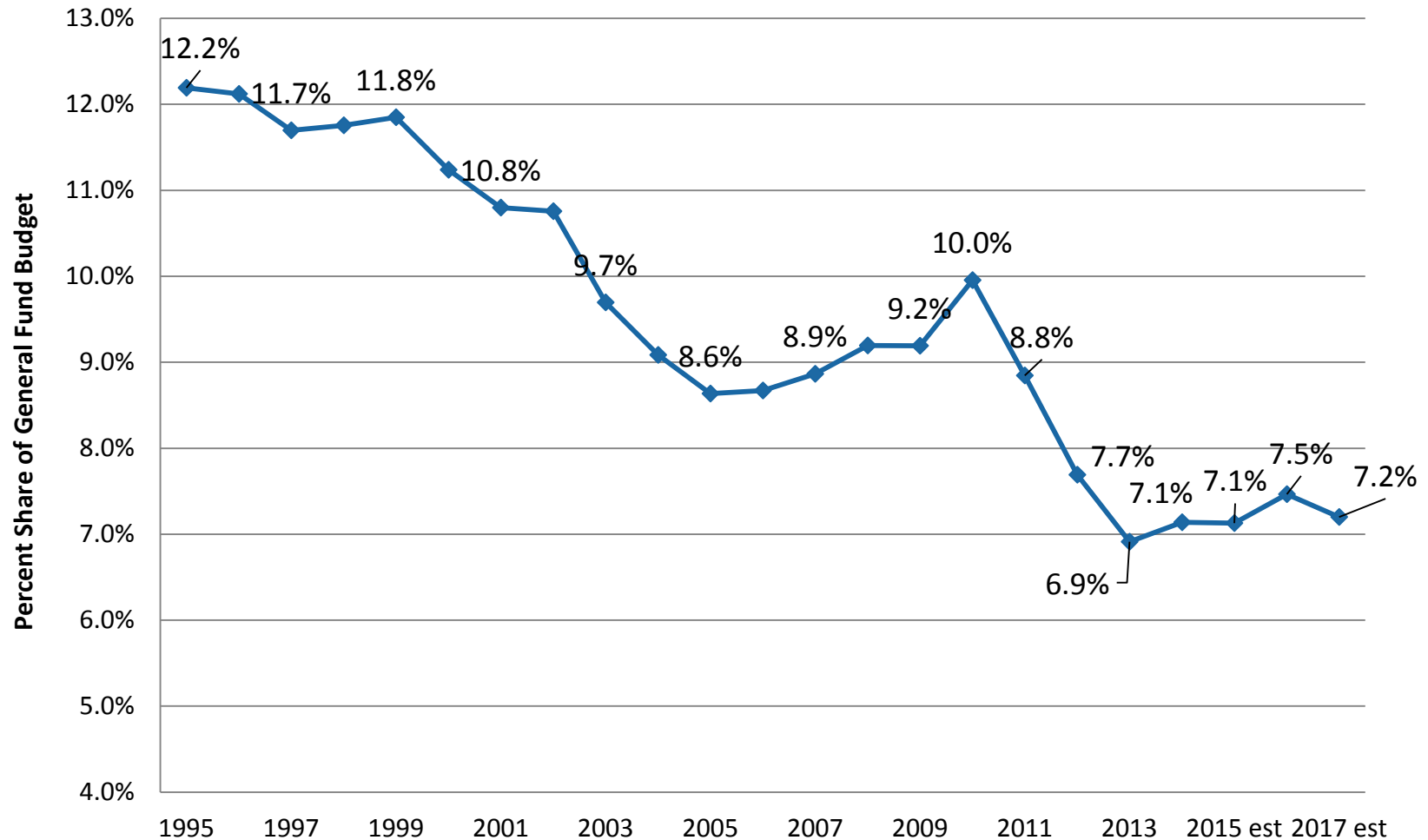
# Student FYE to Instructional Faculty & Staff FTE



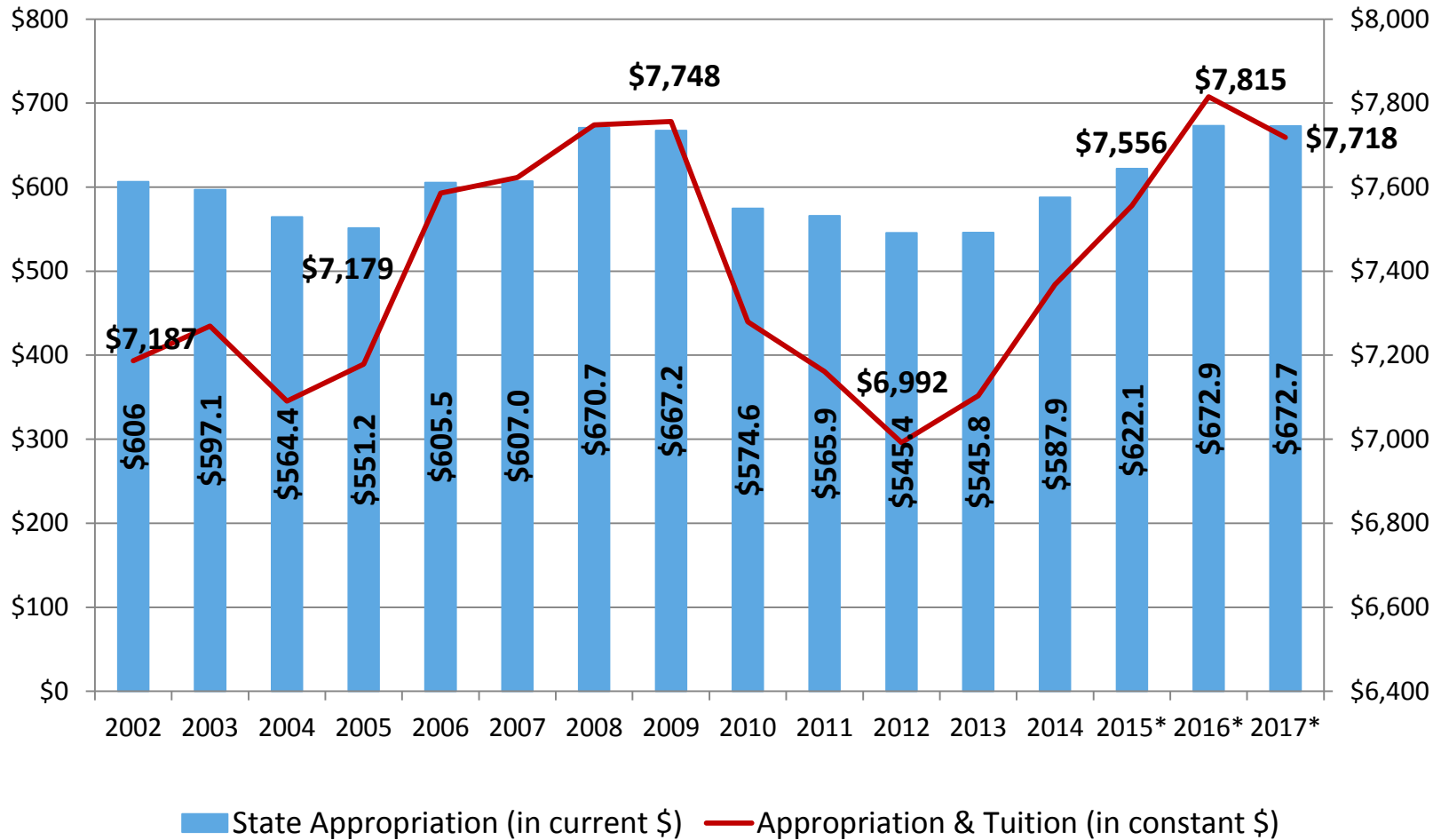
# Percent of State Appropriation and Tuition Revenue



# Higher Education Percent Share of State Budget FY1995-2017 (est.)



# State Appropriation Revenue (\$ in millions) & Appropriation & Tuition per FYE

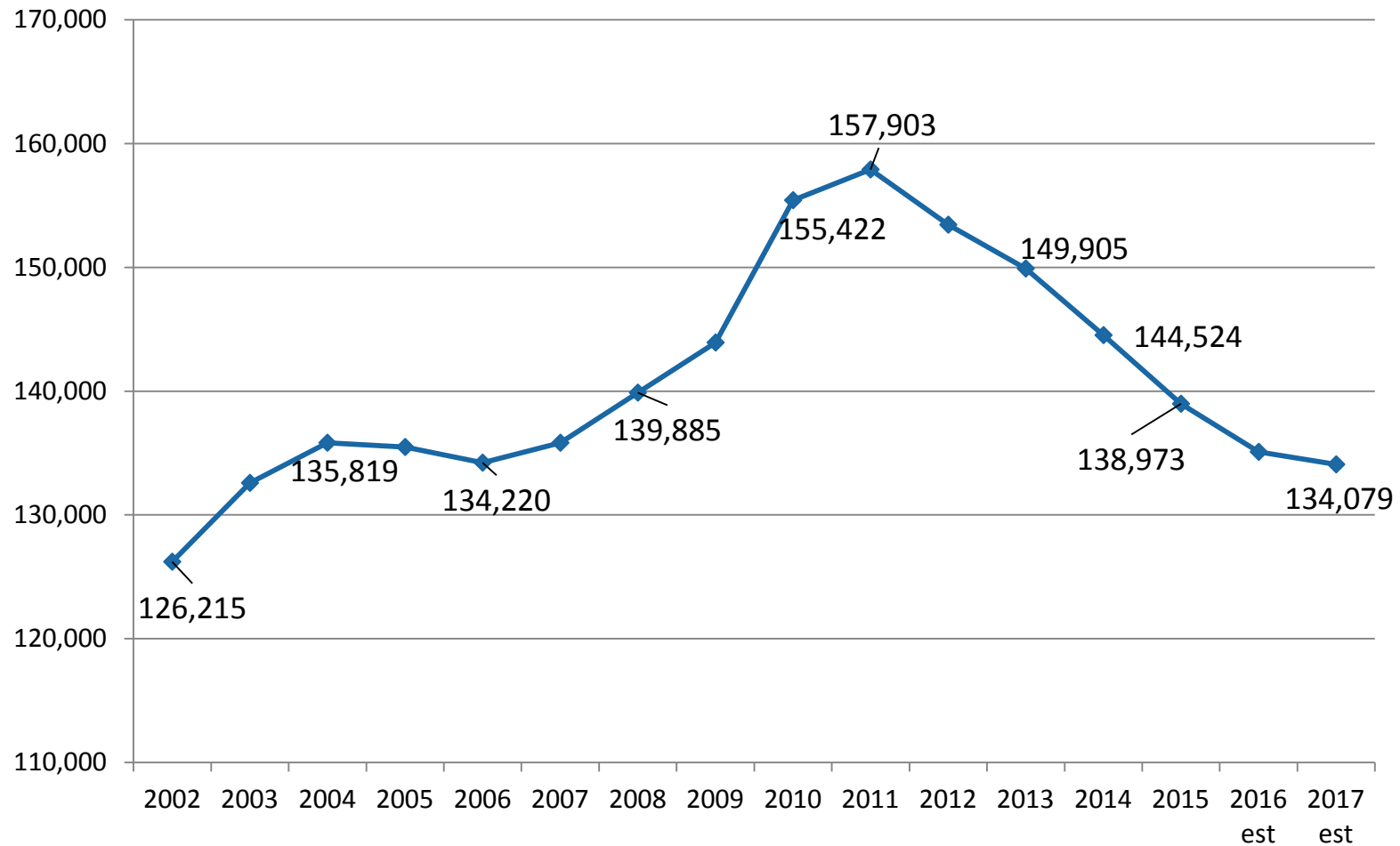


\*projected

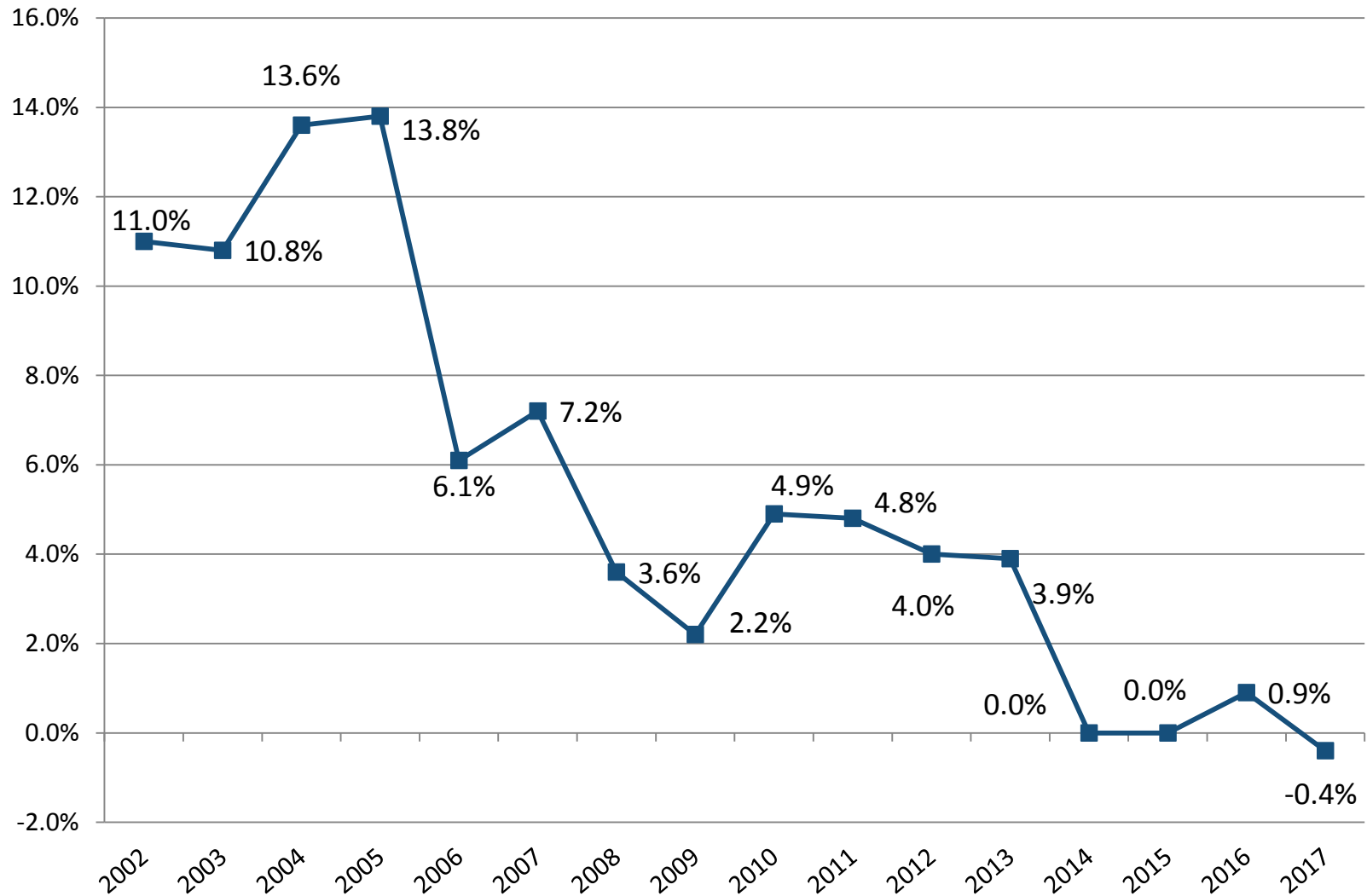
MnSCU FP&A Nov 2015



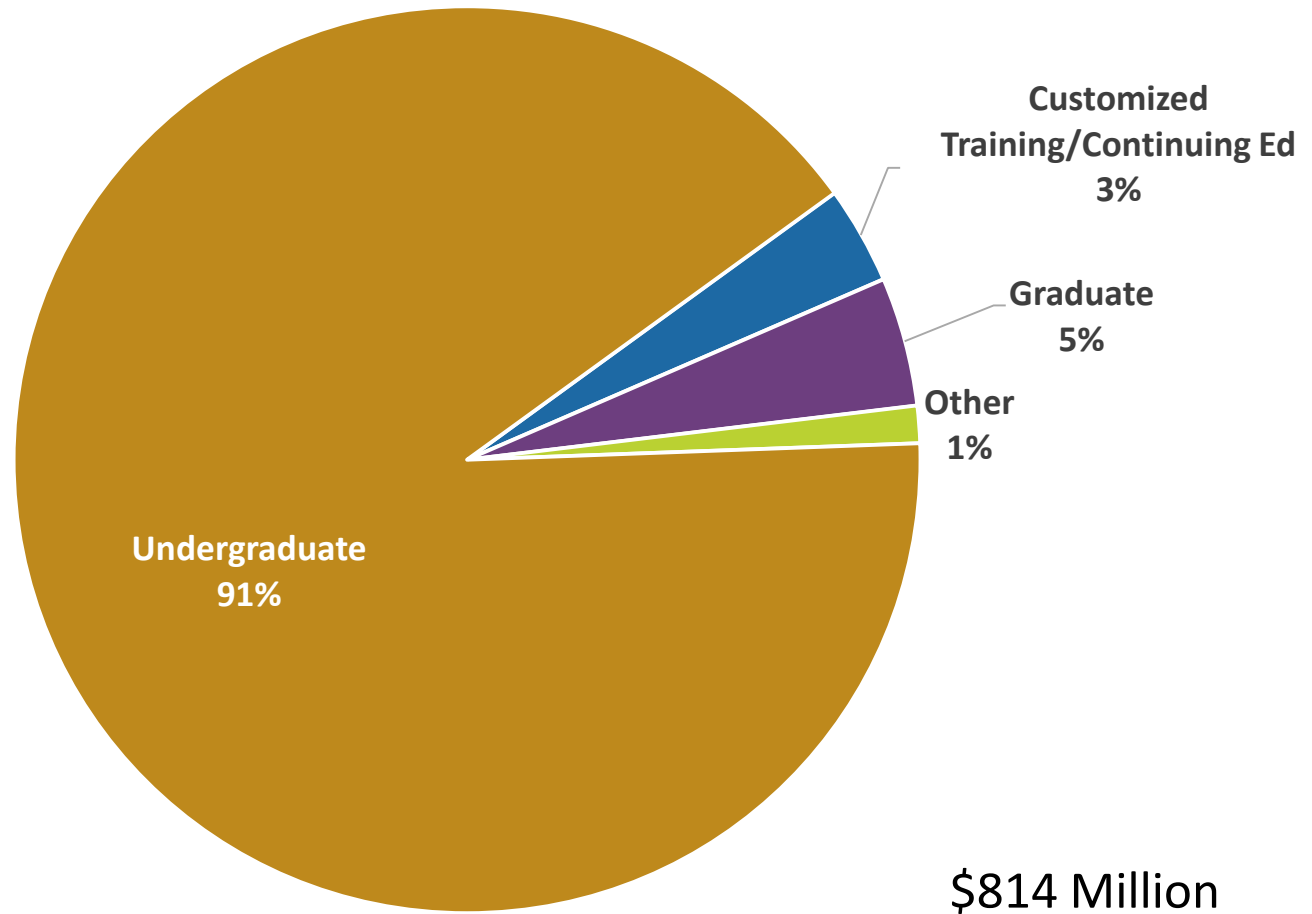
# Student FYE Enrollment



# Average Tuition Rate Increases



# Tuition Revenue Breakdown



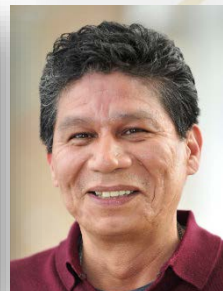
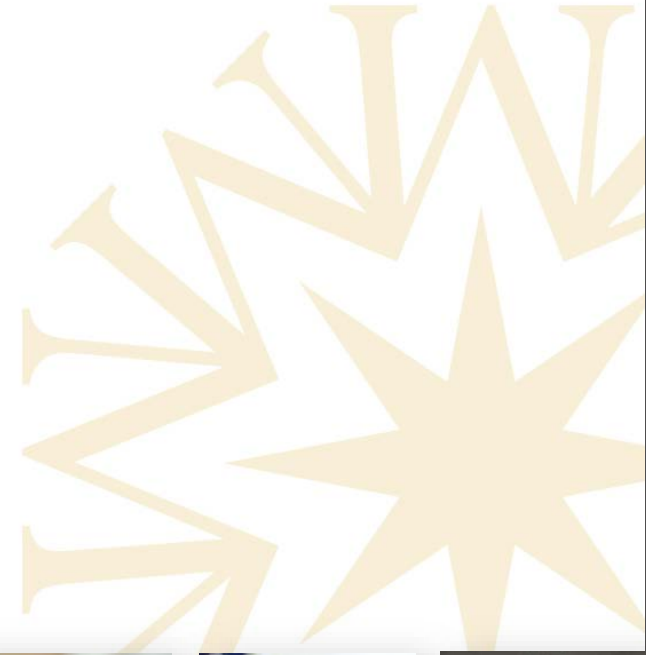


**Minnesota**  
STATE COLLEGES  
& UNIVERSITIES

30 7th St. E., Suite 350, St. Paul, MN 55101-7804

(651) 201-1800 | (800) 456-8519 | +1 (651) 556-0596

*Consumers with hearing or speech disabilities may contact us via their preferred Telecommunications Relay Service*



The Minnesota State Colleges and Universities system is an Equal Opportunity employer and educator.



**Minnesota**  
STATE COLLEGES  
& UNIVERSITIES



# State Appropriation Revenue (\$ in millions)

