



# Presidential Search Profile

St. Cloud State University



**MINNESOTA STATE**



**ST. CLOUD STATE**  
UNIVERSITY

A member of Minnesota State



# POSITION OVERVIEW



## Minnesota State Colleges and Universities invites applications and nominations for an engaging president of St. Cloud State University.

The next president of St. Cloud State University will lead us through our 150th anniversary, the launch of our University Foundation's Comprehensive Campaign, and the continuation of a brand marketing strategy. We pride ourselves on our partnerships and our close relationships with the city and with the Central Minnesota region St. Cloud State calls home. We are looking for a president who will engage with our partners to take these relationships one step further.

As an institution we focus on education that goes beyond the classroom, and this theory is emphasized in Our Husky Compact – a promise we make to our students that they will be prepared as global citizens of the 21st Century. We offer applied learning opportunities, so our students gain real-world experience in their field of study.

Our two colleges and four professional schools offer a combined 200 academic programs, 60 graduate degrees, and more than 30 education abroad choices on six continents. These programs emphasize hands-on learning through community engagement and close interaction with faculty. Coupled with support from our Career Center, our students have a clear path to a career.

Our campus sits on 100 acres between downtown St. Cloud and the Beaver Islands, a group of more than 30 islands that form a natural maze for a two-mile stretch of the Mississippi River. The St. Cloud metropolitan area is 24th on Forbes magazine's "Best Small Places for Businesses and Careers." St. Cloud State is ranked in Forbes magazine's "America's Top Colleges" and is in the top 1 percent of the most affordable colleges on the list. Our student athletes enjoy competing on our men's and women's Division I hockey program and on our 16 Northern Sun Intercollegiate Division II teams, including our two-time national champion Huskies Wrestling.

Serving more than 15,000 students, St. Cloud State is one of the largest public universities in Minnesota.

## Minnesota State Colleges and Universities

**Minnesota State is the largest single provider of higher education in the state. With 37 institutions, including 30 community and technical and seven state universities, Minnesota State serves 58 percent of the state's undergraduate student population.**

Students and employers alike count on Minnesota State to provide an extraordinary education. Our colleges and universities are accredited by the Higher Learning Commission, and many of the academic programs offered have received specialized accreditations. Our faculty, too, are credentialed, experienced, and dedicated.

### Extraordinary Facts

- We serve 375,000+ students annually and more students of color, first-generation college students, and students of modest financial means than anyone else in the state, including:
  - » 63,616 Students of Color and American Indian Students
  - » 48,500 First-Generation College Students
  - » 84,000 Low-Income Students
  - » 95,000 Students Aged 25 or Older
  - » 10,000 Veterans and Service members
- We offer the lowest tuition in Minnesota.
- Our colleges and universities have 54 campuses that are conveniently located in 47 communities throughout Minnesota.
- We provide more than 3,700 academic programs, including nearly 600 offered entirely online.
- We award more than 40,000 degrees, certificates, and diplomas annually.
- 85% of graduates are employed in a field related to their degree program.
- Our colleges and universities produce more graduates for jobs in critical, high-demand fields such as health care and information technology than anyone else in the state.
- We employ more than 16,000 dedicated faculty and staff focused on student success.
- We provide essential training and specialized certification options for business, industry, and professionals throughout Minnesota.

### Governance

Minnesota State's 15-member Board of Trustees is appointed by the Governor and has policy responsibility for system planning, academic programs, fiscal management, personnel, admissions requirements, tuition and fees, and rules and regulations.

[www.minnstate.edu/board/index.html](http://www.minnstate.edu/board/index.html)

### Chancellor

Under the direction of the Board of Trustees, the chancellor is chief executive officer of Minnesota State and is responsible for providing academic leadership to the system's 37 colleges and universities, ensuring effective and efficient management and operation of the system so that Minnesota State can meet the current and long-term educational needs of all Minnesotans.

[www.minnstate.edu/chancellor/index.html](http://www.minnstate.edu/chancellor/index.html)

### Strategic Framework

In January 2012, the Board of Trustees adopted a strategic framework for Minnesota State's future. The framework emphasizes the essential role the system plays in growing Minnesota's economy and opening doors of educational opportunity to all Minnesotans. Minnesota State recently completed a multiyear self-examination and is now moving to operationalize the strategies in the Strategic Framework:

- To ensure access to an extraordinary education for all Minnesotans
- To be the partner of choice to meet Minnesota's workforce and community needs
- To deliver to students, employers, communities and taxpayers the best value and most affordable higher education option





# BACKGROUND AND BASICS



## History

St. Cloud State University has a rich history of serving the people of Minnesota. The university began in 1869 as the Third State Normal School, created for the sole purpose of educating primary school teachers to teach in Minnesota’s schools. Since our founding, we have changed our mission as the needs of the state and region evolved, from offering a junior college curriculum in 1898, to a Teacher’s College in 1921, to a university in 1975. We began operating our Twin Cities location in 2007, the same year we began offering applied doctorate degrees. We will be celebrating our 150th anniversary, our Sesquicentennial Celebration, in 2019.

## Student Life

Student Life and Development at St. Cloud State University is committed to providing positive, enriched environments so students can succeed inside and outside of the classroom. By becoming fully engaged in both academic studies and campus life, our students develop an understanding of themselves, their beliefs and passions, and how they can make a difference in the world.

Student life offers on-campus living in seven residential communities as well as targeted and campus-wide student services. With more than 200 student organizations in the Department of Campus Involvement, students find ways to get involved and experience leadership in organizations that allow them to explore their passions, deepen academic understanding, and connect with their culture or religion.

We also offer NCAA Division I Men’s and Women’s Hockey and 16 Division II sports in the Northern Sun Intercollegiate Conference. Our award winning student media give students outlets to explore communications in print (University Chronicle), radio (KVSC), and TV (UTVS).

## Student Services

St. Cloud State University is dedicated to student success. To do this, we offer a variety of student services that help students throughout their academic journey. We are participating in the American Association of State Colleges and Universities (AASCU) “Reimagining the First Year of College” initiative and began use of the Educational Advisory Board’s Student Success Collaborative during Fall 2017 to support student retention and support our case management advising approach.

Academic resources include such services as Academic Collegiate Excellence (a conditional admit program that prepares students to succeed in college), the Academic Learning Center, University College, Intensive English Center, and several tutoring programs. Other services support students’ health, mental, emotional, and other needs. These services include:

- American Indian Center
- Career Center
- Counseling and Psychological Services
- Husky Tech
- LGBT Resource Center
- Multicultural Student Services
- University Library
- Lindgren Child Care Center
- Office for Non-traditional Students
- Public Safety
- Student Disability Services
- Student Health Services
- Student Parent Support Initiative
- U-Choose
- Veterans Resource Center
- Women’s Center



## Accreditations

We are accredited by the Higher Learning Commission and our accreditation was reaffirmed in 2017. The next HLC campus visit is expected in 2020-21 and the next reaffirmation of accreditation is expected in 2026-27.

## Enrollment Trends

St. Cloud State University has experienced enrollment declines in both headcount and full-year equivalent over the last few years, reflecting a shift in high school demographics in Minnesota as well as increased competition within Minnesota and the surrounding region. In Fall 2017, St. Cloud State University served 14,615 total students (12,788 undergraduate and 1,827 graduate). Within our enrollment, St. Cloud State University has seen continuous increases in the enrollment of students of color and international students. In Fall 2017, we hosted 1,466 international students and 18.3% of our students are student of color.

This year, faculty and staff are engaged in developing our Strategic Enrollment Plan, with a focus on doubling our degrees and credentials and increasing our enrollment through: a comprehensive rebranding strategy that will launch in January 2018; improving retention and completion through expanded and data-informed student support, advising, and engagement strategies; and through an approach to strategic academic program portfolio management that revitalizes and grows our portfolio of programs to better meet the changing student, state, and workforce needs of Minnesota and the region.

## Expanded Facilities

The campus expanded our ability to engage business and community partners through the opening of our Integrated Science and Engineering Laboratory Facility (ISELF) in 2013. In Spring 2017, we opened an expanded Twin Cities location to offer high demand graduate and undergraduate programs.

In Spring 2017, we will begin a \$18.6 million renovation of Eastman Hall (built in 1929) as an integrated facility for student health services and health science academic programs. The renovated former gymnasium will house student health programs, including Counseling and Psychological Services, U-Choose and Recovery Community Programs, and applied clinical spaces for students in our School of Health and Human Services. Like ISELF, Eastman also will create opportunities for engagement with the St. Cloud community and provide access to the Mississippi River.



## Enrollment Demographics

Headcount.....	15,092
Full-year equivalent .....	11,837
Students of color .....	16%
First Generation.....(Federal Def)	14%
Average age .....	22
Female.....	53%
Male .....	46%
Unknown.....	1%

## Employee Demographics

Female.....	712
Male .....	650
Total .....	1,362





# STRATEGIC PLANNING



## St. Cloud State University's Strategic Plan: Building a 21st Century Engaged University

St. Cloud State University's Strategic Plan articulates what it means to be a 21st Century Engaged University and create a framework for achieving our goals. To successfully educate and graduate tomorrow's diverse and non-traditional student populations, we are creating an innovative educational environment that is responsive to their needs and expectations. With Our Husky Compact, we will help students discover and achieve their goals, preparing them for the professional, social, and cultural environments they will contribute to and someday lead.

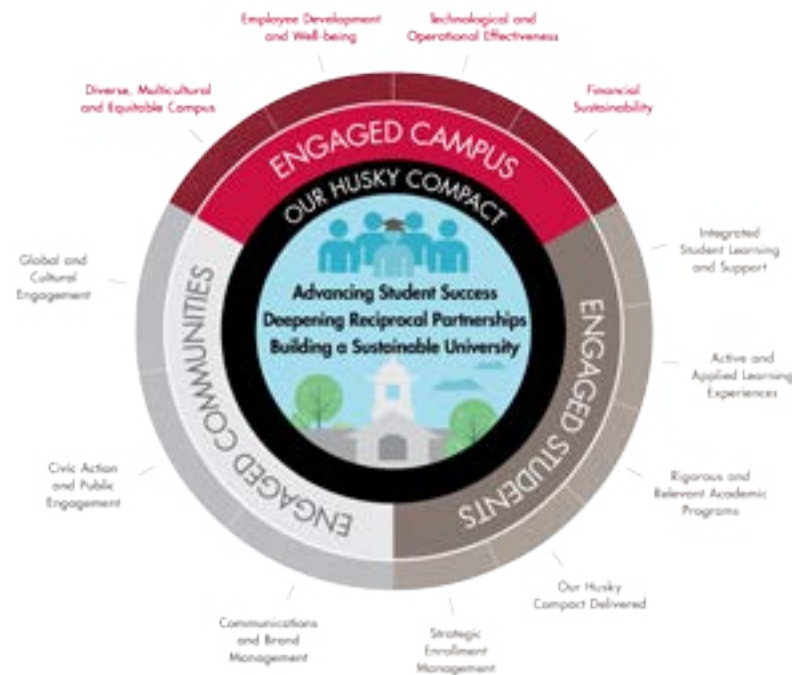
To achieve these outcomes we must be what we teach. We must be outward-looking, partnership-oriented, and deeply engaged with our students and our communities. We must cultivate mutual respect and understanding, build reciprocal relationships within and beyond campus walls, and adapt proactively to the radically shifting and evolving landscapes in our shared worlds.

For St. Cloud State University, engagement rests on the following three strategic goals.

**Engaged Students:** Engaged student learning requires taking an active approach to delivering our educational programs and services that continually encourages our students to practice what they learn, integrating new knowledge and skills across a range of experiences, and empowers our students to grow and achieve their potential, positioning them for life-long success.

**Engaged Campus:** Creating an engaged campus requires creating an environment that is organizationally and financially healthy, supporting the success and wellbeing of all members of our campus community. It is a commitment to become an innovative learning organization in which we learn from and support each other.

**Engaged Communities:** Engaged communities involve building sustained, rich partnerships that are relevant and responsive to community needs. By extending our learning environment through a global network of strategic partners and institutions, we provide our students with international learning experiences and bring the world into the classrooms at St. Cloud State University.



## Mission

We prepare our students for life, work and citizenship in the 21st century.

## Vision

Through active discovery, applied knowledge and creative interaction, we positively transform our students and the communities where they live and work.

## Our Vision Defined

St. Cloud State University makes a positive, long-term impact on the lives of our students. We provide rigorous and relevant academic experiences with engaged, active learning opportunities in an intellectually vibrant, inclusive and diverse campus community. Our graduates are well-prepared to act as responsible global citizens and professionals who remain actively connected with our university.

## Our Husky Compact

Our Husky Compact is the essential and cross-cutting attributes of a St. Cloud State University education. When students graduate with a St. Cloud State education, they will:

- Think Creatively and Critically
- Seek and Apply Knowledge
- Communicate Effectively
- Integrate Existing and Evolving Technologies
- Engage as a Member of a Diverse and Multicultural World
- Act with Personal Integrity and Civic Responsibility

Our Husky Compact is a commitment we make to our students and students make to their education that will set them apart and prepare them to be global citizens of the 21st century.





# PARTNERSHIPS



**Community and industry priorities serve as sites for experiential learning and engagement and will continue to guide and inform our program revitalization and new program development efforts. Each college and school maintains strong ties with key community and industry partners.**

**The College of Liberal Arts and the School of the Arts** has active partnerships that support student success and community engagement. Two key partnerships are:

- **Central Minnesota Arts Board:** This organization allows the School of the Arts to intersect with it across all disciplines. From funding grants to supporting specific artistic endeavors, the board is a critical ally with the School.
- **The St. Cloud Area School District ISD 742** plays a critical role in the development and training of teacher candidates in the College and School. The district supports our student teachers in a range of disciplines, including art, communication arts and literature, music, world languages, and teaching English to speakers of other languages.

**The School of Health and Human Services** provides the opportunity to enhance St. Cloud State's already existing strength in the fields of nursing, gerontology, community psychology, clinical mental health, kinesiology, medical technology, and social work. At the same time, it creates space for collaboration to develop new interdisciplinary programs to support the needs of our community partners and workforce demands in the evolving health and human services environment.

Our programs have well-established relationships with community partners and agencies. Each semester more than 400 students are working in internship and field placements as part of their degree programs. Some of the community partners that are providing experiential learning for our students include:

- CentraCare Health
- Fairview Health Services
- Allina Health System
- Catholic Charities
- Boys and Girls Club of Central Minnesota
- St. Cloud School District 742
- Lutheran Social Services
- St. Benedicts Senior Community
- United Way of Central MN
- Mayo Clinic Health System



**The Herberger Business School (HBS)** is committed to developing enduring relationships with business leaders in the community. The HBS Advisory Board is one example of such a relationship that provides long-lasting benefits to our students, the faculty, the school, the university, and industry. Through their dedication, involvement, participation, and interaction, the members of the HBS Advisory Board play a vital role in ensuring the ongoing success, growth, and vitality of the school by supporting our mission in the areas of education, research, and service.

The St. Cloud State Microloan Program was created to be a partner within the community of St. Cloud and the Herberger Business School. The program unites the strength of the university and its students with the passion and determination of local entrepreneurs to contribute to the economic vitality of the local community and serves as a catalyst of student professional growth and development.

# PARTNERSHIPS



The goal of the Microloan Program is to build the local economy by providing technical/entrepreneurial expertise, educational assets, and small loans for individuals that ordinarily would not qualify for traditional financing. Partnering with the U.S. Small Business Administration and Minnesota Department of Employment and Economic Development, the Central Minnesota Small Business Development Center, in conjunction with the Herberger Business School, provides learning opportunities for students while enhancing the economic competitiveness of the region by offering professional expertise and guidance for regional small businesses. Services include counseling, training, and loan packaging. Under the supervision of the SBDC Director, students work directly with clients to solve business challenges.



**The School of Public Affairs** partners on many projects with the Greater St. Cloud Development Corporation (GSDC). The St. Cloud Area Quarterly Business Report is one joint product, now in its 17th year, to provide economic information and a short-run forecast to area business leaders. This is published by the St. Cloud Times and circulates to nearly 40,000 readers. Internships have been placed for undergraduate students in the Planning and Community Development program and are being expanded to graduate students in the M.S. in Applied Economics and the Master's in Public Administration. We have also provided GSDC with studies of immigration and workforce management as well as surveys of key businesses.

Other key partners include:

- United Way of Central Minnesota
- The Central Minnesota Council on Aging
- The Central Minnesota Council on Nonprofits

**The School of Education's IGNITE Center** serves St. Cloud State students, graduates, and the P-16 professional teaching community of Central Minnesota. This center has an ongoing partnership between the research on best practices at St. Cloud State and on those implementing best practices in the classroom setting. The IGNITE Center will provide the structure for P-16 faculty, staff, and administration to work together to do provide support for new teachers, professional development for educators, and collaborative research.

**The College of Science and Engineering's (COSE)** emphasis on preparing students for successful careers is supported by integrating disciplinary knowledge with a deep understanding of the discovery process. One of COSE's key partners is GeoComm, a national leader in developing systems and GIS solutions to support 911 service. GeoComm reached out to St. Cloud State in order to help in the design, development, and deployment of the new generation of 911 support service that is based on 3-D visualization. The partnership allowed St. Cloud State students to participate in developing a leading edge technology and St. Cloud State to ultimately be the first campus in the United States to enhance the safety and security for students, faculty, and staff using the new technology.

**University Library**, housed in the Miller Center, serves all disciplines of St. Cloud State University and a wide range of users, including students, faculty, staff, and community members in Central Minnesota.

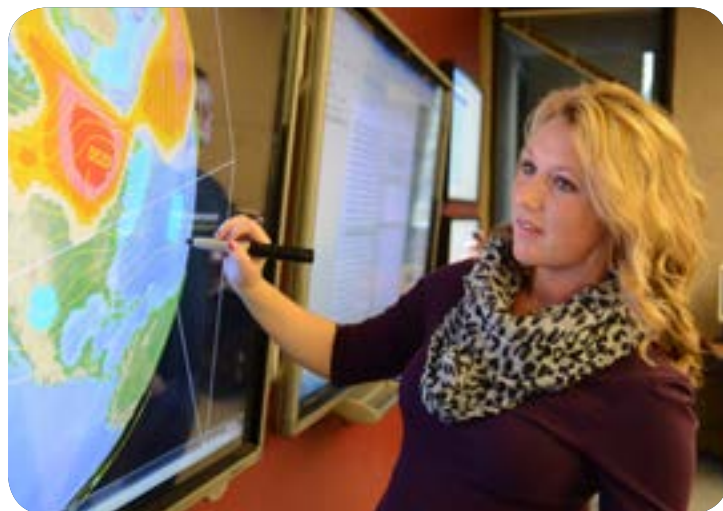


# PARTNERSHIPS



**The Center for Continuing Studies** provides non-credit programs and corporate and workforce training and development opportunities for St. Cloud and the greater Central Minnesota region. Many of its programs are funded through the Minnesota Job Skills Program. Some of its key partners include:

- Minnesota Municipal Clerks and Finance Officers of Minnesota (MCFOA)
- Minneapolis Division of the Federal Bureau of Investigation (FBI)
- Grede (Foundry)
- Netgain
- Bernick's
- Auto Parts Headquarters
- Electrolux
- Park Industries
- Crest Healthcare Supply
- Woodcraft Industries
- Alliant Techsystems Inc.
- TruStone Financial
- ING Direct



**International partners:** International educational opportunities have been a strategic priority for St. Cloud State University for decades. Our historical commitment is raised to a new level by our Husky Compact and our desire that our students will be engaged as members of a diverse and multicultural world through exposure to learning experiences and environments that move them to become more globally and culturally competent. Each college and school is developing a rich array of international experiences for our students that embed internationalization across our curriculum.

St. Cloud State will continue to develop a set of strategic international partners to provide education abroad opportunities for our domestic students and create pathways for international students to experience a St. Cloud State education that build upon established international programs, including:

- Our semester-long study abroad program housed at Alwick Castle in northern England. For decades our students have spent a semester living and studying in the castle — immersed in British history and culture.
- Our 20-year partnership with Nelson Mandela Metropolitan University in Port Elizabeth, South Africa, has led to hundreds of students studying abroad in semester and short-term programs.
- Our 15-year partnership with Universidad de Concepción in Chile has won recognition with the 2013 Senator Paul Simon Award for Comprehensive Internationalization from the NAFSA Association of International Educators and the 2013 Heiskell Award for “Best Practices in International Partnerships.”

In addition, at the Intensive English Center (IEC), students study academic English with international students from all over the world. They also learn more about different cultures as they prepare for their future university classes.

The IEC offers six levels of academic English language instruction. Students receive between 21 and 23 hours of English language instruction a week. More than 80 percent of the IEC students successfully move on to university degree programs.

**Two-year institutions:** Nearly 45 percent of St. Cloud State graduates come to our university as transfer students. Our transfer partners are critical to our student recruitment efforts and will become increasingly important to our program delivery strategies as we expand degree program offerings off-site at our two-year partner campuses. Our top seven transfer institutions are from within the Minnesota State system, and we see expansion of these partnerships as central to our program delivery strategy.

In July St. Cloud State signed an expanded partnership agreement with St. Cloud Technical and Community College to work toward dual admissions and enrollment, development of clearly-articulated Transfer Pathways, and development of 2+2 degrees.

**Community and Higher Education partnerships:** Strong partnerships with the city of St. Cloud and city agencies have strengthened both the city and our university.

- **St. Cloud Police Department:** The Campus Area Police Services improves safety in the campus area with three veteran police officers assigned to prevent crime on or near campus. A contribution from the university supports this partnership, which is housed in a newly-constructed facility near the south end of campus.
- **United Way:** Our work with the United Way has led to the establishment of Dr. Potter's Bigs on Campus Mentoring Initiative on campus, which connects campus employees with mentees from the community. The initiative was named after the late President Earl H. Potter III.

We also value our partnerships within higher education. We are a member of many academic and professional associations, including the American Association of State Colleges and Universities (AASCU), American Association of Colleges for Teacher Education, and the Council of Graduate Schools in the United States. We have joined in AASCU initiatives, including:

- **The Re-Imagining the First Year of College initiative:** Through this initiative we are working with institutions throughout the country to develop comprehensive institutional transformation that creates sustainable change for student success. The initiative focuses on improving success rates for low-income students, first-generation students, and students of color.
- **Opportunities for All:** We are helping spread the message about the importance of state colleges and universities in making higher education available to anyone who is willing to work hard and be successful.



## Grants

In 2016, 134 faculty-sponsored student research, 139 faculty and staff were awarded extramural funding while 33 faculty received internal funding. We collaborated with more than 50 business/industry and regional partners and more than 10 state agencies. Our colleges and schools were awarded a total of \$6.9 million in external grants and contracts for these projects.

**College Success Grant from the Great Lakes Higher Education Guaranty Corporation:** This \$205,510 grant assists students from traditionally underserved backgrounds.

**Scholarship for Service Award** for student scholarships to train future cybersecurity professionals: This \$2.78 million award from the National Science Foundation and Department of Homeland Security certifies that St. Cloud State is a member of the CyberCorps Scholarship for Service Community, which works to educate and train students to be future cybersecurity professionals.

**Rehabilitation Long-Term Training grant:** The Rehabilitation Counseling and Rehabilitation Counseling and Addictions programs award scholarships to students in the programs thanks to two \$1 million grants from the Rehabilitation Services Administration's Office of Special Education and Rehabilitation Services of the U.S. Department of Education. The grants go through 2019 and 2020 respectively.

**National Science Foundation Scholarships in STEM grant:** This five-year \$5-million grant will fund scholarships and student support services to more than 100 students as well as fund research into how to best provide support to low-income students studying STEM. The grant funds scholarships at St. Cloud State University and at four Minnesota State colleges that, together with St. Cloud State, form the Academic Collaboration and Coordination Model to Ensure Student Success in STEM (ACCESS STEM).



# ACADEMIC PROGRAMS



**Our mission is to prepare students for the challenges of the 21st Century workforce. Our more than 200 undergraduate programs and 60 graduate programs are designed to provide students with one-on-one instruction and the tools they need to succeed in today's fast-paced, global society.**

At St. Cloud State, education goes beyond the classroom. Our focus on applied learning means our students get the opportunity to gain real-world experience in their field of study. By focusing on providing hands-on learning and interaction, we put our students in a position where they can turn academic experiences into marketable skills.

## Degrees offered:

- Associate of Arts
- Associate of Science
- Bachelor of Arts
- Bachelor of Elective Studies
- Bachelor of Fine Arts
- Bachelor of Music
- Bachelor of Science
- Bachelor of Science in Engineering Certificate
- Doctor of Education
- Executive Masters in Engineering Management
- Graduate Certificate
- Master of Arts
- Master of Business Administration
- Master of Engineering Management
- Master of Public Administration
- Master of Science
- Master of Science Electrical Engineering
- Master of Social Work
- Professional Science Master's Specialist

## Academic Majors and Programs

- Associate Degree Programs
- Individualized Studies (AS)
- Liberal Arts and Science (AA)

## Bachelor Programs

- Art (BFA)
- Accounting (BS)
- Anthropology (BA)
- Art (BA)
- Art Education (BS)
- Art History (BA)
- Athletic Training (BS)
- Biochemistry (BS)
- Biochemistry and Molecular Biology (BS)
- Biology (BES)
- Biomedical Sciences (BS)
- Biotechnology (BS)
- Business Economics (BA)
- Chemical Dependency (BS)
- Chemistry - ACS Approved (BS)
- Chemistry Education Grades 9-12 (BS)
- Chemistry/General Science Education Grades 5-12 (BS)
- Communication Arts and Literature (BS)
- Communication Sciences and Disorders (BES)
- Communication Sciences and Disorders (BS)
- Communication Studies (BA)
- Communication Studies Interdepartmental (BS)
- Communication Studies Supplementary (BA)
- Community Health (BS)
- Community Psychology (BS)
- Community Psychology (BES)
- Computer Engineering (BS)
- Computer Science (BS)
- Criminal Justice Studies (BA)
- Early Childhood Education (BS)
- Earth Sciences (BA)



# ACADEMIC PROGRAMS



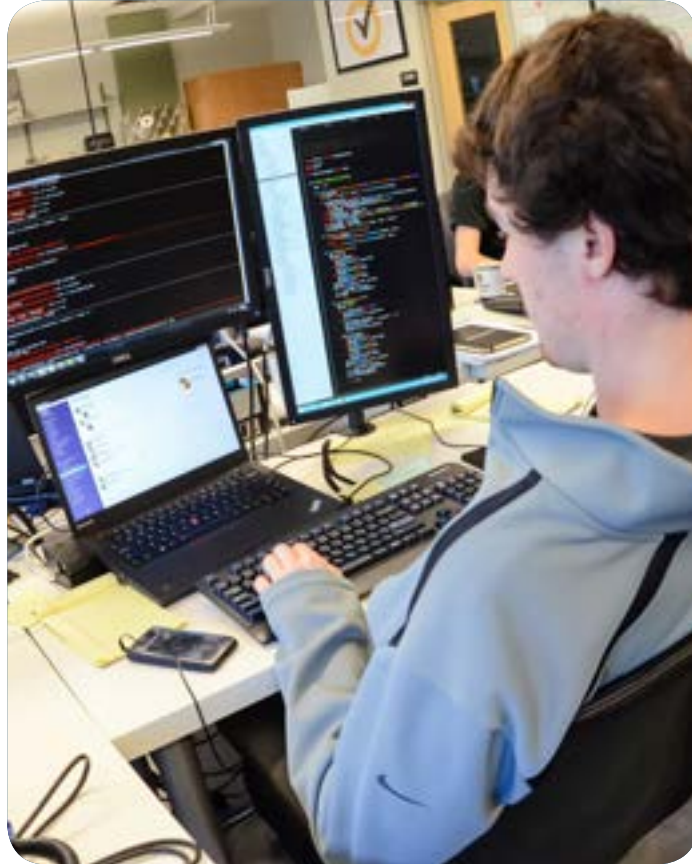
- Earth and Space Science Education Grades 9-12 (BS)
- Earth and Space Science/General Science Education Grades 5-12 (BS)
- Ecology and Field Biology (BS)
- Economics (BA)
- Electrical Engineering (BS)
- Elementary/K-6 Education (BS)
- English (BES)
- English (BA)
- Entrepreneurship (BS)
- Environmental Science (BS)
- Environmental Studies (BS)
- Environmental Studies (BES)
- Film Studies (BA)
- Finance (BS)
- General Business (BS)
- Geography (BES)
- Geography (BA)
- Global Studies (BA)
- Graphic Design (BFA)
- Health and Physical Education (BS)
- History (BA)
- Hydrology (BS)
- Information Systems (BS)
- Information Technology Security (BS)
- International Business (BS)
- International Relations (BA)
- Land Surveying/ Mapping Science (BES)
- Land Surveying/Mapping Science (BS)
- Latin American Studies (BA)
- Liberal Studies (BES)
- Life Science Education Grades 9-12 (BS)
- Life Science/General Science Education Grades 5-12 (BS)
- Management (BS)
- Manufacturing Engineering (BS)
- Manufacturing Engineering Technology (BS)
- Marketing (BS)
- Mass Communications (BS)
- Mathematical Economics (BS)
- Mathematics (BA)
- Mathematics Teaching (BS)
- Mechanical Engineering (BS)
- Medical Laboratory Science (BS)
- Meteorology (BS)
- Music (BA)
- Music (BES)
- Music (BMUS)
- Music Teaching (BS)



- Nuclear Medicine Technology (BS)
- Nursing (BS)
- Philosophy (BES)
- Philosophy (BA)
- Physical Education (BS)
- Physical Education - Non-teaching (BES)
- Physics (BS)
- Physics (BES)
- Physics Education Grades 9-12 (BS)
- Physics/General Science Education Grades 5-12 (BS)
- Planning and Community Development (BA)
- Political Science (BA)
- Psychology (BA)
- Radiologic Technology (BS)
- Real Estate (BS)
- Recreation and Sports Management (BS)
- SPED: Academic and Behavioral Strategist (BS)
- Social Studies Education (BS)
- Social Work (BS)
- Sociology (BA)
- Sociology - Interdepartmental (BA)
- Software Engineering (BSE)
- Spanish (BS)
- Spanish (BA)
- Spanish (BES)
- Statistics (BS)
- Studio Art (BFA)
- Technology Education (BS)
- Technology Management (BS)
- Technology Studies (BES)
- Theatre (BA)
- Travel and Tourism (BA)
- Women's Studies (BA)



# ACADEMIC PROGRAMS



## Pre-Professional Programs

Pre-Chiropractic  
Pre-Dentistry  
Pre-Law  
Pre-Medicine  
Pre-Mortuary Science  
Pre-Occupational Therapy  
Pre-Optometry  
Pre-Pharmacy  
Pre-Physical Therapy  
Pre-Physician Assistant  
Pre-Veterinary Medicine

## Graduate Certificate Programs

Academic & Behavioral Strategist  
Addictions Specialist  
Applied Clinical Research  
Autism Spectrum Disorders  
Autism  
Community Education  
Cultural Resources Management

Data Analytics  
Design for E-Learning  
Developmental Disabilities  
Early Childhood Special Education  
Emotional/Behavioral Disorders  
Gerontology  
Geographic Information Science  
Instructional Technology  
Learning Disabilities  
Library Media Specialist  
Marriage and Family Therapy  
Medical Device Regulation  
Medical Technology Quality  
Parent Education  
Planning and Community Development  
Reading Teacher K-12  
Regulatory Affairs and Services  
STEM Education  
School Counseling  
Sixth Year Program: Educational Administration and Leadership  
Teacher Leader  
Teaching Calculus  
Teaching English to Speakers of Other Languages  
Technology Integration  
Traffic Safety Education  
Writing Center Administration

## Masters Programs

Applied Behavior Analysis (MS)  
Applied Clinical Research (MS)  
Applied Economics (MS)  
Applied Statistics (MS)  
Biological Sciences (MS, MA)  
Business Administration (MBA)  
Child and Family Studies: Early Childhood Special Education (MS)  
Child and Family Studies: Family Studies (MS)  
Clinical Mental Health Counseling (MS)  
College Counseling and Student Development (MS)  
Communication Sciences and Disorders (MS)  
Computer Science (MS)  
Counseling Psychology: Rehabilitation Counseling (MS)  
Counseling Psychology: Rehabilitation and Addiction Counseling (MS)  
Counseling Psychology: School Counseling (MS)  
Criminal Justice Studies (MS)  
Cultural Resources Management Archaeology (MS)  
Curriculum and Instruction (MS)



Educational Administration and Leadership (MS)  
Electrical Engineering (MSEE)  
English (MA)  
English Education (MS)  
English Studies (MA)  
Executive Engineering Management (EMEM)  
Geography (MS)  
Gerontology (MS)  
History (MA)  
History (MS)  
Industrial-Organizational Psychology (MS)  
Information Assurance (MS)  
Information Media (MS)  
Marriage and Family Therapy (MS)  
Mass Communications (MS)  
Master of Engineering Management (MEM)  
Material Science and Instrumentation (PSM)  
Medical Technology Quality (MS)  
Public Administration (MPA)  
Public Safety Executive Leadership (MS)  
Regulatory Affairs and Services (MS)  
Rhetoric and Writing (MA)  
Social Responsibility (MS)  
Social Work (MSW)  
Teaching English as a Second Language (MA)  
Special Education (MS)  
Special Studies (MS, MA)  
Sports Management (MS)  
Technology Education (MS)

## Specialist Programs

Educational Administration and Leadership

## Doctoral Programs

Higher Education Administration (EDD)  
Educational Administration and Leadership (EDD)





# SEARCH DETAILS



## Presidential Search Qualifications and Characteristics

The successful candidate will demonstrate most, if not all, of these qualifications:



- » Strong vision and leadership skills necessary to guide and inspire St. Cloud State University and its diverse community of scholars, professionals, learners, and partners to implement their strategic vision to “Build the 21st Century Engaged University”
- » A commitment to student success and experience with developing innovative strategies to aggressively improve recruitment, retention, graduation, and post-graduation success
- » Experience creating sustainable financial business models in the changing higher education environment
- » Demonstrated commitment to and experience with diversity and inclusion
- » Demonstrated commitment to the concept of “Stewardship of Place” and experience leveraging the unique roles and responsibilities of state colleges and universities in regional engagement and development
- » Experience building strong and reciprocal relationships and strategic partnerships with business and industry, educational organizations (K-12 and post-secondary), and community organizations to assist in shaping the economic/social environment of the region
- » A demonstrated commitment to comprehensive internationalization and its integration with recruitment, student learning, and partnership development objectives
- » Demonstrated ability to create an environment that supports innovation, creative thinking, and risk taking to build institutional strategies and business models that will advance the ongoing success of St. Cloud State University
- » Experience, interest, and commitment to engaging St. Cloud State University’s donor community as the University embarks on its comprehensive fundraising campaign
- » A philosophy of servant leadership that will motivate and uplift the campus community to pursue opportunities and tackle challenges as they emerge
- » Demonstrated ability to collaborate with other colleges, universities, and the system office to support the mission and vision of the university and Minnesota State
- » Progressively responsible experience in higher education administration or in other complex mission-driven organizations
- » Experience within a union environment
- » Exceptional communication skills that are consultative and provide for feedback from a broad range of audiences (students, faculty and staff, alumni, community leaders, and friends of the university)
- » An earned doctorate or terminal degree

## Confidential Inquiries and Nominations

**Garry W. Owens, Ph.D., Executive Search Consultant, AGB Search, is supporting Minnesota State Colleges and Universities and St. Cloud State University in this search.**

Screening of applications will begin immediately and continue until the position is filled.

Nominations should include the name, position, address, and telephone number of the nominee.

Prospective candidates are encouraged to start a conversation about this opportunity through an initial email contact with either Dr. Owens or Dr. Mason prior to submitting materials.

Applicants should submit a cover letter, resume, and contact information for three professional references.

**Confidential inquiries and nominations should be directed to:**

**Garry W. Owens, Ph.D.**  
Executive Search Consultant  
AGB Search  
garry.owens@agbsearch.com  
806.239.3049

**Sally Mason, Ph.D.**  
Executive Search Consultant  
AGB Search  
sally.mason@agbsearch.com  
765.414.0299

To learn more about Minnesota State Colleges and Universities, please visit [MinnState.edu](http://MinnState.edu).

To learn more about St. Cloud State University, please visit [stcloudstate.edu](http://stcloudstate.edu).







# MINNESOTA STATE

Extraordinary Education.  
Exceptional Value.

30 East 7th Street, Suite 350  
St. Paul, MN 55101

651-201-1800  
888-667-2848

**[MinnState.edu](https://www.mnstate.edu)**