




Student Success



Board of Trustees Academic and Student Affairs Committee
June 17, 2014

Minnesota State Colleges and Universities

The Minnesota State Colleges and Universities system is an Equal Opportunity employer and educator.



Outline of presentation

- Student success measures
- Trends in student success
- Student success strategies
 - Metropolitan State University
 - Hennepin Technical College
- Questions and discussion



Student success measures defined

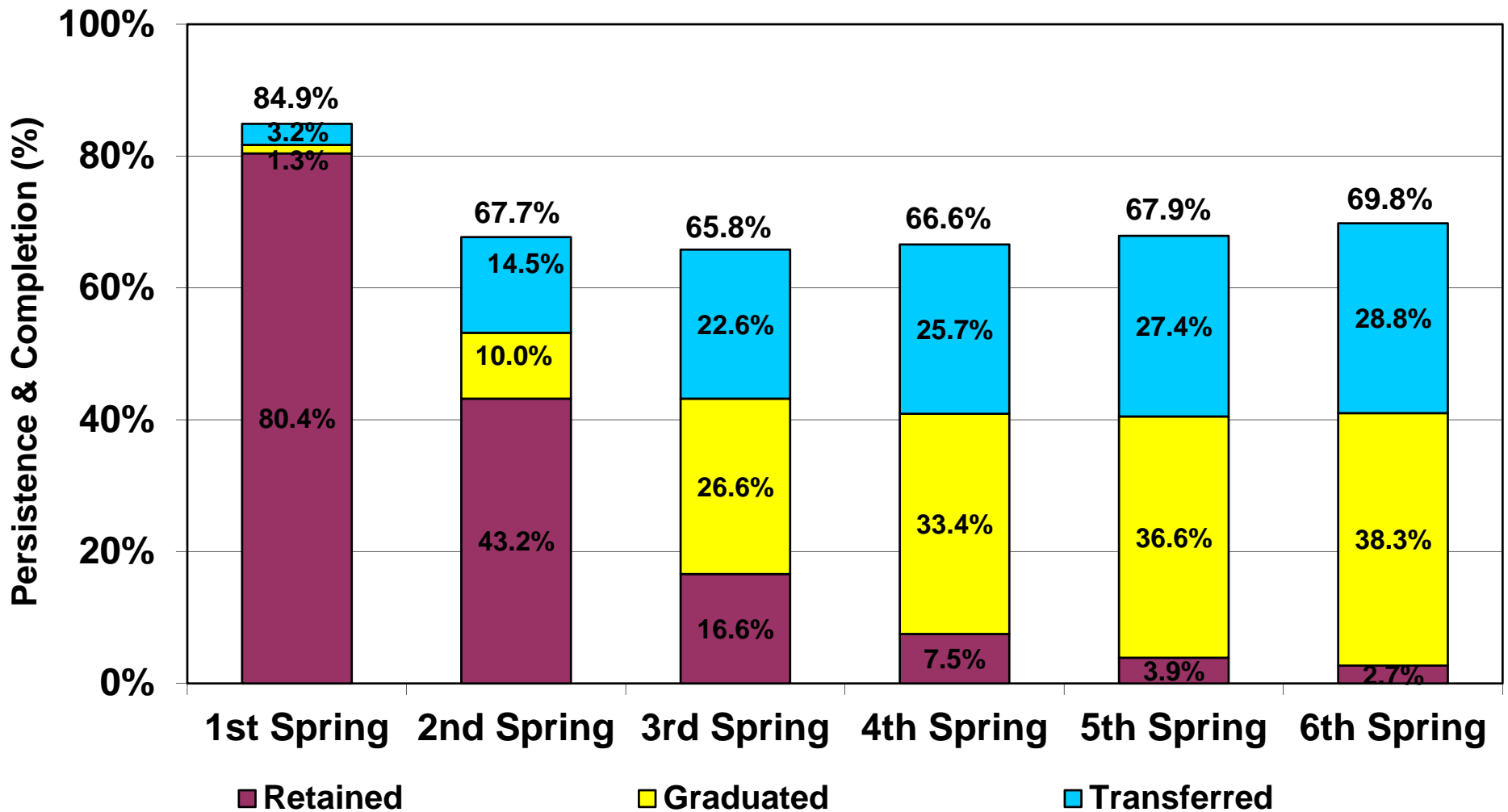
- Persistence & Completion Rate: Percent of fall entering students who have been retained, graduated, or transferred by the second fall term following original fall enrollment
- Completion Rate: Percent of fall entering students who have graduated or transferred within three years at the colleges or have graduated within six years at the universities

Student success measures defined

- Related Employment of Graduates: Percent of graduates in a fiscal year who reported they were employed during the year after graduation in a job that was related to their program or major.
- Certificates and Degrees: Number of certificates and degrees awarded in a fiscal year



College persistence & completion rate decreases and then remains stable or increases

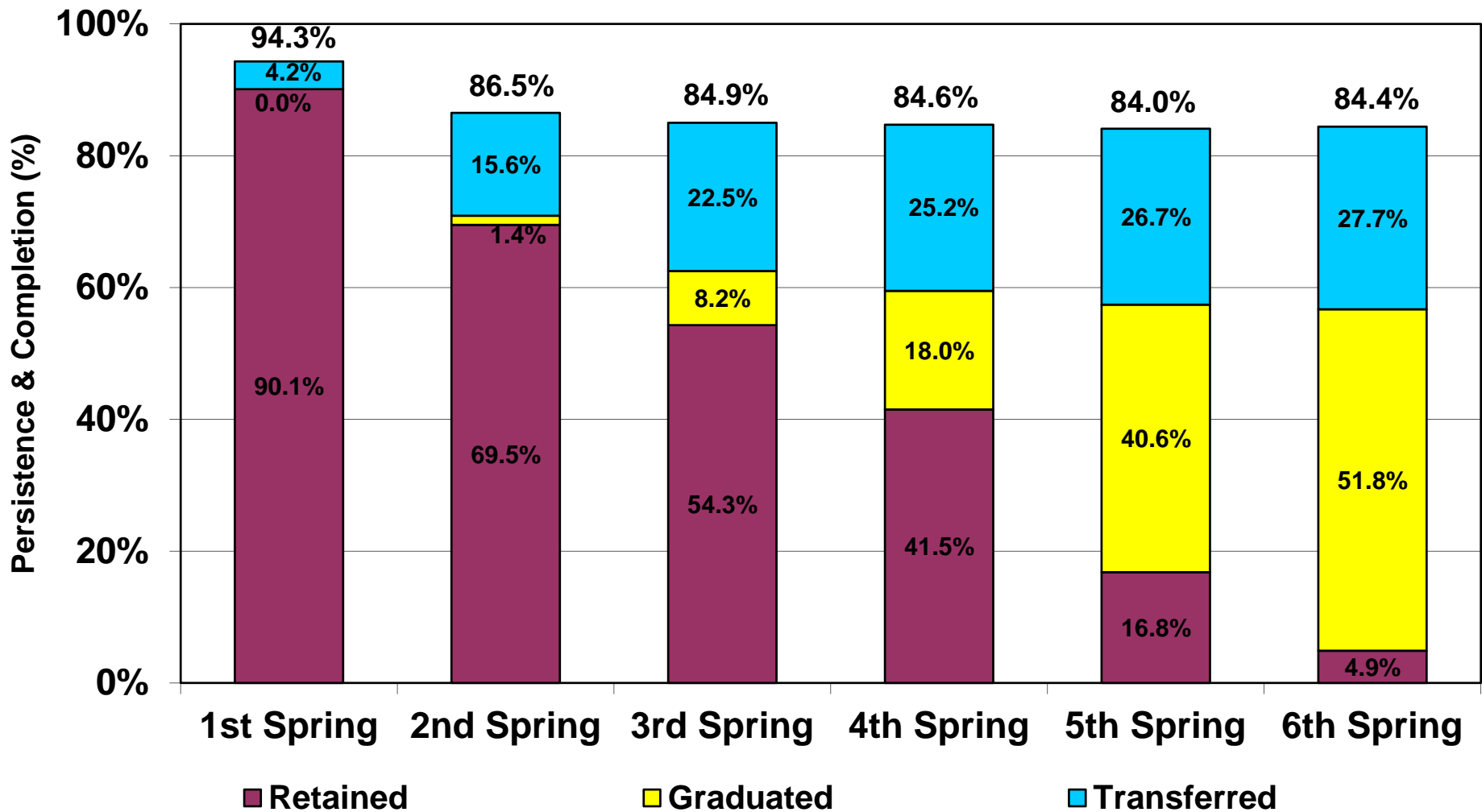


Fall 2007 entering full-time degree seeking undergraduate students = 24,744

Source: System Office Research – Academic and Student Affairs



University persistence & completion rates decrease in the first year and then remain stable

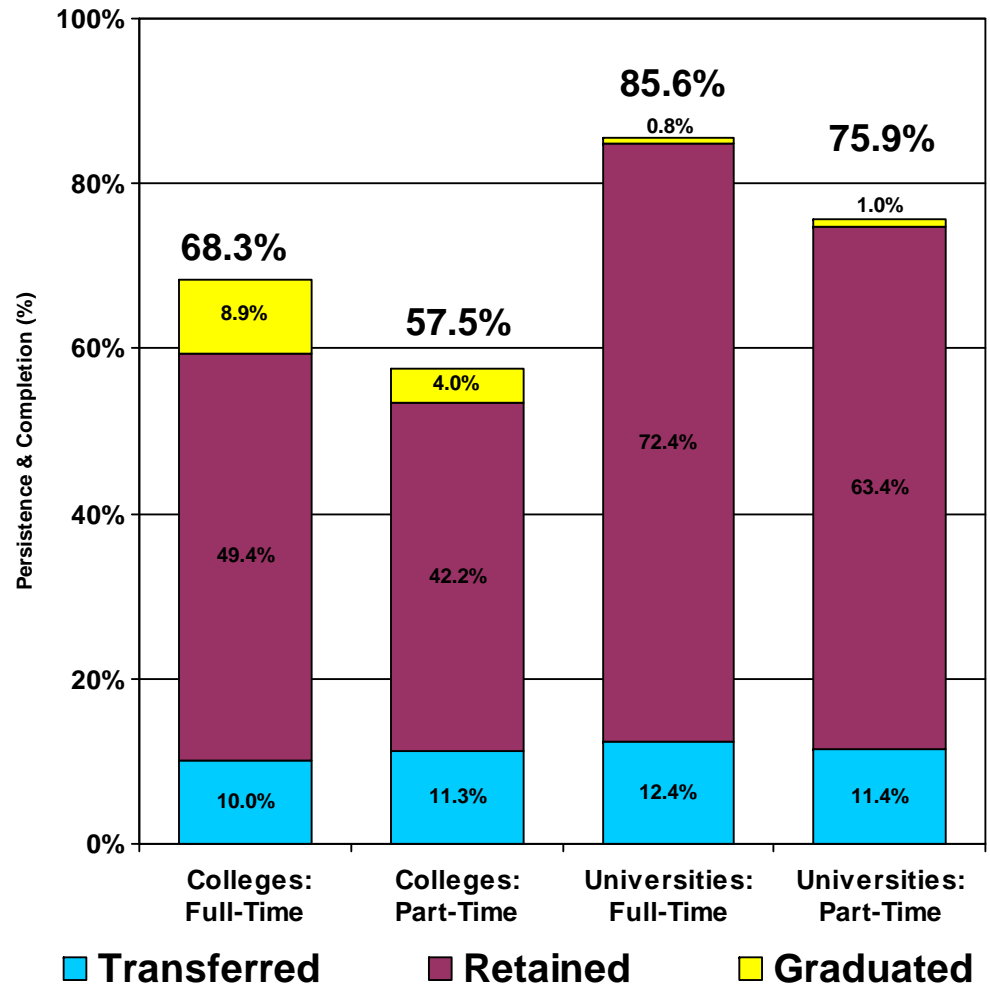


Fall 2007 entering full-time degree seeking undergraduate students = 12,996

Source: System Office Research – Academic and Student Affairs



Second fall persistence & completion rates are higher for full-time students

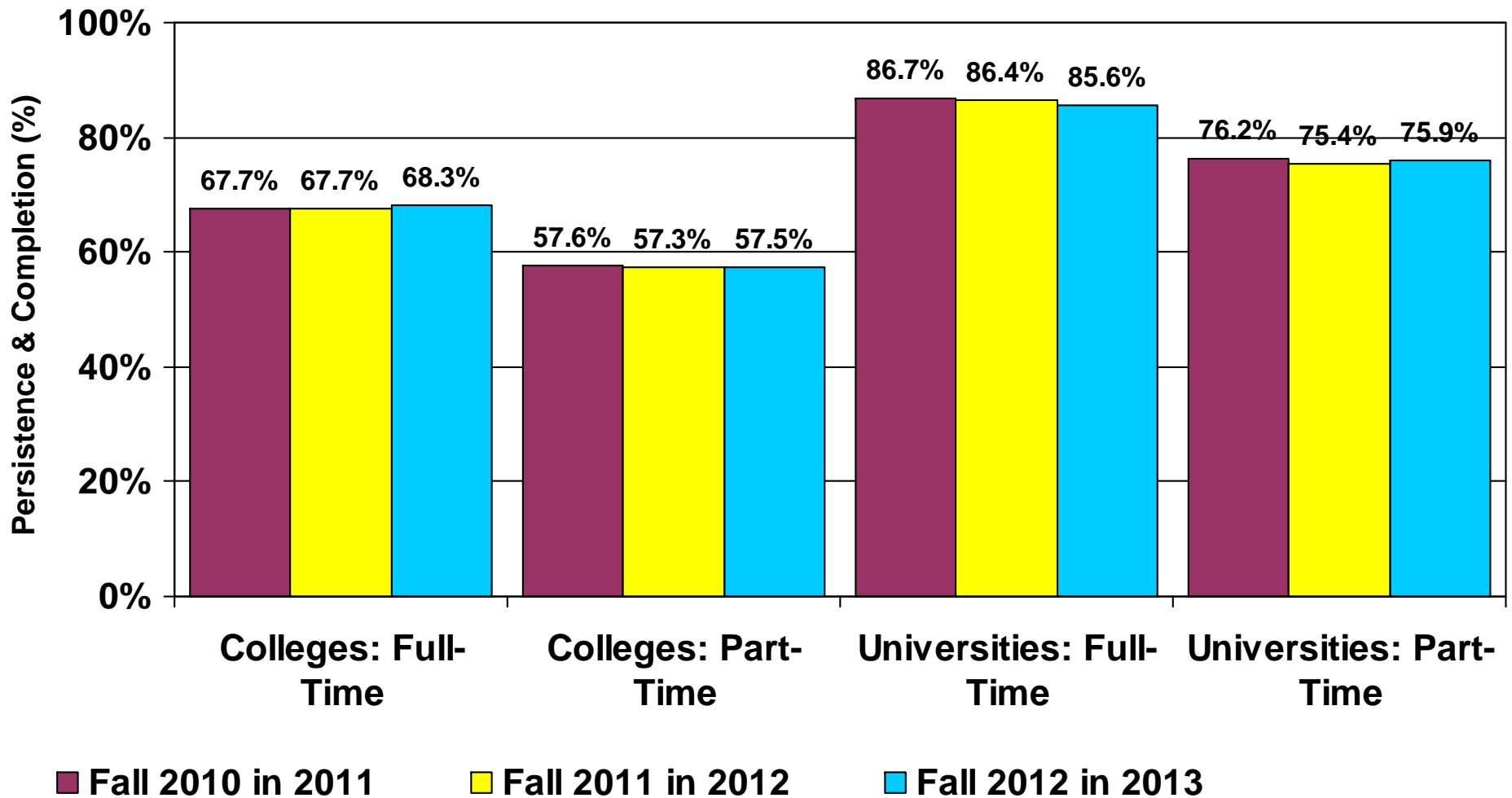


Fall 2012 entering students in Fall 2013: Colleges FT = 22,398 PT = 14,658
 Universities FT = 12,368 PT = 2,295

Source: System Office Research – Academic and Student Affairs



Second fall persistence & completion rates have been stable

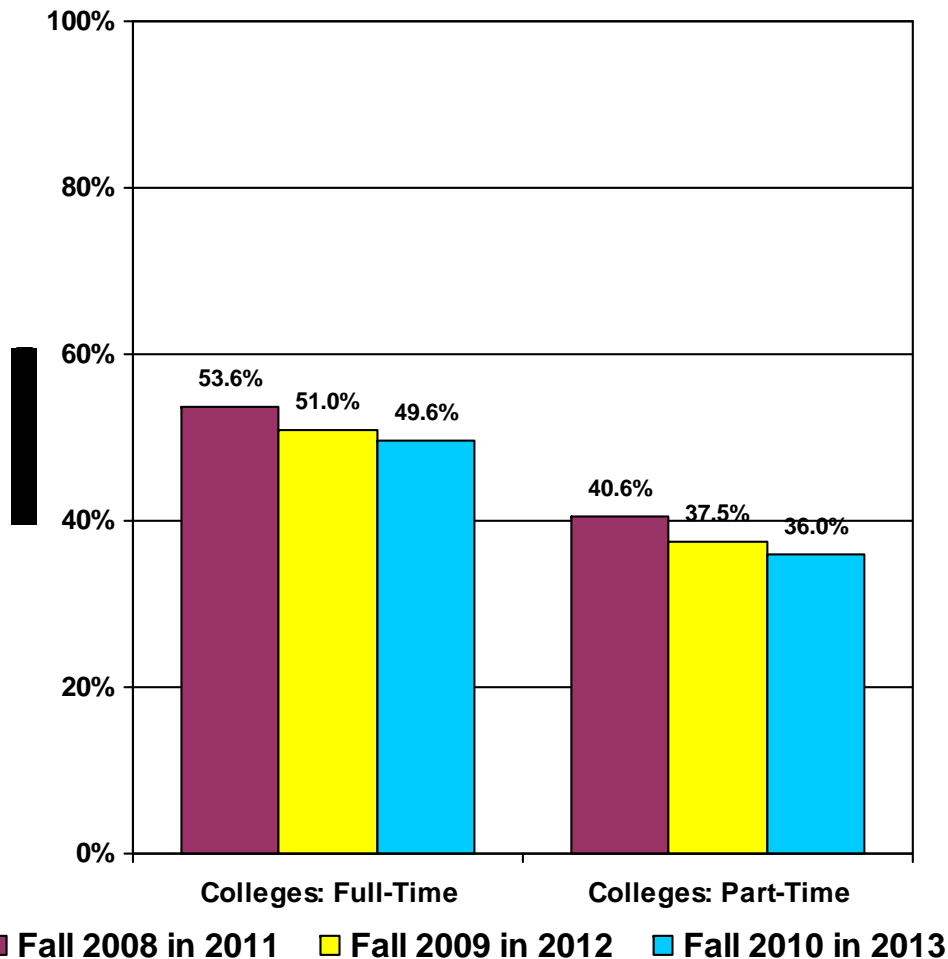


Fall 2012 entering students: Colleges FT = 22,398 PT = 14,658 Universities FT = 12,368 PT = 2,295



Source: System Office Research – Academic and Student Affairs

College third spring completion rates decreased during the recession



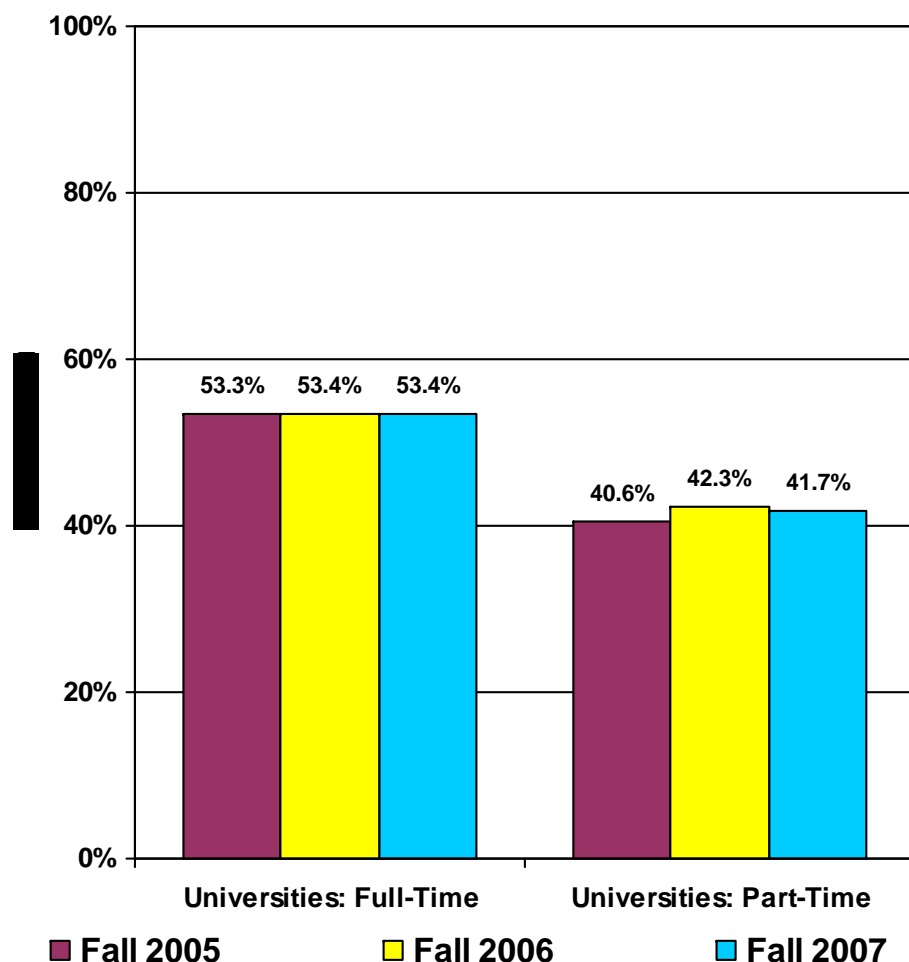
Third Spring Completion Rates Students Entering in Fall 2004 to 2009			
Minnesota State Colleges			
Completion Rates	Least Prepared	Moderately Prepared	Most Highly Prepared
Lowest Financial Need	47%	59%	60%
Moderate Financial Need	41%	56%	56%
Highest Financial Need	28%	40%	48%

Fall 2010 entering students: Colleges FT = 25,509 PT = 14,571

Source: System Office Research – Academic and Student Affairs



University sixth spring completion rates remained stable



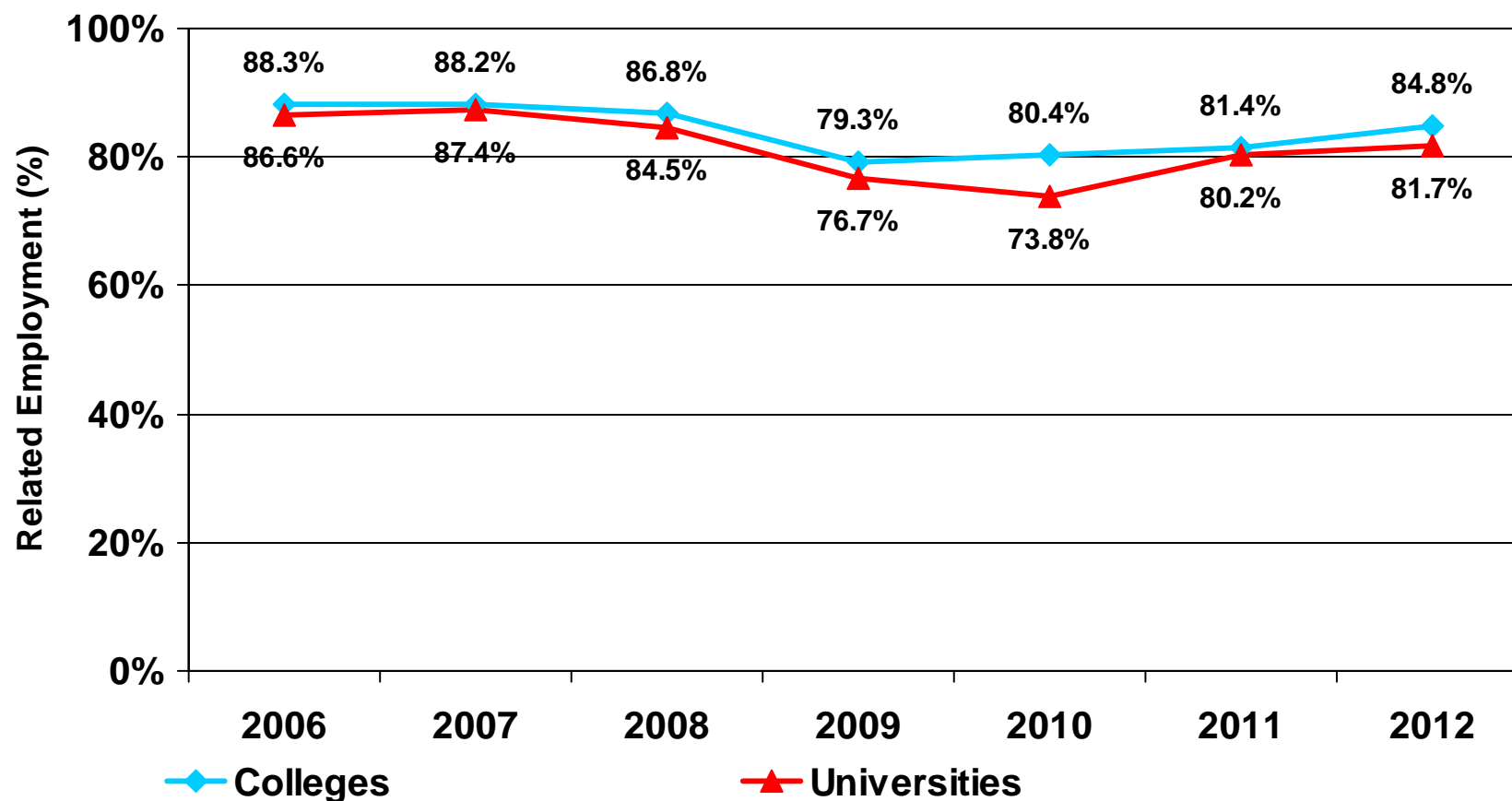
Sixth Spring Completion Rates Students Entering in Fall 2004 to 2009			
Minnesota State Universities			
Completion Rates	Least Prepared	Moderately Prepared	Most Highly Prepared
Lowest Financial Need	50%	53%	61%
Moderate Financial Need	44%	51%	59%
Highest Financial Need	34%	44%	48%

Fall 2010 entering students: Colleges FT = 25,509 PT = 14,571

Source: System Office Research – Academic and Student Affairs



Graduate related employment rate decreased during the recession but has been recovering

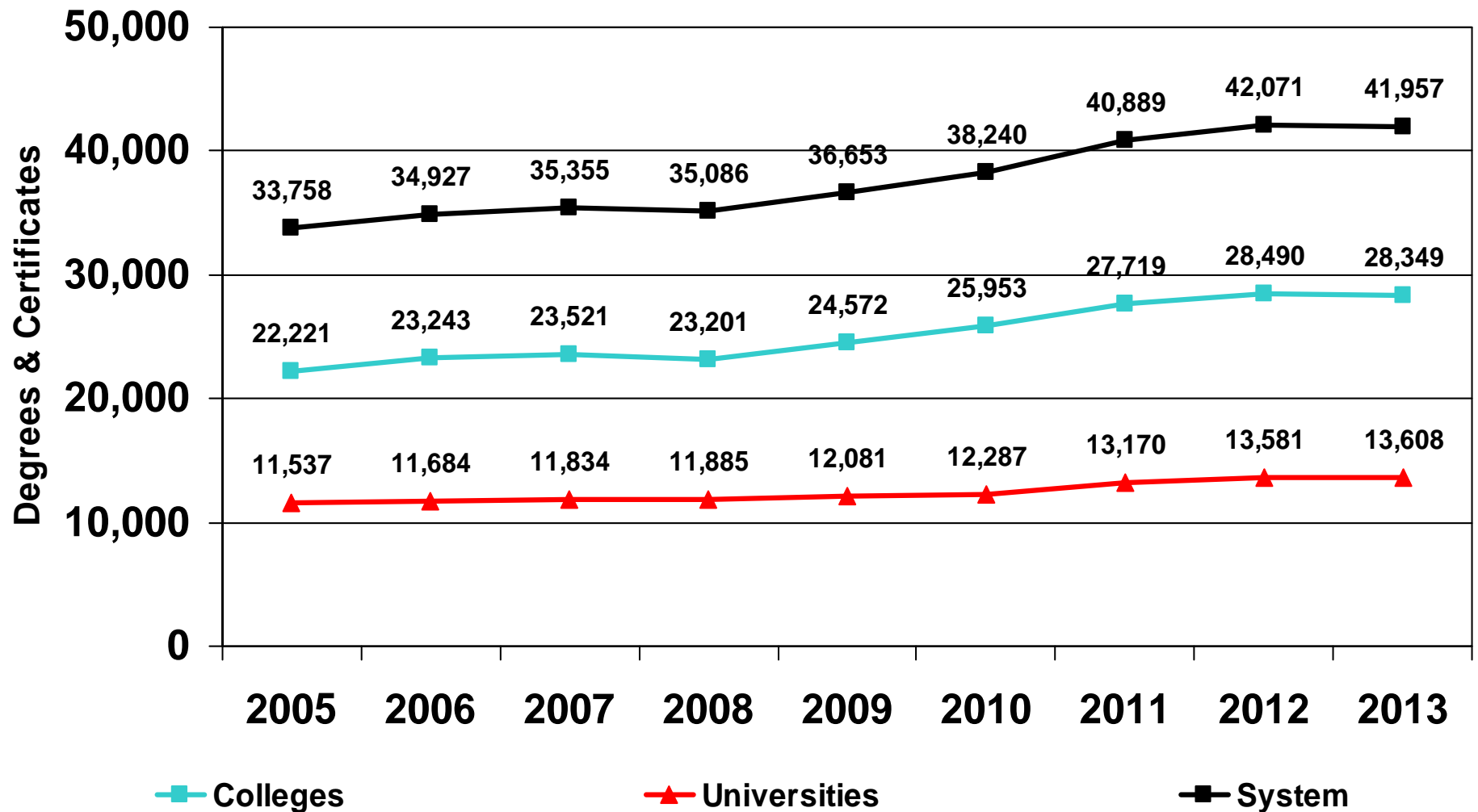


FY 2012 graduates available for related employment:
Colleges = 12,995 Universities = 9,418

Source: System Office Research – Academic and Student Affairs



Degrees and certificates conferred increased 24% between 2005 and 2013



Source: System Office Research – Academic and Student Affairs





Questions and discussion



Student success strategies

- Metropolitan State University
 - 6th spring completion rate
 - 54.9% for fall 2002 entrants in 2008
 - 69.3% for fall 2007 entrants in 2013
- Hennepin Technical College
 - Gap in 2nd fall persistence & completion
 - 74.6% students of color: fall 2012 in 2013
 - 76.1% white students: fall 2012 in 2013