

Anoka-Ramsey Community College, Cambridge, Surplus Real Property



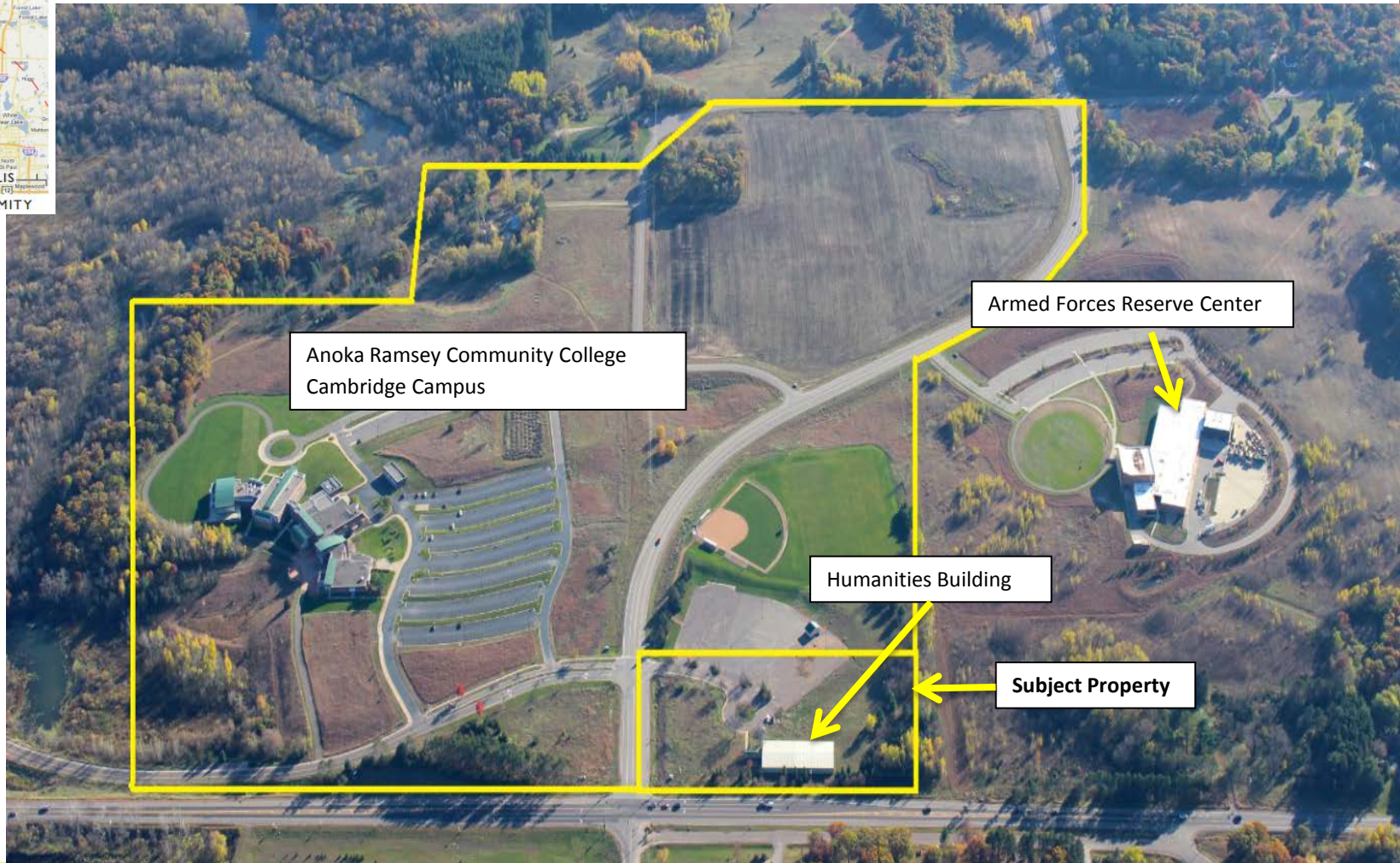
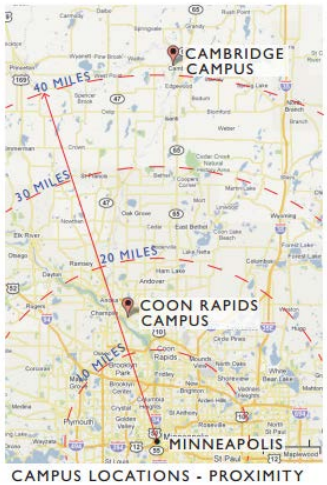
Finance and Facilities Committee

June 18, 2014

Surplus Action Process

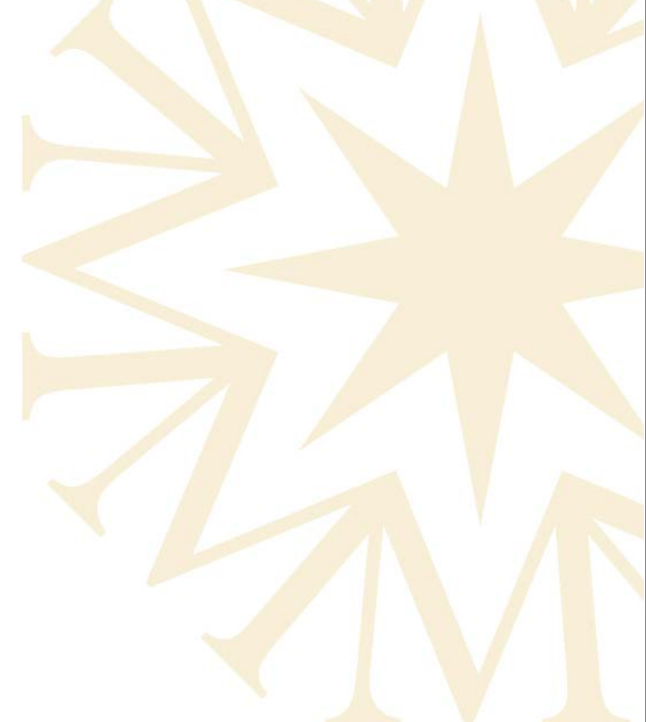
- **Minnesota Statute
Section 136F.60, Subd. 5**
- Board may declare real property surplus
- Offer for sale consistent with Minn. Stat. 16B.282 – 16B.286
- Net proceeds to be used by institution for capital projects

Location of Surplus Property



Request

To designate the subject property, an approximate 6.35 acre roughly rectangular shaped parcel located at the southwest corner of State Highway 95 and County Road 70 in Cambridge, as surplus, and delegate authority to the Chancellor or the Chancellor's designee to execute such documents as may be necessary to complete the sale for no less than the appraised value.



Property Information

Main Campus – Anoka Ramsey Community College, Cambridge

- 115 acres
- 114,042 sq. ft.

Subject Property

- 6.35 acres
- 11,200 sq. ft. metal building
- 22-25 years old
- Vacated about 4 years ago

Board Motion

- The Board of Trustees designates the subject property, an approximate 6.35 acre roughly rectangular shaped parcel located at the southwest corner of State Highway 95 and County Road 70 in Cambridge, as surplus, and delegates authority to the Chancellor or the Chancellor's designee to execute such documents as may be necessary to complete the sale for no less than the appraised value.