



Minnesota State Community and Technical College

Minnesota State Community and Technical College (M State) serves a variety of audiences to within the region, in the communities of Detroit Lakes, Fergus Falls, Moorhead and Wadena. From high school and traditional college students to adult learners seeking degrees and employees seeking workforce training, M State takes individuals to the next stages of their academic and career paths with affordable and flexible options. Within a five-school structure, M State creates student-centered classrooms to serve a diverse population.

Contributing to the Minnesota Economy

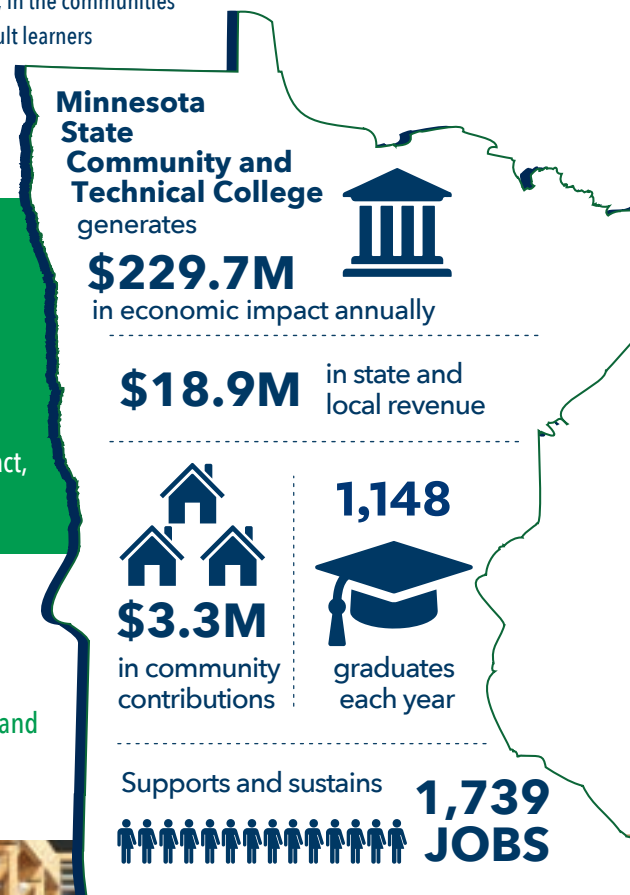
- Minnesota State Community and Technical College generates an annual economic impact of **\$229.7 million**. This includes a direct impact of \$134 million and an indirect/induced impact of \$95.8 million.
- Spending on operations and capital projects generates \$81.8 million of the total impact, and student and visitor spending generates \$147.9 million.

Supporting and Sustaining Jobs in the State

- Minnesota State Community and Technical College supports and sustains 1,739 Minnesota jobs (1,245 direct and 494 indirect/induced). These jobs are at the college and in the community - 309 direct jobs are employees of M State.

Generating Local and State Tax Revenue

- The combined tax impact of Minnesota State Community and Technical College, its suppliers, students and visitors is **\$18.9 million**. This includes a direct impact of \$13.1 million and indirect/induced impact of \$5.8 million.



Alumni in the State Generate Additional Impact

Minnesota State Community and Technical College alumni living and working in Minnesota are continuing to make a positive economic impact after graduation. These graduates are an integral part of the Minnesota workforce, impacting the economy not only through their spending but also through the extra earning power generated by their M State degree.

Each year, Minnesota State Community and Technical College graduates enter into the workforce and are prepared for the job. For over 20 years, M State has been supporting businesses and industries throughout the region with skills and technology training that are custom designed for the businesses needs. More than 500 companies have hired Workforce Development Solutions for hour-based training that focuses on specific training or production needs and for credit courses that help prepare workers for new responsibilities and advancement. These graduates are making an impact. The College's Workforce Development Solutions division provided over 100,000 hours of skills based training to over 8,000 participants in customized trainings in FY22.



Making a Difference in the Community and State

Minnesota State Community and Technical College hosts two presidential advisory council meetings each academic year on its campus. More than 75 representatives from community businesses and industries, agencies, and secondary and postsecondary schools are part of the councils. The meetings help college administrators stay connected with leaders, provide input on opportunities, and create an inclusive and vibrant community culture.



Minnesota State Technical and Community College Student Profile



6,616

students enrolled in fy2022



1,148

graduates each year



44.7%

pell recipients



16.6%

first-generation students
attending college



1:22

22 students per
full time faculty member



189

students currently enrolled
are veterans

An estimated **\$3,312,330** in charitable donations and volunteer services are generated annually by faculty, staff, and students.

- **\$412,946** donated to local charitable organizations by faculty, staff, and students.
- **\$2,899,384** of volunteer time by faculty, staff, and students.



MINNESOTA STATE



prepared by *Parker Phillips*
assess. analyze. assert!
January 2023

ACCESS THE FULL REPORT MINNSTATE.EDU/IMPACT